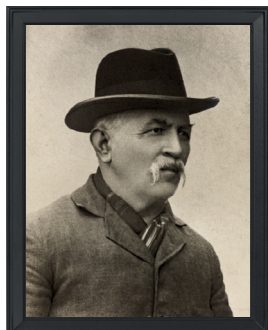


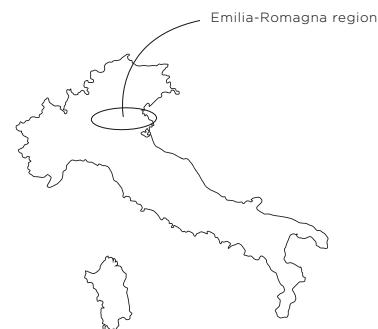


OVER 140 YEARS OF ITALIAN KNOW-HOW AND PASSION



Back in the 19th century, Francesco Bertazzoni and his son observed the trains arriving from Germany; he noticed they were heated by a new type of wood-burning stove that was used both to cook food for the train crew and to heat the carriages. This innovation appealed to his entrepreneurial instincts and his love of food, family and engineering.

Bertazzoni's home is in the Emilia-Romagna region of northern Italy, in the Po Valley. Known as the breadbasket of Italy. Renowned for its agricultural abundance means all the ingredients for the perfect meal can be found here.



Family. Food. Engineering. These three ideas came together in the mind of Francesco and they have passed down through the six Bertazzoni generations that have followed almost a century and a half later. Today those three words define the Bertazzoni brand.



“Always be true to yourself and to your own values.”

INDEX

FREESTANDING RANGES

Gas Ranges - Professional / Master / Heritage	4 - 5 - 6 - 7
Dual Fuel Ranges - Professional / Master / Heritage	8 - 9 - 10
Induction Ranges - Professional / Master	11 - 12 - 13
Electric ranges	14

BUILT-IN OVENS & SPECIALTY

Electric Ovens - Professional / Master	15 - 16
Speed Ovens - Professional / Master	16
Steam Ovens - Professional / Master	16
Microwave Ovens / OTR / Drawer - Professional / Master	17
Warming Drawers - Professional / Master	17

RANGETOPS & COOKTOPS

Gas Rangetops	18
Induction Rangetops	18
Gas Cooktops	18 - 19
Induction Cooktops	20
Electric Cooktops	20

REFRIGERATION

Freestanding Refrigerators	22 - 23
Built-in French Door Refrigerators	24
Built-in Bottom Mount Refrigerators & Accessories	25 - 26
Built-in Refrigerator, Freezer Columns & Wine Cellars (V TRIM)	27
Accessories (V TRIM)	28
Built-in Refrigerator & Freezer Columns (T TRIM)	29
Built-in Wine Cellars & Accessories (T TRIM)	30

CLEAN UP

Built-in Dishwashers	31
----------------------	----

VENTILATION

Undermount / Wallmount hoods	32
Contemporary / Chimney Wallmount Hoods	33
T-Shape Wallmount	33 - 34
Heritage	34
Insert	35
Visor	35

COFFEE MACHINE

Built-in Coffee Machine	35
-------------------------	----

ACCESSORIES

Duct Covers and Recirculation Kits	36
Baffle, Mesh and Charcoal Filters	37
Toekick Panels, Knobs, Backguards, Decor Sets	38
Telescopic Shelves, Trays, Simmer/Wok/Griddle Plates	39
Ventilation Accessory Guide Matrix	40
Bertazzoni Color Options	41

TWO YEAR LIMITED WARRANTY

Bertazzoni SpA will repair or replace any component part which fails or proves defective due to materials and/or workmanship within 2 years from the date of installation and under conditions of normal residential use. Repair or replacement will be free of charge, including labor at standard rates and shipping expenses. Repair service must be performed by a Bertazzoni Authorized Service Center during normal working hours. Cosmetic damages must be reported no later than 30 days after installation. This warranty does not cover the use of the product in any commercial application.

Specifications and features may vary. Please refer to the manufacturer's website for the latest updates.

ALL SERIES

GAS RANGES



MAS486GGASNEV



PRO486BTFGMXT



HER486BTFGMAVT

48" GAS RANGES

MAS486GGASXV	●	48" Master Series Gas Range	Stainless	V tier
MAS486GGASXVLP	●	48" Master Series LP Range	Stainless	V tier
MAS486GGASNEV	●	48" Master Series Gas Range	Nero Matt	V tier
MAS486GGASBIV	○	48" Master Series Gas Range	Bianco Matt	V tier
MAS486BTFGMXT	●	48" Master Series Gas Range	Stainless	T tier
MAS486BTFGMXTLP	●	48" Master Series LP Range	Stainless	T tier
PRO486BTFGMXT	●	48" Professional Series Gas Range	Stainless	T tier
PRO486BTFGMXTLP	●	48" Professional Series LP Range	Stainless	T tier
PRO486BTFGMNET	●	48" Professional Series Gas Range	Nero Glossy	T tier
PRO486BTFGMBIT	○	48" Professional Series Gas Range	Bianco Glossy	T tier
PRO486BTFGMGIT	●	48" Professional Series Gas Range	Giallo Glossy	T tier
PRO486BTFGMART	●	48" Professional Series Gas Range	Arancio Glossy	T tier
PRO486BTFGMROT	●	48" Professional Series Gas Range	Rosso Glossy	T tier
HER486BTFGMXT	●	48" Heritage Series Gas Range	Stainless	T tier
HER486BTFGMAVT	●	48" Heritage Series Gas Range	Avorio	T tier
HER486BTFGMNET	●	48" Heritage Series Gas Range	Nero Matt	T tier

- 2 x 19000 BTUs power burners with dual ring of flame boil water in 6 minutes flat
- Stainless steel electric griddle and integrated cover
- Main oven features dual horizontal convection that allows even baking and roasting on 7 shelf levels
- Extra-large high-power broiler for broiling and grilling
- 4.7 cu.ft main gas oven with 5 cooking modes and 2.4 cu.ft auxiliary gas oven with 1 cooking mode

V tier:

- 6 mono-bloc aluminum burners + electric griddle
- Soft motion door hinges
- Elegant temperature gauge for control of oven temperature during pre-heating and baking
- Included: 1 baking tray with grill trivet and simmer ring

- 2 heavy duty racks per oven
- Counter-deep maintop for flush installation with kitchen countertops and cabinets
- Electric ignition with thermocouple safety device
- 1" stainless steel island trim
- A gas conversion kit is included with every range
- Dimensions: W 35 7/8" / H 35 3/4" - 37 1/2" (adjustable legs) D 25 1/4" (handle not included)

T tier:

- 6 mono-bloc brass burners + electric griddle
- Soft closing door hinges
- 2 telescopic guides per oven
- Digital gauge with integrated controls for food temperature probe
- Included: 1 baking tray with grill trivet, simmer ring, wok ring and full width stainless steel toe kick

See page 38 for the Heritage Collezione Metalli & Master Décor sets.

Specifications and features may vary. Please refer to the manufacturer's website for the latest updates.

ALL SERIES

GAS RANGES



MAS365GASBIV



PRO366BCFGMNET



HER366BCFGMXT

36" GAS RANGES

MAS365GASXV	●	36" Master Series Gas Range	Stainless	V tier
MAS365GASXVLP	●	36" Master Series LP Range	Stainless	V tier
MAS365GASNEV	●	36" Master Series Gas Range	Nero Matt	V tier
MAS365GASBIV	○	36" Master Series Gas Range	Bianco Matt	V tier
MAS366BCFGMXT	●	36" Master Series Gas Range	Stainless	T tier
MAS366BCFGMXTLP	●	36" Master Series LP Range	Stainless	T tier
PRO366BCFGMXT	●	36" Professional Series Gas Range	Stainless	T tier
PRO366BCFGMXTLP	●	36" Professional Series LP Range	Stainless	T tier
PRO366BCFGMNET	●	36" Professional Series Gas Range	Nero Glossy	T tier
PRO366BCFGMBIT	○	36" Professional Series Gas Range	Bianco Glossy	T tier
PRO366BCFGMGIT	●	36" Professional Series Gas Range	Giallo Glossy	T tier
PRO366BCFGMART	●	36" Professional Series Gas Range	Arancio Glossy	T tier
PRO366BCFGMROT	●	36" Professional Series Gas Range	Rosso Glossy	T tier
HER366BCFGMXT	●	36" Heritage Series Gas Range	Stainless	T tier
HER366BCFGMAVT	○	36" Heritage Series Gas Range	Avorio	T tier
HER366BCFGMNET	●	36" Heritage Series Gas Range	Nero Matt	T tier

- Counter-deep maintop for flush installation with kitchen countertops and cabinets
- Main oven features dual horizontal convection that allows even baking and roasting on 7 shelf levels
- Extra-large high-power broiler for broiling and grilling in main oven
- 5.7 cu.ft gas oven featuring 5 cooking modes
- 2 heavy duty oven racks
- Electric ignition with thermocouple safety device
- 1" stainless steel island trim
- A gas conversion kit is included with every range
- Dimensions: W 35 7/8" / H 35 3/4" - 37 1/2" (adjustable legs) D 25 1/4" (handle not included)

V tier:

- 5 aluminum mono-bloc burners
- 1 x 19000 BTU power burner with dual ring of flame boil water in 6 minutes flat
- Elegant temperature gauge for control of oven temperature during pre-heating and baking
- Soft motion door hinges
- Included: 1 baking tray with grill trivet and simmer ring

T tier:

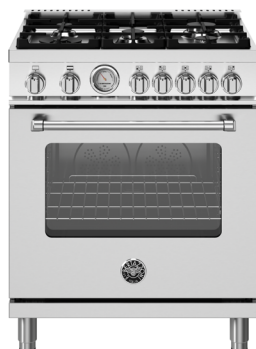
- 6 brass mono-bloc burners
- 2 x 19000 BTUs power burners with dual ring of flame boil water in 6 minutes flat
- 2 telescopic guides
- Soft closing door hinges
- Digital gauge with integrated controls for food temperature probe
- Included: Cast iron griddle, 1 baking tray with grill trivet, simmer ring, wok ring and full width stainless steel toe kick

See page 38 for the Heritage Collezione Metalli & Master Décor sets.

Specifications and features may vary. Please refer to the manufacturer's website for the latest updates.

ALL SERIES

GAS RANGES



MAS305GASXV



PRO304BFGMROT

30" GAS RANGES

MAS305GASXV	●	30" Master Series Gas Range	Stainless	V tier
MAS305GASXVLP	●	30" Master Series LP Range	Stainless	V tier
MAS305GASNEV	●	30" Master Series Gas Range	Nero Matt	V tier
MAS305GASBIV	○	30" Master Series Gas Range	Bianco Matt	V tier
PRO305GASXV	●	30" Professional Series Gas Range	Stainless	V tier
PRO304BFGMXT	●	30" Professional Series Gas Range	Stainless	T tier
PRO304BFGMXTLP	●	30" Professional Series LP Range	Stainless	T tier
PRO304BFGMNET	●	30" Professional Series Gas Range	Nero Glossy	T tier
PRO304BFGMBIT	○	30" Professional Series Gas Range	Bianco Glossy	T tier
PRO304BFGMGIT	●	30" Professional Series Gas Range	Giallo Glossy	T tier
PRO304BFGMART	●	30" Professional Series Gas Range	Arancio Glossy	T tier
PRO304BFGMROT	●	30" Professional Series Gas Range	Rosso Glossy	T tier

- Counter-deep maintop for flush installation with kitchen countertops and cabinets
- 1 x 19000 BTUs power burners with dual ring of flame boil water in 6 minutes flat
- Dual horizontal convection that allows even baking and roasting on 7 shelf levels
- Extra-large high-power broiler for broiling and grilling in main oven
- 4.7 cu.ft gas oven featuring 5 cooking modes
- 2 heavy duty oven racks
- Electric ignition with thermocouple safety device
- 1" stainless steel island trim
- A gas conversion kit is included with every range
- Dimensions: W 29 7/8" / H 35 3/4" - 37 1/2" (adjustable legs) D 25 1/4" (handle not included)

V tier:

- 5 aluminum mono-bloc burners
- Soft motion door hinges
- Elegant temperature gauge for control of oven temperature during pre-heating and baking
- Included: 1 baking tray with grill trivet and simmer ring

T tier:

- 4 brass mono-bloc burners
- Soft closing door hinges
- Digital gauge with integrated controls for food temperature probe
- 2 telescopic guides
- Included: 1 baking tray with grill trivet, cast iron griddle, simmer ring, wok ring and full width stainless steel toe kick

See page 38 for the Heritage Collezione Metalli & Master Décor sets.

Specifications and features may vary. Please refer to the manufacturer's website for the latest updates.

ALL SERIES

GAS RANGES



MAS244GASNEV



PRO244GASXV

24" GAS RANGES

MAS244GASXV	●	24" Master Series Gas Range	Stainless	V tier
MAS244GASXVLP	●	24" Master Series LP Range	Stainless	V tier
MAS244GASNEV	●	24" Master Series Gas Range	Nero Matt	V tier
MAS244GASBIV	○	24" Master Series Gas Range	Bianco Matt	V tier
PRO244GASXV	●	24" Professional Series Gas Range	Stainless	V tier
PRO244GASXVLP	●	24" Professional Series LP Range	Stainless	V tier

- 4 aluminum mono-bloc burners
- Soft motion door hinges
- Counter-deep maintop for flush installation with kitchen countertops and cabinets
- 1 x 19000 BTUs power burners with dual ring of flame boil water in 6 minutes flat
- Dual horizontal convection that allows even baking and roasting on 7 shelf levels
- Extra-large high-power broiler for broiling and grilling in main oven
- 2.4 cu.ft gas oven featuring 5 cooking modes
- 2 heavy duty oven racks
- Electric ignition with thermocouple safety device
- 1" stainless steel island trim
- A gas conversion kit is included with every range
- Included: 1 baking tray with grill trivet and simmer ring
- Dimensions: W 23 7/8" / H 35 3/4" - 37 1/2" (adjustable legs) D 25 1/4" (handle not included)

See page 38 for the Master Décor sets.

ALL SERIES

DUAL FUEL RANGES



MAS486GDFMXV



PRO486BTFEPROT



HER486BTFEFNET

48" DUAL FUEL RANGES

MAS486GDFMXV	●	48" Master Series Dual Fuel Range	Stainless	V tier
MAS486GDFMNEV	●	48" Master Series Dual Fuel Range	Nero Matt	V tier
MAS486GDFMBIV	○	48" Master Series Dual Fuel Range	Bianco Matt	V tier
MAS486BTFEPTX	●	48" Master Series Dual Fuel Range	Stainless	T tier
PRO486BTFEPTX	●	48" Professional Series Dual Fuel Range	Stainless	T tier
PRO486BTFEFNET	●	48" Professional Series Dual Fuel Range	Nero Glossy	T tier
PRO486BTFEFBIT	○	48" Professional Series Dual Fuel Range	Bianco Glossy	T tier
PRO486BTFEFGIT	●	48" Professional Series Dual Fuel Range	Giallo Glossy	T tier
PRO486BTFEFPART	●	48" Professional Series Dual Fuel Range	Arancio Glossy	T tier
PRO486BTFEPROT	●	48" Professional Series Dual Fuel Range	Rosso Glossy	T tier
HER486BTFEPTX	●	48" Heritage Series Dual Fuel Range	Stainless	T tier
HER486BTFEPAVT	○	48" Heritage Series Dual Fuel Range	Avorio	T tier
HER486BTFEFNET	●	48" Heritage Series Dual Fuel Range	Nero Matt	T tier

- 2 x 19000 BTUs power burners with dual ring of flame boil water in 6 minutes flat
- Stainless steel electric griddle and integrated cover
- Main oven features dual horizontal convection with heating element that allows even baking and roasting on 7 shelf levels
- Extra-large high-power broiler for broiling and grilling in main oven
- 2 heavy duty racks per oven
- Electric ignition with thermocouple safety device
- Counter-deep maintop for flush installation with kitchen countertops and cabinets
- Electric ignition with thermocouple safety device
- 1" stainless steel island trim
- A gas conversion kit is included with every range
- Dimensions: W 47 7/8" / H 35 3/4" - 37 1/2" (adjustable legs) D 25 1/4" (handle not included)

V tier:

- 6 mono bloc aluminum burners + electric griddle
- 4.7 cu.ft main electric oven with 9 cooking modes
- 2.4 cu.ft auxiliary electric self-clean oven with 5 cooking modes
- Soft motion door hinges
- Elegant temperature gauge for control of oven temperature during pre-heating and baking
- Included: 1 baking tray with grill trivet and simmer ring

T tier:

- 6 mono bloc brass burners + electric griddle
- 4.6 cu.ft main electric self-clean oven with 10 cooking modes
- 2.4 cu.ft auxiliary with 5 cooking modes
- Soft closing door hinges
- Digital gauge with integrated controls for food temperature probe
- Dedicated air-frying mode for healthier cooking
- Included: 1 baking tray with grill trivet, 1 air fry basket, simmer ring, wok ring and full width stainless steel toe kick

See page 38 for the Heritage Collezione Metalli & Master Décor sets.

Specifications and features may vary. Please refer to the manufacturer's website for the latest updates.

ALL SERIES

DUAL FUEL RANGES



MAS365DFMXV



MAS365DFMBIV



PRO366BCFEPART



HER366BCFEPAVT

36" DUAL FUEL RANGES

MAS365DFMXV	●	36" Master Series Dual Fuel Range	Stainless	V tier
MAS365DFMNEV	●	36" Master Series Dual Fuel Range	Nero Matt	V tier
MAS365DFMBIV	○	36" Master Series Dual Fuel Range	Bianco Matt	V tier
PRO366BCFEPXT	●	36" Professional Series Dual Fuel Range	Stainless	T tier
PRO366BCFEPNET	●	36" Professional Series Dual Fuel Range	Nero Glossy	T tier
PRO366BCFEPBIT	○	36" Professional Series Dual Fuel Range	Bianco Glossy	T tier
PRO366BCFEPGIT	●	36" Professional Series Dual Fuel Range	Giallo Glossy	T tier
PRO366BCFEPART	●	36" Professional Series Dual Fuel Range	Arancio Glossy	T tier
PRO366BCFEPROT	●	36" Professional Series Dual Fuel Range	Rosso Glossy	T tier
HER366BCFEPXT	●	36" Heritage Series Dual Fuel Range	Stainless	T tier
HER366BCFEPAVT	●	36" Heritage Series Dual Fuel Range	Avorio	T tier
HER366BCFEPNET	●	36" Heritage Series Dual Fuel Range	Nero Matt	T tier

- Counter-deep maintop for flush installation with kitchen countertops and cabinets
- Dual horizontal convection with heating element that allows even baking and roasting on 7 shelf levels
- 2 heavy duty oven racks
- Extra-large high-power broiler for broiling and grilling

- Electric ignition with thermocouple safety device
- 1" stainless steel island trim
- A gas conversion kit is included with every range
- Dimensions: W 35 7/8" / H 35 3/4" - 37 1/2" (adjustable legs)
D 25 1/4" (handle not included)

V tier:

- 5 mono bloc aluminum burners
- 1 x 19000 BTUs power burners with dual ring of flame boil water in 6 minutes flat
- Soft motion door hinges
- 5.9 cu.ft electric oven with 9 cooking modes
- Elegant temperature gauge for control of oven temperature during pre-heating and baking
- Included: 1 baking tray with grill trivet and simmer ring

T tier:

- 6 mono bloc brass burners
- 2 x 19000 BTUs power burners with dual ring of flame boil water in 6 minutes flat
- Soft closing door hinges
- 5.7 cu.ft electric self-clean oven with 10 cooking modes
- Digital gauge with integrated controls for food temperature probe
- 2 telescopic guides
- Dedicated air-frying mode for healthier cooking
- Included: Cast iron griddle, 1 baking tray with grill trivet, 1 air fry basket, simmer ring, wok ring and full width stainless steel toe kick

See page 38 for the Heritage Collezione Metalli & Master Décor sets.

Specifications and features may vary. Please refer to the manufacturer's website for the latest updates.

ALL SERIES

DUAL FUEL RANGES



MAS305DFMNEV



PRO305DFMXV



PRO304BFEPGIT

30" DUAL FUEL RANGES

MAS305DFMXV	●	30" Master Series Dual Fuel Range	Stainless	V tier
MAS305DFMNEV	●	30" Master Series Dual Fuel Range	Nero Matt	V tier
MAS305DFMBIV	○	30" Master Series Dual Fuel Range	Bianco Matt	V tier
PRO305DFMXV	●	30" Professional Series Dual Fuel Range	Stainless	V tier
PRO304BFEPXT	●	30" Professional Series Dual Fuel Range	Stainless	T tier
PRO304BFEPNET	●	30" Professional Series Dual Fuel Range	Nero Glossy	T tier
PRO304BFEPBIT	○	30" Professional Series Dual Fuel Range	Bianco Glossy	T tier
PRO304BFEPGIT	●	30" Professional Series Dual Fuel Range	Giallo Glossy	T tier
PRO304BFEPART	●	30" Professional Series Dual Fuel Range	Arancio Glossy	T tier
PRO304BFEPROT	●	30" Professional Series Dual Fuel Range	Rosso Glossy	T tier

- 1 x 19000 BTUs power burners with dual ring of flame boil water in 6 minutes flat
- Counter-deep maintop for flush installation with kitchen countertops and cabinets
- Dual horizontal convection with heating element that allows even baking and roasting on 7 shelf levels
- Extra-large high-power broiler for broiling and grilling

- Electric ignition with thermocouple safety device
- 1" stainless steel island trim
- A gas conversion kit is included with every range
- Dimensions: W 29 7/8" / H 35 3/4" - 37 1/2" (adjustable legs)
D 25 1/4" (handle not included)

V tier:

- 5 mono bloc aluminum burners
- Soft motion door hinges
- 4.7 cu.ft electric oven with 9 cooking modes
- Elegant temperature gauge for control of oven temperature during pre-heating and baking
- Included: 1 baking tray with grill trivet and simmer ring

T tier:

- 4 mono bloc brass burners
- Soft closing door hinges
- 4.6 cu.ft electric self-clean oven with 10 cooking modes
- Digital gauge with integrated controls for food temperature probe
- 2 telescopic guides
- Dedicated air-frying mode for healthier cooking
- Included: Cast iron griddle, 1 baking tray with grill trivet, 1 air fry basket, simmer ring, wok ring and full width stainless steel toe kick

See page 38 for the Heritage Collezione Metalli & Master Décor sets.

Specifications and features may vary. Please refer to the manufacturer's website for the latest updates.

ALL SERIES

INDUCTION RANGES



MAS486IGFEPXT



PRO486IGFEPXT



HER486IGFEPXT

48" INDUCTION RANGES

MAS486IGFEPXT	●	48" Master Series Induction Range	Stainless	T tier
PRO486IGFEPXT	●	48" Professional Series Induction Range	Stainless	T tier
PRO486IGFEPXT	●	48" Professional Series Induction Range	Carbonio	T tier
HER486IGFEPXT	●	48" Heritage Series Induction Range	Stainless	T tier



HER486IGFEPXT

- 6 extra-large induction zones with bridging of right-side zones
- Large removable cast-iron griddle
- Front right, 2100W, Front left 2300W, Front center 2300W, Back right 2100W, Back left 2300W, Back center 2600W
- All zones 3700W booster
- 4.6 cu.ft electric self-clean oven with 10 cooking modes

- Dual horizontal convection with heating element that allows even baking and roasting on 7 shelf levels
- 2.4 cu.ft auxiliary with 5 cooking modes
- 2 telescopic guides per oven
- Soft closing door hinges
- Digital gauge with integrated controls for food temperature probe
- Dedicated air-frying mode for healthier cooking
- Extra-large high-power broiler for broiling and grilling in main oven
- Electric ignition with thermocouple safety device
- Counter-deep maintop for flush installation with kitchen countertops and cabinets
- 1" stainless steel island trim
- Included: Cast iron griddle, 1 baking tray with grill trivet, 1 air fry basket and full width stainless steel toe kick
- Electrical supply: 120/240V 60 Hz -18,500W / 50A with dedicated circuit
- Dimensions: W 47 7/8" / H 35 3/4" - 37 1/2" (adjustable legs) D 25 1/4" (handle not included)

See page 38 for the Heritage Collezione Metalli Décor sets.

ALL SERIES

INDUCTION RANGES



MAS365INMBIV



MAS365ICFEPXT



PRO365ICFEPCAT



HER365ICFEPAVT

36" INDUCTION RANGES

MAS365INMXV	●	36" Master Series Induction Range	Stainless	V tier
MAS365INMBNEV	●	36" Master Series Induction Range	Nero Matt	V tier
MAS365INMBIV	○	36" Master Series Induction Range	Bianco Matt	V tier
MAS365ICFEPXT	●	36" Master Series Induction Range	Stainless	T tier
PRO365INMXV	●	36" Professional Series Induction Range	Stainless	V tier
PRO365ICFEPXT	●	36" Professional Series Induction Range	Stainless	T tier
PRO365ICFEPNET	●	36" Professional Series Induction Range	Nero Glossy	T tier
PRO365ICFEPBIT	○	36" Professional Series Induction Range	Bianco Glossy	T tier
PRO365ICFEPGIT	●	36" Professional Series Induction Range	Giallo Glossy	T tier
PRO365ICFEPART	●	36" Professional Series Induction Range	Arancio Glossy	T tier
PRO365ICFEPROT	●	36" Professional Series Induction Range	Rosso Glossy	T tier
PRO365ICFEPCAT	●	36" Professional Series Induction Range	Carbonio	T tier
HER365ICFEPXT	●	36" Heritage Series Induction Range	Stainless	T tier
HER365ICFEPAVT	●	36" Heritage Series Induction Range	Avorio	T tier
HER365ICFEPNET	●	36" Heritage Series Induction Range	Nero Matt	T tier

- 5 latest generation extra-large induction zones with bridging of right-side zones
- Front right, 2100W (3700W booster), Front left 1400W (2200W booster), Center 2300W (3700W booster), Back right 2100W (3700W booster), Back left 2300W (3700W booster)
- Dual horizontal convection with heating element that allows even baking and roasting on 7 shelf levels

- Extra-large high-power broiler for broiling and grilling in main oven
- Counter-deep maintop for flush installation with kitchen countertops and cabinets
- 1" stainless steel island trim
- Dimensions: W 35 7/8" / H 35 3/4" - 37 1/2" (adjustable legs) D 25 1/4" (handle not included)

V tier:

- Soft motion door hinges
- 5.9 cu.ft electric oven with 9 cooking modes
- Elegant temperature gauge for control of oven temperature during pre-heating and baking
- Included: 1 baking tray with grill trivet
- Electrical supply: 120/240V 60 Hz -14,800W / 40A with dedicated circuit

T tier:

- Large removable cast-iron griddle
- Soft closing door hinges
- 5.7 cu.ft electric self-clean oven with 10 cooking modes
- 2 telescopic guides
- Digital gauge with integrated controls for food temperature probe
- Dedicated air-frying mode for healthier cooking
- Included: Cast iron griddle, 1 baking tray with grill trivet, 1 air fry basket and full width stainless steel toe kick
- Electrical supply: 120/240V 60 Hz -17,000W / 50A with dedicated circuit

See page 38 for the Heritage Collezione Metalli & Master Décor sets.

Specifications and features may vary. Please refer to the manufacturer's website for the latest updates.

ALL SERIES

INDUCTION RANGES



MAS304INMNEV



PRO304INMXV



PRO304IFEPART

30" INDUCTION RANGES

MAS304INMXV	●	30" Master Series Induction Range	Stainless	V tier
MAS304INMNEV	●	30" Master Series Induction Range	Nero Matt	V tier
MAS304INMBIV	○	30" Master Series Induction Range	Bianco Matt	V tier
PRO304INMXV	●	30" Professional Series Induction Range	Stainless	V tier
PRO304IFEPXT	●	30" Professional Series Induction Range	Stainless	T tier
PRO304IFEPNET	●	30" Professional Series Induction Range	Nero Glossy	T tier
PRO304IFEPBIT	○	30" Professional Series Induction Range	Bianco Glossy	T tier
PRO304IFEPGIT	●	30" Professional Series Induction Range	Giallo Glossy	T tier
PRO304IFEPART	●	30" Professional Series Induction Range	Arancio Glossy	T tier
PRO304IFEPROT	●	30" Professional Series Induction Range	Rosso Glossy	T tier
PRO304IFEPCAT	●	30" Professional Series Induction Range	Carbonio	T tier

- 5 latest generation extra-large induction zones with bridging of right-side zones
- Front right, 2100W (3700W booster), Front left 1400W (2200W booster), Center 2300W (3700W booster), Back right 2100W (3700W booster), Back left 2300W (3700W booster)
- Dual horizontal convection with heating element that allows even baking and roasting on 7 shelf levels

- Extra-large high-power broiler for broiling and grilling in main oven
- 2 heavy duty oven racks
- Counter-deep maintop for flush installation with kitchen countertops and cabinets
- 1" stainless steel island trim
- Dimensions: W 29 7/8" / H 35 3/4" - 37 1/2" (adjustable legs)
D 25 1/4" (handle not included)

V tier:

- Soft motion door hinges
- 4.7 cu.ft electric oven with 9 cooking modes
- Elegant temperature gauge for control of oven temperature during pre-heating and baking
- Included: 1 baking tray with grill trivet
- Electrical supply: 120/240V 60 Hz -11,000W / 40A with dedicated circuit

T tier:

- Soft closing door hinges
- 4.6 cu.ft electric self-clean oven with 10 cooking modes
- 2 telescopic guides
- Digital gauge with integrated controls for food temperature probe
- Dedicated air-frying mode for healthier cooking
- Included: 1 baking tray with grill trivet, 1 air fry basket and full width stainless steel toe kick
- Electrical supply: 120/240V 60 Hz -13,000W / 40A with dedicated circuit

See page 38 for the Master Décor sets.

Specifications and features may vary. Please refer to the manufacturer's website for the latest updates.

ALL SERIES

INDUCTION & ELECTRIC RANGES



MAS244IFEMXB



MAS304CEMXV



PRO304CEMXV

24" INDUCTION RANGE

MAS244IFEMXB	●	24" Master Series Induction Range	Stainless	V tier
PRO244IFEMXB	●	24" Professional Series Induction Range	Stainless	V tier

- 4 induction zones
- 2.4 Cu.Ft oven cavity with convection fan
- 11 cooking modes
- Front right 2100W (3700W booster)
- Front left 1400W (2200W booster)
- Back left 1850W (3000W booster)
- Back right 2100W (3700W booster)

- 2 wire racks
- Fixed stainless steel storage compartment
- Counter-deep maintop for flush installation
- Dimensions:
W 23 7/8" / H 35 3/4" - 37 1/2" (adjustable legs) D 25 1/4"

30" ELECTRIC RANGES

MAS304CEMXV	●	30" Master Series Electric Range	Stainless	V tier
PRO304CEMXV	●	30" Professional Electric Range	Stainless	V tier

- 4 ceran zones
- 4.7 cu.ft electric oven with 9 cooking modes
- Main oven features dual horizontal convection with heating element that allows even baking and roasting on 7 shelf levels
- Extra-large high-power broiler for broiling and grilling in main oven
- Elegant temperature gauge for control of oven temperature during pre-heating and baking
- 2 heavy duty oven racks
- Counter-deep maintop for flush installation with kitchen countertops and cabinets
- 1" stainless steel island trim
- 1 baking tray with grill trivet
- Dimensions: W 29 7/8" / H 35 3/4" - 37 1/2" (adjustable legs) D 25 1/4" (handle not included)

See page 38 for the Master Décor sets.

Specifications and features may vary. Please refer to the manufacturer's website for the latest updates.

PROFESSIONAL &
MASTER SERIES

BUILT-IN OVENS

30" ELECTRIC CONVECTION SINGLE OVEN

PROF30FSEXT	30" Professional Series - Single Self-Clean Oven - Top Version (T)
MAST30FSEXT	30" Master Series - Single Self-Clean Oven - Top Version (T)
PROF30FSEXV	30" Professional Series - Single Oven - Value Version (V)
MAST30FSEXV	30" Master Series - Single Oven - Value Version (V)

30" ELECTRIC CONVECTION DOUBLE OVEN

PROF30FDEXT	30" Professional Series - Double Self-Clean Oven - Top Version (T)
MAST30FDEXT	30" Master Series - Double Self-Clean Oven - Top Version (T)
PROF30FDEXV	30" Professional Series - Double Oven - Value Version (V)
MAST30FDEXV	30" Master Series - Oven - Value Version (V)

- TFT Display + knobs with 10 cooking modes
+ Assistant (XT models)
LED touch control interface + knobs with 9 cooking modes (XV models)
- Flush front design and suitable for undercounter installation
- Fingerprint free stainless steel
- Dual diagonal convection system
- Net volume for each cavity : 4.1 cu.ft
- Dimensions: W 29 7/8" / D 22 5/8" / H 28 5/8" (single)
H 53 1/4" (double)
- Bake: 5400W Broiler: 3400 W Convection: 3300W
- Touch digital programmer timer
- Electrical supply: 30 Amp - 5 000 W (single)
Electrical supply: 50 Amp - 11 000 W (double)
- Soft-Close on XT models
- Soft-Motion on XV models
- 1 wire shelf flat + 1 wire shelf shaped
+ 1 baking tray with roasting trivet (XV Model)
- 1 wire shelf flat + 1 wire shelf shaped +1 set of telescopic glides
+ 1 baking tray with roasting trivet+ 1 food probe (XT Model)

COOKING MODES: 1 bake 2 broil 3 convection 4 convection bake 5 convection broiler 6 pizza

COOKING MODES: 1 defrost 2 dehydrate 3 fast preheat 4 keep warm 5 light 6 proof 7 sabbath mode 8 self clean
9 timer 10 assistant (XT model)



PROF30FSEXV



MAST30FSEXT



PROF30FDEXT



MAST30FDEXV

Specifications and features may vary. Please refer to the manufacturer's website for the latest updates.

PROFESSIONAL &
MASTER SERIES

BUILT-IN OVENS

24" CONVECTION OVEN

PROF24FSEXV

24" Professional Series - Electric Convection Single Oven



- Capacity 2.7 cu.ft
- Cooking Modes: Bake, Bottom heat bake, Broil, Convection, Convection bake,
- Convection broil, Pizza, Upper heat bake
- Special features: Defrost, Dehydrate, Fast preheat, Light, Proof, Timer
- 5 shelf levels
- Fingerprint free stainless steel
- Bake: 2050 W Broiler: 2400 W Convection: 1800 W
- Flush installation with cabinet doors
- 1 wire shelf flat + 1 wire shelf shaped + 1 baking tray with roasting trivet
- Metal finish knobs with LED display interface
- Soft-motion door hinges
- Triple glass inner oven door
- Dimensions: W 23 3/8" / D 21 13/16" / H 23 3/8"

24" CONVECTION SPEED OVEN (COMBI MICROWAVE)

PROF24SOEX

24" Professional Series - Electric Convection Speed Oven



- Combination of electric convection + grill with microwave
- LED touch control glass interface
- Fingerprint free stainless steel
- Flush front design
- Suitable for undercounter installation
- 5 power levels (200 W to 1000 W)
- Cooking Modes: Broil, Convection, Convection broil, Convection microwave, Microwave, Microwave broil, Pizza
- Soft Motion door hinge
- Special Features: Defrost by time, Defrost by weight, Light, Popcorn, Recipes, Timer
- European convection ring heating element
- 1.35 cu.ft stainless cavity
- Broiler: 1500W Convection: 1600 W
- Cooling fan + 1 roasting trivet
- Glass turntable
- Side Panels (2): W 2 31/32" / H 17 29/32"
- W 23 7/16" / D min. 17 3/4 max. 20 7/16" H 17 15/16"

30" CONVECTION SPEED OVEN

PROF30SOEX

30" Professional Series - Electric Convection Speed Oven

MAST30SOEX

30" Master Series - Electric Convection Speed Oven



MAST30SOEX

- Combination of electric convection + grill with microwave
- Touch LED display
- Fingerprint free stainless steel
- Flush front design
- 1.34 cu.ft stainless cavity
- Cooking Modes: Broil, Convection, Convection broil, Convection microwave, Microwave, Microwave broil, Pizza
- Special Features: Defrost by time, Defrost by weight, Light, Popcorn, Recipes, Timer
- Cooling fan + 1 roasting trivet
- 1 glass turntable
- 2 shelf positions
- Suitable for undercounter installation
- Dimensions: W 29 7/8" / D 21 1/4" / H 18 3/4"

30" CONVECTION STEAM OVEN

PROF30CSEX

30" Professional Series - Electric convection Steam oven

MAST30CSEX

30" Master Series - Electric convection Steam oven



PROF30CSEX

- Combination of electric convection + grill with steam (6 functions)
- Touch LED display + knobs
- Fingerprint free stainless steel
- Flush front design
- Suitable for undercounter installation
- 1.10 cu.ft stainless cavity
- 1 stainless tray and 1 perforated stainless tray
- 2 shelf positions
- Dimensions: W 29 3/4" / D 21 17/64" / H 18 3/4"

Specifications and features may vary. Please refer to the manufacturer's website for the latest updates.

PROFESSIONAL &
MASTER SERIES

SPECIALITY OVENS

24" BUILT-IN MICROWAVE OVEN

MO30STANE/24	24" Microwave oven
FR30PROX	30" Width installation - Stainless steel frame required



MO30STANE + FR30PROX

- Style to match with Professional and Master Series
- Capacity 2 cu.ft
- 10 power levels / Power 1100 watts
- Turntable diameter 16"
- White cavity finishing
- Sensor heat, defrost, cook function, timer
- Preset cooking modes
- Dimensions: W 24" / D 21 3/4" / H 12 1/2"
- Frame dimensions: W 29 7/8" / D 1" / H 18 1/4"

OVER THE RANGE MICROWAVE (OTR)

KOTR24MXE	24" Microwave Hood without handle
KOTR30XV	30" Microwave Hood without handle
KOTR30X	30" Microwave Hood with handle



KOTR24MXE



KOTR30XV

- 300 CFM
- 10 power levels, pre-set cooking modes, timer and sensor controls for reheat, defrost and cook
- Surface lighting and interior lighting
- Touch controls with LED display
- 10 power levels / Power 1000 watts
- Glass tray (turntable) included
- 1 chromed wire shelf (XV only)
- Oven volume XE : 1.4 cu.ft / XV : 1.9 cu.ft / X : 1.6 cu.ft

- 24" XE dimensions : W 23 7/8" / D 16 1/4" / H 17 1/2"
- 30" XV dimensions : W 29 7/8" / D 15 1/4" / H 16 7/8"
- 30" X dimensions : W 29 13/16" / D 14 7/8" / H 16 1/8"



KOTR30X

MICROWAVE DRAWER

MD24X	24" Microwave Drawer
-------	----------------------



- Net Oven Volume 1.2 cu. ft.
- 11 power levels up to 950W max
- Anti-fingerprint stainless treatment
- LED digital touch UI
- White cavity with ceramic base
- Undercounter or column installation
- Dimensions: W 23 7/8" / D 21 5/8" / H 15 7/8"

WARMING DRAWER

PROF30WDEX	30" Professional Series - Warming drawer
MAST30WDEX	30" Master Series - Warming drawer



PROF30WDEX



MAST30WDEX

- Capacity 2.3 cu.ft
- Flush front design
- Fingerprint free stainless steel
- Tempered glass bottom
- Soft closing operation
- Power rating 550W
- Temperature: 85° F - 170° F
- Dimensions: W 29 7/8" / D 22" / H 9 7/8"

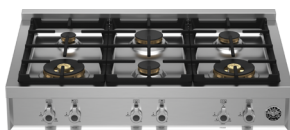
Specifications and features may vary. Please refer to the manufacturer's website for the latest updates.

PROFESSIONAL &
MASTER SERIES

RANGETOPS & COOKTOPS

GAS RANGETOPS

PROF486GRTBXT	Professional Series - 48" gas rangetop - 6 brass burners + griddle
MAST486GRTBXT	Master Series - 48" gas rangetop - 6 brass burners + griddle
PROF366RTBXT	Professional Series - 36" gas rangetop - 6 brass burners
MAST366RTBXT	Master Series - 36" gas rangetop - 6 brass burners
MAST366RTXE	Master Series - 36" gas rangetop - 6 aluminum burners



PROF366RTBXT



MAST366RTXE

- 19,000 BTU power burner with dual ring flame delivering fastest time-to-boil in class
- Electric griddle: 1100 Watts (48" model only)
- Cast iron professional grade grates
- Propane conversion kit included
- Thermocouple gas shut-off safety
- Wok ring, simmer plate and 3/4" backguard included
- 48" dimensions: W 47 7/8" / H 7 5/8" - D 25 1/4"
- 36" dimensions: W 35 3/4" / H 7 5/8" (with grates) / D 25 1/4"



MAST486GRTBXT

INDUCTION RANGETOPS

MAST365IRTXT	Master Series - 36" Induction rangetop - 5 Burner
PROF365IRTXT	Professional Series - 36" Induction rangetop - 5 Burner



MAST365IRTXT

- 5 induction cooking zones/1 bridge zone
- 9+Booster
- Residual heat indicator
- Island Trim included
- Dimensions: W 35 3/4" / H 6 5/8" / D 25 1/4"

GAS COOKTOPS - FRONT CONTROLS

PROF244CTXV	Professional Series - 24" gas cooktop - 4 aluminum burners - low profile maintop
PROF305CTXV	Professional Series - 30" gas cooktop - 5 aluminum burners - low profile maintop
PROF365CTXV	Professional Series - 36" gas cooktop - 5 aluminum burners - low profile maintop



PROF244CTXV



PROF365CTXV

- Aluminum burners 750-13,000 BTU (24" & 30")
- Aluminum burners 750-18,000 BTU (36")
- Cast iron grates
- Propane conversion kit included
- Thermocouple gas shut-off safety
- Easy to clean one-piece surface
- Slim depth installation compatible
- 36" dimensions: W 35 13/16" / H 1 1/2" / D 21 1/16"
- 24" dimensions: W 23 1/4" / H 1 1/2" / D 19 5/8"

Specifications and features may vary. Please refer to the manufacturer's website for the latest updates.

PROFESSIONAL &
MASTER SERIES

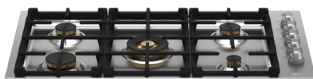
COOKTOPS

GAS COOKTOPS - SIDE CONTROLS

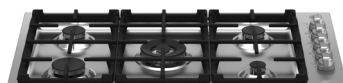
PROF366QBXT	Professional Series - 36" Drop-in Gas Cooktop 6 Brass Burners
MAST366QBXT	Master Series - 36" Drop-in Gas Cooktop 6 Brass Burners
PROF365QBXT	Professional Series - 36" Drop-in Gas Cooktop 5 Brass Burners
MAST365QBXT	Master Series - 36" Drop-in Gas Cooktop 5 Brass Burners
PROF365QXE	Professional Series - 36" Drop-in Gas Cooktop 5 Aluminum Burners
MAST365QXE	Master Series - 36" Drop-in Gas Cooktop 5 Aluminum Burners
PROF304QBXT	Professional Series - 30" Drop-in Gas Cooktop 4 Brass Burners
MAST304QBXT	Master Series - 30" Drop-in Gas Cooktop 4 Brass Burners
PROF304QXE	Professional Series - 30" Drop-in Gas Cooktop 4 Aluminum Burners
MAST304QXE	Master Series - 30" Drop-in Gas Cooktop 4 Aluminum Burners



PROF366QBXT



MAST365QBXT



MAST365QXE



PROF304QXE



MAST304QXE

- 18000 BTU power burner with dual ring flame delivering fastest time-to-boil in class
- Cast iron professional grade grates
- Propane conversion kit included
- Thermocouple gas shut-off safety
- Wok ring, simmer plate
- Dimensions - 36" high profile: W 36 $\frac{13}{32}$ " / H 1 $\frac{3}{8}$ " / D 21 $\frac{1}{4}$ "
 - 36" low* profile: W 36 $\frac{13}{16}$ " / H 2 $\frac{1}{16}$ " / D 21 $\frac{1}{4}$ "
 - 30" low* profile: W 29 $\frac{7}{16}$ " / H 2 $\frac{5}{8}$ " / D 21 $\frac{1}{4}$ "

*Low profile: the height is integrated in countertop

Specifications and features may vary. Please refer to the manufacturer's website for the latest updates.

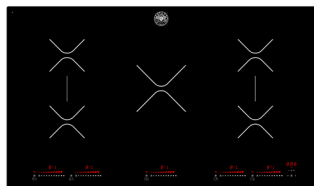
PROFESSIONAL &
MASTER

COOKTOPS

INDUCTION COOKTOP - TOUCH CONTROLS

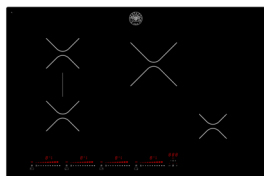
P365IAE	Professional/Master Series - 36" induction cooktop - 5 zones
P304IAE	Professional/Master Series - 30" induction cooktop - 4 zones

- Bevelled ceramic glass
- 14 Power levels
- Timed cooking function for each heating zone
- Digitally controlled sensors and residual heat indicators
- Wear-resistant ceramic glass surface, easy to clean



P365IAE

- Induction zones of up to 5500W
- Max Amp usage: 11100 W - power rating: 48 A
- 2 bridge cooking zones
- 36" dimensions: W 34 5/8" / D 20 15/32" / H 2 7/16"



P304IAE

- Induction zones of up to 3700W
- Max Amp usage: 7400 W - power rating: 32 A
- 1 bridge cooking zone
- 30" dimensions: W 30 1/16" / D 20 15/32" / H 2 7/16"

INDUCTION COOKTOP XV

PE244INDXV	Professional/Master Series - 24" induction cooktop - 4 zones
PE304INDXV	Professional/Master Series - 30" induction cooktop - 4 zones
PE365INDXV	Professional/Master Series - 36" induction cooktop - 5 zones

- Touch-through-glass slider controls
- 1 full surface bridge function
- Timed cooking function option for each induction zone
- 9 Power levels plus booster
- Residual Heat Indicator



PE365INDXV

PE244INDXV

- Induction zones of up to 2700W
- 208-240 V 60 HZ - 7400 W
- 30 Amp dedicated circuit
- 36" dimensions: W 23 1/4" / D 20 1/2" / H 2 15/16"

PE304INDXV

- Induction zones of up to 3600W
- 208-240 V 60 HZ - 8200 W
- 35 Amp dedicated circuit
- 36" dimensions: W 30 5/16" / D 20 1/2" / H 2 15/16"

PE365INDXV

- Induction zones of up to 3700W
- 208-240 V 60 HZ - 10400 W
- 35 Amp dedicated circuit
- 36" dimensions: W 35 7/16" / D 20 1/2" / H 2 15/16"

Specifications and features may vary. Please refer to the manufacturer's website for the latest updates.

PROFESSIONAL &
MASTER

COOKTOPS

INDUCTION DOWNDRAFT COOKTOP

PE364IDDNET

Professional/Master Series - 36" induction downdraft cooktop



- 4 induction zones of up to 3700W
- 2 bridge cooking zones
- Digital touch-through-glass slide control
- Central downdraft 400 CFM
- Dishwasher safe aluminum mesh grease filter
- Can be installed vented or recirculated
- 1.5 Sones (min sound level)
- Dimensions: W 36 1/6" / D 20 1/4" / H 8 1/4"

ELECTRIC COOKTOP

PE304CER

Professional/Master Series - 30" electric cooktop - 4 zones

PE244CER

Professional/Master Series - 24" electric cooktop - 4 zones



PE304CER

- Ceramic glass
- Front Touch Controls
- Residual heat indicator
- ADA Compliant
- **PE304CER**
 - 4 zones with flexible heating areas of up to 2300W
 - Dimensions: W 30" / H 3 1/8" / D 20 1/2"
- **PE244CER**
 - 4 zones with flexible heating areas of up to 1800W
 - Dimensions: W 24" / H 3 1/8" / D 20 1/2"

Specifications and features may vary. Please refer to the manufacturer's website for the latest updates.

ALL SERIES

FREESTANDING REFRIGERATION

36" FREESTANDING FRENCH DOOR

REF36FDFIXNV 36" Refrigerator with automatic ice-maker in freezer

REF36FDZXNT 36" Refrigerator with automatic ice-maker with delivery through the door

REF36FDFIXNB 36" Refrigerator with automatic ice-maker in freezer

REF36FDFIXNV / REF36FDFIXNB

- 22.5 cu.ft.
- Energystar Rated
- Precise temperature provided by 3 evaporators and dual air-cooling flow with independent no-frost system
- Internal digital LED touch interface
- Top and sidewall LED lights
- 1 fixed and 4 height-adjustable refrigerator shelves
- 1 large crisper with preset temp
- 2 medium crisper with adjustable humidity
- 6 gallon sized door bin storage
- Automatic ice maker 3.08 lbs / 24h
- 45 dbA
- Dimensions: W 35 7/8" / H 69 7/8" / D 29" (without handles)

REF36FDFZXNT

- 21.5 cu.ft.
- Energystar Rated
- Precise temperature provided by 3 evaporators and dual air-cooling flow with independent no-frost system
- Quattro Temp Zone drawer with customize settings
- Internal digital LED touch interface
- Top and sidewall LED lights
- 1 fixed and 4 height-adjustable refrigerator shelves
- 2 large crisper with adjustable humidity
- 6 gallon sized door bin storage
- Automatic ice maker 4.4 lbs / 24h
- Internal water dispenser
- 43 dbA
- ADA Compliant
- Dimensions: W 35 7/8" / H 69 7/8" / D 29" (without handles)



REF36FDFIXNV

HANDLE KIT REQUIRED



REF36FDFZXNT

Master Series

HANDLE KIT REQUIRED



REF36FDFZXNT

Heritage Series

HANDLE KIT REQUIRED



REF36FDFIXNB

NO HANDLE REQUIRED

36" FRENCH DOOR ACCESSORIES (HANDLE KIT CONTAINS 4 HANDLES)

HK36PROFDX Handle kit for 36" French Door refrigerator - Professional Series

HK36MASFDX Handle kit for 36" French Door refrigerator - Master Series

HK36HERFDX Handle kit for 36" French Door refrigerator - Heritage Series *

BHFDX Bottle holder (NV model)

*See page 38 for Collezione Metalli Décor Set.

Specifications and features may vary. Please refer to the manufacturer's website for the latest updates.



PROFESSIONAL &
MASTER SERIES

FREESTANDING REFRIGERATION

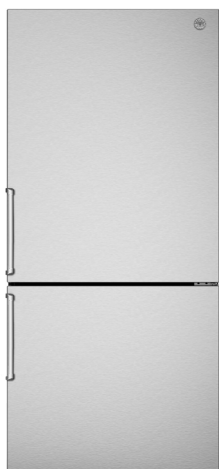
FREESTANDING BOTTOM MOUNT REFRIGERATOR

REF31BMFIXNV 31" Stainless Refrigerator / Ice Maker (3.3 lbs / 24 h)

- REF31BMFIXNV 17.7 total cu.ft capacity
- Surround Cooling System - Optimized airflow design with multiple vents on every shelf level for even temperature throughout entire refrigerator
- Total No-Frost system: automated defrosting of evaporator ensures food stays always fresh
- Fridge compartment: 1 stationary + 3 height adjustable shelves and 2 crispers
- Door Storage: 1 full width, 4 height-adjustable half width
- Freezer compartment: 2 drawers + 2 sliding shelves
- Fast freeze - 2 air vents in top freezer drawer accelerate temperature drop, helping lock vitamins and maintain flavors
- Electronic LED touch interface.
- LED lighting
- Flat front stainless steel doors with no-fingerprint surface treatment
- Reversible doors
- Dimensions W 31 1/4" / H 65 1/2" - 66 5/8" / D 27 1/2" (without handles)



THE REFRIGERATOR MUST BE ORDERED WITH THE HANDLE KIT (_ _ _ HK24BM)



REF31BMFIXNV
+ MASHK24BM

FREESTANDING BOTTOM MOUNT REFRIGERATOR

RBM24F4FXNV 24" Stainless Refrigerator

REF24BMFIXNV 24" Stainless Refrigerator / Ice Maker (1.8 lbs / 24 h)

- Capacity: Ref 7.9 cu.ft / Frz 3.5 cu.ft
- No fingerprint stainless steel
- Internal digital LED touch interface
- Lighting LED on the top
- Refrigerator shelves: 2 fixed and 1 height-adjustable
- Refrigerator drawers: 1 + 1 fresco drawer with separate temperature and humidity control
- Fresco drawer with separate temperature control (27 to 37 °F) and adjustable humidity.
- Freezer compartment: 3 drawers
- Door storage: 1 stationary + 2 height-adjustable
- Settings: Super cool, Super freeze, Eco mode, Vacation mode, Sabbath mode
- 39 dbA
- Reversible doors
- Dimensions: W 23 7/16" / H 73 1/4" / D 23 1/4" (without handles)



THE REFRIGERATOR MUST BE ORDERED WITH THE HANDLE KIT (_ _ _ HK24BM)

HANDLE KIT FOR REF31BMFIXNV AND REF24BMFXNV

(KIT CONTAINS 2 HANDLES)

PROHK24BM Handle kit for 24" & 31" bottom mount refrigerator - Professional Series

MASHK24BM Handle kit for 24" & 31" bottom mount refrigerator - Master Series



Specifications and features may vary. Please refer to the manufacturer's website for the latest updates.

ALL SERIES

BUILT-IN REFRIGERATION



REF36FDBZPNV/24
+ SP36FDX/24
+ HK36PROFDBXV

BUILT-IN FRENCH DOOR / ICE & WATER

REF36FDBZPNV/24 36" French Door Refrigerator – Panel Ready

- Energy Star rated 19.5 cu.ft. of total storage capacity, powered by variable-speed compressor and dual evaporators
- Flush or proud installation in 84" high kitchen cabinets
- Dual Cooling Shield System: automated defrosting of evaporator ensures food stays always fresh
- Precise temperature control for optimal food preservation: the Fresco drawer in the refrigerator compartment with independent temperature settings (30°-41°F) allows for optimal storage of meat, cold cuts, shellfish, fish and dairy products
- Automatic ice maker with daily capacity of 3.9 lbs of filtered ice
- Internal water dispenser with inline filter for hygienically clean drinking water and ice
- Digital LED touch interface with user-friendly controls for temperature, speed-freeze and ice making
- Soft close refrigerator crispers and metal freezer bins
- Height-adjustable gallon-size door storage bins
- 2 years parts & labor warranty
- ADA compliant
- Dimensions: Stainless W 35 3/4" / H 83 5/8" * / D 23 5/8" (without handles)
*1 5/8" for the adjustable max height of the leveling feet



REF36FDBZPNV/24
+ SP36FDCV
+ HK36PROFDBTV

ACCESSORIES FOR REF36FDBZPNV/24

A HANDLE KIT MUST BE ORDERED FOR THE STAINLESS AND CARBONIO PANEL KIT

SP36FDX/24	Stainless Steel Door Panel Kit
HK36PROFDBXV	Stainless Handle kit for Professional series
HK36MASFDBXV	Stainless Handle kit for Master series*
HK36HERFDBXV	Stainless Handle kit for Heritage Series *
SP36FDCV	Carbonio Door Panel Kit
HK36PROFDBTV	Titanium Handle Kit for Carbonio Door Panel

*See page 38 for Collezione Metalli Décor Set.

ALL SERIES

BUILT-IN REFRIGERATION



BUILT-IN BOTTOM MOUNT PANEL READY - FIELD REVERSIBLE DOOR (V TRIM)

REF24BMBIPNV	24" Refrigerator/Freezer - Panel Ready with Ice & Water
REF30BMBZPNV	30" Refrigerator/Freezer - Panel Ready with Ice & Water
REF36BMBZPNV	36" Refrigerator/Freezer - Panel Ready with Ice & Water

- Capacity: 24" - 8.4 cu.ft. / 30"- 16 cu.ft. / 36"- 19.7 cu.ft.
- Internal digital LED touch interface
- Top and sidewall LED lights
- Refrigerator shelves: 1 stationary + 2 height-adjustable
- Refrigerator crispers: 1 + 1 fresco drawer with separate
- Temperature and humidity control
- Freezer compartment: 2 drawers (metal)
- Door storage: 1 gallon sized + 2 height adjustable bins
- Automatic ice maker 3.9 lbs / 24 hrs
- Flush or proud installation in 84" high kitchen cabinets
- 43 dbA
- 24" Dimensions:
W 21 1/4" / H 83 5/16" + 1/4" adjustable leveling / D 24 1/4"
- 30" Dimensions:
W 29 3/4" / H 83 5/16" + 1/4" adjustable leveling / D 24 1/4"
- 36" Dimensions:
W 35 3/4" / H 83 5/16" + 1/4" adjustable leveling / D 24 1/4"

CTXV	Connection Trim for side-by-side installation
SP30BMX	30" Stainless steel door panels kit
SP36BMX	36" Stainless steel door panels kit
PROHK24BM	24" Handle kit - Professional series
MASHK24BM	24" Handle kit - Master series
PROHK30PI	Handle kit - Professional series
MASHK30PI	Handle kit - Master series
HERHK30PI	Handle kit - Heritage series
PROHK36PI	36" Handle kit - Professional series
MASHK36PI	36" Handle kit - Master series
HERHK36PI	36" Handle kit - Heritage series

A HANDLE KIT MUST BE ORDERED FOR THE STAINLESS PANEL INSTALLED REFRIGERATORS.

BUILT-IN REFRIGERATION



REF36BMBIXLT
+ PROHK36PI



BUILT-IN BOTTOM MOUNT REFRIGERATOR WITH ICE MAKER (T TRIM)

REF36BMBIXRT	36" Refrigerator - Stainless Panel installed - Right hinge
REF36BMBIXLT	36" Refrigerator - Stainless Panel installed - Left hinge
REF30BMBIXRT	30" Refrigerator - Stainless Panel installed - Right hinge
REF30BMBIXLT	30" Refrigerator - Stainless Panel installed - Left hinge
REF36BMBIPRT	36" Refrigerator - Panel ready - Right hinge
REF36BMBIPLT	36" Refrigerator - Panel ready - Left hinge
REF30BMBIPRT	30" Refrigerator - Panel ready - Right hinge
REF30BMBIPLT	30" Refrigerator - Panel ready - Left hinge

- True flush installation with proprietary 'Lift & Swing' hinges, ensuring perfect door balance and requiring minimal clearance from adjacent cabinets
- All metal construction liner for longer durability and optimized insulation for max cold retention
- Precise temperature control for optimal food preservation: lateral airflow system, powered by dual variable-speed compressors and dual evaporators, reduces cold loss when opening door
- FlexMode control to set temperature in lower drawer compartment as Freezer, Fresco (28-36°F) or Fridge (36-46°F)
- Integrated water filter located in the low temperature section ideal for hygienically clean drinking water and ice
- Automatic custom ice maker with control for ice cube size
- Digital TFT Touch & Scroll interface with user-friendly navigation for temperature, humidity and custom setting selection
- 41 dBA
- 36" - 19.6 cu.ft. capacity
- 30" - 15.5 cu.ft. capacity
- Dimensions:
 - 30" Panel Ready: W 29 15/16" / H 83 1/2" / D 24"
 - 36" Panel Ready: W 35 15/16" / H 83 1/2" / D 24"
 - 36" Stainless: W 35 5/8" / H 83 1/2" / D 24 3/16" (without handle)
 - 30" Stainless: W 29 5/8" / H 83 1/2" / D 24 3/16" (without handle)

901470	Connection trim for side-by-side stainless panel installed installation
901469	Connection trim for side-by-side panel ready installation
901561	48" Bridge Toekick

A HANDLE KIT MUST BE ORDERED FOR THE STAINLESS PANEL INSTALLED REFRIGERATORS.

HANDLE KIT FOR BUILT-IN: BOTTOM MOUNTS (KIT CONTAINS 2 HANDLES)

PROHK36PI	Handle kit for 36" Built-in refrigerator - Professional Series
MASHK36PI	Handle kit for 36" Built-in refrigerator - Master Series
HERHK36PI	Handle kit for 36" Built-in refrigerator - Heritage Series *
PROHK30PI	Handle kit for 30" Built-in refrigerator - Professional Series
MASHK30PI	Handle kit for 30" Built-in refrigerator - Master Series
HERHK30PI	Handle kit for 30" Built-in refrigerator - Heritage Series *



PRO MASTER HERITAGE

Specifications and features may vary. Please refer to the manufacturer's website for the latest updates.

ALL SERIES

BUILT-IN REFRIGERATION



REF30RCBPNV



BUILT-IN REFRIGERATOR COLUMNS (V TRIM)

REF24RCBPNV	24" Built-in Refrigerator Column - Panel Ready - With Internal Water dispenser
REF30RCBPNV	30" Built-in Refrigerator column - Panel Ready - With Internal Water dispenser

- Internal digital LED touch interface
- Stainless steel back wall
- LED lights on sides and top
- Open door alarm
- Reversible door
- ADA Compliant, CEC, ETL
- 41 dbA
- 30" Capacity: 16.6 cu.ft
- 24" Capacity: 12.5 cu.ft
- 1 stationary + 3 height adjustable shelves
- 1 crisper + 3 fresco drawers with separate temperature control
- 1 height-adjustable gallon size + 2 stationary bins
- Modes: Super cool, Eco mode, Vacation mode, Sabbath mode, water filter mode for internal water dispenser units
- 24" Dimensions: H 83 $\frac{5}{16}$ + $\frac{1}{4}$ " x W 23 $\frac{3}{4}$ " x D 23 $\frac{5}{16}$ " (with door)
- 30" Dimensions: H 83 $\frac{5}{16}$ + $\frac{1}{4}$ " x W 29 $\frac{3}{4}$ " x D 23 $\frac{5}{16}$ " (with door)



REF18FCBIPLV

BUILT-IN FREEZER COLUMNS (V TRIM)

REF18FCBIPLV	18" Built-in Freezer column - Panel Ready - Left swing door
REF18FCBIPRV	18" Built-in Freezer column - Panel Ready - Right swing door
REF24FCBIPNV	24" Built-in Freezer Column - Panel Ready - Field Reversible

- Internal digital LED touch interface
- Stainless steel back wall
- LED lights on sides and top
- Ice Maker (3.9 lbs / 24hrs)
- Open door alarm
- Reversible door
- ADA Compliant, CEC, ETL
- 43 dbA
- 18" Capacity: 8.6 cu.ft
- 24" Capacity: 12.5 cu.ft
- 1 stationary + 3 height adjustable
- 4 drawers
- 18" Dimensions: H 83 $\frac{5}{16}$ + $\frac{1}{4}$ " x W 23 $\frac{3}{4}$ " x D 23 $\frac{5}{16}$ " (with door)
- 24" Dimensions: H 83 $\frac{5}{16}$ + $\frac{1}{4}$ " x W 23 $\frac{3}{4}$ " x D 23 $\frac{5}{16}$ " (with door)



REF18WCBPRV

BUILT-IN WINE COLUMNS (V TRIM)

REF18WCBPLV	18" Built-in Wine Column - Panel Ready - Left swing door
REF18WCBPRV	18" Built-in Wine Column - Panel Ready - Right swing door
REF24WCBPNV	24" Built-in Wine Column - Panel Ready - Reversible door

- Stainless steel back wall
- Internal digital LED touch interface
- Lighting LED lights interior illumination
- 14 beechwood shelves on telescopic smooth motion glide system
- Three temperature zones (41°F to 68°F)
- 18" : 68 Bottle capacity
- 24" : 100 Bottle capacity
- Modes ; Entertainment mode, Light color selection, Sabbath mode
- Door alarm
- 18" Dimensions: H 83 $\frac{5}{16}$ + $\frac{1}{4}$ " x W 17 $\frac{3}{4}$ " x D 23 $\frac{1}{2}$ " (with door)
- 24" Dimensions: H 83 $\frac{5}{16}$ + $\frac{1}{4}$ " x W 23 $\frac{3}{4}$ " x D 23 $\frac{1}{2}$ " (with door)

Specifications and features may vary. Please refer to the manufacturer's website for the latest updates.

ALL SERIES

BUILT-IN REFRIGERATION

OPTIONAL ACCESSORIES

A HANDLE KIT MUST BE ORDERED FOR THE STAINLESS AND CARBONIO PANEL KIT

SP18CX	Stainless steel door panel kit for 18" freezer columns
SP24CX	Stainless steel door panel kit for 24" refrigerator and freezer columns
SP30CX	Stainless steel door panel kit for 30" refrigerator
SP18WXV	Stainless Steel door panel Kit for 18" wine column
SP24WXV	Stainless Steel door panel Kit for 24" wine column
SP18CC	Carbonio door panel kit for 18" freezer columns
SP24CC	Carbonio door panel kit for 24" refrigerator and freezer columns
SP30CC	Carbonio door panel kit for 30" refrigerator
SP18WCC	Carbonio door panel kit for 18" wine column
SP24WCC	Carbonio door panel kit for 24" wine column

PROHKCOL	Stainless Handle kit for Professional series columns
MASHKCOL	Stainless Handle kit for Master series columns*
HERHKCOL	Stainless Handle kit for column refrigerator - Heritage Series *
PROHKCOLT	Titanium Handle for Carbonio panel

901560	42" Stainless Bridge Toekick
901561	48" Stainless Bridge Toekick

* See page 38 for Collezione Metalli Décor Set.



REF30RCBPNV + SP30CX
+ PROHKCOL



REF24RCBIPNV+REF24WCBPNV+ REF24FCBIPNV+SP24CC+SP24WCC+PROHKCOLT

Specifications and features may vary. Please refer to the manufacturer's website for the latest updates.

ALL SERIES

BUILT-IN REFRIGERATION



REF36RCPRL/23

BUILT-IN REFRIGERATOR COLUMNS (T TRIM)

REF36RCPIXL/23	36" Built-in Refrigerator column - Stainless - Left swing door
REF36RCPIXR/23	36" Built-in Refrigerator column - Stainless - Right swing door
REF30RCPIXL/23	30" Built-in Refrigerator column - Stainless - Left swing door
REF30RCPIXR/23	30" Built-in Refrigerator column - Stainless - Right swing door
REF24RCPIXL/23	24" Built-in Refrigerator column - Stainless - Left swing door
REF24RCPIXR/23	24" Built-in Refrigerator column - Stainless - Right swing door
REF36RCPRL/23	36" Built-in Refrigerator column - Panel Ready - Left swing door
REF36RCPRR/23	36" Built-in Refrigerator column - Panel Ready - Right swing door
REF30RCPRL/23	30" Built-in Refrigerator column - Panel Ready - Left swing door
REF30RCPRR/23	30" Built-in Refrigerator column - Panel Ready - Right swing door
REF24RCPRL/23	24" Built-in Refrigerator column - Panel Ready - Left swing door
REF24RCPRR/23	24" Built-in Refrigerator column - Panel Ready - Right swing door

<ul style="list-style-type: none"> Internal LED touch interface with intuitive controls Extra-bright LED lights interior illumination on top and sides White Aluminum Interior 4 full-width shelves, 3 drawers and 3 full-width door shelves Lateral airflow cooling system 	<ul style="list-style-type: none"> Modes: Shopping, Vacation, Sabbath mode Door Alarm Capacity: 30"-16.84 cu.ft. / 24"-12.64 cu.ft. / 18"-8.22 cu.ft Refrigerant R600a 	Stainless Dimensions 36" - H 84" x W 36" x D 24" 30" - H 84" x W 30" x D 24" 24" - H 84" x W 24" x D 24" Panel Ready Dimensions 36" - H 84" x W 36" x D 24 3/16" 30" - H 84" x W 30" x D 24 3/16" 24" - H 84" x W 24" x D 24 3/16"
--	--	---



REF24RCPRR/23

BUILT-IN FREEZER COLUMNS (T TRIM)

REF30FCIPIXL/23	30" Built-in Freezer column - Stainless - Left swing door
REF30FCIPIXR/23	30" Built-in Freezer column - Stainless - Right swing door
REF24FCIPIXL/23	24" Built-in Freezer column - Stainless - Left swing door
REF24FCIPIXR/23	24" Built-in Freezer column - Stainless - Right swing door
REF18FCIPIXL/23	18" Built-in Freezer column - Stainless - Left swing door
REF18FCIPIXR/23	18" Built-in Freezer column - Stainless - Right swing door
REF30FCIPRL/23	30" Built-in Freezer column - Panel Ready - Left swing door
REF30FCIPRR/23	30" Built-in Freezer column - Panel Ready - Right swing door
REF24FCIPRL/23	24" Built-in Freezer column - Panel Ready - Left swing door
REF24FCIPRR/23	24" Built-in Freezer column - Panel Ready - Right swing door
REF18FCIPRL/23	18" Built-in Freezer column - Panel Ready - Left swing door
REF18FCIPRR/23	18" Built-in Freezer column - Panel Ready - Right swing door

<ul style="list-style-type: none"> Internal LED touch interface with intuitive controls Extra-bright LED lights interior illumination on top and sides White Aluminum Interior 2 full-width shelves, 2 drawers and 2 full-width door shelves Automatic Ice Maker (2.2 lbs/24 hrs) 	<ul style="list-style-type: none"> Lateral airflow cooling system Modes: Shopping, Vacation Bottle Cooler, Ice Maker, Water Filter, Super Ice, Sabbath mode Door Alarm Ice Tray included Capacity: 30"-16.84 cu.ft. / 24"-12.64 cu.ft. / 18"-8.22 cu.ft Refrigerant R600a 	Stainless Dimensions 30" - H 84" x W 30" x D 24" 24" - H 84" x W 24" x D 24" 18" - H 84" x W 18" x D 24" Panel Ready Dimensions 30" - H 84" x W 30" x D 24 3/16" 24" - H 84" x W 24" x D 24 3/16" 18" - H 84" x W 18" x D 24 3/16"
--	---	---

Specifications and features may vary. Please refer to the manufacturer's website for the latest updates.

ALL SERIES

BUILT-IN REFRIGERATION



REF18WCPRL/23

BUILT-IN WINE CELLAR COLUMNS (T TRIM)

REF24WCPIXL/23	24" Built-in Wine Cellar column - Stainless - Left swing door
REF24WCPIXR/23	24" Built-in Wine Cellar column - Stainless - Right swing door
REF18WCPIXL/23	18" Built-in Wine Cellar column - Stainless - Left swing door
REF18WCPIXR/23	18" Built-in Wine Cellar column - Stainless - Right swing door
REF24WCPRL/23	24" Built-in Wine Cellar column - Panel Ready - Left swing door
REF24WCPRR/23	24" Built-in Wine Cellar column - Panel Ready - Right swing door
REF18WCPRL/23	18" Built-in Wine Cellar column - Panel Ready - Left swing door
REF18WCPRR/23	18" Built-in Wine Cellar column - Panel Ready - Right swing door

- | | | |
|--|--|---|
| <ul style="list-style-type: none"> • Digital touch control interface inside • LED lights interior illumination • White aluminum interior • 12 wooden wine racks • Two temperature zones | <ul style="list-style-type: none"> • Modes: Humidity control, Sabbath mode • Door Alarm • 52 bottle capacity (18") • 80 bottle capacity (24") • Refrigerant R600a | <p>Stainless /Glass Door Dimensions</p> <p>24" - H 84" x W 24" x D 24"</p> <p>18" - H 84" x W 18" x D 24"</p> <p>Panel Ready /Glass Door Dimensions</p> <p>24" - H 84" x W 24" x D 24 3/16"</p> <p>18" - H 84" x W 18" x D 24 3/16"</p> |
|--|--|---|

A HANDLE KIT MUST BE ORDERED FOR THE STAINLESS PANEL INSTALLED COLUMNS.

PRO HERITAGE



MASTER

OPTIONAL ACCESSORIES

PROHKCOL	Handle kit for column refrigerator - Professional Series
MASHKCOL	Handle kit for column refrigerator - Master Series
HERHKCOL	Handle kit for column refrigerator - Heritage Series *
901560	42" Stainless Bridge Toekick
901561	48" Stainless Bridge Toekick

* See page 38 for Collezione Metalli Décor Set.

ALL SERIES



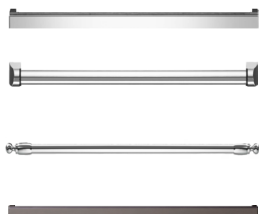
DW18S2IXV
+ HK24MASDWX



DW24T3IPV



DW24T3IXT
+ HK24PRODWX



CLEAN UP

BUILT-IN DISHWASHERS

DW18S2IPV	n/a	18" Standard Tub Dishwasher (ADA)	Panel Ready	V tier
DW18S2IXV	●	18" Standard Tub Dishwasher (ADA)	Stainless	V tier
DW24S3IPV	n/a	24" Standard Tub Dishwasher (ADA)	Panel Ready	V tier
DW24T3IPV	n/a	24" Tall Tub Dishwasher	Panel Ready	V tier
DW24T3IXV	●	24" Tall Tub Dishwasher	Stainless	V tier
DW24T3IPT	n/a	24" Tall Tub Dishwasher	Panel Ready	T tier
DW24T3IXT	●	24" Tall Tub Dishwasher	Stainless	T tier

- EnergyStar Rated
- LED display
- NSF-certified Sanitize option elevates washing temperature to 155°F for perfect and sanitized cleaning, eliminating 99.9% of all common household bacteria
- Dual pump system and triple-stage metal filter ensures consistent cleaning results

- 24" - 3 Racks : cutlery tray, height adjustable loaded middle rack and folding tines lower rack
- 18" - 2 Racks : height adjustable not loaded middle rack and folding tines lower rack
- Optionally choose Professional , Master Series or Heritage handle kit to match your cooking and refrigeration appliances

V tier:

- 6 wash cycles -auto, crystal and china, pots and pans, quick, regular, rinse and hold
- 18" : 8 place settings, 51 dB(A), 2 spray arms, 5 wash options - extra dry, delay start, 1 half load mode, sanitize, scrub
- 24": 15 place settings, 42 dB(A), 3 spray arms, floor projection status light, 7 wash options: accel, extra dry, delay start, 3 half load modes, sanitize, scrub, stealth

T tier:

- 16 place settings
- 39 dB(A)
- 1 LED light for tub illumination + floor projection status light
- 8 wash cycles - auto, crystal and china, normal plus, pots and pans, quick, regular, rinse and hold, soak and wash
- 7 wash options: accel, extra dry, delay start, 3 half load modes, sanitize, scrub, stealth
- Turbidity Sensor
- Water softener

ACCESSORIES FOR DISHWASHERS

HK18PRODWX	18" Handle kit - Professional series
HK18MASDWX	18" Handle kit - Master series
SP24DTC	Carbonio Panel Kit for 24" Tall Tub Dishwashers - DW24T3IPT, DW24T3IPV
HS24DW	Heavy Duty Springs
HK24PRODWX	24" Handle kit - Professional series
HK24MASDWX	24" Handle kit - Master series
HK24HERDWX	24" Handle kit - Heritage series*
HK24PRODWT	24" Titanium Handle Kit - Carbonio panel kit

* See page 38 for Collezione Metalli Décor Set.

Specifications and features may vary. Please refer to the manufacturer's website for the latest updates.

PROFESSIONAL &
MASTER SERIES

VENTILATION

UNDERMOUNT OR WALLMOUNT (DUCT COVER REQUIRED) HOOD

KU48PRO2X/14	48" Canopy hood - 2 motors - 1200 CFM - Stainless baffle filters
KU36PRO2X/14	36" Canopy hood - 2 motors - 1200 CFM - Stainless baffle filters
KU48PRO1X/14	48" Canopy hood - 1 motor - 600 CFM - Aluminum mesh filters
KU36PRO1X/14	36" Canopy hood - 1 motor - 600 CFM - Aluminum mesh filters
KU30PRO1X/14	30" Canopy hood - 1 motor - 600 CFM - Aluminum mesh filters
KU24PRO1X/14	24" Canopy hood - 1 motor - 600 CFM - Aluminum mesh filters



KU36PRO2X/14



KU30PRO1X/14

- Stainless steel
- LED lighting (2 motors: 4 lights / 1 motor: 2 lights)
- Electronic controls with buttons (3 speeds)

KU48PRO2X/14	W 47 13/16" / D 12" - 22 7/16" / H* 10 1/8"
KU36PRO2X/14	W 35 7/8" / D 12" - 22 7/16" / H* 10 1/8"
KU48PRO1X/14	W 47 13/16" / D 12" - 19 5/16" / H* 10 1/8"
KU36PRO1X/14	W 35 7/8" / D 12" - 19 5/16" / H* 10 1/8"
KU30PRO1X/14	W 29 15/16" / D 12" - 19 5/16" / H* 10 1/8"
KU24PRO1X/14	W 23 15/16" / D 12" - 19 5/16" / H* 10 1/8"

UNDERMOUNT OR WALLMOUNT (DUCT COVER REQUIRED) HOOD

KU36PRO1XV	36" Hood - 1 motor - 400 CFM - Aluminum mesh filters - Value version
KU30PRO1XV	30" Hood - 1 motor - 400 CFM - Aluminum mesh filters - Value version
KU24PRO1XV	24" Hood - 1 motor - 400 CFM - Aluminum mesh filters - Value version



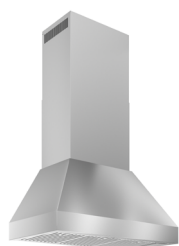
KU30PRO1XV

- Stainless steel
- 2 LED lights
- Slider controls (3 speeds)
- Recirculation kit available

KU36PRO1XV	W 36" / D 17 3/4" / H 8 17/64"
KU30PRO1XV	W 30" / D 17 3/4" / H 8 17/64"
KU24PRO1XV	W 24" / D 17 3/4" / H 8 17/64"

PROFESSIONAL CHIMNEY WALLMOUNT HOOD

KPH36XT	36" Wallmount chimney hood, 1 motor
KPH48XT	48" Wallmount chimney hood, 1 motor
KPH362XT	36" Wallmount chimney hood, 2 motors
KPH482XT	48" Wallmount chimney hood, 2 motors



- Stainless Steel
- Digital CFM reducer to 395 CFM (1 motor only)
- 600 CFM (1 motor) / 1200 CFM (2 motors)
- Energy-saving LED light bar
- Baffle stainless steel
- 36" Dimensions: W 35 15/16" / D 19 1/16" / H 34 7/16" to 52 15/16"
- 3 speed setting and booster
- 48" Dimensions: W 47 61/64" / D 19 1/16" / H 34 7/16" to 52 15/16"
- Electronic push buttons controls which include timer, filter saturation alarm and air-cleaning option

Optional accessories for all the above hoods see page 35, 36, 39

Specifications and features may vary. Please refer to the manufacturer's website for the latest updates.

ALL SERIES

VENTILATION



CONTEMPORARY WALLMOUNT HOOD

KMC48X	●	48" Canopy Hood - Stainless - Stainless baffle filters
KMC48NE	●	48" Canopy Hood - Matt Black - Stainless baffle filters
KMC48BI	○	48" Canopy Hood - Matt White - Stainless baffle filters
KMC36X	●	36" Canopy Hood - Stainless - Stainless baffle filters
KMC36NE	●	36" Canopy Hood - Matt Black - Stainless baffle filters
KMC36BI	○	36" Canopy Hood - Matt White - Stainless baffle filters
KMC30X	●	30" Canopy Hood - Stainless - Stainless baffle filters
KMC30NE	●	30" Canopy Hood - Matt Black - Stainless baffle filters
KMC30BI	○	30" Canopy Hood - Matt White - Stainless baffle filters

- 600 CFM (1 motor)
- Colour matched duct cover included (installs up to 10' ceilings)
- Electric button control with booster function
- LED light bar for illumination of worktop
- 59 dBA
- Recirculation & reducer kit available see accessory guide for details
- 48" dimension: W 48" / D 18 1/6" / H 12 5/8"
- 36" dimension: W 36" / D 18 1/6" / H 12 5/8"
- 30" dimension: W 30" / D 18 1/6" D / H 12 5/8"
- Total Height with duct cover 34 3/8" to 52 1/6"



WALLMOUNT CHIMNEY HOOD

KCH24XV	24" Chimney hood - 1 motors - 600 CFM
KCH30XV	30" Chimney hood - 1 motors - 600 CFM
KCH36XV	36" Chimney hood - 1 motors - 600 CFM

- Stainless steel
- 600 CFM (1 motor)
- Push buttons (3 speeds)
- 2 LED lights
- Duct cover included
- 38 dBA
- 24" dimensions: W 24" / D 17 1/6" / H 10 25/64"
- 30" dimensions: W 30" / D 17 1/6" / H 10 25/64"
- 36" dimensions: W 36" / D 17 1/6" / H 10 25/64"
- Total Height with duct cover: 27 3/4" to 46 1/6"



KT36XT

T-SHAPE WALL & ISLAND HOODS

KT30XT	●	30" T-Shape wall mounted hood	Stainless
KT36XT	●	36" T-Shape wall mounted hood	Stainless
KT36CAT	●	36" T-Shape wall mounted hood	Carbonio
KT48XT	●	48" T-Shape wall mounted hood	Stainless
KT48CAT	●	48" T-Shape wall mounted hood	Carbonio
KTI36XT	●	36" T-Shape island hood	Stainless
KTI42XT	●	42" T-Shape island hood	Stainless
KTI48XT	●	48" T-Shape island hood	Stainless

- 3 speed setting and booster
- Digital CFM reducer to 395/295 CFM
- Energy-saving LED lights
- Electronic push buttons controls
- Sound Level (min) 2.5 Sones
- ADA Compliant Remote Control Included
- Can be installed in recirculation mode with optional charcoal filter accessories
- 30" W dimensions: W 29 1/6" / D 17 1/6" / H 40 3/8"
- 36" W Dimensions: W 35 3/8" / D 17 1/6" / H 40 3/8"
- 48" W Dimensions: W 47 3/8" / D 17 1/6" / H 40 3/8"
- 36" I Dimensions: W 35 3/8" / D 26 5/8" / H 39 5/8"
- 42" I Dimensions: W 41 1/6" / D 26 5/8" / H 39 5/8"
- 48" I Dimensions: W 47 3/8" / D 26 5/8" / H 39 5/8"



KT36CAT

Specifications and features may vary. Please refer to the manufacturer's website for the latest updates.

ALL SERIES

VENTILATION

T-SHAPE BLACK GLASS WALLMOUNT HOOD

KG48X	48" Wallmount hood - 1 motor - 600 CFM - Stainless steel mesh filters
KG36X	36" Wallmount hood - 1 motor - 600 CFM - Stainless steel mesh filters
KG30X	30" Wallmount hood - 1 motor - 600 CFM - Stainless steel mesh filters



KG30X

- Stainless steel + black glass frontage
- 3 speed touch controls + booster
- 2 LED lights
- 42 dBA
- Duct cover included
- Hardwired
- 48" dimensions: W 47 1/16" / D 18 29/32" / H 3 5/32"
- 36" dimensions: W 35 7/8" / D 18 29/32" / H 3 5/32"
- 30" dimensions: W 30 7/8" / D 18 29/32" / H 3 5/32"
- Total Height with duct cover: 26 3/32" to 44 7/8"

Optional duct covers & accessories available see pages 35, 36, 39

HERITAGE WALLMOUNT HOOD

K48HERTX	48" Wallmount hood - 1 motor - 600 CFM
K36HERTX	36" Wallmount hood - 1 motor - 600 CFM



K36HERTX/KC36HERTNE

- Base unit is Stainless Steel
- Electronic controls (3 speeds)
- 2 LED lights
- Baffle Stainless Steel Filters
- Duct cover included (installs up to 10' ceilings)
- Must be sold with canopy
- 59 dBA
- Chrome utensils bar included with the canopy
- 48" dimensions: W 48" / D 19 1/16"
- 36" dimensions: W 36" / D 19 1/16"
- Total Height (with canopy) 38" 5/16" - 54" 1/16"
- Optional charcoal filter kit is see page 33

CANOPY TO COMPLETE ASSEMBLY

KC48HERTX	● 48" Canopy Hood Stainless
KC48HERTNE	● 48" Canopy Hood Black
KC48HERTAV	● 48" Canopy Hood Ivory
KC36HERTX	● 36" Canopy Hood Stainless
KC36HERTNE	● 36" Canopy Hood Black
KC36HERTAV	● 36" Canopy Hood Ivory

*See page 38 for Collezione Metalli Décor Set.

Specifications and features may vary. Please refer to the manufacturer's website for the latest updates.

ALL SERIES

VENTILATION

INSERT HOOD



KIN36XV



KIN36XT

KIN30XV	30" Insert hood - 1 motor - 560 CFM - Aluminum mesh filters
KIN36XV	36" Insert hood - 1 motor - 560 CFM - Aluminum mesh filters
KIN30XT	30" Insert hood - 1 motor - 600 CFM - Stainless baffle filters
KIN36XT	36" Insert hood - 2 motor - 1200 CFM - Stainless baffle filters
KIN48XT	48" Insert hood - 2 motor - 1200 CFM - Stainless baffle filters

KINxxXV

- 3 speed setting and booster
- Digital CFM reducer to 395/295 CFM
- Energy-saving LED lights
- Electronic push buttons controls
- Sound Level (min) 1.5 Sones
- Can be installed in recirculation mode with optional charcoal filter accessories
- 30" Dimensions: W 27 $\frac{5}{16}$ " / D 11 $\frac{13}{16}$ " / H 13"
- 36" Dimensions: W 33 $\frac{7}{8}$ " / D 11 $\frac{13}{16}$ " / H 13"

KINxxXT

- Dishwasher-safe restaurant style pro baffle filters
- 600 CFM with 3 speed setting and booster
- Digital CFM reducer to 395/295 CFM
- Energy-saving LED lights
- Electronic push buttons controls
- 30" Sound Level (min) 1.5 Sones
- 36 & 48" Sound Level (min) 2.48 Sones
- ADA Compliant Remote Control Included
- Can be installed in recirculation mode with optional charcoal filter accessories
- 30" Dimensions: W 28 $\frac{3}{8}$ " / D 13 $\frac{3}{4}$ " / H 12 $\frac{15}{16}$ "
- 36" Dimensions: W 32 $\frac{3}{4}$ " / D 18 $\frac{5}{16}$ " / H 11 $\frac{1}{8}$ "
- 48" Dimensions: W 44 $\frac{5}{16}$ " / D 18 $\frac{5}{16}$ " / H 11 $\frac{1}{8}$ "

VISOR HOOD



KTV30XV	30" Visor downdraft hood - 1 motor - 600 CFM - Aluminum mesh filters
KTV24XV	24" Visor downdraft hood - 1 motor - 300 CFM - Aluminum mesh filters

- Stainless steel
- Slider Controls (3 speeds)
- 2 LED lights
- Power cord connection
- Recirculation available see accessory guide for details
- Max telescopic extension is 8"3/4
- 30" dimensions: W 30" / D 11" / H 1 $\frac{5}{8}$ " (total H: 12 $\frac{1}{2}$ ")
- 24" dimensions: W 23 $\frac{1}{16}$ " / D 11" / H 1 $\frac{5}{8}$ " (total H: 12 $\frac{1}{2}$ ")



COFFEE MACHINE

BUILT-IN COFFEE MACHINE

CM242WXTX	24" Coffee machine with stainless steel finish panels
<ul style="list-style-type: none"> • Full Touch TFT Display 4.3" • Capacity of Water Tank 84.5 fl oz - 2.5 L • Pressure: 15 bar • Beverages: Espresso, coffee, cappuccino, Latte macchiato, Long, Doppio +, Cappuccino +, Capp mix, Americano, • Caffè latte, Milk, Flat white, Espresso macchiato, Double espresso • Specialties: Cup warmer, Steam, Hot Water 	<ul style="list-style-type: none"> • Brews 2 cups • Coffee Bean Tank 12 oz - 350 g • Beans or powder • Automatic rising and descaling • Programmable auto-start • 120V 60 HZ - 1350 W 6 Amp • 67" power cord with plug • Dimensions: W: 23 $\frac{5}{16}$" / H: 17 $\frac{3}{4}$" / D: 23 $\frac{5}{16}$"



Specifications and features may vary. Please refer to the manufacturer's website for the latest updates.

ALL SERIES

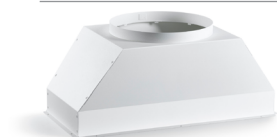
ACCESSORIES



901262	Duct Cover Narrow - Tall - up to 12' ceiling
901281	Duct Cover Narrow - Short - 8-10' ceiling
901263	Duct Cover Medium - KU models
901266	30" Duct Cover Large - KU models
901265	36" Duct Cover Large - KU models
901261	48" Duct Cover Large
901363	Duct Extension for all CONX/14 models
901583	Duct Cover Installation up to 10' - KT models
901585	Duct Cover Installation up to 10' - KTI models



901271	Recirculation Kit for KG48X-KG36X models
901335	Recirculation Kit for KU30PRO1XV model
901336	Recirculation Kit for KU36PRO1XV model
901396	Recirculation Kit for KU24PRO1XV model
901453	Charcoal Filters for KTV30PRO1X-KTV24PRO1X models
901516	Recirculation Kit for K48HERTX
901515	Recirculation Kit for K36HERTX



901264	Air Bracket for KU48-36 PRO 2X models
--------	---------------------------------------

Z130018	Flow through restrictor - Reducing performance from 440 or 600 cfm hoods to 300 cfm - To be installed in hoods that have only 1 motor
901530	Flow through restrictor for KMC models - 400 CFM
901544	Flow through restrictor for KMC models - 300 CFM
901575	Remote Control for KIN_XV hoods

Specifications and features may vary. Please refer to the manufacturer's website for the latest updates.

ALL SERIES
ACCESSORIES


901364 Baffle Filters for CONX/14 and HERX/14 models
1 package contains 4 filters

901365 Baffle Filters for KU48-36-24 PRO1X/14 models
1 package contains 4 filters

901366 Baffle Filters for KU30PRO1X/14 model
1 package contains 4 filters

901582 Baffle Filter kit for KT models

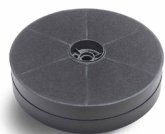
901581 Baffle Filter kit for KTI models



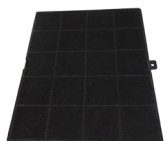
901402 Aluminium Mesh Filters for KU48-36-24 PRO1X/14 & KU36-24 PRO1XV models
1 package contains 4 filters

901403 Aluminium Mesh Filters for KU30PRO1X/14 & KU30PRO1XV models
1 package contains 4 filters

901404 Aluminium Mesh Filters for CONX/14 and HERX/14
1 package contains 4 filters



901394 Charcoal Filter Kit for PRO1X/14 & PRO2X/14 2 required for 2X



901395 Charcoal Filter Kit for CONX/14, and HERTX & PRO2X/14



901430 Charcoal Filter Kit for PRO1XV models

901497 Charcoal Filter Kit for KT models

901531 Charcoal Filter Kit for KMC, KTV_XV and New KIN models

901532 Durable Charcoal Filter Kit for KMC, KTV_XV and New KIN models
(can be washed and reused for up to 3 years)

901397 Charcoal Filters for KIN46-36-30 models

901488 Charcoal Filter Kit for KCH models

901578 Charcoal Filter Kit for KG models

901612 Charcoal filter KPH36XT and KPH48XT (1 motor only)

Specifications and features may vary. Please refer to the manufacturer's website for the latest updates.

ALL SERIES

ACCESSORIES
TOEKICK PANELS FOR RANGE


TKP48X	48" Toekick panel for Professional and Master Series
TKP36X	36" Toekick panel for Professional and Master Series
TKP30X	30" Toekick panel for Professional and Master Series
TKP24X	24" Toekick panel for Professional and Master Series



TKHERX	Square legs covers 5" wide - set of 2
--------	---------------------------------------

BACKGUARDS

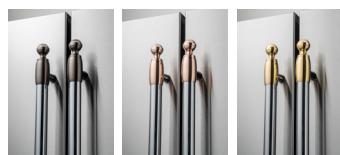

BGH48	4" backguard for 48" Professional and Master Series
BGH36	4" backguard for 36" Professional and Master Series
BGH30	4" backguard for 30" Professional and Master Series
BGH24	4" backguard for 24" Professional and Master Series

HERITAGE SERIES DÉCOR SETS

DSH CONTAINS 13 X CONTROL KNOBS AND 8 X HANDLE FINIALS - TO PERSONALIZE ONE RANGE AND HOOD IN 36" OR 48" SIZE.
DS2 CONTAINS 6 X HANDLE FINIALS TO PERSONALIZE ONE TWO-DOOR REFRIGERATOR AND A DISHWASHER.



DSHERTKHGO	Range & Hood kit - Gold finish
DSHERTKHPC	Range & Hood kit - Polished Copper finish
DSHERTKHSB	Range & Hood kit - Matt Satin Black finish



DS2HERTGO	Refrigerator & Dishwasher kit - Gold finish
DS2HERTPC	Refrigerator & Dishwasher kit - Polished Copper finish
DS2HERTSB	Refrigerator & Dishwasher kit - Matt Satin Black finish
901568	Chrome Flat End Caps For Heritage Series Handle

MASTER SERIES DÉCOR SET


DSMASGKSG

DSMASGKSB

DSMASDKSB	Black Nickel 12 knobs for Dual Fuel
DSMASDKSG	Satin Gold 12 knobs for Dual Fuel
DSMASGKSB	Black Nickel 10 knobs for Full Gas
DSMASGKSG	Satin Gold 10 knobs for Full Gas
DSMASIKSB	Black Nickel 11 knobs for Induction
DSMASIKSG	Satin Gold 11 knobs for Induction
DSMASHSB	Black Nickel 2 terminals (for 1 handle) for All types
DSMASHSG	Satin Gold 2 terminals (for 1 handle) for All types

Specifications and features may vary. Please refer to the manufacturer's website for the latest updates.

ALL SERIES

ACCESSORIES

COOKING



901490 Telescopic glide set for PROF Series 24" wall ovens



901511 Telescopic glide set for PROF/MAST 24" ranges and 30" wall ovens

901471 Telescopic glide set for PROF/MAST/HERT Series ranges 30-36-48"



901272 Porcelain Tray



901273 Glass Tray



CIG36 Cast Iron Griddle for PROF/MAST/HERT Series ranges



901438 Simmer Ring



901439 Wok Ring

9100138 High Altitude Kit

Specifications and features may vary. Please refer to the manufacturer's website for the latest updates.

ALL SERIES

ACCESSORY GUIDE

Range hood Category	Series	Size	Model #	Duct cover	Duct cover extension	Recirculation Kit	Charcoal Filter Kit	Air bracket for 2 in 1 ducting	Baffle Filters	Flow through Restrictor	Remote Control
Cabinet Mount Visor Hood	Professional & Master	24"	KTV24XV				901531 901532 (durable filter)				
		30"	KTV30XV				901531 901532 (durable filter)			Z130018	
Wall Mount	Professional & Master	24"	KCH24XV	Included			901488			Z130018	
		30"	KMC30x	Included			901531 901532 (durable filter)			901544 (300 CFM) 901530 (400 CFM)	
			KCH30XV	Included			901488			Z130018	
			KG30X	Included	901562	901271	901578		Included		
			KT30XT/ KT30CAT		901583 (up to 10 ft) XT		901497 901532 (durable filter)		901582		
		36"	KMC36x	Included			901531 901532 (durable filter)			901544 (300 CFM) 901530 (400 CFM)	
			KCH36XV	Included			901488			Z130018	
			KG36X	Included	901562	901271	901578		Included		
			KT36XT/ KT36CAT	Included	901583 (up to 10')	-	901531 901532 (durable filter)		901582		
			KPH36XT	Included			901612		Included		
			KPH362XT	Included					Included		
		48"	KMC48x	Included			901531 901532 (durable filter)			901544 (300 CFM) 901530 (400 CFM)	
			KG48X	Included	901562	901271	901578		Included		
			KT48XT/ KT48CAT	Included	901583 (up to 10')		901531 901532 (durable filter)		901582		
			KPH48XT	Included			901612		Included		
			KPH482XT	Included					Included		
		Heritage	36" K36HERTX	Included with Canopy			901515		Included	Z130018	
			48" K48HERTX	Included with Canopy			901516		Included	Z130018	
Island	Professional & Master	36"	KTI36XT	Included	901585 (up to 10')		901531 901532 (durable filter)		901581		
		42"	KTI42XT	Included	901585 (up to 10')		901531 901532 (durable filter)		901581		
		48"	KTI48XT	Included	901585 (up to 10')		901531 901532 (durable filter)		901581		
Undermount Wall Mount	Professional & Master	24"	KU24PRO1XV	Not Included	901281(standard) 901262 (narrow up to 10')	901396	901430		901365	Z130018	
			KU24PRO1X/14	Not Included	901281(standard) 901262 (narrow up to 10')				901365	Z130018	
		30"	KU30PRO1XV	Not Included	901281(standard) 901262 (narrow up to 10') 901263 (medium) 901266 (full width)	901335	901430		901366	Z130018	
			KU30PRO1X/14	Not Included	901281(standard) 901262 (narrow up to 10') 901263 (medium) 901266 (full width)	-	901394		901366	Z130018	
		36"	KU36PRO1XV	Not Included	901281(standard) 901262 (narrow up to 10') 901263 (medium) 901265 (full width)	901336	901430		901365	Z130018	
			KU36PRO1X/14	Not Included	901281(standard) 901262 (narrow up to 10') 901263 (medium) 901265 (full width)		901394		901365	Z130018	
			KU36PRO2X/14	Not Included	901263 (medium) 901265 (full width)		901394*	901264	Included		
		48"	KU48PRO1X/14	Not Included	901281(standard) 901262 (narrow up to 10') 901263 (medium) 901261 (full width)		901394		901365	Z130018	
			KU48PRO2X14	Not Included	901263 (medium) 901261 (full width)		901394*	901264	Included		
Inserts	ALL	30"	KIN30XV				901531 901532 (durable filter)				901575
		36"	KIN36XV				901531 901532 (durable filter)				901575
		30"	KIN30XT				901531 901532 (durable filter)	Included	Included		Included
		36"	KIN36XT				901531 901532 (durable filter)	Included	Included		Included
		48"	KIN48XT				901531 901532 (durable filter)	Included	Included		Included

*2 charcoal filter kits required for 2 motor models

Specifications and features may vary. Please refer to the manufacturer's website for the latest updates.

ALL SERIES

COLORS

COLOR FINISH		SERIES
STAINLESS STEEL		All Series
NERO	Glossy Black	Professional
BIANCO	Glossy White	Professional
ROSSO	Glossy Red	Professional
GIALLO	Glossy Yellow	Professional
ARANCIO	Glossy Orange	Professional
BIANCO OPACO	Matt White	Master
NERO OPACO	Matt Black	Master & Heritage
AVORIO	Matt Ivory	Heritage
CARBONIO	Carbon	Professional



Stainless Steel



Stainless Steel



Stainless Steel



Arancio



Avorio



Bianco



Rosso



Carbonio



Nero



Nero



Giallo

Specifications and features may vary. Please refer to the manufacturer's website for the latest updates.

[illegible]

800 361-0799

[illegible]

800 361-0799

PRODUCT GUIDE 2025



T 800 361 0799 F 450 682 7943

www.distinctive-online.com info@distinctive-online.com

EASTERN CANADA

HEAD OFFICE & WAREHOUSE
2025 Cunard Street
Laval, QC H7S 2N1

WESTERN CANADA

WAREHOUSE
NFI 1020 Derwent Way
Delta, BC V3M 5R1

SERVICE

service@distinctive-online.com

ORDER DESK

orderdesk@distinctive-online.com