



ZEPHYR

PRODUCT GUIDE 2024

VENTILATION

WHY BUY ZEPHYR VENTILATION?

OVERVIEW

- 1 Leader in Technology and Innovation
- 2 Highest Quality
- 3 Quietest Hoods in the Industry
- 4 Duct Cover Extension Option up to 12' Ceilings
- 5 Quick-Lock Installation System for Island models – the easiest in the industry
- 6 Versatile Outdoor Options

1. TECHNOLOGY AND INNOVATION

ZEPHYR CONNECT:

An exclusive app that allows you to control the range hood remotely or by connecting to your smart devices such as Amazon Alexa or Google Home smart speaker for voice activation.

LUMILIGHT LED LIGHT BULBS:

25,000 hour lifetime; dimmable LED; natural 3,000k color output; 3 year warranty.

POWERWAVE™ BLOWER TECHNOLOGY:

Designed to deliver best-in-class performance with unparalleled quiet operation, inspired by 3-phase AC power. This system allows for a dual internal blower to achieve 1,300 CFM in certain models.

AIRFLOW CONTROL TECHNOLOGY™ (ACT™):

Allows for restricted CFM levels based on Make-Up Air requirements.

BLUETOOTH® TECHNOLOGY:

Stream your favourite playlists from various Bluetooth® devices. Currently available in the Roma Groove Wall hood.

2. HIGH QUALITY

Zephyr uses high quality stainless steel that is welded and polished so there are no sharp edges or seams.

3. QUIETEST HOODS IN THE INDUSTRY

Zephyr ventilation products can get as low as 0.5 sones—that's the same level of sound as a soft whisper. Or as low as 1 sone, same as a refrigerator hum.

4. DUCT COVER EXTENSION OPTION UP TO 12 FEET

All chimney wall and island range hoods can reach ceiling heights of up to 12' with the optional Duct Cover Extension.

5. QUICK-LOCK INSTALLATION SYSTEM

Install an island range hood in 3 easy steps—what used to take 3+ people, now only takes 2! It's the easiest island range hood installation system in the industry.

6. VERSATILE OUTDOOR OPTIONS

From inserts to wall models, Zephyr outdoor ventilation systems all share the same great features:

304 stainless steel; pro baffle filters; powerful blowers up to 1,200 CFM; large depth and range of widths to cover even the largest of grills.

COLLECTIONS

CORE
PRO
DESIGNER
BRISAS BY ZEPHYR

MODEL + INSTALL TYPE
PAGE
VENTILATION
UNDER-CABINET

Breeze I (AK11)		4
Breeze II (AK12)	BLACK SS	4
Cyclone (AK65)	BLACK SS	5
Gust (AK71)		7
Hurricane (AK25)		5
Pisa (ZPI)		6
Pyramid (ZPY)		6
Tempest I (AK70)		7
Tidal I (AK73)	ZEPHYR CONNECT	8
Typhoon (AK21)		5
Valina (ZVA)		6

WALL

Anzio (ZAN)	BLACK SS	11
Apex (DAP)		16
Cypress (AK78)	OUTDOOR	29
Horizon (DHZ)		18
Layers (DLA)		17
Lucé (ZLU)		14
Mesa (DME)		17
Milano (ZMI)	ZEPHYR CONNECT	15
Modena (ZMO)		14
Okeanito (COK)		18
Ombra (ZOM)	BLACK SS	10
Podestà (ZPO)		13
Ravenna (ZRV)	BLACK SS	11
Roma (ZRO)		11
Roma Groove (ZRG)	BLUETOOTH	12
Roma Pro (ZRP)	POWERWAVE™	13
Savona (ZSA)	BLACK SS	10
Siena (ZSI)		12
Siena ES (ZSI)	ENERGY STAR	12
Siena Pro (ZSP)		12
Tempest II (AK75)		9
Tidal II (AK74)	ZEPHYR CONNECT	8
Titan (AK76)	POWERWAVE™	13
Venezia (ZVE)	ZEPHYR CONNECT	15
Verona (ZVO)		14
Vista (DVS)		16

ISLAND / IN-CEILING

Anzio (ZAZ)		19
Lucé (ZLC)		20
Lux Connect (ALU)	ZEPHYR CONNECT	23
Milano (ZML)	ZEPHYR CONNECT	21
Modena (ZMD)		20

MODEL + INSTALL TYPE
PAGE
VENTILATION cont.
ISLAND

Napoli (ZNA)	ZEPHYR CONNECT	21
Ravenna (ZRE)	BLACK SS	19
Roma (ZRM)		19
Siena Pro (ZSL)		22
Titan (AK77)	POWERWAVE™	22
Trapeze (CTP)		22
Verona (ZVN)		20
Vista (DVL)		21

DOWNDRAFT

Lift (DLI)	24
Sorrento (DD1)	24

INSERT

Monsoon (AK94)	ZEPHYR CONNECT	28
Monsoon I (AK92)		28
Monsoon II (AK93)		28
Monsoon Mini (AK91)		27
Monsoon Mini II (AK95)		27
Spruce (AK98)	OUTDOOR	29
Tornado Glo (AK85)		26
Tornado I (AK81)		25
Tornado II (AK82)		26
Tornado III (AK83)		26
Tornado Mini (AK84)		25
Tornado Mini ES (AK84)	ENERGY STAR	25
Twister (AK80)		25
Vortex (AK90)		27

MICROWAVE DRAWER
30
BRISAS BY ZEPHYR - VENTILATION
31
BRISAS BY ZEPHYR - REFRIGERATION

Beverage Coolers	32
Wine Coolers	32

MISCELLANEOUS

Accessories	33
ZEPHYR WARRANTY	34
BRISAS REFRIGERATION WARRANTY	35

UNDER-CABINET

CORE COLLECTION



BREEZE I

MODEL

FINISH

SIZE W x D

BREEZE I 250 CFM Range Hood w/ Slide Controls, Recirculating Option, and LED Lighting		
AK1124BW	W	24" x 20-3/32"
AK1124BS	S	24" x 20-3/32"
AK1100BB	B	30" x 20-3/32"
AK1100BW	W	30" x 20-3/32"
AK1100BS	S	30" x 20-3/32"
AK1136BB	B	36" x 20-3/32"
AK1136BW	W	36" x 20-3/32"
AK1136BS	S	36" x 20-3/32"

- Max. Blower CFM: 250
- 5-1/2" body height
- 3-speed mechanical slide controls
- 3-1/4"x10" vertical ducting
- 3-1/4"x10" horizontal ducting
- Extra-wide aluminum mesh filters
- 6W LumiLight LED lights
- Dual-level lighting

Accessories

0AK11-21001	Recirculating Kit (w/ charcoal filter)
0AK11-20001	Charcoal Filter Replacement (2 per kit)

CORE COLLECTION



BREEZE II

BREEZE II 400 CFM Range Hood w/ Electronic Controls and LED Lighting		
AK1200CB	B	30" x 20"
AK1200CW	W	30" x 20"
AK1200CS	S	30" x 20"
AK1200CBS	Blk SS	30" x 20"
AK1236CB	B	36" x 20"
AK1236CW	W	36" x 20"
AK1236CS	S	36" x 20"
AK1236CBS	Blk SS	36" x 20"

- Max. Blower CFM: 400
- 5-1/2" body height
- Auto delay-off
- 7" or 3-1/4"x10" vertical ducting
- 3-1/4"x10" horizontal ducting
- 3-speed electronic controls
- 6W LumiLight LED lights
- Dual-level lighting
- Extra-wide aluminum mesh filters

Accessories

ZRC-0012	Recirculating Kit (w/ charcoal filter)
0AK11-20001	Charcoal Filter Replacement (2 per kit)
MUA006A	Make-Up Air Kit

Finish: (B)-Black (W)-White (S)-Stainless Steel (Blk SS)-Black Stainless Steel
Warranty: 3 years non-consumable parts, 1 year labor

UNDER-CABINET

CORE COLLECTION



CYCLONE

MODEL

FINISH

SIZE W x D

CYCLONE 600 CFM Self-Cleaning Hood w/ Slide Controls and LED Lighting

AK6500CB	B	30" x 22-1/4"
AK6500CW	W	30" x 22-1/4"
AK6500CS	S	30" x 22-1/4"
AK6500CBS	Blk SS	30" x 22-1/4"
AK6536CB	B	36" x 22-1/4"
AK6536CW	W	36" x 22-1/4"
AK6536CS	S	36" x 22-1/4"
AK6536CBS	Blk SS	36" x 22-1/4"
AK6542CS	S	42" x 22-1/4"

- Max. Blower CFM: 600
- 6-3/8" body height
- 3-speed mechanical slide controls
- 6" or 3-1/4"x10" vertical ducting
- 3-1/4"x10" horizontal ducting
- Self cleaning
- 6W LumiLight LED lights
- Dual-level lighting

Accessories

MUA006A	Make-Up Air Kit
---------	-----------------

CORE COLLECTION



HURRICANE

ACT™

HURRICANE 695 CFM Self-Cleaning Hood w/ Airflow Control Technology (ACT™) and LED Lighting

AK2500CB	B	30" x 22-1/8"
AK2500CW	W	30" x 22-1/8"
AK2500CS	S	30" x 22-1/8"
AK2536CB	B	36" x 22-1/8"
AK2536CW	W	36" x 22-1/8"
AK2536CS	S	36" x 22-1/8"

- Max. Blower CFM: 695
- ACT Max. Blower CFM: 390, 290
- 7" body height
- Self cleaning
- 7" or 3-1/4"x10" vertical ducting
- 3-1/4"x10" horizontal ducting
- 3-speed electronic touch controls
- 6W LumiLight LED lights
- Dual-level lighting
- Auto delay-off

Accessories

MUA008A	Make-Up Air Kit
---------	-----------------

CORE COLLECTION



TYPHOON

ACT™

TYPHOON 850 CFM Self-Cleaning Hood with LED Lighting and ACT™

AK2100CB	B	30" x 20-3/4"
AK2100CW	W	30" x 20-3/4"
AK2100CS	S	30" x 20-3/4"
AK2136CB	B	36" x 20-3/4"
AK2136CW	W	36" x 20-3/4"
AK2136CS	S	36" x 20-3/4"
AK2142CS	S	42" x 20-3/4"
AK2148CS	S	48" x 20-3/4"

- Max. Blower CFM: 850
- ACT Max. Blower CFM: 390, 290
- 7-7/8" body height
- Self cleaning
- 7" or 3-1/4"x10" vertical ducting
- 3-1/4"x10" horizontal ducting
- 6-speed capacitive touch controls
- 6W LumiLight LED lights
- Tri-level lighting
- Auto delay-off

Accessories

MUA008A	Make-Up Air Kit
---------	-----------------

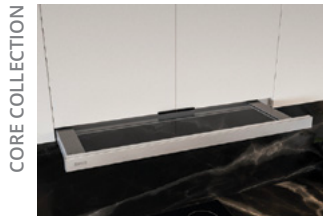
Finish: (B)-Black (W)-White (S)-Stainless Steel (Blk SS)-Black Stainless Steel
Warranty: 10 years non-consumable parts, 1 year labor

UNDER-CABINET



PYRAMID

MODEL	FINISH	SIZE W x D
PYRAMID 400 CFM Pyramid-Shaped Hood w/ Perimeter Aspiration System and LED Lighting		
ZPY-E30BS	S	30" x 21"
ZPY-E36BS	S	36" x 21"
PYRAMID 290 CFM Pyramid-Shaped Hood w/ Perimeter Aspiration System and LED Lighting		
ZPY-E30BS290	S	30" x 21"
<ul style="list-style-type: none"> • Max. Blower CFM: 400 or 290 • 7-3/8" body height • 3-speed mechanical slide controls • Perimeter aspiration system • 7" or 3-1/4"x10" vertical ducting • 3-1/4"x10" horizontal ducting • 6W LumiLight LED lights • Dual-level lighting • Aluminum mesh filters 		
Accessoires		
ZRC-00PY	Recirculating Kit (w/ charcoal filters)	
ZOF-C009	Charcoal Filter Replacement	
MUA006A	Make-Up Air Kit	



PISA

PISA 500 CFM Designer Hood w/ Sliding Glass and LED Lighting		
ZPI-E24BG	S* w/ Glass	24" x 18-3/4"
ZPI-E24BW	W* w/ Glass	24" x 18-3/4"
ZPI-E30BG	S* w/ Glass	30" x 18-3/4"
ZPI-E30BW	W* w/ Glass	30" x 18-3/4"
ZPI-E36BG	S* w/ Glass	36" x 18-3/4"
PISA 290 CFM Designer Hood w/ Sliding Glass and LED Lighting		
ZPI-E24BG290	S* w/ Glass	24" x 18-3/4"
ZPI-E24BW290	W* w/ Glass	24" x 18-3/4"
ZPI-E30BG290	S* w/ Glass	30" x 18-3/4"
ZPI-E30BW290	W* w/ Glass	30" x 18-3/4"
ZPI-E36BG290	S* w/ Glass	36" x 18-3/4"
<ul style="list-style-type: none"> • Max. Blower CFM: 500 or 290 • 1-1/2" body height** • Sliding glass canopy • 6" round vertical ducting • 6" round horizontal ducting • 3-speed mechanical slide controls • 6W LumiLight LED lights • Dual-level lighting • Aluminum mesh filters 		
Accessoires		
ZRC-00PI	Recirculating Kit (w/ charcoal filters)	
ZOF-C0PI	Charcoal Filter Replacement	
MUA006A	Make-Up Air Kit	

* Refers to handle color. Body is painted gray.

** A 9-9/16" blower housing is installed in the upper cabinet.



VALINA

VALINA 290 CFM Slide Out Canopy Hood		
ZVA-E30AS290	S*	30" x 17-7/8"
ZVA-M90AS290	S*	35-3/8" x 17-7/8"
<ul style="list-style-type: none"> • Max. Blower CFM: 290 • 1-1/2" body height** • 6" round vertical ducting • 2-speed mechanical push button controls • 5W LED lights • Aluminum mesh filters 		
Accessoires		
ZRC-00VA	Recirculating Kit (w/ charcoal filters)	
ZOF-C011	Charcoal Filter Replacement (2 per kit)	

* Refers to handle color. Body is painted gray.

** A 9" blower housing is installed in the upper cabinet.

Finish: (W)-White (S)-Stainless Steel
Warranty: 3 years non-consumable parts, 1 year labor

UNDER-CABINET

CORE COLLECTION



GUST

MODEL FINISH SIZE W x D

GUST 400 CFM 7-3/8in Tall Euro-Pro Hood w/ Baffle Filters and LED Lighting

AK7100BS-BF	S	30" x 21"
AK7136BS-BF	S	36" x 21"

GUST 290 CFM 7-3/8in Tall Euro-Pro Hood w/ Baffle Filters and LED Lighting

AK7100BS290-BF	S	30" x 21"
AK7136BS290-BF	S	36" x 21"

- Max. Blower CFM: 400 or 290
- 7-3/8" body height
- 3-speed mechanical slide controls
- 7" or 3-1/4"x10" vertical ducting
- 3-1/4"x10" horizontal ducting
- Baffle filters
- 6W LumiLight LED lights
- Dual-level lighting

Accessories

ZRC-0071	Recirculating Kit (w/ charcoal filters)
Z0F-C005	Charcoal Filter Replacement
MUA006A	Make-Up Air Kit

PRO COLLECTION



TEMPEST I
ACT™

TEMPEST I 650 CFM 11in Tall Pro-Style Hood w/ LED Lighting and ACT™

AK7000CS	S	30" x 22-1/2"
AK7036CS	S	36" x 22-1/2"
AK7042CS	S	42" x 22-1/2"
AK7048CS	S	48" x 22-1/2"

- Max. Blower CFM: 650 (included)
- Max. Blower CFM: 1,200 (optional)
- ACT Max. Blower CFM: 390, 290
- 11" body height
- Auto delay-off
- 8" or 10" round vertical ducting
- 8" or 3-1/4"x10" horizontal ducting
- 6-speed electronic touch controls
- CleanAir function
- 6W LumiLight LED lights
- Dual-level lighting
- Pro baffle filters
- Wireless remote option

Accessories and Blowers

AK0720	12" Duct Cover (For AK7000CS)
AK0726	12" Duct Cover (For AK7036CS)
AK0722	12" Duct Cover (For AK7042CS)
AK0728	12" Duct Cover (For AK7048CS)
AK1720	24" Duct Cover (For AK7000CS)
AK1726	24" Duct Cover (For AK7036CS)
AK1722	24" Duct Cover (For AK7042CS)
AK1728	24" Duct Cover (For AK7048CS)
ZRC-7000C*	Recirculating Kit (For AK7000CS, w/ charcoal filters)
ZRC-7036C*	Recirculating Kit (For AK7036CS, w/ charcoal filters)
ZRC-7042C*	Recirculating Kit (For AK7042CS, w/ charcoal filters)
ZRC-7048C*	Recirculating Kit (For AK7048CS, w/ charcoal filters)
Z0F-C002	Charcoal Filter Replacement
PBD-1200A**	1,200 CFM Internal Blower Kit (10" round duct)
14000005	RF Wireless Remote Control
MUA008A	Make-Up Air Kit (650 CFM)
MUA010A	Make-Up Air Kit (1,200 CFM)

*ZRC-70xxC recirculating kits are compatible with 650-CFM internal blower only (blower included with hood). ZRC-70xxC includes a 4-inch tall return-air box, so please plan your installation accordingly.

**PBD-1200A is a dual internal blower kit with a single blower and two blower openings. To complete the kit you must remove the blower from the hood and install it into the PBD-1200A kit.

NOTE: PBD-1200A blower is only compatible with models AK7036CS, AK7042CS and AK7048CS.

Finish: (S)-Stainless Steel

Warranty: 3 years non-consumable parts, 1 year labor

UNDER-CABINET /
WALL

PRO COLLECTION



TIDAL I

ACT 



shown with recirculating kit

PRO COLLECTION



TIDAL II

ACT 

MODEL FINISH SIZE W x D

TIDAL I 700 CFM 11in Tall Pro-Style Hood w/ Zephyr Connect + PowerWave™ Blower

AK7300AS	S	30" x 22-1/2"
AK7336AS	S	36" x 22-1/2"

- Max. Blower CFM: 700 (included)
- Max. Blower CFM: 1,300 (optional)
- ACT Max. Blower CFM: 590, 390, 290
- 11" body height
- Zephyr Connect app compatible
- 8" or 10" round vertical ducting
- 8" or 3-1/4"x10" horizontal ducting
- 6-speed proximity controls
- CleanAir function
- 6W LumiLight LED lights
- Tri-level lighting
- Pro baffle filters
- Auto delay-off

Accessories and Blowers

PBD-1300B*	1,300 CFM Internal Blower Kit (10" round duct)
AK0720	12" Duct Cover (For AK7300AS)
AK0726	12" Duct Cover (For AK7336AS)
AK1720	24" Duct Cover (For AK7300AS)
AK1726	24" Duct Cover (For AK7336AS)
ZRC-7000C**	Recirculating Kit (For AK7300AS, w/ charcoal filters)
ZRC-7036C**	Recirculating Kit (For AK7336AS, w/ charcoal filters)
ZOF-C002	Charcoal Filter Replacement
14000005	RF Wireless Remote Control
MUA008A	Make-Up Air Kit (700 CFM)
MUA010A	Make-Up Air Kit (1,300 CFM)

TIDAL II 700 CFM 18in Tall Pro-Style Hood w/ Zephyr Connect + PowerWave™ Blower

AK7400AS	S	30" x 24"
AK7436AS	S	36" x 24"
AK7448AS	S	48" x 24"

- Max. Blower CFM: 700 (included)
- Max. Blower CFM: 1,300 (optional)
- ACT Max. Blower CFM: 590, 390, 290
- Zephyr Connect app compatible
- 8" or 10" round vertical ducting
- 8", 10" or 3-1/4"x10" horizontal ducting
- 6-speed proximity controls
- CleanAir function
- 6W LumiLight LED lights
- Tri-level lighting
- Pro baffle filters
- Auto delay-off

Accessories and Blowers

PBD-1300B*	1,300 CFM Internal Blower Kit (10" round duct)
AK0720	12" Duct Cover (For AK7400AS)
AK0726	12" Duct Cover (For AK7436AS)
AK0728	12" Duct Cover (For AK7448AS)
AK1720	24" Duct Cover (For AK7400AS)
AK1726	24" Duct Cover (For AK7436AS)
AK1728	24" Duct Cover (For AK7448AS)
ZRC-7000C**	Recirculating Kit (For AK7400AS, w/ charcoal filters)
ZRC-7036C**	Recirculating Kit (For AK7436AS, w/ charcoal filters)
ZRC-7048C**	Recirculating Kit (For AK7448AS, w/ charcoal filters)
ZOF-C002	Charcoal Filter Replacement
14000005	RF Wireless Remote Control
MUA008A	Make-Up Air Kit (700 CFM)
MUA010A	Make-Up Air Kit (1,300 CFM)

*PBD-1300B is a dual internal blower kit with a single blower and two blower openings. To complete the kit you must remove the blower from the hood and install it into the PBD-1300B kit.

NOTE: PBD-1300B blower is not compatible with the AK7300AS model.

**ZRC-70xxC recirculating kits are compatible with 700-CFM internal blower only (blower included with hood). ZRC-70xxC includes a 4-inch tall return-air box, so please plan your installation accordingly.

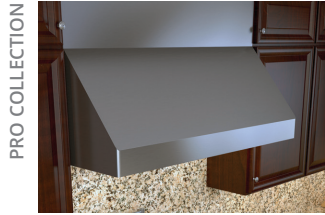


DID YOU KNOW Zephyr Connect is an exclusive app that allows you to control the range hood remotely from anywhere with an easy-to-use interface and enhanced product features. Change the fan speed, set the delay-off, turn lights on/off, and more. Connect to your smart devices such as Amazon Alexa or Google Home smart speakers for voice activation and hands free operation. Available on the App Store or Google Play.

Finish: (S)-Stainless Steel

Warranty: 3 years non-consumable parts, 1 year labor

WALL



PRO COLLECTION

TEMPEST II
ACT™

MODEL FINISH SIZE W x D

TEMPEST II 650 CFM 18in Tall Pro-Style Hood w/ LED Lighting and ACT™

AK7500CS	S	30" x 24"
AK7536CS	S	36" x 24"
AK7542CS	S	42" x 24"
AK7548CS	S	48" x 24"
AK7554CS	S	54" x 24"

- Max. Blower CFM: 650 (included)
- Max. Blower CFM: 1,200 (optional)
- ACT Max. Blower CFM: 390, 290
- Wireless remote option
- 8" or 10" round vertical ducting
- 8", 10" or 3-1/4"x10" horizontal ducting
- 6-speed electronic touch controls
- CleanAir function
- 6W LumiLight LED lights
- Dual-level lighting
- Pro baffle filters
- Auto delay-off

Accessories and Blowers

AK0720	12" Duct Cover (For AK7500CS)
AK0726	12" Duct Cover (For AK7536CS)
AK0722	12" Duct Cover (For AK7542CS)
AK0728	12" Duct Cover (For AK7548CS)
AK0724	12" Duct Cover (For AK7554CS)
AK1720	24" Duct Cover (For AK7500CS)
AK1726	24" Duct Cover (For AK7536CS)
AK1722	24" Duct Cover (For AK7542CS)
AK1728	24" Duct Cover (For AK7548CS)
AK1724	24" Duct Cover (For AK7554CS)
ZRC-7000C*	Recirculating Kit (For AK7500CS, w/ charcoal filters)
ZRC-7036C*	Recirculating Kit (For AK7536CS, w/ charcoal filters)
ZRC-7042C*	Recirculating Kit (For AK7542CS, w/ charcoal filters)
ZRC-7048C*	Recirculating Kit (For AK7548CS, w/ charcoal filters)
Z0F-C002	Charcoal Filter Replacement
PBD-1200A**	1,200 CFM Internal Blower Kit (10" round duct)
14000005	RF Wireless Remote Control
MUA008A	Make-Up Air Kit (650 CFM)
MUA010A	Make-Up Air Kit (1,200 CFM)

*ZRC-70xxC recirculating kits are compatible with 650-CFM internal blower only (blower included with hood). ZRC-70xxC includes a 4-inch tall return-air box, so please plan your installation accordingly.

**PBD-1200A is a dual internal blower kit with a single blower and two blower openings. To complete the kit you must remove the blower from the hood and install it into the PBD-1200A kit.

Finish: (S)-Stainless Steel
Warranty: 3 years non-consumable parts, 1 year labor

WALL

CORE COLLECTION



OMBRA
ACT™

CORE COLLECTION



SAVONA
ACT™

MODEL

FINISH

SIZE W x D

OMBRA 600 CFM Traditional Wall Hood w/ Airflow Control Technology (ACT™) and LED Lighting

ZOM-E30BS	S	30" x 19-3/4"
ZOM-E30BBS	Blk SS	30" x 19-3/4"
ZOM-E36BS	S	36" x 19-3/4"
ZOM-E36BBS	Blk SS	36" x 19-3/4"

- Max. Blower CFM: 600
- ACT Max. Blower CFM: 390, 290
- Auto delay-off
- 4-speed capacitive touch controls
- 6" round vertical ducting
- Accommodates 9'4" ceiling height
- 6W LumiLight LED lights
- Dual-level lighting
- Aluminum mesh filters

Accessories

ZRC-01OM	Recirculating Kit (w/ charcoal filters)
ZOF-C091	Charcoal Filter Replacement
Z1C-01OMS	Stainless Steel Duct Cover Extension (For up to a 12' ceiling)
Z1C-01OMBS	Black SS Duct Cover Extension (For up to a 12' ceiling)
MUA006A	Make-Up Air Kit
ZOF-B002	Hybrid Baffle Filter Kit (2 filters)

SAVONA 600 CFM Classic Curved Body Wall Hood w/ ACT™ & LED lights

ZSA-E30FB	B	30" x 19-1/2"
ZSA-E30FW	W	30" x 19-1/2"
ZSA-E30FS	S	30" x 19-1/2"
ZSA-E30FBS	Blk SS	30" x 19-1/2"
ZSA-M90FB	B	35-7/16" x 19-1/2"
ZSA-M90FW	W	35-7/16" x 19-1/2"
ZSA-M90FS	S	35-7/16" x 19-1/2"
ZSA-M90FBS	Blk SS	35-7/16" x 19-1/2"

- Max. Blower CFM: 600
- ACT Max. Blower CFM: 390, 290
- Auto delay-off
- 5-speed ICON Touch® controls
- 6" round vertical ducting
- Accommodates 9'7" ceiling height
- 6W LumiLight LED lights
- Dual-level lighting
- Aluminum mesh filters

Accessories

ZRC-00SV	Recirculating Kit (w/ charcoal filters)
ZOF-C002	Charcoal Filter Replacement
Z1C-01SAB	Duct Cover Extension, B (For up to a 12' ceiling)
Z1C-01SAW	Duct Cover Extension, W (For up to a 12' ceiling)
Z1C-01SA	Duct Cover Extension, S (For up to a 12' ceiling)
Z1C-01SABS	Duct Cover Extension, Blk SS (For up to a 12' ceiling)
MUA006A	Make-Up Air Kit
ZOF-B001	Baffle Filter Kit (2 filters)
RC-0002	Wireless RF Remote Control Kit

DID YOU KNOW Zephyr has a comprehensive hood height calculator online to determine if our chimney range hoods will fit in your kitchen. zephyronline.com/customer-care/range-hood-height-calculator

Finish: (S)-Stainless Steel (Blk SS)-Black Stainless Steel (B)-Black (W)-White
Warranty: 3 years non-consumable parts, 1 year labor

WALL

CORE COLLECTION



ANZIO
ACT™

MODEL

FINISH

SIZE W x D

ANZIO 600 CFM Low-Profile Modern Wall Hood w/ ACT™ & LED lights

ZAN-E24DS	S	24" x 22"
ZAN-E30DS	S	30" x 22"
ZAN-E30DBS	Blk SS	30" x 22"
ZAN-M90DS	S	35-7/16" x 22"
ZAN-M90DBS	Blk SS	35-7/16" x 22"

- Max. Blower CFM: 600
- ACT Max. Blower CFM: 390, 290
- Auto delay-off
- 5-speed ICON Touch® controls
- 6" round vertical ducting
- Accommodates 9'10" ceiling height
- 6W LumiLight LED lights
- Dual-level lighting
- Aluminum mesh filters

Accessories

ZRC-01AN	Recirculating Kit (w/ charcoal filters)
ZOF-C091	Charcoal Filter Replacement
Z1C-00AN	Duct Cover Extension (For up to a 12' ceiling)
Z1C-00ANBS	Duct Cover Extension, Blk SS (For up to a 12' ceiling)
MUA006A	Make-Up Air Kit
ZOF-B002	Hybrid Baffle Filter Kit (2 filters)
RC-0002	Wireless RF Remote Control Kit

CORE COLLECTION



RAVENNA
ACT™

RAVENNA 600 CFM Curved Glass Wall Hood w/ ACT™ & LED lights

ZRV-E30CGC	S w/ Clear Glass	30" x 19-3/4"
ZRV-E30CBSGG	Blk SS w/ Smoke Gray Glass	30" x 19-3/4"
ZRV-M90CGC	S w/ Clear Glass	35-3/16" x 19-3/4"
ZRV-M90CBSGG	Blk SS w/ Smoke Gray Glass	35-3/16" x 19-3/4"

- Max. Blower CFM: 600
- ACT Max. Blower CFM: 390, 290
- Auto delay-off
- 5-speed ICON Touch® controls
- 6" round vertical ducting
- Accommodates 9'4" ceiling height
- 6W LumiLight LED lights
- Dual-level lighting
- Aluminum mesh filters

Accessories

ZRC-00RV	Recirculating Kit (w/ charcoal filters)
ZOF-C002	Charcoal Filter Replacement
Z1C-00RV	Duct Cover Extension (For up to a 12' ceiling)
Z1C-00RVBS	Duct Cover Extension, Blk SS (For up to a 12' ceiling)
MUA006A	Make-Up Air Kit
RC-0002	Wireless RF Remote Control Kit

CORE COLLECTION



ROMA
ACT™

ROMA 600 CFM Contemporary Hood w/ ACT™ & LED lights Compression System® & ACT™

ZRO-E30FS	S	30" x 22"
ZRO-M90FS	S	35-7/16" x 22"

- Max. Blower CFM: 600
- ACT Max. Blower CFM: 390, 290
- Auto delay-off
- 5-speed ICON Touch® controls
- 6" round vertical ducting
- Accommodates 9'9" ceiling height
- 6W LumiLight LED lights
- Dual-level lighting
- Aluminum mesh filters

Accessories

ZRC-01RO	Recirculating Kit (2 charcoal filters)
ZOF-C002	Charcoal Filter Replacement
Z1C-00RO	Duct Cover Extension (For up to a 12' ceiling)
MUA006A	Make-Up Air Kit
RC-0002	Wireless RF Remote Control Kit

Finish: (S)-Stainless Steel (Blk SS)-Black Stainless Steel
Warranty: 3 years non-consumable parts, 1 year labor

WALL

CORE COLLECTION



ROMA GROOVE

Bluetooth ACT™

MODEL FINISH SIZE W x D

ROMA GROOVE 600 CFM Contemporary Hood w/ Bluetooth® Speakers, ACT™ & LED lights

ZRG-E30BS	S	30" x 22"
ZRG-M90BS	S	35 1/2" x 22"

- Max. Blower CFM: 600
- ACT Max. Blower CFM: 390, 290
- Baffle filters
- 2 built-in Bluetooth® stereo speakers
- 5-speed ICON Touch® controls
- 6" round vertical ducting
- Accommodates 10' ceiling height
- 6W LumiLight LED lights
- Dual-level lighting
- Auto delay-off

Accessories

ZRC-00RG	Recirculating Kit (2 charcoal filters)
Z0F-C005	Charcoal Filter Replacement
Z1C-00RO	Duct Cover Extension (For up to a 12' ceiling)
MUA006A	Make-Up Air Kit
RC-0002	Wireless RF Remote Control Kit

DID YOU KNOW The Zephyr Roma Groove is compatible with various Bluetooth® devices such as mobile phones and tablets. Roma Groove allows you to play your music through two built-in stereo speakers, freeing up counter space so you can enjoy your favorite music while entertaining or prepping your evening's dinner.

CORE COLLECTION



SIENA

ACT™

SIENA 650 CFM Traditional Wall Hood w/ Hybrid Baffle Filters, ACT™ & LED Lights

ZSI-E30CS	S	30" x 22"
ZSI-E36CS	S	36" x 22"

- Max. Blower CFM: 650
- ACT Max. Blower CFM: 390, 290
- Hybrid baffle filters
- Accommodates 9'4" ceiling height
- 5-speed ICON Touch® controls
- 8" round vertical ducting
- 8" or 3-1/4"x10" horizontal ducting
- 6W LumiLight LED lights
- Dual-level lighting
- Auto delay-off

Accessories

ZRC-00SI	Recirculating Kit (w/ charcoal filters)
Z0F-C091	Charcoal Filter Replacement
Z1C-00SI	Duct Cover Extension (For up to a 12' ceiling)
MUA008A	Make-Up Air Kit
RC-0002	Wireless RF Remote Control Kit

CORE COLLECTION



SIENA ES

ACT™

SIENA ES 400 CFM ENERGY STAR Traditional Wall Hood w/ Hybrid Baffle Filters & ACT™

ZSI-E30BS-ES	S	30" x 22"
ZSI-E36BS-ES	S	36" x 22"

- Max. Blower CFM: 400
- ACT Max. Blower CFM: 290
- ENERGY STAR® certified
- 5-speed ICON Touch® controls
- 8" round vertical or horizontal ducting
- Accommodates 9'4" ceiling height
- 7W LumiLight LED lights
- Hybrid baffle filters
- Auto delay-off

Accessories

Z1C-00SI	Duct Cover Extension, (For up to a 12' ceiling)
----------	---

CORE COLLECTION



SIENA PRO WALL

ACT™

SIENA PRO 1,200 CFM Pro Wall Hood w/ Hybrid Baffle Filters, ACT™ & LED Lights

ZSP-E36CS	S	36" x 22"
ZSP-E42CS	S	42" x 22"
ZSP-E48CS	S	48" x 22"

- Max. Blower CFM: 1,200
- ACT Max. Blower CFM: 590, 390
- Auto delay-off
- 5-speed ICON Touch® controls
- 10" round vertical ducting
- Accommodates 9'4" ceiling height
- 6W LumiLight LED lights
- Dual-level lighting
- Hybrid baffle filters

Accessories

Z1C-00SP	Duct Cover Extension (For up to a 12' ceiling)
MUA010A	Make-Up Air Kit
RC-0002	Wireless RF Remote Control Kit

Finish: (S)-Stainless Steel

Warranty: 3 years non-consumable parts, 1 year labor

WALL



PODESTÀ WALL
ACT™

MODEL

FINISH

SIZE W x D

PODESTÀ 600 CFM Pro-Style Chimney Hood w/ LED Lights

ZPO-E30AS	S	30" x 24"
ZPO-E36AS	S	36" x 24"

- Max. Blower CFM: 600
- ACT Max. Blower CFM: 390, 290
- 3-speed electronic touch controls
- 6" round vertical ducting
- Dual-level lighting
- Accommodates 9'5" ceiling height
- 5W LED lights
- Hybrid baffle filters
- Auto delay-off

Accessories

Z1C-01PO	Duct Cover Extension (For a 9.5'-12' ceiling)
ZRC-00PO	Recirculating Kit (w/ charcoal filters)
Z0F-C011	Charcoal Filter Replacement (2 per kit)
14000010	RF Wireless Remote Control



TITAN
ACT™

TITAN 750 CFM Pro-Style Chimney Hood w/ Powerwave™ Blower, ACT™ & LED Lights

AK7636BS	S	36" x 24"
AK7642BS	S	42" x 24"
AK7648BS	S	48" x 24"
AK7654BS	S	54" x 24"
AK7660BS	S	60" x 24"

- Max. Blower CFM: 750 (included)
- Max. Blower CFM: 1,300 (optional)
- ACT Max. Blower CFM: 590, 390, 290
- Auto delay-off
- CleanAir function
- 8" or 10" round vertical & horizontal ducting
- Dual-level lighting
- Accommodates 9'6" ceiling height
- Directional lighting
- 6W LumiLight LED lights
- Pro baffle filters
- 6-speed LCD controls
- Wireless remote option

Accessories

PBD-1300B	1,300 CFM Internal Blower Kit (10" round duct)
Z1C-0076	Duct Cover Extension - 36", 42" (For a 10'-12' ceiling)
Z1C-0176	Duct Cover Extension - 48", 54", 60" (For a 10'-12' ceiling)
14000005	RF Wireless Remote Control
MUA008A	Make-Up Air Kit (750 CFM)
MUA010A	Make-Up Air Kit (1,300 CFM)



ROMA PRO
ACT™

ROMA PRO 750 CFM Pro-Style Chimney Hood w/ Powerwave™ Blower, ACT™ & LED Lights

ZRP-E36BS	S	36" x 24"
ZRP-E48BS	S	48" x 24"

- Max. Blower CFM: 750 (included)
- Max. Blower CFM: 1,300 (optional)
- ACT Max. Blower CFM: 590, 390, 290
- Auto delay-off
- CleanAir function
- 8" or 10" round vertical ducting
- Dual-level lighting
- Accommodates 10'3" ceiling height
- Directional lighting
- 6W LumiLight LED lights
- Pro baffle filters
- 6-speed LCD controls
- Wireless remote option

Accessories

PBD-1300B	1,300 CFM Internal Blower Kit (10" round duct)
Z1C-00RP	Duct Cover Extension (For a 10'-12' ceiling)
14000005	RF Wireless Remote Control
MUA008A	Make-Up Air Kit (750 CFM)
MUA010A	Make-Up Air Kit (1,300 CFM)

Finish: (S)-Stainless Steel
Warranty: 3 years non-consumable parts, 1 year labor

WALL

CORE COLLECTION



MODENA
ACT™

MODEL

FINISH

SIZE W x D

MODENA 600 CFM Thin Floating Glass Wall Hood w/ LED Lighting and ACT™

ZMO-E30BS	S w/ Glass	30" x 22-1/8"
ZMO-M90BS	S w/ Glass	35-7/16" x 22-1/8"

- Max. Blower CFM: 600
- ACT Max. Blower CFM: 390, 290
- Accommodates 10' ceiling height
- 5-speed ICON Touch® controls
- 8" round vertical ducting
- Auto delay-off
- 6W LumiLight LED lights
- Dual-level lighting
- Aluminum mesh filter

Accessories

ZRC-00MO	Recirculating Kit (w/ charcoal filter)
ZOF-C002	Charcoal Filter Replacement
Z1C-00MO	Duct Cover Extension (For up to a 12' ceiling)
MUA006A	Make-Up Air Kit

CORE COLLECTION



LUCÉ
ACT™

LUCÉ 600 CFM Wall Hood w/ LED Accent Lighting, ACT™ & LED Lights

ZLU-E30CS	S	30" x 22"
ZLU-M90CS	S	35-7/16" x 22"

- Max. Blower CFM: 600
- ACT Max. Blower CFM: 390, 290
- Auto delay-off
- Aluminum mesh filter
- 5-speed ICON Touch® controls
- 6" round vertical ducting
- Accommodates 10' ceiling height
- 6W LumiLight LED lights
- Dual-level lighting
- 3-color LED accent light

Accessories

ZRC-00LU	Recirculating Kit (w/ charcoal filter)
ZOF-C092	Charcoal Filter Replacement
Z1C-00LU	Duct Cover Extension (For up to a 12' ceiling)
MUA006A	Make-Up Air Kit
RC-0002	Wireless RF Remote Control Kit

Lucé illuminates in cloud white, deep blue and amber.

CORE COLLECTION



VERONA
ACT™

VERONA 600 CFM LED Illuminated Glass Wall Hood w/ LED Lighting and ACT™

ZVO-E30BG	S w/ Glass	30" x 22"
ZVO-M90BG	S w/ Glass	35-7/16" x 22"

- Max. Blower CFM: 600
- ACT Max. Blower CFM: 390, 290
- Accommodates 10' ceiling height
- Aluminum mesh filter
- 5-speed ICON Touch® controls
- 8" round vertical ducting
- Auto delay-off
- 6W LumiLight LED lights
- Dual-level lighting
- 3 color LED illuminated glass

Accessories

ZRC-00VO	Recirculating Kit (w/ charcoal filters)
ZOF-C002	Charcoal Filter Replacement
Z1C-00VO	Duct Cover Extension (For up to a 12' ceiling)
MUA006A	Make-Up Air Kit

Verona glass illuminates in cloud white, deep blue and amber.

DID YOU KNOW Lucé & Verona models have a "demo mode" that cycles through each of the three LED accent light colors every 10 seconds. To enable demo mode, hold down the "accent light" button on the bottom of the hood for 3 seconds.

Finish: (S)-Stainless Steel
Warranty: 3 years non-consumable parts, 1 year labor

WALL

CORE COLLECTION



VENEZIA

ACT™



MODEL FINISH SIZE W x D

VENEZIA 700 CFM Wall Hood w/ Zephyr Connect + PowerWave™ Blower, ACT & LED lights

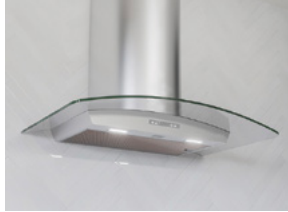
ZVE-E30DS	S	30" x 24"
ZVE-E36DS	S	36" x 24"
ZVE-E42DS	S	42" x 24"

- Max. Blower CFM: 700
- ACT Max. Blower CFM: 590, 390, 290
- Baffle filters
- CleanAir function
- 6-speed proximity controls
- 8" round vertical ducting
- Accommodates 9'6" ceiling height
- Zephyr Connect app compatible
- 6W LumiLight LED lights
- Tri-level lighting
- Auto delay-off

Accessories

ZRC-03VE	Recirculating Kit (w/ charcoal filters)
Z0F-C091	Charcoal Filter Replacement
Z1C-01VE	Duct Cover Extension (For up to a 12' ceiling)
14000005	RF Wireless Remote Control
MUA008A	Make-Up Air Kit

CORE COLLECTION



MILANO WALL

ACT™



MILANO 700 CFM Curved Canopy Wall Hood w/ Zephyr Connect, PowerWave™ Blower & ACT™

ZMI-M90CG	S w/ Glass	35-3/16" x 20-1/2"
ZMI-M90CS	S	35-3/16" x 20-1/2"

- Max. Blower CFM: 700
- ACT Max. Blower CFM: 590, 390, 290
- CleanAir function
- Zephyr Connect app compatible
- 6-speed proximity controls
- 8" round vertical ducting
- Accommodates 10' ceiling height
- Aluminum mesh filter
- 6W LumiLight LED lights
- Tri-level lighting
- Auto delay-off

Accessories

ZRC-00MI	Recirculating Kit (w/ charcoal filters)
Z0F-C002	Charcoal Filter Replacement
Z1C-01MI	Duct Cover Extension (For up to a 12' ceiling)
14000005	RF Wireless Remote Control
MUA008A	Make-Up Air Kit

DID YOU KNOW Zephyr LumiLight LED lights are covered under the same 3 year warranty as all internal parts. Zephyr is the first and only range hood manufacturer to warranty lights.

Finish: (S)-Stainless Steel

Warranty: 3 years non-consumable parts, 1 year labor

WALL

DESIGNER COLLECTION



APEX WALL

DESIGNER COLLECTION



VISTA WALL

MODEL

FINISH

SIZE W x D

APEX Vertical-Style Wall Hood w/ LED Lighting - BODY ONLY*

DAP-M90AMBX	Matte Blk Glass	35-3/8" x 19-13/16"
DAP-M90AMWX	Matte Wht Glass	35-3/8" x 19-13/16"

- Max. Blower CFM: 290-1,000 (not included)
- 3-speed capacitive touch controls
- CleanAir function
- 6" or 8" round vertical ducting
- 6" or 8" round horizontal ducting
- Wireless remote control option
- 5W LED lights
- Tri-level lighting
- Aluminum mesh filters

Accessories and Blowers

ZRC-00AP	Recirculating Kit (w/ charcoal filter)
ZOF-C010	Charcoal Filter Replacement (2 per kit)
Z1C-00MEMB	Duct Cover, Matte Blk (For up to 10'6" ceiling)
Z1C-00MESS	Duct Cover, SS (For up to 10'6" ceiling)
CBI-290C	290 CFM Internal Blower (6" round duct)
CBI-390A	390 CFM Internal Blower (6" round duct)
CBI-600A	600 CFM Internal Blower (6" round duct)
PBN-1000A	1,000 CFM In-line Blower (8" round duct**)
CBE-1000	1,000 CFM External Blower (8" round duct**)
14000010	RF Wireless Remote Control
MUA006A	Make-Up Air Kit (600 CFM)
MUA008A	Make-Up Air Kit (1,000 CFM)

*Requires purchase of Zephyr internal, external or in-line blower, sold separately.

**10" round duct connects to external or in-line blower. Must transition from 10" to 8" before duct passes through ceiling. 10" to 8" adapter included with in-line and external blowers.

VISTA Low-Profile Wall Hood w/ PAS Panel and LED Lighting - BODY ONLY*

DVS-E30ASSX	S	30" x 18-7/8"
DVS-E36ASSX	S	36" x 18-7/8"

- Max. Blower CFM: 290-1,000 (not included)
- 3-speed invisible touch controls
- Wireless remote control option
- Accommodates 9' ceiling height
- 6" or 8" round vertical ducting
- Perimeter aspiration system
- Aluminum mesh filters
- 2-1/8" body height
- 5W LED lights
- Tri-level lighting
- CleanAir function

Accessories and Blowers

ZRC-00VS	Recirculating Kit (w/ charcoal filter)
ZOF-C010	Charcoal Filter Replacement (2 per kit)
Z1C-00VS	Duct Cover Extension, SS (For up to 12' ceiling)
CBI-290C	290 CFM Internal Blower (6" round duct)
CBI-390A	390 CFM Internal Blower (6" round duct)
CBI-600A	600 CFM Internal Blower (6" round duct)
PBN-1000A	1,000 CFM In-line Blower (8" round duct**)
CBE-1000	1,000 CFM External Blower (8" round duct**)
14000010	RF Wireless Remote Control
MUA006A	Make-Up Air Kit (600 CFM)
MUA008A	Make-Up Air Kit (1,000 CFM)

*Requires purchase of Zephyr internal, external or in-line blower, sold separately.

**10" round duct connects to external or in-line blower. Must transition from 10" to 8" before duct passes through ceiling. 10" to 8" adapter included with in-line and external blowers.

Finish: (Matte Blk)-Matte Black (Matte Wht)-Matte White (S)-Stainless Steel
Warranty: 2 years non-consumable parts, 1 year labor

WALL



MESA WALL



LAYERS WALL

MODEL

FINISH

SIZE W x D

MESA European Pro-Style Hood w/ LED Lighting - BODY ONLY*

DME-M90AMBX	Matte Blk	35-5/16" x 19-11/16"
DME-M90ASSX	S	35-5/16" x 19-11/16"
DME-M90ASGX	Satin Gold	35-5/16" x 19-11/16"
DME-E48AMBX	Matte Blk	48" x 19-11/16"
DME-E48ASSX	S	48" x 19-11/16"
DME-E48ASGX	Satin Gold	48" x 19-11/16"

- Max. Blower CFM: 290-1,000 (not included)
- 3-speed invisible touch controls
- CleanAir function
- 6" or 8" round vertical ducting
- 6" or 8" round horizontal ducting
- Wireless remote control option
- 5W LED lights
- Tri-level lighting
- Hybrid baffle filters

Accessories and Blowers

ZRC-01ME	Recirculating Kit (w/ charcoal filter)
Z0F-C010	Charcoal Filter Replacement (2 per kit)
Z1C-00MEMB	Duct Cover, Matte Blk (For up to 10'6" ceiling)
Z1C-00MESS	Duct Cover, SS (For up to 10'6" ceiling)
Z1C-00MESG	Duct Cover, Satin Gold (For up to 10'6" ceiling)
MERAIL-00SS	Accent Rail, Stainless, 36"
MERAIL-00SG	Accent Rail, Satin Gold, 36"
MERAIL-01SS	Accent Rail, Stainless, 48"
MERAIL-01SG	Accent Rail, Satin Gold, 48"
CBI-290C	290 CFM Internal Blower (6" round duct)
CBI-390A	390 CFM Internal Blower (6" round duct)
CBI-600A	600 CFM Internal Blower (6" round duct)
PBI-1100B-DME**	1,100 CFM Internal Blower (10" round duct)
PBN-1000A	1,000 CFM In-line Blower (8" round duct***)
CBE-1000	1,000 CFM External Blower (8" round duct***)
14000010	RF Wireless Remote Control
MUA006A	Make-Up Air Kit (600 CFM)
MUA008A	Make-Up Air Kit (1,000 CFM)

*Requires purchase of Zephyr internal, external or in-line blower, sold separately.

**48" model only.

***10" round duct connects to external or in-line blower. Must transition from 10" to 8" before duct passes through ceiling. 10" to 8" adapter included with in-line and external blowers.

LAYERS Designer Wall Hood w/ PAS Panel and LED Lighting - BODY ONLY*

DLA-M90ASSX	S	36" x 22"
DLA-E42ASSX	S	42" x 22"

- Max. Blower CFM: 290-1,000 (not included)
- 3-speed invisible touch controls
- Wireless remote control option
- Accommodates 9'5" ceiling height
- 6" or 8" round vertical ducting
- Perimeter aspiration system
- Aluminum mesh filters
- 1-3/4" body height
- 5W LED lights
- Tri-level lighting
- CleanAir function

Accessories and Blowers

ZRC-00VS	Recirculating Kit (w/ charcoal filter)
Z0F-C010	Charcoal Filter Replacement (2 per kit)
Z1C-00VS	Duct Cover Extension, SS (For up to 12' ceiling)
CBI-290C	290 CFM Internal Blower (6" round duct)
CBI-390A	390 CFM Internal Blower (6" round duct)
CBI-600A	600 CFM Internal Blower (6" round duct)
PBN-1000A	1,000 CFM In-line Blower (8" round duct**)
CBE-1000	1,000 CFM External Blower (8" round duct**)
14000010	RF Wireless Remote Control
MUA006A	Make-Up Air Kit (600 CFM)
MUA008A	Make-Up Air Kit (1,000 CFM)

*Requires purchase of Zephyr internal, external or in-line blower, sold separately.

**10" round duct connects to external or in-line blower. Must transition from 10" to 8" before duct passes through ceiling. 10" to 8" adapter included with in-line and external blowers.

Finish: (Matte Blk)-Matte Black (S)-Stainless Steel

Warranty: 2 years non-consumable parts, 1 year labor

WALL

DESIGNER COLLECTION



HORIZON WALL

MODEL

FINISH

SIZE W x D

HORIZON Designer Wall Hood w/ LED Lighting - BODY ONLY*

DHZ-M90AMBX	Matte Blk Glass	35-3/8" x 20-1/8"
DHZ-M90AMWX	Matte Wht Glass	35-3/8" x 20-1/8"

- Max. Blower CFM: 290-1,000 (not included)
- 3-speed capacitive touch controls
- CleanAir function
- Hybrid baffle filters
- 6" or 8" round vertical ducting
- 6" or 8" round horizontal ducting
- Wireless remote control option
- Ambient lighting
- 5W LED lights
- Tri-level lighting
- Dual capture zones

Accessories and Blowers

Z0F-C010	Recirculating Kit (w/ charcoal filters)
Z1C-01HZ	Duct Cover, SS (For up to 9' - 10' ceiling)
CBI-290C	290 CFM Internal Blower (6" round duct)
CBI-390A	390 CFM Internal Blower (6" round duct)
CBI-600A	600 CFM Internal Blower (6" round duct)
PBN-1000A	1,000 CFM In-line Blower (8" round duct**)
CBE-1000	1,000 CFM External Blower (8" round duct**)
14000010	RF Wireless Remote Control
MUA006A	Make-Up Air Kit (600 CFM)
MUA008A	Make-Up Air Kit (1,000 CFM)

*Requires purchase of Zephyr internal, external or in-line blower, sold separately.

**10" round duct connects to external or in-line blower. Must transition from 10" to 8" before duct passes through ceiling. 10" to 8" adapter included with in-line and external blowers.

DESIGNER COLLECTION



OKEANITO WALL
BRUSHED GOLD

OKEANITO Designer Wall Hood w/ LED Lighting - BODY ONLY*

COK-E36CSX	S	36" x 22-3/4"
COK-E36CBGX	BG	36 x 22-3/4"
COK-E42CSX	S	42 x 22-3/4"
COK-E42CBGX	BG	42 x 22-3/4"
COK-E48CSX	S	48 x 22-3/4"
COK-E48CBGX	BG	48 x 22-3/4"

- Max. Blower CFM: 290-1,000 (not included)
- 3-speed electronic controls
- Wireless remote option
- Accommodates 10'1" ceiling height
- 6" or 8" round vertical ducting
- Auto delay-off
- Pro baffle filters
- CleanAir function
- LumiLight LED lights
- Dual-level lighting
- 4W LED ambient lights

*Requires purchase of Zephyr blower, sold separately.

Accessories and Blowers

Z1C-000K	Duct Cover Extension, SS (For up to a 12' ceiling)
CBI-290C	290 CFM Internal Blower (6" round duct)
CBI-390A	390 CFM Internal Blower (6" round duct)
CBI-600A	600 CFM Internal Blower (6" round duct)
PBN-1000A	1,000 CFM In-Line Blower (10" to 8" round duct**)
CBE-1000	1,000 CFM External Blower (10" or 8" round duct**)
14000005	RF Wireless Remote Control
MUA006A	Make-Up Air Kit (600 CFM)
MUA008A	Make-Up Air Kit (1,000 CFM)

**10" round duct connects to external/in-line blower. Must transition from 10" to 8" before duct passes through ceiling. 10" to 8" adapter included with external/in-line blower.

Finish: (Matte Blk)-Matte Black (Matte Wht)-Matte White (S)-Stainless Steel (BG)-Brushed Gold

Warranty: 2 years non-consumable parts, 1 year labor (DHZ); 3 years non-consumable parts, 1 year labor (COK)

ISLAND

CORE COLLECTION



ROMA ISLAND
ACT™

MODEL FINISH SIZE W x D

ROMA IS. 600 CFM Contemporary Island Hood w/ ACT™ & LED lights

ZRM-E36FS	S	36" x 27"
ZRM-E42FS	S	42" x 27"

- Max. Blower CFM: 600
- ACT Max. Blower CFM: 390, 290
- Accommodates 9'1" ceiling height
- Quick-lock installation with magnetic duct covers
- 5-speed ICON Touch® controls
- 6" round vertical ducting
- Auto delay-off
- 6W LumiLight LED lights
- Dual-level lighting
- Aluminum mesh filters

Accessories

ZRC-02RM	Recirculating Kit (w/ charcoal filters)- 36" model
ZRC-01RM	Recirculating Kit (w/ charcoal filters) - 42" model
Z0F-C002	Charcoal Filter Replacement
Z1C-01RM	Duct Cover Extension (For up to a 12' ceiling)
MUA006A	Make-Up Air Kit
RC-0002	Wireless RF Remote Control Kit

CORE COLLECTION



ANZIO ISLAND
ACT™

ANZIO IS. 600 CFM Low-Profile Modern Island Hood w/ ACT™ & LED lights

ZAZ-M90DS	S	35-7/16" x 25-9/16"
ZAZ-E42DS	S	42" x 25-9/16"

- Max. Blower CFM: 600
- ACT Max. Blower CFM: 390, 290
- Accommodates 10' ceiling height
- Quick-lock installation with magnetic duct covers
- 5-speed ICON Touch® controls
- 6" round vertical ducting
- Auto delay-off
- 6W LumiLight LED lights
- Dual-level lighting
- Aluminum mesh filters

Accessories

ZRC-02AZ	Recirculating Kit
Z0F-C091	Charcoal Filter Replacement
Z1C-00AZ	Duct Cover Extension (For up to a 12' ceiling)
MUA006A	Make-Up Air Kit
Z0F-B002	Hybrid Baffle Filter Kit (2 filters)
RC-0002	Wireless RF Remote Control Kit

CORE COLLECTION



RAVENNA ISLAND
ACT™

RAVENNA IS. 600 CFM Black Stainless Steel Island Hood w/ Smoke Gray Glass Canopy, ACT™ & LED lights

ZRE-M90BBSGG	Blk SS	35-3/16" x 25-9/16"
ZRE-E42BBSGG	Blk SS	42" x 25-9/16"

- Max. Blower CFM: 600
- ACT Max. Blower CFM: 390, 290
- Accommodates 9' ceiling height
- Quick-lock installation with magnetic duct covers
- 5-speed ICON Touch® controls
- 6" round vertical ducting
- Auto delay-off
- 6W LumiLight LED lights
- Dual-level lighting
- Aluminum mesh filters

Accessories

ZRC-00RE	Recirculating Kit (w/ charcoal filters)
Z0F-C002	Charcoal Filter Replacement
Z1C-00REBS	Duct Cover Extension (For up to a 12' ceiling)
MUA006A	Make-Up Air Kit
RC-0002	Wireless RF Remote Control Kit

DID YOU KNOW Zephyr island hoods with Quick-lock installation are the easiest island hoods to install in the market.

Finish: (S)-Stainless Steel (Blk SS)-Black Stainless Steel w/ Smoke Gray Glass
Warranty: 3 years non-consumable parts, 1 year labor

ISLAND

CORE COLLECTION



MODENA ISLAND
ACT™

MODEL FINISH SIZE W x D

MODENA IS. 600 CFM Thin Profile Island Hood w/ LED Lighting and ACT™

ZMD-M90BS	S	35-7/16" x 27-1/2"
ZMD-E42BS	S	42" x 27-1/2"

- Max. Blower CFM: 600
- ACT Max. Blower CFM: 390, 290
- Accommodates 10' ceiling height
- Quick-lock installation with magnetic duct covers
- 5-speed ICON Touch® controls
- 8" round vertical ducting
- Auto delay-off
- 6W LumiLight LED lights
- Dual-level lighting
- Aluminum mesh filters

Accessories

ZRC-00MD	Recirculating Kit (w/ charcoal filter)
Z0F-C002	Charcoal Filter Replacement
Z1C-00MD	Duct Cover Extension (For up to a 12' ceiling)
MUA006A	Make-Up Air Kit

CORE COLLECTION



LUCÉ ISLAND
ACT™

LUCÉ IS. 600 CFM Island Hood w/ LED Accent Lighting, ACT™ & LED lights

ZLC-M90CS	S	35-7/16" x 25-9/16"
ZLC-E42CS	S	42" x 25-9/16"

- Max. Blower CFM: 600
- ACT Max. Blower CFM: 390, 290
- Accommodates 9'8" ceiling height
- Quick-lock installation with magnetic duct covers
- 5-speed ICON Touch® controls
- 6" round vertical ducting
- Auto delay-off
- 6W LumiLight LED lights
- Dual-level lighting
- Aluminum mesh filters

Accessories

ZRC-00LC	Recirculating Kit (w/ charcoal filters)
Z0F-C092	Charcoal Filter Replacement
Z1C-00LC	Duct Cover Extension (For up to a 12' ceiling)
MUA006A	Make-Up Air Kit
RC-0002	Wireless RF Remote Control Kit

Lucé island illuminates in cloud white, deep blue and amber.

CORE COLLECTION



VERONA ISLAND
ACT™

VERONA IS. 600 CFM LED Illuminated Glass Island Hood w/ LED Lighting and ACT™

ZVN-M90BG	S w/ Glass	35-7/16" x 27-7/16"
ZVN-E42BG	S w/ Glass	42" x 27-7/16"

- Max. Blower CFM: 600
- ACT Max. Blower CFM: 390, 290
- Accommodates 10' ceiling height
- Quick-lock installation with magnetic duct covers
- Aluminum mesh filters
- 5-speed ICON Touch® controls
- 8" round vertical ducting
- Auto delay-off
- 6W LumiLight LED lights
- Dual-level lighting
- 3 color LED illuminated glass

Accessories

ZRC-00VN	Recirculating Kit (w/ charcoal filters)
Z0F-C002	Charcoal Filter Replacement
Z1C-00VN	Duct Cover Extension (For up to a 12' ceiling)
MUA006A	Make-Up Air Kit

Verona Island glass illuminates in cloud white, deep blue and amber.

DID YOU KNOW Lucé & Verona models have a "demo mode" that cycles through each of the three LED accent light colors every 10 seconds. To enable demo mode, hold down the "accent light" button on the bottom of the hood for 3 seconds.

Finish: (S)-Stainless Steel
Warranty: 3 years non-consumable parts, 1 year labor

ISLAND

CORE COLLECTION



MILANO ISLAND

ACT ZEPHYR

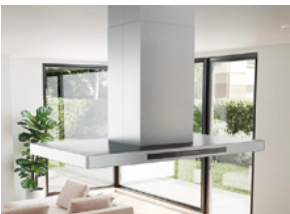
CORE COLLECTION



NAPOLI ISLAND

ACT ZEPHYR

DESIGNER COLLECTION



VISTA ISLAND

MODEL

FINISH

SIZE W x D

MILANO IS. 700 CFM Curved Canopy Island Hood w/ Zephyr Connect, PowerWave™ Blower & ACT™

ZML-M90CG	S w/ Glass	35-7/16" x 25-9/16"
ZML-M90CS	S	35-7/16" x 25-9/16"
ZML-E42CG	S w/ Glass	42" x 25-9/16"
ZML-E42CS	S	42" x 25-9/16"

- Max. Blower CFM: 700
- ACT Max. Blower CFM: 590, 390, 290
- CleanAir function
- Zephyr Connect app compatible
- 6-speed proximity controls
- 8" round vertical ducting
- Accommodates 10' ceiling height
- Aluminum mesh filters
- 6W LumiLight LED lights
- Tri-level lighting
- Auto delay-off
- Quick-lock installation with magnetic duct covers

Accessories

ZRC-00ML	Recirculating Kit (w/ charcoal filters)
Z0F-C002	Charcoal Filter Replacement
Z1C-03ML	Duct Cover Extension (For up to a 12' ceiling)
14000005	RF Wireless Remote Control
MUA008A	Make-Up Air Kit

NAPOLI IS. 700 CFM Island Hood w/ Zephyr Connect, PowerWave™ Blower, Baffle Filters & ACT™

ZNA-M90DS	S	35-7/16" x 25-9/16"
ZNA-E42DS	S	42" x 25-9/16"

- Max. Blower CFM: 700
- ACT Max. Blower CFM: 590, 390, 290
- Baffle filters
- Zephyr Connect app compatible
- Quick-lock installation with magnetic duct covers
- 6-speed proximity controls
- 8" round vertical ducting
- Accommodates 10' ceiling height
- CleanAir function
- 6W LumiLight LED lights
- Tri-level lighting
- Auto delay-off

Accessories

ZRC-03NA	Recirculating Kit (w/ charcoal filters)
Z0F-C091	Charcoal Filter Replacement
Z1C-02NA	Duct Cover Extension (For up to a 12' ceiling)
14000005	RF Wireless Remote Control
MUA008A	Make-Up Air Kit

VISTA IS. Low-Profile Island Hood w/ PAS Panel and LED Lighting- BODY ONLY*

DVL-E36ASSX	S	36" x 23-5/8"
DVL-E42ASSX	S	42" x 23-5/8"

- Max. Blower CFM: 290-1,000 (not included)
- 3-speed invisible touch controls
- Wireless remote control option
- Accommodates 10' ceiling height
- 6" or 8" round vertical ducting
- Perimeter aspiration system
- Aluminum mesh filters
- 2-1/8" body height
- 5W LED lights
- Tri-level lighting
- CleanAir function

Accessories and Blowers

ZRC-00VL	Recirculating Kit (w/ charcoal filter)
Z0F-C010	Charcoal Filter Replacement (2 per kit)
Z1C-00VL	Duct Cover Extension, SS (For up to 12' ceiling)
CBI-290C	290 CFM Internal Blower (6" round duct)
CBI-390A	390 CFM Internal Blower (6" round duct)
CBI-600A	600 CFM Internal Blower (6" round duct)
PBN-1000A	1,000 CFM In-line Blower (8" round duct**)
CBE-1000	1,000 CFM External Blower (8" round duct**)
14000010	RF Wireless Remote Control
MUA006A	Make-Up Air Kit (600 CFM)
MUA008A	Make-Up Air Kit (1,000 CFM)

*Requires purchase of Zephyr internal, external or in-line blower, sold separately.

**10" round duct connects to external or in-line blower. Must transition from 10" to 8" before duct passes through ceiling. 10" to 8" adapter included with in-line and external blowers.

Finish: (S)-Stainless Steel

Warranty: 3 years non-consumable parts, 1 year labor (ZML, ZNA); 2 years non-consumable parts, 1 year labor (DVL)

ISLAND

CORE COLLECTION



SIENA PRO ISLAND
ACT™

MODEL FINISH SIZE W x D

SIENA PRO IS. 1,200 CFM Pro Island Hood w/ Hybrid Baffle Filers, ACT™ & LED lights

ZSL-E42CS	S	42" x 28"
ZSL-E48CS	S	48" x 28"

- Max. Blower CFM: 1,200
- ACT Max. Blower CFM: 590, 390
- Auto delay-off
- Quick-lock installation with magnetic duct covers
- 5-speed ICON Touch® controls
- 10" round vertical ducting
- Accommodates 9'10" ceiling height
- 6W LumiLight LED lights
- Dual-level lighting
- Hybrid baffle filters

Accessories

Z1C-01SL	Duct Cover Extension (For up to a 12' ceiling)
MUA010A	Make-Up Air Kit
RC-0002	Wireless RF Remote Control Kit

PRO COLLECTION



TITAN ISLAND
ACT™

TITAN IS. 750 CFM Pro-Style Island Hood w/ PowerWave™ Blower, ACT™ & LED lights

AK7736BS	S	36" x 31-5/8"
AK7742BS	S	42" x 31-5/8"
AK7748BS	S	48" x 31-5/8"
AK7754BS	S	54" x 31-5/8"

- Max. Blower CFM: 750 (included)
- Max. Blower CFM: 1,300 (optional)
- ACT Max. Blower CFM: 590, 390, 290
- Auto delay-off
- CleanAir function
- 8" or 10" round vertical & horizontal ducting
- Dual-level lighting
- Accommodates 10'2" ceiling height
- Directional lighting
- 6W LumiLight LED lights
- Pro baffle filters
- 6-speed LCD controls
- Wireless remote option

Accessories

PBD-1300B	1,300 CFM Internal Blower Kit (10" round duct)
Z1C-0077	Duct Cover Extension - 36", 42" (For a 10'-12' ceiling)
Z1C-0177	Duct Cover Extension - 48", 54" (For a 10'-12' ceiling)
14000005	RF Wireless Remote Control
MUA008A	Make-Up Air Kit (750 CFM)
MUA010A	Make-Up Air Kit (1,300 CFM)

DESIGNER COLLECTION



TRAPEZE

TRAPEZE Designer Island Hood w/ LED Lighting - BODY ONLY*

CTP-E36CSX	S	36" x 26-5/8"
CTP-E48CSX	S	48 x 26-5/8"
CTP-E54CSX	S	54 x 26-5/8"
CTP-E60CSX	S	60 x 26-5/8"

- Max. Blower CFM: 290-1,000 (not included)
- 3-speed electronic controls
- Accommodates 10'4" ceiling height
- CleanAir function
- 6" or 8" round vertical ducting
- Auto delay-off
- Pro baffle filters
- LumiLight LED lights
- Dual-level lighting
- Wireless remote option

Accessories and Blowers

Z1C-00TP	Duct Cover Extension (For up to a 12' ceiling)
CBI-290C	290 CFM Internal Blower (6" round duct)
CBI-390A	390 CFM Internal Blower (6" round duct)
CBI-600A	600 CFM Internal Blower (6" round duct)
PBN-1000A	1,000 CFM In-Line Blower (10" to 8" round duct**)
CBE-1000	1,000 CFM External Blower (10" or 8" round duct**)
14000005	RF Wireless Remote Control
MUA006A	Make-Up Air Kit (600 CFM)
MUA008A	Make-Up Air Kit (1,000 CFM)

*Requires purchase of Zephyr blower, sold separately.

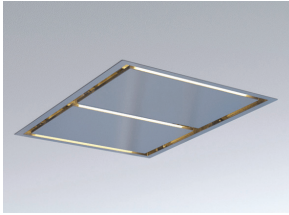
**10" round duct connects to external/in-line blower. Must transition from 10" to 8" before duct passes through ceiling. 10" to 8" adapter included with external/in-line blowers.

Finish: (S)-Stainless Steel

Warranty: 3 years non-consumable parts, 1 year labor

ISLAND /
IN-CEILING

DESIGNER COLLECTION



LUX CONNECT

TOP: 43" model shown in stainless steel
BOTTOM: 63" model shown in white



MODEL FINISH SIZE W x D

LUX Designer In-Ceiling Hood w/ Zephyr Connect, PAS Panels and LED Lighting - BODY ONLY

ALU-E43CSX	S	43-3/8" x 27-1/2"
ALU-E43CWX	W	43-3/8" x 27-1/2"
ALU-E63CSX	S	63-3/8" x 27-1/2"
ALU-E63CWX	W	63-3/8" x 27-1/2"

- Max. Blower CFM: 290-1,100 (not included)
- 3-speed capacitive touch controls
- CleanAir function
- Aluminum mesh filters
- Perimeter aspiration system
- 6" or 10" round ducting
- Vertical and horizontal ducting
- Zephyr Connect app compatible
- 10W LED light strips
- Tri-level lighting
- Wireless remote control

Accessories and Blowers

ZRC-01LX*	Recirculating Kit (w/ charcoal filters)
Z0F-C002	Charcoal Filter Replacement
CBI-290C	290 CFM Internal Blower (6" round duct)
CBI-390A	390 CFM Internal Blower (6" round duct)
CBI-600A	600 CFM Internal Blower (6" round duct)
PBI-1100B	1,100 CFM Internal Blower (10" round duct)
PBN-1000A	1,000 CFM In-line Blower (10" round duct)
CBE-1000	1,000 CFM External Blower (10" round duct)
MUA006A	Make-Up Air Kit (600 CFM)
MUA008A	Make-Up Air Kit (1,000 CFM)
MUA010A	Make-Up Air Kit (1,100 CFM)

*ZRC-01LX recirculating kit is compatible with CBI-290C and CBI-600A internal blowers only.

DID YOU KNOW The Perimeter Aspiration System moves airflow away from the central area of the hood and evenly distributes it through narrow openings around the perimeter of the hood. This ventilation method increases air velocity and improves the capture of cooking contaminants. Available in select models: ZPY, DLA, DVS, DVL, ALU, and AK85

Finish: (S)-Stainless Steel (W)-Powder Coated White
Warranty: 1 year non-consumable parts, 1 year labor

DOWNDRAFT



LIFT DOWNDRAFT

MODEL

FINISH

SIZE W x D

LIFT 18" Chimney Rise Downdraft Hood w/ LED Lighting

DLI-E30ASX	S	30"
DLI-E36ASX	S	36"

- Max. Blower CFM: 400-1,000 (not included)
- Tri-capture zones
- 3-speed capacitive touch controls
- 4-way ducting*
- 18" chimney rise
- Aluminum mesh filters
- BriteStrip™ LED lighting (3000K)
- Dual-level lighting
- Recirculating option

Accessoires et moteurs

ZRC-00LF	Recirculating Kit (w/ charcoal filters)
Z0F-C006	Charcoal Filter Replacement
DDA-0002	Wired Remote Up/Down Control
DBI-600A	600 CFM Internal Blower (400 CFM configurable)
PBN-1000A	1,000 CFM In-line Blower
CBE-1000	1,000 CFM External Blower
DDS-0030	Gas Cooktop Seal Kit (For DLI-E30ASX)
DDS-0036	Gas Cooktop Seal Kit (For DLI-E36ASX)
DDT-0030	Range Trim Kit (For DLI-E30ASX)
DDT-0036	Range Trim Kit (For DLI-E36ASX)
11030132	5' Extension Cable
DDE-0001	End Cap Trim Extension
54190053	Front Panel Rough-In Plate, 8"
54190054	Front Panel Rough-In Plate, 10"
AK00070	1-7/8" x 19" to 8" Round Transition
AK00071	1-7/8" x 19" to 10" Round Transition
AK00072	1-7/8" x 19" Adapter for AK00080 Duct
AK00080	1-7/8" x 19" Rectangular Duct, 2'
MUA006A	Make-Up Air Kit (600 CFM)
MUA008A	Make-Up Air Kit (1,000 CFM)

*4-Way Ducting includes the front, side (L & R), rear and bottom of blower housing.

DID YOU KNOW Lift is compatible with multiple cooking appliance configurations.



COOKTOP



OVEN + COOK TOP



RANGE TOP



RANGE

Check out the Lift Downdraft Configurator on [Zephyr's website](#) to help determine what components are needed for installation.



SORRENTO DOWNDRAFT

SORRENTO

500 CFM Downdraft Hood w/ 9-1/2" Rise

DD1-E30AS	S	30"
DD1-E36AS	S	36"

- Max. Blower CFM: 500
- Variable speed controls
- HVI certified
- Decorative mesh filters
- 3-1/4"x10" three position ducting*

Accessories

DDA-0001	Wired Remote Up/Down Control
MUA006A	Make-Up Air Kit

*Three position ducting includes the left, right, or bottom of blower housing.

Finish: (S)-Stainless Steel

Warranty: 2 years non-consumable parts, 1 year labor

INSERT



TORNADO MINI



TORNADO MINI ES



TWISTER



TORNADO I

MODEL

FINISH

SIZE W x D

TORNADO MINI 400 CFM Insert w/ Recirculating Option and LED Lighting

AK8400BS S 20-9/16" x 11"

- Max. Blower CFM: 400
- 3-speed slide controls
- Stainless steel liner option
- 6" round vertical ducting
- Insert height 9-11/16"
- Aluminum mesh filters
- 6W LumiLight LED lights
- Dual-level lighting

Accessories

ZRC-8400A Recirculating Kit (w/ charcoal filters)
ZOF-C084 Charcoal Filter Replacement
AK0840AS 17-1/2" - 20-1/2" Depth SS Liner (For 30" hood)
AK0846AS 17-1/2" - 20-1/2" Depth SS Liner (For 36" hood)

TORNADO MINI ES 290 CFM ENERGY STAR Insert w/ LED Lighting

AK8400BS-ES S 20-9/16" x 11"

- Max. Blower CFM: 290
- 3-speed slide controls
- ENERGY STAR® certified
- 6" round vertical ducting
- Insert height 9-11/16"
- Stainless steel liner option
- 7W LumiLight LED lights
- Dual-level lighting
- Aluminum mesh filter

Accessories

AK0840AS 17-1/2" - 20-1/2" Depth SS Liner (For 30" hood)
AK0846AS 17-1/2" - 20-1/2" Depth SS Liner (For 36" hood)

TWISTER 400 CFM Insert w/ Recirculating Option and LED Lighting

AK8000CS S 27-9/16" x 11-13/16"

- Max. Blower CFM: 400
- 3-speed slide controls
- Aluminum mesh filters
- 6" round vertical & horizontal ducting
- Insert height 11-1/4"
- Stainless steel liner option
- 6W LumiLight LED lights
- Dual-level lighting

Accessories

ZRC-0080 Recirculating Kit (w/ charcoal filters)
ZOF-C008 Charcoal Filter Replacement
AK0800AS 17-1/2" - 20-1/2" Depth SS Liner (For 30" hood)
AK0836AS 17-1/2" - 20-1/2" Depth SS Liner (For 36" hood)

TORNADO I 600 CFM Insert w/ Hybrid Baffle Filters and LED Lighting

AK8100BS S 27-9/16" x 11-3/16"

AK8134BS S 33-9/16 x 11-3/16

- Max. Blower CFM: 600
- 3-speed slide controls
- Hybrid baffle filters
- 6" round vertical & horizontal ducting
- Insert height 11-1/4"
- Stainless steel liner option
- 6W LumiLight LED lights
- Dual-level lighting

Accessories

ZRC-0080 Recirculating Kit (w/ charcoal filters)
ZOF-C008 Charcoal Filter Replacement
AK0800AS* 17-1/2" - 20-1/2" Depth SS Liner (For 30" hood)
AK0836AS 17-1/2" - 20-1/2" Depth SS Liner (For 36" hood)
MUA006A Make-Up Air Kit

*For AK8100BS model only.

DID YOU KNOW Tornado and Twister liners are adjustable and can accommodate multiple cabinet depths.

Finish: (S)-Stainless Steel

Warranty: 3 years non-consumable parts, 1 year labor (AK84); 10 years non-consumable parts, 1 year labor (AK80, AK80-ES, AK81)

INSERT

CORE COLLECTION


**TORNADO GLO
ACT™**
MODEL
FINISH
SIZE W x D
TORNADO GLO 600 CFM Insert w/ Glo LED PAS Panel and ACT™
AK8500AS
S
27-3/16" x 11-3/16"

- Max. Blower CFM: 600
- ACT Max. Blower CFM: 390, 290
- Insert height 11-5/16"
- Stainless steel liner option

- 6" vertical & horizontal ducting
- 6-speed electronic controls
- Aluminum mesh filter

- 7W Glo LED PAS Panel
- Dual-level lighting
- Perimeter aspiration system

Accessories

ZRC-0085	Recirculating Kit (w/ charcoal filters)
ZOF-C085	Charcoal Filter Replacement
14000005	RF Wireless Remote Control
AK0800AS	17-1/2" - 20-1/2" Depth SS Liner (For 30" hood)
AK0836AS	17-1/2" - 20-1/2" Depth SS Liner (For 36" hood)
MUA006A	Make-Up Air Kit

PRO COLLECTION


TORNADO II
TORNADO II 1,000 CFM Insert w/ Wireless Remote Control and LED Lighting
AK8200BS
S
29-13/16" x 15-13/16"

- Max. Blower CFM: 1,000
- 3-speed electronic touch controls
- CleanAir function
- Auto delay-off

- 10" round vertical ducting
- Insert height 11-1/2"*
- Wireless remote control

- 6W LumiLight LED lights
- Tri-level lighting
- Pro baffle filters

*Height dimension does not include 5" tall, 8" round duct adapter.

Accessories

AK0806BS	17-5/8" - 20-1/8" Depth SS Liner (For 36" hood)
AK0806AS	20-1/2" - 23-1/2" Depth SS Liner (For 36" hood)
AK0842AS	20-1/2" - 23-1/2" Depth SS Liner (For 42" hood)
MUA008A	Make-Up Air Kit

PRO COLLECTION


TORNADO III
TORNADO III Insert w/ Wireless Remote Control, LED Lighting and Multiple Blowers - BODY ONLY*
AK8300BSX
S
38-7/16" x 15-13/16"

- Max. Blower CFM: 290-1,100 (not included)
- 3-speed electronic touch controls
- CleanAir function
- Auto delay-off

- 6" or 10" round vertical ducting
- Insert height 11-1/2"***
- Wireless remote control

- 6W LumiLight LED lights
- Tri-level lighting
- Pro baffle filters

*Requires purchase of Zephyr blower, sold separately.

**Height dimension does not include 5" tall, 8" round duct adapter used with blowers 1,000 CFM or greater.

Accessories and Blowers

AK0848BS	17-5/8" - 20-1/8" Depth SS Liner (For 48" hood)
AK0848AS	20-1/2" - 23-1/2" Depth SS Liner (For 48" hood)
AK0854AS	20-1/2" - 23-1/2" Depth SS Liner (For 54" hood)
AK0860AS	20-1/2" - 23-1/2" Depth SS Liner (For 60" hood)
CBI-290C	290 CFM Internal Blower (6" round duct)
CBI-390A	390 CFM Internal Blower (6" round duct)
CBI-600A	600 CFM Internal Blower (6" round duct)
PBI-1100B	1,100 CFM Internal Blower (10" round duct)
PBN-1000A	1,000 CFM In-Line Blower (10" round duct)
CBE-1000	1,000 CFM External Blower (10" round duct)
MUA006A	Make-Up Air Kit (600 CFM)
MUA008A	Make-Up Air Kit (1,000 CFM)

Finish: (S)-Stainless Steel

Warranty: 3 years non-consumable parts, 1 year labor (AK85); 10 years non-consumable parts, 1 year labor (AK82, AK83)

INSERT

CORE COLLECTION



VORTEX

MODEL

FINISH

SIZE W x D

VORTEX 390 CFM Insert w/ Recirculating Option, Adjustable Depth and LED Lighting

AK9028BS	S	28-3/8" x 17-1/2" to 20-1/2"
AK9034BS	S	34-3/8" x 17-1/2" to 20-1/2"

- Max. Blower CFM: 390
- 3-speed slide controls
- Hybrid baffle filter

- 6" round vertical & horizontal ducting
- Insert height 12-5/16"

- 6W LumiLight LED lights
- Dual-level lighting

Accessories

ZRC-9000	Recirculating Kit (w/ charcoal filters)
ZOF-C090	Charcoal Filter Replacement

CORE COLLECTION



MONSOON MINI

MONSOON MINI 300 CFM Insert w/ Hybrid Baffle Filters and LED Lighting

AK9128BS	S	28-3/8" x 18-1/16"
AK9134BS	S	34-3/8" x 18-1/16"

- Max. Blower CFM: 300
- Insert height 6-1/8"
- 3-speed slide controls

- 7" or 3-1/4"x10" vertical ducting
- 3-1/4"x10" horizontal ducting
- Hybrid baffle filters

- 6W LumiLight LED lights
- Dual-level lighting

Accessories

ZRC-9100A	Recirculating Kit (w/ charcoal filters)
ZOF-C091	Charcoal Filter Replacement

CORE COLLECTION



MONSOON MINI II

ACT™

MONSOON MINI II 600 CFM Insert w/ Hybrid Baffle Filters, LED Lighting and ACT™

AK9528AS	S	28-3/8" x 18-1/16"
AK9534AS	S	34-3/8" x 18-1/16"
AK9540AS	S	40-3/8" x 18-1/16"
AK9546AS	S	46-3/8" x 18-1/16"

- Max. Blower CFM: 600
- ACT Max. Blower CFM: 390, 290
- Insert height 6-1/8"

- 7" or 3-1/4"x10" vertical ducting
- 3-1/4"x10" horizontal ducting
- Hybrid baffle filters

- 6W LumiLight LED lights
- Dual-level lighting
- 3-speed electronic controls

Accessories

ZRC-9100A	Recirculating Kit (w/ charcoal filters)
ZOF-C091	Charcoal Filter Replacement
MUA006A	Make-Up Air Kit

Finish: (S)-Stainless Steel

Warranty: 3 years non-consumable parts, 1 year labor

INSERT



MONSOON I
ACT™

MODEL FINISH SIZE W x D

MONSOON I 600 CFM Insert w/ LED Lighting and ACT™

AK9228BS	S	28-3/8" x 19-1/4"
AK9234BS	S	34-3/8" x 19-1/4"

- Max. Blower CFM: 600
- ACT Max. Blower CFM: 390, 290
- Insert height 12"
- Pro baffle filters

- 8" round vertical ducting
- 8" round horizontal ducting
- Wireless remote control
- CleanAir function

- 6W LumiLight LED lights
- Dual-level lighting
- 6-speed electronic controls
- Auto delay-off

MONSOON I 1,200 CFM Insert w/ LED Lighting and ACT™

AK9240BS	S	40-3/8" x 19-1/4"
AK9246BS	S	46-3/8" x 19-1/4"

- Max. Blower CFM: 1,200
- ACT Max. Blower CFM: 590, 390
- Pro baffle filters
- CleanAir function

- 10" round vertical ducting
- Insert height 12"*
- Wireless remote control
- Auto delay-off

- 6W LumiLight LED lights
- Dual-level lighting
- 6-speed electronic controls

Accessories

MUA006A	Make-Up Air Kit (600 CFM)
MUA010A	Make-Up Air Kit (1,200 CFM)

* Height dimension does not include 5" tall, 10" round duct adapter.



MONSOON II
ACT™

MONSOON II 1,200 CFM Insert w/ LED lighting and ACT™

AK9334BS	S	34-3/8" x 22-1/2"
AK9340BS	S	40-3/8" x 22-1/2"
AK9346BS	S	46-3/8" x 22-1/2"
AK9352BS	S	52-3/8" x 22-1/2"
AK9358BS	S	58-15/16 x 22-1/2"

- Max. Blower CFM: 1,200
- ACT Max. Blower CFM: 590, 390
- Pro baffle filters
- CleanAir function

- 10" round vertical ducting
- Insert height 12"*
- Wireless remote control
- Auto delay-off

- 6W LumiLight LED lights
- Dual-level lighting
- 6-speed electronic controls

Accessories

MUA010A	Make-Up Air Kit
---------	-----------------

* Height dimension does not include 5" tall, 10" round duct adapter.



MONSOON CONNECT
ACT™

MONSOON CONNECT 700 CFM Insert w/ Zephyr Connect & PowerWave™ Blower

AK9428BS	S	28-3/8" x 19-3/8"
AK9434BS	S	34-3/8" x 19-3/8"
AK9440BS	S	40-3/8" x 19-3/8"
AK9446BS	S	46-3/8" x 19-3/8"

- Max. Blower CFM: 700 (included)
- Max. Blower CFM: 1,300 (optional)
- ACT Max. Blower CFM: 590, 390, 290
- 6-speed proximity controls
- Zephyr Connect app compatible

- 8" or 10" round vertical ducting
- 8" horizontal ducting
- Insert height 12"
- Pro baffle filters
- Auto delay-off

- 6W LumiLight LED lights
- Tri-level lighting
- Wireless remote control
- CleanAir function

Accessories

PBD-1300B*	1,300 CFM Internal Blower Kit (10" round duct)
14000005	RF Wireless Remote Control
MUA008A	Make-Up Air Kit
MUA010A	Make-Up Air Kit

*PBD-1300B is a dual internal blower kit with a single blower and two blower openings. To complete the kit you must remove the blower from the hood and install it into the PBD-1300B kit.

NOTE: PBD-1300B blower is only compatible with the AK9434BS, AK9440BS, and AK9446BS models.

Finish: (S)-Stainless Steel

Warranty: 3 years non-consumable parts, 1 year labor

OUTDOOR
INSERT / WALL



SPRUCE OUTDOOR

MODEL FINISH SIZE W x D

SPRUCE 1,200 CFM Outdoor Insert for Wall or Island Installation

AK9834BS	S	34-3/8" x 22-1/2"
AK9840BS	S	40-3/8" x 22-1/2"
AK9846BS	S	46-3/8" x 22-1/2"
AK9858BS	S	58-7/8" x 22-1/2"

- Max. Blower CFM: 1,200
- 3-speed knob controls
- 304 stainless steel

- 10" round vertical ducting
- Pro baffle filters
- Directional lighting

- 6W LumiLight LED lights
- Dual-level lighting



CYPRESS OUTDOOR

Picture above - shown with Z1C-0178 optional duct cover extension.

CYPRESS 1,200 CFM Outdoor 18in Tall Pro-Style Hood w/ 32" Depth

AK7836CS	S	36" x 32"
AK7842CS	S	42" x 32"
AK7848CS	S	48" x 32"
AK7854CS	S	54" x 32"

- Max. Blower CFM: 1,200
- 3-speed knob controls
- 304 stainless steel

- 10" round vertical & horizontal ducting
- Pro baffle filters
- 32" depth

- 6W LumiLight LED lights
- Dual-level lighting

Accessories

AK0736BS	12"H x 36"W 304 SS Duct Cover (For AK7836BS)
AK0742BS	12"H x 42"W 304 SS Duct Cover (For AK7842BS)
AK0748BS	12"H x 48"W 304 SS Duct Cover (For AK7848BS)
AK0754BS	12"H x 54"W 304 SS Duct Cover (For AK7854SS)
Z1C-0178	Duct Cover Extension - 27" width (For a 10'-12' ceiling)

Finish: (S)-Stainless Steel

Warranty: 3 years non-consumable parts, 1 year labor

MICROWAVE
DRAWER



MODEL

FINISH

SIZE W x D

BUILT-IN MICROWAVE DRAWER

MWD2401AS S 23-5/8" x 16-1/8" x 23-7/8"

- | | | |
|---|---|--|
| <ul style="list-style-type: none">• 1.2 cu/ft• 304-grade stainless steel• 1000W | <ul style="list-style-type: none">• Electronic touch with LCD• White interior• Anti-fingerprint coating | <ul style="list-style-type: none">• Built-in clock• Interior lighting• ADA Compliant |
|---|---|--|

Control Features

- | | | |
|--|--|---|
| <ul style="list-style-type: none">• Touch Open/Close• Sensor Cook• Controls Lock• Defrost | <ul style="list-style-type: none">• Mute On/Off• Sensor Reheat• Kitchen Timer• Melt | <ul style="list-style-type: none">• 10 Power Levels• +30 Seconds Button• Popcorn• Soften |
|--|--|---|



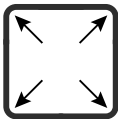
Easy Clean Coating

Equipped with an anti-fingerprint coating on the stainless steel door to eliminate greasy smudges and protects from spills of sticky beverages and foods.



Sensor Cooking

Detects humidity changes during cooking. The oven automatically adjusts the time and power to provide consistent results.



Capacity

Reheat dinner leftovers in the pan you cooked them in. The Zephyr Microwave Drawer can accommodate a 9"x13" baking dish with ease.

Finish: (S)-Stainless Steel
Warranty: 1 year non-consumable parts, 1 year labor

BRISAS
RANGE HOODS



ACT™

MODEL FINISH SIZE W x D

TRADITIONAL CHIMNEY WALL RANGE HOOD w/ Airflow Control Technology (ACT™)

BVE-E30BS	S	30" x 19-3/4"
BVE-E36BS	S	36" x 19-3/4"

- Max. Blower CFM: 600
- ACT Max. Blower CFM: 390, 290
- Accommodates 9'4" ceiling height
- 3 speed electronic controls
- 6" round vertical ducting
- Aluminum mesh filters
- LED strip lighting
- Dual-level lighting

Parts & Accessories

BRC-0008	Recirculating Kit (w/ charcoal filters)
ZOF-C091	Charcoal Filter Replacement
B1C-00VE	Duct Cover Extension Kit (up to 12' ceiling)



ACT™

CHIMNEY WALL RANGE HOOD W/ CURVED GLASS CANOPY w/ Airflow Control Technology (ACT™)

BMI-E30CG	S w/ Glass	30" x 19-3/4"
BMI-E36CG	S w/ Glass	36" x 19-3/4"

- Max. Blower CFM: 600
- ACT Max. Blower CFM: 390, 290
- Accommodates 9'4" ceiling height
- 3 speed electronic controls
- 6" round vertical ducting
- Aluminum mesh filters
- LED strip lighting
- Dual-level lighting

Parts & Accessories

BRC-0006	Recirculating Kit (w/ charcoal filters)
ZOF-C093	Charcoal Filter Replacement
B1C-00MI	Duct Cover Extension Kit (up to 12' ceiling)



ACT™

CHIMNEY ISLAND RANGE HOOD W/ CURVED GLASS CANOPY w/ Airflow Control Technology (ACT™)

BML-E30BG	S w/ Glass	30" x 25-9/16"
BML-E36BG	S w/ Glass	36" x 25-9/16"

- Max. Blower CFM: 600
- ACT Max. Blower CFM: 390, 290
- Accommodates 8'11" ceiling height
- 3 speed electronic controls
- 6" round vertical ducting
- Aluminum mesh filters
- LED strip lighting
- Dual-level lighting

Parts & Accessories

BRC-0007	Recirculating Kit (w/ charcoal filters)
ZOF-C094	Charcoal Filter Replacement
B1C-00ML	Duct Cover Extension Kit (up to 12' ceiling)

Finish: (S)-Stainless Steel

Warranty: 1 year non-consumable parts, 1 year labor within service area

BRISAS WINE &
BEVERAGE COOLERS



MODEL FINISH SIZE W x D

SINGLE ZONE BEVERAGE COOLER

BBV24C01AG SS + Glass 23-7/8" x 33-7/8" x 23-1/2"*

- 38° - 65° F
- 40 dBA
- Capacitive touch controls
- Vibration dampening system
- Dual-pane glass
- Sabbath mode
- 8 bottle/112 12oz can capacity
- 1 black wire rack
- 2 transparent gray glass shelves
- Field-reversible door
- 304-grade stainless steel
- Zero-clearance door hinge
- PreciseTemp™
- Active cooling technology
- Built-in or freestanding
- Blue LED lighting
- Door open alarm

Parts & Accessories

Z0F-C004 Replacement Carbon Filter

*Depth of cabinet with door, not including handle.

DUAL ZONE WINE COOLER

BWN24C02AG SS + Glass 23-7/8" x 33-7/8" x 23-1/2"*

- 40° - 65° F (each zone)
- 40 dBA
- Capacitive touch controls
- Vibration dampening system
- Dual-pane glass
- Zero-clearance door hinge
- 46 bottle capacity
- 5 black wire racks
- Door open alarm
- Field-reversible door
- 304-grade stainless steel
- PreciseTemp™
- Active cooling technology
- Built-in or freestanding
- Blue LED lighting
- Sabbath mode

Parts & Accessories

Z0F-C004 Replacement Carbon Filter

*Depth of cabinet with door, not including handle.

FRENCH DOOR DUAL ZONE WINE & BEVERAGE COOLER

BWB24C32AG SS + Glass 23-7/8" x 33-7/8" x 23-1/2"*

- 38° - 65° F (each zone)
- 40 dBA
- Capacitive touch controls
- Vibration dampening system
- Dual-pane glass
- Zero-clearance door hinge
- 21 bottle/64 12oz can capacity
- 6 black wire racks
- 3 transparent gray glass shelves
- Door open alarm
- 304-grade stainless steel
- PreciseTemp™
- Active cooling technology
- Built-in or freestanding
- Blue LED lighting
- Sabbath mode

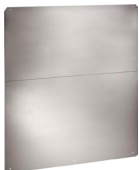
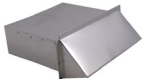
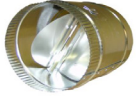
Parts & Accessories

Z0F-C004 Replacement Carbon Filter

*Depth of cabinet with door, not including handle.

Door Finish: 304-grade Stainless Steel + Glass Finish: Black. Interior Finish: Black.
Warranty: 2 years non-consumable parts, 5 years compressor, 1 year labor

ACCESSORIES



MODEL

DESCRIPTION

HVAC Accessories

AK00029	6" round in-line damper
AK00049	7" round in-line damper
AK00069	8" round in-line damper
AK00079	10" round in-line damper

AK00039	7 to 6" round reducer
AK00037	8 to 6" round reducer
AK00035	8 to 7" round reducer
AK00040	10 to 8" round reducer

AK00146	6" round exhaust roof cap w/bird screen
AK00147	7" round exhaust roof cap w/bird screen
AK00148	8" round exhaust roof cap w/bird screen
AK00150	10" round exhaust roof cap w/bird screen

AK00041	3-1/4" x 10" rectangular exhaust wall cap w/ damper & bird screen
---------	---

AK00042	6" round exhaust wall cap w/damper & bird screen
AK00043	7" round exhaust wall cap w/damper & bird screen
AK00044	8" round exhaust wall cap w/damper & bird screen
AK00045	10" round exhaust wall cap w/damper & bird screen

AK00030	6" round inlet wall cap w/bird screen
AK00031	7" round inlet wall cap w/bird screen
AK00032	8" round inlet wall cap w/bird screen
AK00052	10" round inlet wall cap w/bird screen

AK00066	6" round damper with collar
AK00067	7" round damper with collar

Universal Make-Up Air Damper Kits

MUA006A	6" round make-up air damper kit for up to 600 CFM
MUA008A	8" round make-up air damper kit for up to 1,000 CFM
MUA010A	10" round make-up air damper kit for up to 1,200 CFM

DID YOU KNOW Zephyr's Universal Make-Up Air Dampers can be used with any range hood over 300 CFM, even non-Zephyr branded range hoods.

Universal Telescopic Stainless Steel Backsplash

AK1710	Backsplash, Telescopic, 30", SS
AK1716	Backsplash, Telescopic, 36", SS
AK1712	Backsplash, Telescopic, 42", SS
AK1718	Backsplash, Telescopic, 48", SS
AK1714	Backsplash, Telescopic, 54", SS

DID YOU KNOW the telescopic stainless steel backsplash can be used with any hood with the same width.

Warm White LED Bulb - Direct Replacement for GU10 Halogen Bulbs

Z0B0040	Bloom™ GU10 LED (6W, 3000K)
---------	-----------------------------

TO OBTAIN SERVICE UNDER WARRANTY OR FOR ANY SERVICE RELATED QUESTIONS

United States Customers please call: 1-888-880-8368 or contact us at: zephyronline.com/contact

Canada Customers please call: 1-800-361-0799 or Email: service@distinctive-online.com

Zephyr Ventilation, LLC (referred to herein as "we" or "us") warrants to the original consumer purchaser (referred to herein as "you" or "your") of Zephyr products (the "Products") that such Products will be free from defects in materials or workmanship as follows:

xx* Year Limited Warranty for Parts: For xx* years from the date of your original purchase of the Products, we will provide, free of charge, Products or parts (including LED light bulbs, if applicable) to replace those that failed due to manufacturing defects subject to the exclusions and limitations below. We may choose, in our sole discretion, to repair or replace parts before we elect to replace the Products.

One Year Limited Warranty for Labor: For one year from the date of your original purchase of the Products, we will provide, free of charge, the labor cost associated with repairing the Products or parts to replace those that failed due to manufacturing defects subject to the exclusions and limitations below. After the first year from the date of your original purchase, you are responsible for all labor costs associated with this warranty.

Warranty Exclusions: This warranty covers only repair or replacement, at our option, of defective Products or parts and does not cover any other costs related to the Products including but not limited to: (a) normal maintenance and service required for the Products and consumable parts such as fluorescent, incandescent or halogen light bulbs, mesh and char- coal filters and fuses; (b) any Products or parts which have been subject to freight damage, misuse, negligence, accident, faulty installation or installation contrary to recommended installation instructions, improper maintenance or repair (other than by us); (c) commercial or government use of the Products or use otherwise inconsistent with its intended purpose; (d) natural wear of the finish of the Products or wear caused by improper maintenance, use of corrosive and abrasive cleaning products, pads, and oven cleaner products; (e) chips, dents or cracks caused by abuse or misuse of the Products; (f) service trips to your home to teach you how to use the Products; (g) damage to the Products caused by accident, fire, floods, acts of God; or (h) Custom installations or alterations that impact serviceability of the Products. If you are outside our service area, additional charges may apply for shipping costs for warranty repair at our designated service locations and for the travel cost to have a service technician come to your home to repair, remove or reinstall the Products. After the first year from the date of your original purchase, you are also responsible for all labor costs associated with this warranty. All Products must be installed by a qualified professional installer to be eligible for warranty repairs or service.

Limitations of Warranty. OUR OBLIGATION TO REPAIR OR REPLACE, AT OUR OPTION, SHALL BE YOUR SOLE AND EXCLUSIVE REMEDY UNDER THIS WARRANTY. WE SHALL NOT BE LIABLE FOR INCIDENTAL, CONSEQUENTIAL OR SPECIAL DAMAGES ARISING OUT OF OR IN CONNECTION WITH THE USE OR PERFORMANCE OF THE PRODUCTS. THE EXPRESS WARRANTIES IN THE PRECEDING SECTION ARE EXCLUSIVE AND IN LIEU OF ALL OTHER EXPRESS WARRANTIES. WE HEREBY DISCLAIM AND EXCLUDE ALL OTHER EXPRESS WARRANTIES FOR THE PRODUCTS, AND DISCLAIM AND EXCLUDE ALL WARRANTIES IMPLIED BY LAW, INCLUDING THOSE OF MERCHANTABILITY AND FITNESS FOR A PARTICULAR PURPOSE.

Some states or provinces do not allow limitations on the duration of an implied warranty or the exclusion or limitation of incidental or consequential damages, so the above limitations or exclusions may not apply to you. To the extent that applicable law prohibits the exclusion of implied warranties, the duration of any applicable implied warranty is limited to the same three-year and one-year periods described above if permitted by applicable law. Any oral or written description of the Products is for the sole purpose of identifying the Products and shall not be construed as an express warranty. Prior to using, implementing or permitting use of the Products, you shall determine the suitability of the Products for the intended use, and you shall assume all risk and liability whatsoever in connection with such determination. We reserve the right to use functionally equivalent refurbished or reconditioned parts or Products as warranty replacements or as part of warranty service. This warranty is not transferable from the original purchaser and only applies to the consumer residence where the Product was originally installed located in the United States and Canada. This warranty is not extended to resellers.

To Obtain Service Under Limited Warranty: To qualify for warranty service, you must: (a) notify us at the address or telephone number stated below within 60 days of the discovery of the defect; (b) give the model number and serial number; and (c) describe the nature of any defect in the Product or part. At the time of the request for warranty service, you must present evidence of your proof of purchase and proof of the original purchase date. If we determine that the warranty exclusions listed above apply or if you fail to provide the necessary documentation to obtain service, you will be responsible for all shipping, travel, labor and other costs related to the services. This warranty is not extended or restarted upon warranty repair or replacements.

Please check our website for any additional Product information, www.zephyronline.com
Zephyr, 2277 Harbor Bay Parkway, Alameda, CA 94502

*xx pertains to the number of years of warranty on parts for each hood. Please refer to the hood model in the pages above, to know the exact number of years.

Zephyr Ventilation, LLC (referred to herein as “we” or “us”) warrants to the original consumer purchaser (referred to herein as “you” or “your”) of Zephyr products (the “Products”) that such Products will be free from defects in materials or workmanship as follows:

Five Year Limited Warranty for Compressor:

For five years from the date of your original purchase of the Products, we will provide, free of charge, compressor parts to replace those that failed due to manufacturing defects subject to the exclusions and limitations below. We may choose, in our sole discretion, to repair or replace parts before we elect to replace the Products.

Two Year Limited Warranty for Parts:

For two years from the date of your original purchase of the Products, we will provide, free of charge, Products or parts (including LED light bulbs, if applicable) to replace those that failed due to manufacturing defects subject to the exclusions and limitations below. We may choose, in our sole discretion, to repair or replace parts before we elect to replace the Products.

One Year Limited Warranty for Labor:

For one year from the date of your original purchase of the Products, we will provide, free of charge, the labor cost associated with repairing the Products or parts to replace those that failed due to manufacturing defects subject to the exclusions and limitations below. After the first year from the date of your original purchase, you are responsible for all labor costs associated with this warranty.

To Obtain Service Under Limited Warranty:

To qualify for warranty service, you must: (a) notify us at the address or telephone number stated below within 60 days of the discovery of the defect; (b) give the model number and serial number; and (c) describe the nature of any defect in the Product or part. At the time of the request for warranty service, you must present evidence of your proof of purchase and proof of the original purchase date. If we determine that the warranty exclusions listed above apply or if you fail to provide the necessary documentation to obtain service, you will be responsible for all shipping, travel, labor and other costs related to the services. This warranty is not extended or restarted upon warranty repair or replacements.

Warranty Exclusions:

This warranty covers only repair or replacement, at our option, of defective Products or parts and does not cover any other costs related to the Products including but not limited to: (a) normal maintenance and service required for the Products and consumable parts such as filters, light bulbs, fuses; (b) any Products or parts which have been subject to freight damage, misuse, negligence, accident, faulty installation or installation contrary to recommended installation instructions, improper maintenance or repair (other than by us); (c) commercial or government use of the Products or use otherwise inconsistent with its intended purpose; (d) natural wear of the finish of the Products or wear caused by improper maintenance, use of corrosive and abrasive cleaning products, pads, and oven cleaner products; (e) chips, dents or cracks caused by abuse or misuse of the Products; (f) service trips to your home to teach you how to use the Products; (g) damage to the Products caused by accident, fire, floods, acts of God; or (h) Custom installations or alterations that impact serviceability of the Products. (i) Damage to personal property or food spoilage from use of this product. If you are outside our service area, additional charges may apply for shipping costs for warranty repair at our designated service locations and for the travel cost to have a service technician come to your home to repair, remove or reinstall the Products. After the first year from the date of your original purchase, you are also responsible for all labor costs associated with this warranty. All Products must be installed by a qualified professional installer to be eligible for warranty repairs or service.

Limitations of Warranty:

OUR OBLIGATION TO REPAIR OR REPLACE, AT OUR OPTION, SHALL BE YOUR SOLE AND EXCLUSIVE REMEDY UNDER THIS WARRANTY. WE SHALL NOT BE LIABLE FOR INCIDENTAL, CONSEQUENTIAL OR SPECIAL DAMAGES ARISING OUT OF OR IN CONNECTION WITH THE USE OR PERFORMANCE OF THE PRODUCTS. THE EXPRESS WARRANTIES IN THE PRECEDING SECTION ARE EXCLUSIVE AND IN LIEU OF ALL OTHER EXPRESS WARRANTIES. WE HEREBY DISCLAIM AND EXCLUDE ALL OTHER EXPRESS WARRANTIES FOR THE PRODUCTS, AND DISCLAIM AND EXCLUDE ALL WARRANTIES IMPLIED BY LAW, INCLUDING THOSE OF MERCHANTABILITY AND FITNESS FOR A PARTICULAR PURPOSE.

Some states or provinces do not allow limitations on the duration of an implied warranty or the exclusion or limitation of incidental or consequential damages, so the above limitations or exclusions may not apply to you. To the extent that applicable law prohibits the exclusion of implied warranties, the duration of any applicable implied warranty is limited to the same two-year and one-year periods described above if permitted by applicable law. Any oral or written description of the Products is for the sole purpose of identifying the Products and shall not be construed as an express warranty. Prior to using, implementing or permitting use of the Products, you shall determine the suitability of the Products for the intended use, and you shall assume all risk and liability whatsoever in connection with such determination. We reserve the right to use functionally equivalent refurbished or reconditioned parts or Products as warranty replacements or as part of warranty service. This warranty is not transferable from the original purchaser and only applies to the consumer residence where the Product was originally installed located in the United States and Canada. This warranty is not extended to resellers.

PRODUCT GUIDE 2024

ZEPHYR

T 800 361 0799 F 450 682 7943

www.distinctive-online.com info@distinctive-online.com

EASTERN CANADA

Head Office & Warehouse
2025 Cunard Street
Laval, QC H7S 2N1

WESTERN CANADA

Warehouse
NFI 1020 Derwent Way
Delta, BC V3M 5R1

PARTS & SERVICE

service@distinctive-online.com
1-800-561-7265

ORDER DESK

orderdesk@distinctive-online.com