



**ZEPHYR**  
**PRESRV™**

**WINE & BEVERAGE COOLERS**  
**PRODUCT GUIDE 2024**

## TABLE OF CONTENTS

MODEL	PAGE
<b>BEVERAGE COOLERS</b>	
PRB15C01CG	3
PRB24C01CG	3
PRB24C01CBSG	3
PRB24C01CPG	4
PRPB24C01BG	4
PRB24C01AG-ADA	5
PRB24C01AS-ADA	5
PRB24F01BG	6
PRB24F01BPG	6
<b>WINE COOLERS</b>	
<b>SINGLE ZONE</b>	
PRW15C01CG	7
PRW24C01CG	7
PRW24F01CG	7
<b>DUAL ZONE</b>	
PRW24C02CG	8
PRW24C02CBSG	8
PRW24C02CPG	8
PRW24C32CG	9
PRPW24C02AG	9
PRW24C02AG-ADA	9
PRW24F02CG	10
PRW24F02CPG	10
<b>COMBINATION WINE &amp; BEVERAGE COOLERS</b>	
PRWB24C32CG	11
PRWB24F02BG	11
<b>REFRIGERATOR DRAWERS</b>	
PRRD24C1AS	12
PRRD24C2AS	12
PRRD24C2AP	12
PRRD24C2AS-OD	12
<b>KEGERATORS</b>	
PRKB24C01AG	13
PRKB24C01AS-OD	13
<b>OUTDOOR REFRIGERATOR / BEVERAGE COOLER</b>	
PRR24C01AS-OD	14
PRB24C01AS-OD	14
<b>WARRANTY</b>	
	15

PRESRV™  
BEVERAGE COOLERS



MODEL	FINISH	SIZE W x H x D
<b>SINGLE ZONE BEVERAGE COOLER</b>		
PRB15C01CG	SS + Glass	15" x 33-7/8" x 23-3/8"*

- 34° - 50° F
- 39 dBA
- 3-Color electronic touch controls
- Field-reversible door
- 4-level 3-color LED lighting
- 304-grade stainless steel door
- 4 bottle, 64 12oz can capacity
- 1 full-extension wood rack
- 2 adjustable glass shelves
- Zero-clearance concealed door hinge
- ENERGY STAR® certified
- Door lock
- Built-in or freestanding
- PreciseTemp™
- Active cooling technology
- Vibration dampening system
- Sabbath mode

**Parts & Accessories**

ZOF-C004	Replacement Carbon Filter
PRHAN-C102	Contemporary Handle Kit – Brushed Gold (1 per kit)
PRHAN-C104	Contemporary Handle Kit – Matte Black (1 per kit)
PRHAN-C001	Pro Handle Kit – Stainless Steel (1 per kit)

\*Depth of cabinet with door, not including handle



MODEL	FINISH	SIZE W x H x D
<b>SINGLE ZONE BEVERAGE COOLER</b>		
PRB24C01CG	SS + Glass	23-7/8" x 33-15/16" x 23-3/8"*

- 34° - 50° F
- 39 dBA
- 3-Color electronic touch controls
- Field-reversible door
- 4-level 3-color LED lighting
- Sabbath mode
- Zero-clearance concealed door hinge
- 7 bottles, 108 12oz can capacity or 13 bottles, 80 12oz can capacity
- 1 full-extension wood rack
- 1 adjustable glass retractable quarter-shelf
- 1 adjustable glass shelf
- Large diameter bottle rack
- Door lock
- Built-in or freestanding
- PreciseTemp™
- Active cooling technology
- Vibration dampening system
- ENERGY STAR® certified
- 304-grade stainless steel door

**Parts & Accessories**

ZOF-C004	Replacement Carbon Filter
PRHAN-C102	Contemporary Handle Kit – Brushed Gold (1 per kit)
PRHAN-C104	Contemporary Handle Kit – Matte Black (1 per kit)
PRHAN-C001	Pro Handle Kit – Stainless Steel (1 per kit)

\*Depth of cabinet with door, not including handle



MODEL	FINISH	SIZE W x H x D
<b>SINGLE ZONE BEVERAGE COOLER - BLACK STAINLESS STEEL</b>		
PRB24C01CBSSG	BLK SS + Glass	23-7/8" x 33-7/8" x 23-5/8"*

- 34° - 50° F
- 39 dBA
- 3-Color electronic touch controls
- Field-reversible door
- 4-level 3-color LED lighting
- Sabbath mode
- Zero-clearance concealed door hinge
- 7 bottles, 108 12oz can capacity or 13 bottles, 80 12oz can capacity
- 1 full-extension wood rack
- 1 adjustable glass retractable quarter-shelf
- 1 adjustable glass shelf
- Large diameter bottle rack
- Door lock
- Built-in or freestanding
- PreciseTemp™
- Active cooling technology
- Vibration dampening system
- ENERGY STAR® certified
- 304-grade black stainless steel door

**Parts & Accessories**

ZOF-C004	Replacement Carbon Filter
PRHAN-C102	Contemporary Handle Kit – Brushed Gold (1 per kit)
PRHAN-C104	Contemporary Handle Kit – Matte Black (1 per kit)

\*Depth of cabinet with door, not including handle

Door Finish: 304-grade Stainless Steel + Glass, 304-grade Black Stainless Steel + Glass. Cabinet Finish: Black. Interior Finish: Black  
Warranty: 2 years labor & non-consummable parts, 5 years compressor

Specifications and features may vary. Please refer to the manufacturer's website for the latest updates.

PRESRV™  
BEVERAGE COOLERS



Shown with wood panel and optional matte black handle



MODEL	FINISH	SIZE W x H x D
<b>SINGLE ZONE BEVERAGE COOLER - PANEL READY (HANDLE NOT INCLUDED)</b>		
PRB24C01CPG	PR + Glass	23-7/8" x 33-7/8" x 23"*
<ul style="list-style-type: none"> <li>• 34° - 50° F</li> <li>• 39 dBA</li> <li>• 3-Color electronic touch controls</li> <li>• Field-reversible door</li> <li>• 4-level 3-color LED lighting</li> <li>• Sabbath mode</li> <li>• Zero-clearance door hinge</li> </ul>	<ul style="list-style-type: none"> <li>• 7 bottles, 108 12oz can capacity or 13 bottles, 80 12oz can capacity</li> <li>• 1 full-extension wood rack</li> <li>• 1 adjustable glass retractable quarter-shelf</li> <li>• 1 adjustable glass shelf</li> <li>• Large diameter bottle rack</li> </ul>	<ul style="list-style-type: none"> <li>• Door lock</li> <li>• Built-in or freestanding</li> <li>• PreciseTemp™</li> <li>• Active cooling technology</li> <li>• Vibration dampening system</li> </ul>
<b>Parts &amp; Accessories</b>		
ZOF-C004	Replacement Carbon Filter	
PRHAN-C101	Contemporary Handle Kit – Stainless Steel (1 per kit)	
PRHAN-C102	Contemporary Handle Kit – Brushed Gold (1 per kit)	
PRHAN-C104	Contemporary Handle Kit – Matte Black (1 per kit)	
PRHAN-C001	Pro Handle Kit – Stainless Steel (1 per kit)	
PRPNLC24A	Solid Panel Ready Door	

\*Depth of cabinet without panel, not including handle (compatible with 5/8" or 3/4" panel thickness)

MODEL	FINISH	SIZE W x H x D
<b>SINGLE ZONE PRO BEVERAGE COOLER</b>		
PRPB24C01BG	SS + Glass	23-7/8" x 33-7/8" x 23-5/8"*
<ul style="list-style-type: none"> <li>• 34° - 50° F</li> <li>• 39 dBA</li> <li>• 3-Color electronic touch controls</li> <li>• Field-reversible door</li> <li>• 4-level 3-color LED lighting</li> <li>• Sabbath mode</li> <li>• Zero-clearance door hinge</li> </ul>	<ul style="list-style-type: none"> <li>• 7 bottles, 105 12oz can capacity or 13 bottles, 77 12oz can capacity</li> <li>• 1 full-extension wood rack</li> <li>• 1 adjustable glass retractable quarter-shelf</li> <li>• 1 adjustable glass shelf</li> <li>• Large diameter bottle rack</li> </ul>	<ul style="list-style-type: none"> <li>• Door lock</li> <li>• Built-in or freestanding</li> <li>• PreciseTemp™</li> <li>• Active cooling technology</li> <li>• Vibration dampening system</li> <li>• ENERGY STAR® certified</li> <li>• 304-grade stainless steel door</li> </ul>
<b>Parts &amp; Accessories</b>		
ZOF-C004	Replacement Carbon Filter	

\*Depth of cabinet with door, not including handle

**Shared Features**

**34° PreciseTemp™**  
Multiple internal sensors help maintain accurate temperatures.

**Active Cooling Technology**  
An on-board computer controls an active cooling fan to provide temperature stability and even cooling.

**Dual-Pane, Low-e, Argon-Filled Glass**  
Improves insulation to minimize heat exchange and increases soundproofing characteristics.

**3-Color LED Lighting**  
LED lighting in Cloud White, Deep Blue and Amber.

**Vibration Dampening System**  
Noise and vibration is reduced to minimize wine disturbance.

**Zephyr Warranty**  
We back our products with a generous 2 year parts and labor warranty along with a 5 year warranty on the compressor.

Door Finish: 304-grade Stainless Steel + Glass, 304-grade Black Stainless Steel + Glass. Cabinet Finish: Black. Interior Finish: Black  
Warranty: 2 years labor & non-consumable parts, 5 years compressor

Specifications and features may vary. Please refer to the manufacturer's website for the latest updates.

PRESRV™  
BEVERAGE COOLERS



**MODEL FINISH SIZE W x H x D**

**SINGLE ZONE BEVERAGE COOLER WITH GLASS DOOR - ADA**

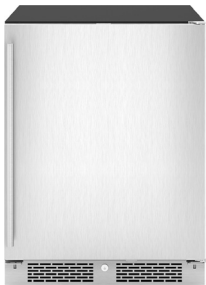
**PRB24C01AG-ADA SS + Glass 23-7/8" x 31-5/8" x 23-1/8"\***

- 34° - 50° F
- 40 dBA
- Capacitive touch controls
- Field-reversible door
- 3-color LED lighting
- Door lock
- 7 bottle, 112 12oz can capacity
- 1 full-extension wood rack
- 2 adjustable glass shelves
- 304-grade stainless steel door
- Zero-clearance door hinge
- ENERGY STAR® certified
- Built-in or freestanding
- PreciseTemp™
- Active cooling technology
- Vibration dampening system
- Sabbath mode

**Parts & Accessories**

- ZOF-C004 Replacement Carbon Filter
- PRHAN-C102 Contemporary Handle Kit – Brushed Gold (1 per kit)
- PRHAN-C104 Contemporary Handle Kit – Matte Black (1 per kit)
- PRHAN-C001 Pro Handle Kit – Stainless Steel (1 per kit)

\*Depth of cabinet with door, not including handle



**SINGLE ZONE BEVERAGE COOLER WITH STAINLESS STEEL DOOR - ADA**

**PRB24C01AS-ADA SS 23-7/8" x 31-5/8" x 23-1/8"\***

- 34° - 50° F
- 40 dBA
- Capacitive touch controls
- Field-reversible door
- 3-color LED lighting
- Door lock
- 7 bottle, 112 12oz can capacity
- 1 full-extension wood rack
- 2 adjustable glass shelves
- 304-grade stainless steel solid door
- Zero-clearance door hinge
- ENERGY STAR® certified
- Built-in or freestanding
- PreciseTemp™
- Active cooling technology
- Vibration dampening system
- Sabbath mode

**Parts & Accessories**

- ZOF-C004 Replacement Carbon Filter
- PRHAN-C102 Contemporary Handle Kit – Brushed Gold (1 per kit)
- PRHAN-C104 Contemporary Handle Kit – Matte Black (1 per kit)
- PRHAN-C001 Pro Handle Kit – Stainless Steel (1 per kit)

\*Depth of cabinet with door, not including handle

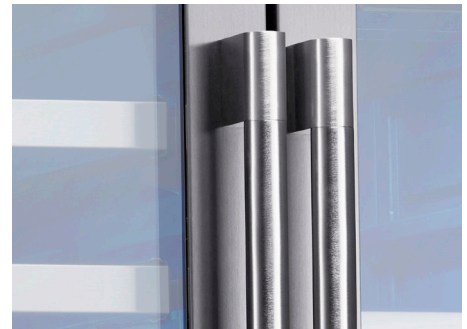
**Parts & Accessories**



PRHAN-C101, PRHAN-C102, PRHAN-C104:  
contemporary handle kits



PRHAN-C001, PRHAN-F001:  
pro handle kits (compact & full size)



PRHAN-C002:  
pro handle kit (french door)

Door Finish: 304-grade Stainless Steel + Glass, 304-grade Black Stainless Steel + Glass. Cabinet Finish: Black. Interior Finish: Black  
Warranty: 2 years labor & non-consumable parts, 5 years compressor

Specifications and features may vary. Please refer to the manufacturer's website for the latest updates.

PRESRV™ FULL SIZE  
BEVERAGE COOLERS



Shown with wood panel and optional stainless steel handle



**MODEL FINISH SIZE W x H x D**

**SINGLE ZONE FULL SIZE BEVERAGE COOLER**

**PRB24F01BG SS + Glass 23-7/8" x 69-1/4" x 27-3/8"\***

- 34° - 65° F
- 41 dBA
- 3-Color electronic touch controls
- Built-in or freestanding
- 4-level 3-color LED lighting
- Field-reversible door
- Door lock
- 14 750ml bottles, 168 12oz bottles, 98 12oz cans capacity
- 4 adjustable glass shelves
- 1 full-extension stainless steel rollout bin
- 1 full-extension black wood rack
- Inverter compressor
- Zero-clearance concealed door hinge
- PreciseTemp™
- Active cooling technology
- Vibration dampening system
- Sabbath mode
- 304-grade stainless steel door

**Parts & Accessories**

Z0F-C004 Replacement Carbon Filter  
PRHAN-F001 Pro Handle Kit (1 per kit)

\*Depth of cabinet with door, not including handle

**FULL SIZE PANEL READY SINGLE ZONE BEVERAGE COOLER**

**PRB24F01BPG PR + Glass 23 7/8" x 69-1/4" x 27-3/8"\***

- 34° - 50° F
- 41 dBA
- 3-Color electronic touch controls
- Built-in or freestanding
- 4-level 3-color LED lighting
- Inverter compressor
- 14 750ml bottles, 168 12oz bottles, 98 12oz cans capacity
- 4 adjustable glass shelves
- 1 full-extension rollout bin
- 1 full-extension black wood rack
- Sabbath mode
- Zero-clearance Hettich articulating door hinge
- PreciseTemp™
- Active cooling technology
- Vibration dampening system
- Field-reversible door
- Door lock

**Parts & Accessories**

Z0F-C004 Replacement Carbon Filter  
PRHAN-F001 Pro Handle Kit (1 per kit)

\*Depth of cabinet with door, not including handle



**DID YOU KNOW** A full-extension stainless steel rollout bin comes standard on the Full Size Beverage and Full Size Wine & Beverage Coolers. It's perfect for the days, or nights, you entertain or just want a beverage conveniently within reach. It also provides quick and accessible access to garnishes for that specialty cocktail.

**DID YOU KNOW** The Full Size Beverage Coolers and Full Size Wine & Beverage Cooler come standard with an inverter compressor so they can now achieve an ultra-low temperature of 34°F. An inverter compressor uses a BLDC motor to achieve lower temperatures while using less energy and performing more quietly than a fixed speed compressor.

Door Finish: 304-grade Stainless Steel + Glass, 304-grade Black Stainless Steel + Glass. Cabinet Finish: Black. Interior Finish: Black  
Warranty: 2 years labor & non-consumable parts, 5 years compressor

Specifications and features may vary. Please refer to the manufacturer's website for the latest updates.

PRESRV™ SINGLE ZONE  
WINE COOLERS



**MODEL FINISH SIZE W x H x D**

**SINGLE ZONE WINE COOLER**

**PRW15C01CG SS + Glass 15" x 33-7/8" x 23-3/8"\***

- 38° - 65° F
- 39 dBA
- 3-Color electronic touch controls
- 4-level 3-color LED lighting
- Field-reversible door
- 27 bottle capacity
- 6 full-extension wood rack
- Built-in or freestanding
- Zero-clearance concealed door hinge
- 304-grade stainless steel door
- PreciseTemp™
- Active cooling technology
- Vibration dampening system
- Sabbath mode
- Door lock
- ENERGY STAR® certified

**Parts & Accessories**

- ZOF-C004 Replacement Carbon Filter
- PRHAN-C102 Contemporary Handle Kit – Brushed Gold (1 per kit)
- PRHAN-C104 Contemporary Handle Kit – Matte Black (1 per kit)
- PRHAN-C001 Pro Handle Kit – Stainless Steel (1 per kit)

\*Depth of cabinet with door, not including handle



**SINGLE ZONE WINE COOLER**

**PRW24C01CG SS + Glass 23-7/8" x 33-15/16" x 23-3/8"\***

- 38° - 65° F
- 39 dBA
- 3-Color electronic touch controls
- 4-level 3-color LED lighting
- Sabbath mode
- ENERGY STAR® certified
- 53 bottle capacity
- 6 full-extension wood racks
- Large diameter bottle rack
- Field-reversible door
- Zero-clearance concealed door hinge
- Door lock
- PreciseTemp™
- Active cooling technology
- Built-in or freestanding
- Vibration dampening system
- 304-grade stainless steel door

**Parts & Accessories**

- ZOF-C004 Replacement Carbon Filter
- PRHAN-C102 Contemporary Handle Kit – Brushed Gold (1 per kit)
- PRHAN-C104 Contemporary Handle Kit – Matte Black (1 per kit)
- PRHAN-C001 Pro Handle Kit – Stainless Steel (1 per kit)

\*Depth of cabinet with door, not including handle



**SINGLE ZONE FULL SIZE WINE COOLER**

**PRW24F01CG SS + Glass 23-7/8" x 69-1/4" x 27-3/8"\***

- 38° - 65° F
- 42 dBA
- PreciseTemp™
- 3-Color electronic touch controls
- 4-level 3-Color LED lighting
- Field-reversible door
- 304-grade stainless steel door
- 142 bottle capacity
- 127 bottle capacity (with display rack)
- Active cooling technology
- Built-in or freestanding
- Vibration dampening system
- Door lock
- Sabbath mode
- 14 full-extension wood racks\*\*
- Zero-clearance concealed door hinge

**Parts & Accessories**

- ZOF-C004 Replacement Carbon Filter
- PRHAN-F001 Pro Handle Kit (1 per kit)

\*Depth of cabinet with door, not including handle

\*\*Includes 1 pre-installed, collapsible 5-bottle display rack allowing it to be used like a standard 10-bottle rack.

Door Finish: 304-grade Stainless Steel + Glass, 304-grade Black Stainless Steel + Glass. Cabinet Finish: Black. Interior Finish: Black  
Warranty: 2 years labor & non-consummable parts, 5 years compressor

Specifications and features may vary. Please refer to the manufacturer's website for the latest updates.

PRESRV™ DUAL ZONE  
WINE COOLERS



**MODEL FINISH SIZE W x H x D**

**DUAL ZONE WINE COOLER**

**PRW24C02CG SS + Glass 23-7/8" x 33-15/16" x 23-3/8"\***

- |  |  |   |
|--|--|---|
| <ul style="list-style-type: none"> <li>• 38° - 65° F (each zone)</li> <li>• 39 dBA</li> <li>• 3-Color electronic touch controls</li> <li>• Vibration dampening system</li> <li>• Sabbath mode</li> <li>• ENERGY STAR® certified</li> </ul> | <ul style="list-style-type: none"> <li>• 45 bottle capacity</li> <li>• 5 full-extension wood racks</li> <li>• Large diameter bottle rack</li> <li>• Field-reversible door</li> <li>• Zero-clearance concealed door hinge</li> <li>• Door lock</li> </ul> | <ul style="list-style-type: none"> <li>• PreciseTemp™</li> <li>• Active cooling technology</li> <li>• Built-in or freestanding</li> <li>• 4-level 3-color LED lighting</li> <li>• 304-grade stainless steel door</li> <li>• Thermal seal</li> </ul> |
|--|--|---|

**Parts & Accessories**

- |            |  |
|------------|--|
| ZOF-C004   | Replacement Carbon Filter                          |
| PRHAN-C102 | Contemporary Handle Kit – Brushed Gold (1 per kit) |
| PRHAN-C104 | Contemporary Handle Kit – Matte Black (1 per kit)  |
| PRHAN-C001 | Pro Handle Kit – Stainless Steel (1 per kit)       |

\*Depth of cabinet with door, not including handle



**DUAL ZONE WINE COOLER - BLACK STAINLESS STEEL**

**PRW24C02CB SG BLK SS + Glass 23-7/8" x 33-7/8" x 23-5/8"\***

- |   |   |  |
|---|---|--|
| <ul style="list-style-type: none"> <li>• 38° - 65° F (each zone)</li> <li>• 39 dBA</li> <li>• 3-Color electronic touch controls</li> <li>• Built-in or freestanding</li> <li>• Field-reversible door</li> <li>• ENERGY STAR® certified</li> </ul> | <ul style="list-style-type: none"> <li>• 45 bottle capacity</li> <li>• 5 full-extension wood racks</li> <li>• Large diameter bottle rack</li> <li>• 4-level 3-color LED lighting</li> <li>• Zero-clearance concealed door hinge</li> <li>• Door lock</li> </ul> | <ul style="list-style-type: none"> <li>• PreciseTemp™</li> <li>• Active cooling technology</li> <li>• Vibration dampening system</li> <li>• Sabbath mode</li> <li>• 304-grade black stainless steel</li> <li>• Thermal seal</li> </ul> |
|---|---|--|

**Parts & Accessories**

- |            |  |
|------------|--|
| ZOF-C004   | Replacement Carbon Filter                          |
| PRHAN-C102 | Contemporary Handle Kit – Brushed Gold (1 per kit) |
| PRHAN-C104 | Contemporary Handle Kit – Matte Black (1 per kit)  |

\*Depth of cabinet with door, not including handle



Shown with wood panel and optional matte black handle



**DUAL ZONE WINE COOLER - PANEL READY (HANDLE NOT INCLUDED)**

**PRW24C02CPG PR + Glass 23-7/8" x 33-7/8" x 23-3/4"\***

- |  |  |   |
|--|--|---|
| <ul style="list-style-type: none"> <li>• 38° - 65° F (each zone)</li> <li>• 39 dBA</li> <li>• 3-Color electronic touch controls</li> <li>• Built-in or freestanding</li> <li>• Field-reversible door</li> <li>• Door lock</li> </ul> | <ul style="list-style-type: none"> <li>• 45 bottle capacity</li> <li>• 5 full-extension wood racks</li> <li>• Large diameter bottle rack</li> <li>• 4-level 3-color LED lighting</li> <li>• Zero-clearance door hinge</li> </ul> | <ul style="list-style-type: none"> <li>• PreciseTemp™</li> <li>• Active cooling technology</li> <li>• Vibration dampening system</li> <li>• Sabbath mode</li> <li>• ENERGY STAR® certified</li> <li>• Thermal seal</li> </ul> |
|--|--|---|

**Parts & Accessories**

- |            |   |
|------------|---|
| ZOF-C004   | Replacement Carbon Filter                             |
| PRHAN-C101 | Contemporary Handle Kit – Stainless Steel (1 per kit) |
| PRHAN-C102 | Contemporary Handle Kit – Brushed Gold (1 per kit)    |
| PRHAN-C104 | Contemporary Handle Kit – Matte Black (1 per kit)     |
| PRHAN-C001 | Pro Handle Kit – Stainless Steel (1 per kit)          |
| PRPNLC24A  | Solid Panel Ready Door                                |

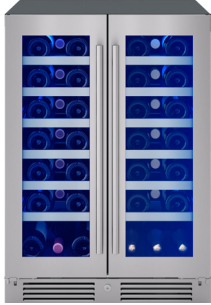
\*Depth dimension based on 3/4" thick panel, not including handle (compatible with 5/8" or 3/4" panel thickness)

Door Finish: 304-grade Stainless Steel + Glass, 304-grade Black Stainless Steel + Glass. Cabinet Finish: Black. Interior Finish: Black  
Warranty: 2 years labor & non-consumable parts, 5 years compressor

Specifications and features may vary. Please refer to the manufacturer's website for the latest updates.



PRESRV™ DUAL ZONE  
WINE COOLERS



**MODEL FINISH SIZE W x H x D**

**FRENCH DOOR DUAL ZONE WINE COOLER**

**PRW24C32CG SS + Glass 23-7/8" x 33-7/8" x 23-3/8"\***

- |                                     |                                       |                              |
|-------------------------------------|---------------------------------------|------------------------------|
| • 38° - 65° F (each zone)           | • 21 bottle capacity (each side)      | • PreciseTemp™               |
| • 38 dBA                            | • 12 full-extension wood racks        | • Active cooling technology  |
| • 3-Color electronic touch controls | • Dimmable 3-color LED lighting       | • Vibration dampening system |
| • Built-in or freestanding          | • Zero-clearance concealed door hinge | • Sabbath mode               |
| • 304-grade stainless steel door    | • ENERGY STAR® certified              | • Door lock                  |

**Parts & Accessories**

- |              |  |
|--------------|--|
| ZOF-C004     | Replacement Carbon Filter                          |
| PRHAN-C102** | Contemporary Handle Kit – Brushed Gold (1 per kit) |
| PRHAN-C104** | Contemporary Handle Kit – Matte Black (1 per kit)  |
| PRHAN-C002   | Pro Handle Kit – Stainless Steel (2 per kit)       |

\*Depth of cabinet with door, not including handle  
\*\*1 handle per kit, 2 kits required



**DUAL ZONE PRO WINE COOLER**

**PRPW24C02AG SS + Glass 23-7/8" x 33-7/8" x 23-5/8"\***

- |                              |                               |                                  |
|------------------------------|-------------------------------|----------------------------------|
| • 40° - 65° F (each zone)    | • 45 bottle capacity          | • PreciseTemp™                   |
| • 39 dBA                     | • 5 full-extension wood racks | • Active cooling technology      |
| • Capacitive touch controls  | • Large diameter bottle rack  | • Built-in or freestanding       |
| • Vibration dampening system | • Field-reversible door       | • 3-color LED lighting           |
| • Sabbath mode               | • Zero-clearance door hinge   | • 304-grade stainless steel door |
| • Door lock                  |                               |                                  |

**Parts & Accessories**

- |          |                           |
|----------|---------------------------|
| ZOF-C004 | Replacement Carbon Filter |
|----------|---------------------------|

\*Depth of cabinet with door, not including handle



**DUAL ZONE WINE COOLER - ADA**

**PRW24C02AG-ADA SS + Glass 23-7/8" x 31-3/4" x 23-3/16"\***

- |                             |                                  |                              |
|-----------------------------|----------------------------------|------------------------------|
| • 40° - 65° F               | • 37 bottle capacity             | • Built-in or freestanding   |
| • 40 dBA                    | • 4 full-extension wood racks    | • PreciseTemp™               |
| • Capacitive touch controls | • Large diameter bottle rack     | • Active cooling technology  |
| • Field-reversible door     | • 304-grade stainless steel door | • Vibration dampening system |
| • 3-color LED lighting      | • Zero-clearance door hinge      | • Sabbath mode               |
| • Door lock                 |                                  |                              |

**Parts & Accessories**

- |            |  |
|------------|--|
| ZOF-C004   | Replacement Carbon Filter                          |
| PRHAN-C102 | Contemporary Handle Kit – Brushed Gold (1 per kit) |
| PRHAN-C104 | Contemporary Handle Kit – Matte Black (1 per kit)  |
| PRHAN-C001 | Pro Handle Kit – Stainless Steel (1 per kit)       |

\*Depth of cabinet with door, not including handle

Door Finish: 304-grade Stainless Steel + Glass, 304-grade Black Stainless Steel + Glass. Cabinet Finish: Black. Interior Finish: Black  
Warranty: 2 years labor & non-consumable parts, 5 years compressor

Specifications and features may vary. Please refer to the manufacturer's website for the latest updates.

PRESRV™ DUAL ZONE  
WINE COOLERS



**MODEL FINISH SIZE W x H x D**

**DUAL ZONE FULL SIZE WINE COOLER**

**PRW24F02CG SS + Glass 23-7/8" x 69-1/4" x 27-3/8"\***

- 38° - 65° F (each zone)
- 42 dBA
- 4-level 3-color LED lighting
- 3-Color electronic touch controls
- Built-in or freestanding
- Field-reversible door
- 132 bottle capacity
- PreciseTemp™
- Active cooling technology
- Vibration dampening system
- 304-grade stainless steel door
- Sabbath mode
- 13 full-extension black wood racks
- Zero-clearance concealed door hinge
- Door lock
- Thermal seal

**Parts & Accessories**

ZOF-C004 Replacement Carbon Filter  
 PRHAN-F001 Pro Handle Kit (1 per kit)  
 PRDISP-F001 5 Bottle Display Rack

\*Depth of cabinet with door, not including handle



**DID YOU KNOW** The 5 bottle display rack can display 5 of your favorite wine bottles while storing an additional 9 bottles stacked behind. If you choose not to display any bottles you can collapse the entire rack for full bottle capacity.



**FULL SIZE PANEL READY DUAL ZONE WINE COOLER**

**PRW24F02CPG PR + Glass 23 7/8" x 69-1/4" x 27-3/8"\***

- 38° - 65° F (each zone)
- 42 dBA
- 4-level 3-color LED lighting
- 3-Color electronic touch controls
- Built-in or freestanding
- Field-reversible door
- 132 bottle capacity
- PreciseTemp™
- Active cooling technology
- Vibration dampening system
- Zero-clearance Hettich articulating door hinge
- Sabbath mode
- 13 full-extension black wood racks
- Door lock

**Parts & Accessories**

ZOF-C004 Replacement Carbon Filter  
 PRHAN-F001 Pro Handle Kit (1 per kit)

\*Depth of cabinet with door, not including handle

Door Finish: 304-grade Stainless Steel + Glass, 304-grade Black Stainless Steel + Glass. Cabinet Finish: Black. Interior Finish: Black  
 Warranty: 2 years labor & non-consummable parts, 5 years compressor

Specifications and features may vary. Please refer to the manufacturer's website for the latest updates.

PRESRV™ COMBINATION  
WINE & BEVERAGE COOLERS



**MODEL FINISH SIZE W x H x D**

**FRENCH DOOR DUAL ZONE WINE & BEVERAGE COOLER**

**PRWB24C32CG S + Glass 23-7/8" x 33-7/8" x 23-3/8"\***

- 38° - 65° F (wine side)
- 34° - 65° F (beverage side)
- 38 dBA
- 3-Color electronic touch controls
- Built-in or freestanding
- Door lock
- 21 bottles, 64 12oz can capacity
- 6 full-extension wood racks
- 3 adjustable glass shelves
- Dimmable 3-color LED lighting
- Zero-clearance concealed door hinge
- PreciseTemp™
- Active cooling technology
- Vibration dampening system
- Sabbath mode
- 304-grade stainless steel door

**Parts & Accessories**

- ZOF-C004 Replacement Carbon Filter
- PRHAN-C102\*\* Contemporary Handle Kit – Brushed Gold (1 per kit)
- PRHAN-C104\*\* Contemporary Handle Kit – Matte Black (1 per kit)
- PRHAN-C002 Pro Handle Kit – Stainless Steel (2 per kit)

\*Depth of cabinet with door, not including handle  
\*\*1 handle per kit, 2 kits required



**DUAL ZONE FULL SIZE WINE & BEVERAGE COOLER**

**PRWB24F02BG SS + Glass 23-7/8" x 69-1/4" x 27-3/8"\***

- 38° - 65° F (upper zone)
- 34° - 65° F (lower zone)
- 40 dBA
- 3-Color electronic touch controls
- Built-in or freestanding
- 4-level 3-color LED lighting
- Field-reversible door
- 54 750ml bottles, 112 12oz bottles, 49 12-oz cans capacity
- 5 full-extension black wood racks
- 2 adjustable glass shelves
- 1 full-extension stainless steel rollout bin
- Zero-clearance concealed door hinge
- 304-grade stainless steel door
- Inverter compressor
- PreciseTemp™
- Active cooling technology
- Vibration dampening system
- Sabbath mode
- Door lock

**Parts & Accessories**

- ZOF-C004 Replacement Carbon Filter
- PRHAN-F001 Pro Handle Kit (1 per kit)
- PRDISP-F001 5 Bottle Display Rack

\*Depth of cabinet with door, not including handle



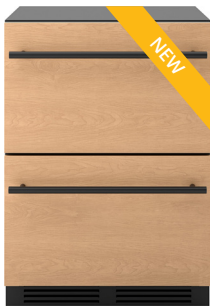
**DID YOU KNOW** A full-extension stainless steel rollout bin comes standard on the Full Size Beverage and Full Size Wine & Beverage Coolers. It's perfect for the days, or nights, you entertain or just want a beverage conveniently within reach. It also provides quick and accessible access to garnishes for that specialty cocktail.

**DID YOU KNOW** The Full Size Beverage Coolers and Full Size Wine & Beverage Cooler come standard with an inverter compressor so they can now achieve an ultra-low temperature of 34°F. An inverter compressor uses a BLDC motor to achieve lower temperatures while using less energy and performing more quietly than a fixed speed compressor.

Door Finish: 304-grade Stainless Steel + Glass, 304-grade Black Stainless Steel + Glass. Cabinet Finish: Black. Interior Finish: Black  
Warranty: 2 years labor & non-consumable parts, 5 years compressor

Specifications and features may vary. Please refer to the manufacturer's website for the latest updates.

PRESRV™  
REFRIGERATOR DRAWERS



Shown with wood panel and optional matte black handle



**MODEL FINISH SIZE W x H x D**

**SINGLE ZONE REFRIGERATOR DRAWERS**

**PRRD24C1AS SS 23 7/8" x 33-7/8" x 24\*\***

- 33° - 65° F
- 39 dBA
- 3-Color electronic touch controls
- 3-color LED lighting
- Door open alarm
- Sabbath mode
- Quick Chill
- 5.4 cu/ft capacity
- 304-grade stainless steel drawers
- White interior
- Soft-close drawers
- Full-extension drawers
- ENERGY STAR® certified
- Preset temperature modes: produce (39°F), beverage (34°F), wine (50°F)
- Built-in with anti-tip bracket
- Adjustable bar dividers
- Transparent organizer tray
- PreciseTemp™
- Active cooling technology
- Contemporary, stainless steel handles

\*Depth of cabinet with door, not including handle

**DUAL ZONE REFRIGERATOR DRAWERS**

**PRRD24C2AS SS 23 7/8" x 33-7/8" x 24\*\***

- 33° - 65° F (each zone)
- 38 dBA
- 3-Color electronic touch controls
- 3-color LED lighting
- Door open alarm
- Sabbath mode
- Quick Chill
- Removable silicone mats
- 5.1 cu/ft capacity
- 304-grade stainless steel drawers
- 304-grade stainless steel interior
- Soft-close drawers
- Full-extension drawers
- ENERGY STAR® certified
- Preset temperature modes: produce (39°F), beverage (34°F), wine (50°F)
- Built-in with anti-tip bracket
- Adjustable bar dividers
- Transparent organizer tray
- PreciseTemp™
- Active cooling technology
- Pro, stainless steel handles

\*Depth of cabinet with door, not including handle

**PANEL READY DUAL ZONE REFRIGERATOR DRAWERS**

**PRRD24C2AP PR 23 7/8" x 33-7/8" x 24\*\***

- 33° - 65° F (each zone)
- 38 dBA
- 3-Color electronic touch controls
- 3-color LED lighting
- Door open alarm
- Sabbath mode
- Quick Chill
- 5.1 cu/ft capacity
- 304-grade stainless steel interior
- Removable silicone mats
- Soft-close drawers
- Full-extension drawers
- ENERGY STAR® certified
- Preset temperature modes: produce (39°F), beverage (34°F), wine (50°F)
- Built-in with anti-tip bracket
- Adjustable bar dividers
- Transparent organizer tray
- PreciseTemp™
- Active cooling technology

**Parts & Accessories**

- PRHAN-C101\*\* Contemporary Handle Kit, Stainless Steel (1 per kit)
- PRHAN-C102\*\* Contemporary Handle Kit, Brushed Gold (1 per kit)
- PRHAN-C104\*\* Contemporary Handle Kit, Matte Black (1 per kit)
- PRHAN-C001\*\* Pro Handle Kit, Stainless Steel (1 per kit)

\*Depth of cabinet with 3/4" thick overlay panel

\*\*1 handle per kit, 2 kits required

**OUTDOOR DUAL ZONE REFRIGERATOR DRAWERS**

**PRRD24C2AS-OD SS 23 7/8" x 33-7/8" x 24\*\***

- 33° - 65° F (each zone)
- 38 dBA
- 3-Color electronic touch controls
- 3-color LED lighting
- Door open alarm
- Sabbath mode
- Quick Chill
- Removable silicone mats
- 5.1 cu/ft capacity
- 304-grade stainless steel drawers
- 304-grade stainless steel interior
- Soft-close drawers
- Full-extension drawers
- ENERGY STAR® certified
- Preset temperature modes: produce (39°F), beverage (34°F), wine (50°F)
- Built-in with anti-tip bracket
- Adjustable bar dividers
- Transparent organizer tray
- PreciseTemp™
- Active cooling technology
- Pro, stainless steel handles

\*Depth of cabinet with door, not including handle

Door Finish: 304-grade Stainless Steel, Panel-Ready. Cabinet Finish: Black (for all except Outdoor model). 304-grade Stainless Steel for PRRD24C2AS-OD. Interior Finish: Black. Drawer Finish: White (PRRD24C1AS), 304-grade Stainless Steel (PRRD24C2AS, PRRD24C2AP, PRRD24C2AS-OD) Warranty: 2 years labor & non-consumable parts, 5 years compressor

Specifications and features may vary. Please refer to the manufacturer's website for the latest updates.

PRESRV™  
KEGERATORS



shown with PRKFK-01SSC,  
single tap kit

MODEL	FINISH	SIZE W x H x D
<b>INDOOR KEGERATOR &amp; BEVERAGE COOLER - TAP SOLD SEPARATELY</b>		
PRKB24C01AG	S + Glass	23-7/8" x 33-7/8" x 23-1/2"*

- 32° - 65° F
- 42 dBA
- Capacitive touch controls
- Field-reversible door
- 3-color LED lighting
- Pro-style, stainless steel handle
- Built-in installation kit
- Multiple keg configurations
- 2 adjustable glass shelves
- Stainless steel drip tray
- Zero-clearance door hinge
- ENERGY STAR® certified
- 304-grade SS door w/ display window
- Tap options: single, double, triple
- Built-in or freestanding
- PreciseTemp™
- Active cooling technology
- Beer line cooling system
- Sabbath mode
- Door lock

**Parts & Accessories**

- PRKFK-01SSC Single Tap Kit, Stainless Steel, with CO2 Tank
- PRKFK-02SSC Double Tap Kit, Stainless Steel, with CO2 Tank
- PRKFK-03SSC Triple Tap Kit, Stainless Steel, with CO2 Tank
- PRKRAIL-0124SS Drink Guardrail, Stainless Steel
- PRKSLF-02BG Beverage Cooler Kit (2 shelves per kit)
- PRCAST-C001 Casters, set of 4
- PRKCLN-001 Beer Line Cleaning Kit
- PRHAN-C101 Contemporary Handle Kit, Stainless Steel (1 per kit)
- PRHAN-C102 Contemporary Handle Kit, Brushed Gold (1 per kit)
- PRHAN-C104 Contemporary Handle Kit, Matte Black (1 per kit)
- PRPNLC24AKIT Solid Panel Ready Door with Kickplate

\*Depth of cabinet with door, not including handle



shown with PRKFK-01SSC,  
single tap kit

MODEL	FINISH	SIZE W x H x D
<b>OUTDOOR KEGERATOR &amp; BEVERAGE COOLER - TAP SOLD SEPARATELY</b>		
PRKB24C01AS-OD	SS	23-7/8" x 33-7/8" x 23-1/2"*

- 32° - 65° F
- 42 dBA
- Capacitive touch controls
- Field-reversible door
- White LED lighting
- Pro-style, stainless steel handle
- Built-in installation kit
- Multiple keg configurations
- 2 adjustable glass shelves
- Stainless steel drip tray
- Zero-clearance door hinge
- ENERGY STAR® certified
- 304-grade stainless steel body
- Tap options: single, double, triple
- Built-in or freestanding
- PreciseTemp™
- Active cooling technology
- Beer line cooling system
- Sabbath mode
- Door lock

**Parts & Accessories**

- PRKFK-01SSC Single Tap Kit, Stainless Steel, with CO2 Tank
- PRKFK-02SSC Double Tap Kit, Stainless Steel, with CO2 Tank
- PRKFK-03SSC Triple Tap Kit, Stainless Steel, with CO2 Tank
- PRKRAIL-0124SS Drink Guardrail, Stainless Steel
- PRKSLF-02BG Beverage Cooler Kit (2 shelves per kit)
- PRCAST-C001 Casters, set of 4
- PRKCLN-001 Beer Line Cleaning Kit
- PRHAN-C101 Contemporary Handle Kit, Stainless Steel (1 per kit)
- PRHAN-C102 Contemporary Handle Kit, Brushed Gold (1 per kit)
- PRHAN-C104 Contemporary Handle Kit, Matte Black (1 per kit)
- PRPNLC24AKIT Solid Panel Ready Door with Kickplate

\*Depth of cabinet with door, not including handle

**Multiple Keg Configurations:**



1 sixth or slim quarter barrel keg with beverage shelving



1 half barrel keg



2 sixth barrel kegs or 1 sixth and 1 slim quarter barrel kegs



3 sixth barrel kegs



Converted to full beverage cooler

Door Finish: 304-grade Stainless Steel + Glass, 304-grade Stainless Steel. Cabinet Finish: Black, 304-grade Stainless Steel. Interior Finish: Black with SS Base Plate.

Warranty: 2 years labor & non-consumable parts, 5 years compressor

Specifications and features may vary. Please refer to the manufacturer's website for the latest updates.

PRESRV™  
OUTDOOR REFRIGERATOR /  
BEVERAGE COOLER



**MODEL FINISH SIZE W x H x D**

**OUTDOOR REFRIGERATOR**

**PRR24C01AS-OD SS 23-7/8" x 33-7/8" x 23-5/8"\***

- 34° - 50° F
- Capacitive touch controls
- Field-reversible door
- White LED lighting
- 304-grade stainless steel body
- White interior
- 5.6 cu/ft capacity
- 3 adjustable glass shelves
- 5 adjustable, in-door shelves
- Zero-clearance door hinge
- Door lock
- Built-in or freestanding
- ENERGY STAR® certified
- PreciseTemp™
- Active cooling technology
- Sabbath mode
- Pro-style, stainless steel handle

**Parts & Accessories**

PRCAST-C001 Casters (set of 4)  
ZOF-C014 Replacement Carbon Filter

\*Depth of cabinet with door, not including handle



**SINGLE ZONE BEVERAGE COOLER - OUTDOOR**

**PRB24C01AS-OD SS 23-7/8" x 33-7/8" x 23-1/2"\***

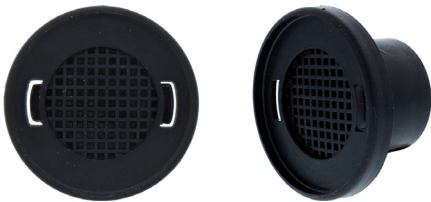
- 34° - 50° F
- 39 dBA
- Capacitive touch controls
- Field-reversible door
- White LED lighting
- Door lock
- Black interior
- 136 12oz can capacity
- 1 full-extension wire rack
- 2 adjustable glass shelves
- 304-grade stainless steel body
- Zero-clearance door hinge
- ENERGY STAR® certified
- Built-in or freestanding
- PreciseTemp™
- Active cooling technology
- Vibration dampening system
- Sabbath mode
- Optional casters

**Parts & Accessories**

ZOF-C004 Replacement Carbon Filter  
PRHAN-C101 Contemporary Handle Kit – Stainless Steel (1 per kit)  
PRHAN-C102 Contemporary Handle Kit – Brushed Gold (1 per kit)  
PRHAN-C104 Contemporary Handle Kit – Matte Black (1 per kit)  
PRCAST-C001 Casters (set of 4)  
PRPNLC24AKIT Solid Panel Ready Door with Kickplate

\*Depth of cabinet with door, not including handle

**Parts & Accessories**



ZOF-C004: replacement carbon filter



ZOF-C014: replacement carbon filter for outdoor refrigerator; PRR24C01AS-OD



PRCAST-C001: casters for outdoor beverage cooler, indoor/outdoor kegerator and outdoor refrigerator

Door Finish: 304-grade Stainless Steel. Cabinet Finish: 304-grade Stainless Steel. Interior Finish: White, Black.  
Warranty: 2 years labor & non-consumable parts, 5 years compressor

Specifications and features may vary. Please refer to the manufacturer's website for the latest updates.

WARRANTY

---

**2 years labor & non-consummable parts, 5 years compressor****Two Years Limited Warranty for Labour:**

For two years from the date of your original purchase of the Products, we will provide, free of charge, the labour cost associated with repairing the Products or parts to replace those that failed due to manufacturing defects subject to the exclusions and limitations stated in the Warranty statement. After the second year from the date of your original purchase, you are responsible for all labour costs associated with this warranty.

**Two Years Limited Warranty for Parts:**

For two years from the date of your original purchase of the Products, we will provide, free of charge, Products or parts (including LED light bulbs, if applicable) to replace those that failed due to manufacturing defects subject to the exclusions and limitations stated in the Warranty statement. We may choose, in our sole discretion, to repair or replace parts before we elect to replace the Products.

**Five Years Limited Warranty for Compressor:**

For five years from the date of your original purchase of the Products, we will provide, free of charge, compressor parts to replace those that failed due to manufacturing defects subject to the exclusions and limitations stated in the Warranty statement. We may choose, in our sole discretion, to repair or replace parts before we elect to replace the Products.

# PRODUCT GUIDE 2024

## **ZEPHYR** Presrv™

T 800 361 0799 F 450 682 7943

[www.distinctive-online.com](http://www.distinctive-online.com) [info@distinctive-online.com](mailto:info@distinctive-online.com)

### HEAD OFFICE & WAREHOUSE

2025 Cunard Street  
Laval QC H7S 2N1

### WESTERN CANADA WAREHOUSE

NFI 1020 Derwent Way  
Delta, BC V3M 5R1

### PARTS & SERVICE

[service@distinctive-online.com](mailto:service@distinctive-online.com)  
800 561 7265

### ORDER DESK

[orderdesk@distinctive-online.com](mailto:orderdesk@distinctive-online.com)