



COYOTE
Outdoor Living

PRODUCT GUIDE **2023**

UPDATED JULY 2023

Coyote is a **Distinctive** brand

Coyote Outdoor Living understands the importance of delivering durable products that last a lifetime. All of our grills are built with premium grade 304 stainless steel throughout and have features such as double-walled stainless steel hoods, cast stainless steel burners and zinc nickel alloy knobs. Our specially designed firebox combined with our professional burner system delivers a perfect, even cooking experience every time.

Coyote Outdoor Living products are designed with a strict attention to consistency and aesthetics. Having a tremendous range of products to allow for the most custom of outdoor spaces loses appeal if the products fail to tie the space together with a consistent design aesthetic.



All of our grills feature:

- Complete 304 stainless steel construction, including:
 - Cast Pro-Style stainless steel Infinity Burners™, grates and component parts
 - Double walled, stainless steel hood
 - Continuous weld on the grill box with seamless edges
- Interior grill lighting
- Stainless steel Heat Control Grids™ “C-Series”
- Ceramic briquette Heat Control Grids™ “S-Series”
- Limited lifetime warranty on burners and stainless steel exterior
- Independent burner ignition system

Specifications and features may vary. Please refer to the manufacturer's website for the latest updates.

Front Back Recycle/Trash Combo

NEW IN 2023!

A stainless steel outdoor island recycle and trash bin is a durable and stylish solution for keeping your outdoor living space clean and organized.

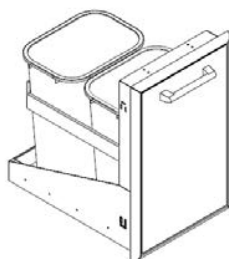
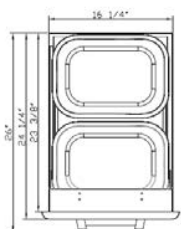
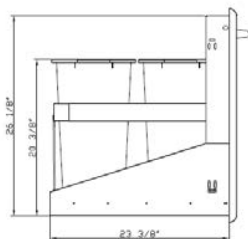
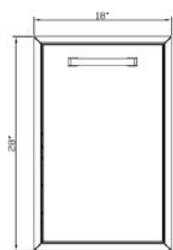
Made from high-quality stainless steel, these combo bins are designed to withstand the harsh outdoor elements while keeping pests and unwanted animals out.

A sleek and modern look that can complement any outdoor decor style, making it a popular choice for patios, decks, and outdoor kitchens.

With the easy-to-use full extension rollers and spacious interiors, the combo bins provide a convenient and hygienic way to dispose of waste, helping to keep your outdoor space tidy and welcoming.



CFBTRC



Features

- 304 Stainless Steel Construction
- Pro Style Stainless Steel Handle
- Full Extension Drawer On Rollers For Smooth Operation
- Beveled Trim
- Two 13 Gallon Recycle & Trash Bins Included

Dimensions

- Overall: 18" W x 24 1/4" D x 28" H
- Cutout: 16 1/4" W x 23 3/4" D x 26 1/4" H

Specifications and features may vary. Please refer to the manufacturer's website for the latest updates.

Farmhouse Sink

NEW IN 2023!

A stainless steel farmhouse sink is a popular and functional outdoor kitchen fixture that features a deep basin and a front apron that extends beyond the edge of the counter-top.

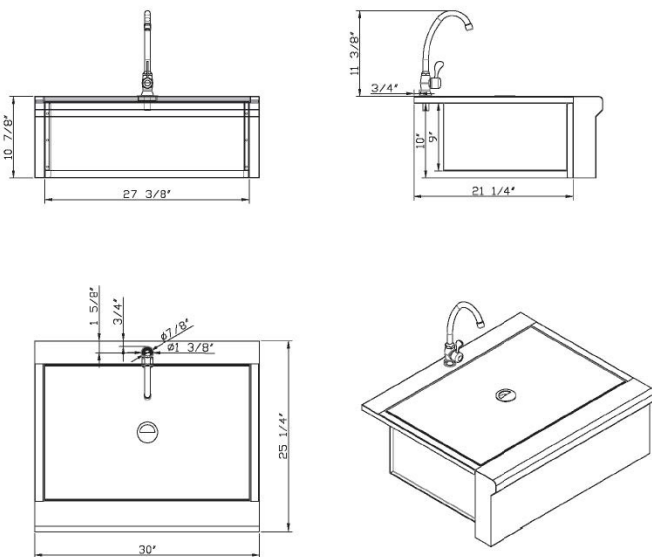
Made of durable and long-lasting stainless steel, these sinks are resistant to stains, corrosion, and rust.

A sleek and modern look to any outdoor kitchen while providing ample space for food preparation and washing large pots and pans.

With versatility, durability, and aesthetic appeal, stainless steel farmhouse sinks have become a top choice for many homeowners and designers alike.



CFHSINK



Features

- Farmhouse Apron Front Style
- 304 Stainless Steel Construction
- A Deep Basin That Provides Ample Space For Washing Large Pots & Pans or Preparing Food
- Drain, Faucet, Strainer & Stainless Steel Cover Included
- Simple Design & Construction Make It
- Easy To Clean & Maintain

Dimensions

- Overall: 30" W x 25 1/4" D x 10 7/8" H
- Cutout: 27 1/2" W x 20 5/8" D x 10" H

Specifications and features may vary. Please refer to the manufacturer's website for the latest updates.

Coyote Gray Covers

NEW IN 2023!

A vinyl outdoor grill cover is a durable and affordable option for protecting your grill from the elements.

Made from high-quality vinyl material, the covers are designed to withstand harsh outdoor conditions like rain, snow, wind, and UV rays. They are water-resistant and help prevent moisture and debris from entering the grill, which can cause rust and damage over time.

The freestanding grill covers come with a zipper to securely fit. They are easy to clean and maintain, making them a popular choice for grill owners who want to keep their grills in good condition with minimal effort.

Whether you are looking to protect your grill during the off-season or just need to cover it up between uses, a vinyl outdoor grill cover is a practical and affordable solution that can help extend the life of your grill.



CCVR-G

Features

- Light Grey With White Logo & Trim
- Light Weight For Easy Install & Removal
- Stronger Resistance To Color Fading
- Cart Models Now Have A Zipper For Secure Fit
- Easy To Clean & Maintain

Models

ASADO-CVRG	CCVR42-BI
CCVR28P-BIG	CCVR42-CTG
CCVR36P-BIG	CCVR50-BIG
CCVR2-BIG	CCVR50-CTG
CCVR2-CTG	CCVRDB-BIG
CCVR30-BIG	CCVRSB-BIG
CCVR30-CTG	CCVREL-BIG
CCVR36-BIG	CCVRFT-BIG
CCVR36-CTG	CCVRFT-CTG
CCVR3-BIG	CCVRPB-BIGG
CCVR3-CTG	CCVRPG-CTG

Specifications and features may vary. Please refer to the manufacturer's website for the latest updates.

Table of contents

C-Series Grills	7-8
S-Series Grills	9-10
Pellet Grills	11
Charcoal & Hybrid Grills	12
Smoker	13
Portable Grills	14
Specialty Burners & Side Burners	15
Storage	16-17
Refrigeration & Refreshments	18-19
Ventilation Hoods & Liners	20
Product & Installation Specifications	21-22
Warranty	23

ITEM

APPLIANCE

CART / ACCESSORY

Specifications and features may vary. Please refer to the manufacturer's website for the latest updates.

C-Series Grills



C1C28



C1C28-FS + C1CSB



C2C34

C1C28 - 28" BUILT-IN & ON CART GRILL

C1C28LP	28" Grill Built-in; LP
C1C28NG	28" Grill Built-in; NG
C1C28LP-FS	28" Grill on Cart; LP (Pull out for 20 lb propane tank)
C1C28NG-FS	28" Grill on Cart; NG (Pull out for 20 lb propane tank)

- Two high performance Coyote Infinity Burners™
- 640 sq. in. cooking area
- Up to 40,000 BTU
- Interior grill lighting
- Stainless steel heat control grids
- 304 stainless steel

ACCESSORIES

CSIGRATE15	Signature Laser Cut Grates, 3 pk	C128LP2NG	C1C28 Conversion Kit LP to NG
CCHTRAY15	Charcoal Tray, 1 pc	C128NG2LP	C1C28 Conversion Kit NG to LP
CBRIQ28	28" Heat Control Grid (2 pc set)	CLPREG	LP Regulator
CCVR2-BI	28" Built-in Grill Cover, Black	CNGREG	Natural Gas Regulator
CCVR2-BIG	28" Built-in Grill Cover, Gray	CINLNREG	In-Line Convertible LP/NG Regulator
CCVR2-CT	28" Grill w/ Cart Cover, Black	C1WG28	Wind Guard for 28"
CCVR2-CTG	28" Grill w/ Cart Cover, Gray	CJAKTCC2	Insulated Jacket for 28"
C1CSBLP	Single Side Burner for Carts; LP	CROTC2	Rotisserie Kit for 28"
C1CSBNG	Single Side Burner for Carts; NG	CSBX	Smoker Box
		C1GRDL	Heavy Duty Drop-In Griddle

C2C34 - 34" BUILT-IN GRILL

C2C34LP	34" Grill Built-in; LP
C2C34NG	34" Grill Built-in; NG

- Three high performance Coyote Infinity Burners™
- 780 sq. in. cooking area
- Up to 60,000 BTU
- Interior grill lighting
- Stainless steel heat control grids
- 304 stainless steel

ACCESSORIES

CSIGRATE12	Signature Laser Cut Grates, 3 pk	C2LP2NG	C-Series & S-Series Conversion Kit LP to NG
CCHTRAY12	Charcoal Tray, 1 pc	C2NG2LP	C-Series & S-Series Conversion Kit NG to LP
C1GRDL	Heavy Duty Drop-In Griddle	CLPREG	LP Regulator
CSBX	Smoker Box	CNGREG	Natural Gas Regulator
C1C34CT	34" Cart	CINLNREG	In-Line Convertible LP/NG Regulator
CCVR3-BI	34" Built-in Grill Cover, Black	CWG34	Wind Guard for 34"
CCVR3-BIG	34" Built-in Grill Cover, Gray	CBRIQ34	34" Ceramic Control Grid (3 pc set)
CCVR3-CT	34" Grill w/ Cart Cover, Black	CJAKTCC3	Insulated Jacket for 34"
CCVR3-CTG	34" Grill w/ Cart Cover, Gray	CROTC3	Rotisserie Kit for 34"
C1CSBLP	Single Side Burner for Carts; LP		
C1CSBNG	Single Side Burner for Carts; NG		

Specifications and features may vary. Please refer to the manufacturer's website for the latest updates.

C-Series Grills



C2C36 + C1S36CT



C2C36 - 36" BUILT-IN GRILL

C2C36LP	28" Grill Built-in; LP
C2C36NG	28" Grill Built-in; NG

- Four high performance Coyote Infinity Burners™
- 875 sq. in. cooking area
- Up to 80,000 BTU
- Interior grill lighting
- Stainless steel heat control grids
- 304 stainless steel

ACCESSORIES

CSIGRATE12	Signature Laser Cut Grates, 3 pk	C2NG2LP	C-Series & S-Series Conversion Kit NG to LP
CCHTRAY12	Charcoal Tray, 1 pc	CLPREG	LP Regulator
CCVR36-BI	36" Built-in Grill Cover, Black	CNGREG	Natural Gas Regulator
CCVR36-BIG	36" Built-in Grill Cover, Gray	CINLNREG	In-Line Convertible LP/NG Regulator
CCVR36-CT	36" Grill w/ Cart Cover, Black	CJAKTCS36	Insulated Jacket for 36"
CCVR36-CTG	36" Grill w/ Cart Cover, Gray	CROT36	Rotisserie Kit for 36"
C1S36CT	36" Cart	C2BRIQ36	36" Heat Control Grid (4 pc set)
C1CSBLP	Single Side Burner for Carts; LP	CSBX	Smoker Box
C1CSBNG	Single Side Burner for Carts; NG	C1GRDL	Heavy Duty Drop-In Griddle
C2LP2NG	C-Series & S-Series Conversion Kit LP to NG	COYVENT	Stainless Steel Island Vent
		CWG36	Wind Guard for 36"

C2C42 - 42" BUILT-IN GRILL

C2C42LP	42" Grill Built-in; LP
C2C42NG	42" Grill Built-in; NG

- Five high performance Coyote Infinity Burners™
- 1275 sq. in. cooking area
- Up to 100,000 BTU
- Interior grill lighting
- Stainless steel heat control grids
- 304 stainless steel

ACCESSORIES

CSIGRATE15	Signature Laser Cut Grates, 3 pk	C2NG2LP	C-Series & S-Series Conversion Kit NG to LP
CCHTRAY15	Charcoal Tray, 1 pc	CLPREG	LP Regulator
C1S42CT	42" Cart	CNGREG	Natural Gas Regulator
CCVR42-BI	42" Built-in Grill Cover, Black	CINLNREG	In-Line Convertible LP/NG Regulator
CCVR42-BIG	42" Built-in Grill Cover, Gray	CJAKTCS42	Insulated Jacket for 42"
CCVR42-CT	42" Grill w/ Cart Cover, Black	CROT42	Rotisserie Kit for 42"
CCVR42-CTG	42" Grill w/ Cart Cover, Gray	C2BRIQ42	42" Heat Control Grid (5 pc set)
C1CSBLP	Single Side Burner for Carts; LP	CSBX	Smoker Box
C1CSBNG	Single Side Burner for Carts; NG	C1GRDL	Heavy Duty Drop-In Griddle
C2LP2NG	C-Series & S-Series Conversion Kit LP to NG	COYVENT	Stainless Steel Island Vent
		CWG42	Wind Guard for 42"

Specifications and features may vary. Please refer to the manufacturer's website for the latest updates.

S-Series Grills



C2SL30LP



C2SL30LP-FS



C2SL36LP

C2SL30 - 30" BUILT-IN & ON CART GRILL

C2SL30LP	30" Grill Built-in LP
C2SL30NG	30" Grill Built-in NG
C2SL30LP-FS	30" Grill on Cart LP
C2SL30NG-FS	30" Grill on Cart NG

- Two high performance Coyote Infinity Burners™
- One infrared rear burner
- One Coyote RapidSear™ infrared burner
- 700 sq. in. cooking area
- Ceramic Briquette Heat Control Grids
- LED illuminated knobs
- Rotisserie kit and smoker box included
- Up to 70,000 BTU
- Interior grill lighting
- Stainless steel heat control grids
- 304 stainless steel
- Integrated wind guard

ACCESSORIES

CCHTRAY12	Charcoal Tray, 1 pc	C2NG2LP	C-Series & S-Series Conversion Kit NG to LP
CCVR30-BI	30" Built-in Grill Cover, Black	CLPREG	LP Regulator
CCVR30-BIG	30" Built-in Grill Cover, Gray	CNGREG	Natural Gas Regulator
CCVR30-CT	30" Grill w/ Cart Cover, Black	CINLNREG	In-Line Convertible LP/NG Regulator
CCVR30-CTG	30" Grill w/ Cart Cover, Gray	CWG30	Wind Guard for 30"
C1CSBLP	Single Side Burner for Carts; LP	CJAKTCS30	Insulated Jacket for 30"
C1CSBNG	Single Side Burner for Carts; NG	CSIGRATE15	Signature Laser Cut Grates, 3 pk
C2LP2NG	C-Series & S-Series Conversion Kit LP to NG	C1GRDL	Heavy Duty Drop-In Griddle
		COYVENT	Stainless Steel Island Vent

C2SL36 - 36" BUILT-IN GRILL

C2SL36LP	36" Grill Built-in; LP
C2SL36NG	36" Grill Built-in; NG

- Three high performance Coyote Infinity Burners™
- One infrared rear burner
- One Coyote RapidSear™ infrared burner
- 875 sq. in. cooking area
- Ceramic Briquette Heat Control Grids
- LED illuminated knobs
- Rotisserie kit and smoker box included
- Up to 90,000 BTU
- Interior grill lighting
- Stainless steel heat control grids
- 304 stainless steel
- Integrated wind guard

ACCESSORIES

CCVR36-BI	36" Built-in Grill Cover, Black	CNGREG	Natural Gas Regulator
CCVR36-BIG	36" Built-in Grill Cover, Gray	CINLNREG	In-Line Convertible LP/NG Regulator
CCVR36-CT	36" Grill w/ Cart Cover, Black	CWG36	Wind Guard for 36"
CCVR36-CTG	36" Grill w/ Cart Cover, Gray	CJAKTCS36	Insulated Jacket for 36"
C1S36CT	36" Cart	CROT36	Rotisserie Kit for 36" (included with grill)
C1CSBLP	Single Side Burner for Carts; LP	CSIGRATE12	Signature Laser Cut Grates, 3 pk
C1CSBNG	Single Side Burner for Carts; NG	CCHTRAY12	Charcoal Tray, 1 pc.
C2LP2NG	C-Series & S-Series Conversion Kit LP to NG	CSBX	Smoker Box
C2NG2LP	C-Series & S-Series Conversion Kit NG to LP	C1GRDL	Heavy Duty Drop-In Griddle
CLPREG	LP Regulator	COYVENT	Stainless Steel Island Vent

Specifications and features may vary. Please refer to the manufacturer's website for the latest updates.

S-Series Grills



C2SL42LP

C2SL42 - 42" BUILT-IN GRILL

C2SL42LP	42" Grill Built-in; LP
C2SL42NG	42" Grill Built-in; NG

- Four high performance Coyote Infinity Burners™
- One infrared rear burner
- One Coyote RapidSear™ infrared burner
- 1275 sq. in. cooking area
- Ceramic Briquette Heat Control Grids
- LED illuminated knobs
- Rotisserie kit and smoker box included
- Up to 110,000 BTU
- Interior grill lighting
- Stainless steel heat control grids
- 304 stainless steel
- Integrated wind guard

ACCESSORIES

C2LP2NG	C-Series & S-Series Conversion Kit LP to NG	CSIGRATE15	Signature Laser Cut Grates, 3 pk
C2NG2LP	C-Series & S-Series Conversion Kit NG to LP	CCHTRAY15	Charcoal Tray, 1 pc.
CLPREG	LP Regulator	CSBX	Smoker Box
CNGREG	Natural Gas Regulator	C1GRDL	Heavy Duty Drop-In Griddle
CINLNREG	In-Line Convertible LP/NG Regulator	COYVENT	Stainless Steel Island Vent
CWG42	Wind Guard for 42"	CCVR42-BI	42" Built-in Grill Cover, Black
CJAKTCS42	Insulated Jacket for 42"	CCVR42-BIG	42" Built-in Grill Cover, Gray
CROT42	Rotisserie Kit for 42" (included with grill)	CCVR42-CT	42" Grill w/ Cart Cover, Black
		CCVR42-CTG	42" Grill w/ Cart Cover, Gray

Flat Top Grill



C1FTG30 - 30" FLAT TOP GRILL

C1FTG30LP	30" Flat Top Grill Built-in; LP
C1FTG30NG	30" Flat Top Grill Built-in; NG

- Two individually and accurately controlled heat zones
- Heavy gauge food grade cooking surface allows for even heating and easy cleaning
- LED light safety feature indicates when gas supply is on or off
- 400 sq. in. cooking area
- Up to 17,000 BTU per burner (2 burners total)
- Complete 304 stainless steel construction
- Includes stainless steel cover for cooking surface
- Removable grease trap easily accessible
- Available as a built-in or free-standing

ACCESSOIRES

C1FTCART	Freestanding cart (sold separately)	CCVRFT-CT	Flat Top Grill w/ Cart Cover, Black
C1FTLP2NG	C1FTG30 Conversion Kit LP to NG	CCVRFT-CTG	Flat Top Grill w/ Cart Cover, Gray
C1FTNG2LP	C1FTG30 Conversion Kit NG to LP	CJAKTCS30	Insulated Jacket for 30"
CCVRFT-BI	Built-in Flat Top Grill Cover, Black		
CCVRFT-BIG	Built-in Flat Top Grill Cover, Gray		

Specifications and features may vary. Please refer to the manufacturer's website for the latest updates.

Pellet Grills



C1P28



C1P28-FS

C1P28 - 28" BUILT-IN & ON CART PELLET GRILL

C1P28	28" Pellet Grill
C1P28-FS	28" Pellet Grill on Cart

- Intuitive digital touch control
- Dual fan, auger & drip tray
- Smart drop™ pellet feed
- Front loading pellet hopper
- Spring assist hood
- Double-walled canopy with gasket
- Versa-Rack™ for multiple cooking surfaces
- 304 Stainless steel
- Interior grill lighting
- Led light for temperature probes
- Laser cut grates
- Built-in timer & wind guard
- 3 food temperature probes included
- Electric power ignition (120V; 5A; 60HZ)
- Individual smoke & sear grate included
- Hopper capacity of 12 lbs
- Temperature range of 175°F - 650°F
- Total Cooking Surface = 800 sq. in.

ACCESSORIES

CCVR28P-BI	28" Pellet Grill Built-In Cover, Black	CCVR2-CT	28" Grill w/ Cart Cover, Black
CCVR28P-BIG	28" Pellet Grill Built-in Cover, Gray	CCVR2-CTG	28" Grill w/ Cart Cover, Gray
		CJAKTC1P28	28" Pellet Grill Insulated Jacket



C1P36



C1P36-FS

C1P36 - 36" BUILT-IN & ON CART PELLET GRILL

C1P36	36" Pellet Grill
C1P36-FS	36" Pellet Grill on Cart

- Intuitive digital touch control
- Dual fan, auger & drip tray
- Smart drop™ pellet feed technology
- Front loading pellet hopper
- Spring assist hood
- Double-walled canopy with gasket
- Versa-Rack™ for multiple cooking surfaces
- 304 Stainless steel
- Interior grill lighting
- Led light for temperature probes
- Laser cut grates
- Built-in timer & wind guard
- 3 food temperature probes included
- Electric power ignition (120V; 5A; 60HZ)
- Individual smoke & sear grate included
- Hopper capacity of 12 lbs
- Temperature range of 175°F - 650°F
- Total Cooking Surface = 1056 sq. in.

ACCESSORIES

CCVR36P-BI	36" Pellet Grill Built-In Cover, Black	CCVR36-CT	36" Grill w/ Cart Cover, Black
CCVR36P-BIG	36" Pellet Grill Built-in Cover, Gray	CCVR36-CTG	36" Grill w/ Cart Cover, Gray
		CJAKTC1P36	36" Pellet Grill Insulated Jacket

Specifications and features may vary. Please refer to the manufacturer's website for the latest updates.

Charcoal & Hybrid Grills



C1HY50

C1HY50 - 50" HYBRID GRILL

C1HY50LP	28" Grill Built-in; LP
C1HY50NG	28" Grill Built-in; NG

Charcoal Grill

- Adjustable fuel tray
- Over 600 sq. in. of grilling surface
- For use with charcoal or wood chips
- Adjustable dampers for controlling air flow

Gas Grill

- 2 high performance Coyote iBurners™
- Over 600 sq. in. of grilling surface
- Up to 40,000 BTU
- Interior lights

ACCESSORIES

CCVR50-BI	CH50 Built-in Grill Cover, Black	CLMP	20lb Hardwood Lump Charcoal
CCVR50-BIG	CH50 Built-in Grill Cover, Gray	CBRIQ50	50" Ceramic Flavorizer (2 pc set)
CCVR50-CT	CH50 Grill w/ Cart Cover, Black	CSBX	Smoker Box
CCVR50-CTG	CH50 Grill w/ Cart, Gray	COYVENT	Stainless Steel Island Vent
C1HY50CT	50" Cart	CLPREG	LP Regulator
C136LP2NG	C1HY50 Conv Kit LP to NG	CNGREG	Natural Gas Regulator
C136NG2LP	C1HY50 Conv Kit NG to LP	CINLNREG	In-Line Convertible LP/NG Regulator
C1GRDL	Heavy Duty Drop-In Griddle		



C1CH36

C1CH36 - 36" DROP-IN CHARCOAL GRILL

C1CH36	Coyote 36" Charcoal Grill
--------	---------------------------

- Adjustable fuel tray
- Fuel tray rests on drawer that pulls out for easy access to charcoal
- Over 875 sq. in. of grilling surface
- For use with charcoal or wood chips
- Adjustable dampers for controlling air flow

ACCESSORIES

CCVR36-BI	36" Built-in Grill Cover, Black	CLMP	20lb Hardwood Lump Charcoal
CCVR36-BIG	36" Built-in Grill Cover, Gray	CSBX	Smoker Box
CCVR36-CT	36" Grill w/ Cart Cover, Black	CROT36	Rotisserie Kit for C1CH36
CCVR36-CTG	36" Grill w/ Cart Cover, Gray	CWG36	Wind Guard for 36"
C1CH36CT	36" Charcoal Cart	COYVENT	Stainless Steel Island Vent
C1GRDL	Heavy Duty Drop-In Griddle		

Specifications and features may vary. Please refer to the manufacturer's website for the latest updates.

Smoker



C1CHCS-FS



C1CHCS + C2UNCT

C1CHCS - ASADO SMOKER

C1CHCS	Asado Smoker Built-in
C1CHCS-FS	Asado Smoker Free-Standing

- Standard Coyote Signature Smoking Grate™ for perfect heat diffusion
- Heat-resistant ceramic construction
- 254 sq. in. of cooking area
- Adjustable venting to maintain precise cooking temperatures
- Smoke, sear, grill option

ACCESSORIES

C1CHCS-CT	Asado Smoker Cart	ASADO-CVR	Asado Cover, Black
C2UNCT	Universal cart for C1PB, C1CHCS, CRC	ASADO-CVRG	Asado Cover, Gray
ASADO-PS	Pizza Stone	ASADO-ACC	Asado Accessory Bundle
ASADO-HD	Asado Heat Deflector	C1SLV	Asado Insert Sleeve
ASADO-CT	Chicken Throne	CLMP	20lb Hardwood Lump Charcoal
ASADO-GG	Grid Grippers		

Specifications and features may vary. Please refer to the manufacturer's website for the latest updates.

Portable Grills



C1EL120SM



C1EL120SM + C1ELCT21

C1EL - ELECTRIC GRILL

C1EL120SM Electric Portable Grill - 120V

- Electric (120V - 1300W - 11A - 60 Hz)
- 156 sq. in. cooking area
- 5,000 hour heating element
- 304 stainless steel
- 550° F maximum temperature
- Cover & 2 Piece Tool Set Included
- Teflon coated cooking surface
- Ceramic flavorizer
- 60 minute safety timer with surge protector
- Removable frame for built-in application

ACCESSORIES

- C1ELCT21 Pedestal Cart for Electric Grill
CCVREL-BIG Electrill Grill Cover, Gray
C2ELISL Electric Grill Island



C1PORTLP

C1PORT - PORTABLE GRILL

C1PORTLP Liquid Propane Portable Grill

- 200 sq.in. cooking area
- 316 marine grade stainless steel
- Signature grate cooking surface
- Can be used with 20lb propane tank or a small propane canister (adapter included)
- Ceramic Heat Control Grid
- One Infinity Burner - Capable of up to 20,000 BTU's
- 700 ° F maximum temperature
- Removable drip tray for easy cleaning
- Dimensions: 13-1/2" (H) x 25" (W) x 16" (D)

ACCESSORIES

- CCVRPG-CT Portable Grill Cover, Black
CCVRPG-CTG Portable Grill Cover, Gray

Specifications and features may vary. Please refer to the manufacturer's website for the latest updates.

Specialty Burners and Side Burners



C1PB

C1PB - 24" POWER BURNER

C1PBLP	Power Burner; LP
C1PBNG	Power Burner; NG

- Dual-valve burner with up to 60,000 BTU output
- Stainless steel lid included
- Simmer performance at 1,000 BTU
- 304 stainless steel

ACCESSORIES

C2UNCT	Universal cart for C1PB, C1CHCS, CRC	CWOK	Wok Accessory for C1PB
CCVRPB-BI	Power Burner Cover, Black	CJAKTC1PB	Insulated Jacket for C1PB
CCVRPB-BIG	Power Burner Cover, Gray	COYVENT	Stainless Steel Island Vent
CTEP	Teppanyaki Griddle for C1PB		



C1PBLP+ C2UNCT



C1SB

SINGLE & DUAL BURNERS

C1SBLP	Single Side Burner; LP
C1SBNG	Single Side Burner; NG
C1DBLP	Double Side Burner; LP
C1DBNG	Double Side Burner; NG
C1CSBLP	Single Side Burner for Carts; LP
C1CSBNG	Single Side Burner for Carts; NG

- Single Burner: One 15,000 BTU Brass burner
- Dual Burner: Two 15,000 BTU Brass burner
- Stainless steel lid included
- 304 stainless steel

ACCESSORIES

CCVRSB-BI	Single Side Burner Cover, Black	CJAKTC1SB	Insulated Jacket for C1SB
CCVRSB-BIG	Single Side Burner Cover, Gray	CJAKTC1DB	Insulated Jacket for C1DB
CCVRDB-BI	Double Side Burner Cover, Black	COYVENT	Stainless Steel Island Vent
CCVRDB-BIG	Double Side Burner Cover, Gray		



C1DB

Specifications and features may vary. Please refer to the manufacturer's website for the latest updates.

Storage



CSA2417



CDA2426

ACCESS DOORS

CSA1420	Single Access Door 14" x 20"
CSA1724	Single Access Door 17" x 24"
CSA2014	Single Access Door 20" x 14"
CSA2417	Single Access Door 24" x 17"
CDA2426	Double Access Door 24" X 26"
CDA2431	Double Access Door 24" X 31"
CDA2436	Double Access Door 24" X 36"
CDA2439	Double Access Door 24" X 39"

- Single & double hinged doors for built-in island applications
- Completely constructed with 304 stainless steel
- Professional style Coyote stainless steel handle
- Commercial quality hinges for smooth operation
- Rigid construction to ensure long term durability
- Open interior for island/wall access capability
- Beveled trim



C2DC



CDPC31



CSSD

DRAWERS/STORAGE

C2DC	2 Drawer Cabinet
C3DC	3 Drawer Cabinet
CSSD	Single Storage Drawer
CDPC31	31" Dry Pantry Storage

All cabinets are made of rigid, premium stainless steel with a consistent beveled trim and professional handles.



CSTC



CPOD



CSPRK

SPECIALTY DRAWERS

CTC	Dual Pull Out Trash and Recycle
CSTC	Single Pull Out Trash and Recycle
CFBTRC	Front Back Recycle/Trash Combo
CPOD	Pull Out Drawer (Trash Can/LP Tank)
CPTH	Paper Towel Holder
CSPRK	Spice Rack

All cabinets are made of rigid, premium stainless steel with a consistent beveled trim and professional handles.

Specifications and features may vary. Please refer to the manufacturer's website for the latest updates.

Storage



CCD-POD



CCD-2DC



CCD-WD



CWD

COMBINATION STORAGE SOLUTIONS

CCD-POD	Pull Out Drawer plus Double Access Doors
CCD-2DC	Two Drawer Cabinet plus Double Access Doors
CCD-WD	Warming Drawer plus Pullout Drawer and Access Door
CCD-2DC31	Combo Door and Drawer

All cabinets are made of rigid, premium stainless steel with a consistent beveled trim and professional handles.

WARMING DRAWER

CWD	30" Warming Drawer
-----	--------------------

- Premium stainless steel construction
- Internal, 400 watt, variable electric heating element
- Up to 140 degrees of heating capability
- External on/off light with hidden controls
- Full extension drawer on rollers for smooth operation
- Outdoor certified

Specifications and features may vary. Please refer to the manufacturer's website for the latest updates.

Refrigeration & Refreshments



CBIR



C1BIR24

REFRIGERATION

CBIR-R	21" Built-in Refrig; Right Hinge
CBIR-L	21" Built-in Refrig; Left Hinge
C1BIR24-R	24" Built-in Refrig; Right Hinge
C1BIR24-L	24" Built-in Refrig; Left Hinge

- Door lock on toekick (on C1BIR24)
- Outdoor rated, freestanding refrigerator
- Automatic defrost
- Stainless steel cabinet construction; graphite interior
- Capacity: CBIR - 4.1 cubic feet
C1BIR24 - 5.5 cubic feet
- Graphite interior (C1BIR24)
- Interior light and adjustable digital thermostat
- Front vented for built-in application
- Hidden hinge with left or right swing

ACCESSORIES

CBIR21TK	21" Refrigerator Trim Kit	C1BIR24TK	24" Refrigerator Trim Kit
----------	---------------------------	-----------	---------------------------

CRC - 30" REFRESHMENT CENTER

CRC	30" Refreshment Center
-----	------------------------

- Premium stainless steel construction
- Includes drop-in cooler with drain
- Condiment tray insert for drop-in cooler
- Convenient shelf in front of sink
- Cutting board accessory for sink

ACCESSORIES

C2UNCT	Universal cart for C1PB, C1CHCS, CRC
--------	--------------------------------------



CRC + C2UNCT

CDIC - 25" DROP-IN COOLER

CDIC	25" Drop In Cooler
------	--------------------

- Drops into countertop for easy access
- Fully insulated
- Drain hole with plug included
- Capacity of 2.1 cubic feet



Specifications and features may vary. Please refer to the manufacturer's website for the latest updates.

Refrigeration & Refreshments



CPOC - 27" PULL OUT ICE CHEST

CPOC

27" Pull Out Ice Chest

- 27" Pull Out Ice Chest
- Full extension drawer with commercial quality rails
- Fully insulated
- Drain hole with plug included
- Capacity of 3.8 cubic feet
- Removable condiment trays



C1SINK1618

SINKS

CFHSINK

Farmhouse Sink

C1SINK1618

16" Sink - Universal Mount (no faucet)

C1SINKF21

21" Sink w/ Faucet, Drain & Soap Dispenser

- Universal Mount
- 304 Stainless Steel
- Drain Included



C1SINKF21

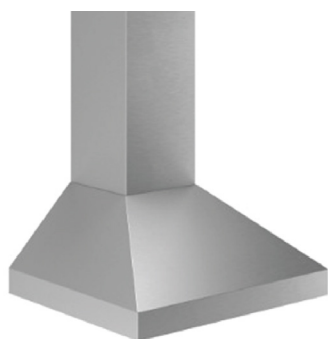
Specifications and features may vary. Please refer to the manufacturer's website for the latest updates.

Ventilation Hoods & Liners



CHIMNEY HOODS (BODY ONLY)

C1HOOD36	36" W x 30" D Chimney Hood
C1HOOD42	42" W x 30" D Chimney Hood
C1HOOD48	48" W x 30" D Chimney Hood



- Easy to clean Baffle Filters
- Deep 30" design for outdoor use
- Bright halogen lighting
- Variable speed control with lighted On/Off
- Heat sentry for greater reliability
- Removable grease drip rail
- 304 stainless steel

ACCESSORIES

C1BLOW1200	1200 CFM Blower	C1FLUE12	High Flue (for ceilings 9'8" - 12' in height)
C1FLUE8	Low Flue (for ceilings 8' - 8'6" in height)		
C1FLUE10	Medium Flue (for ceilings 8'6" - 9'8" in height)		

C1HOOD42 + C1FLUE10 +
C1BLOW1200



INSERTS

C1LINER36	36" W x 30" D Insert
C1LINER42	42" W x 30" D Insert
C1LINER48	48" W x 30" D Insert

- Easy to clean Baffle Filters
- Deep 30" design for outdoor use
- Bright halogen lighting
- Variable speed control with lighted On/Off
- Heat sentry for greater reliability
- Removable grease drip rail
- 304 stainless steel

ACCESSORIES

C1BLOW1200	1200 CFM Blower
------------	-----------------

Specifications and features may vary. Please refer to the manufacturer's website for the latest updates.

Product & Installation Specifications

Model	Product Description	Cutout Dimensions			Overall Dimensions			Total BTU Ratings		Electrical Requirements
	Grills	Height	Width	Depth	Height	Width	Depth	LP	NG	120 VAC
C1C28	28" Grill w/ Hood Lights	10 1/4"	25"	20 1/2"	23"	28"	25 1/2"	40,000	40,000	Qty 1
C2C34	34" Grill w/ Hood Lights	10 1/4"	31"	20 1/2"	23"	34"	25 1/2"	60,000	60,000	Qty 1
C2C36	36" Grill w/ Hood Lights	10 1/4"	32 1/2"	20 1/2"	23"	35 1/2"	25 1/2"	80,000	80,000	Qty 1
C2C42	42" Grill w/ Hood Lights	10 1/4"	39 1/2"	20 1/2"	23"	42 1/2"	25 1/2"	100,000	100,000	Qty 1
C1S36	36" Grill w/ Hood Lights	10 1/4"	32 1/2"	20 1/2"	23"	35 1/2"	25 1/2"	90,000	90,000	Qty 1
C2SL30	30" Grill w/ Hood & LED Lights	10 1/4"	27"	20 1/2"	23"	30"	25 1/2"	70,000	70,000	Qty 1
C2SL36	36" Grill w/ Hood & LED Lights	10 1/4"	32 1/2"	20 1/2"	23"	35 1/2"	25 1/2"	90,000	90,000	Qty 1
C2SL42	42" Grill w/ Hood & LED Lights	10 1/4"	39 1/2"	20 1/2"	23"	42 1/2"	25 1/2"	110,000	110,000	Qty 1
C1HY50	50" Hybrid Grill w/ Hood Lights	12 1/2"	47 3/4"	20 1/2"	25 1/4"	50"	25 1/2"	40,000	40,000	Qty 1
C1CH36	36" Charcoal Grill	12 1/2"	32 1/2"	20 1/2"	25 1/4"	35 1/2"	25 1/2"	N/A		Qty 1
C1CHCS	Asado Smoker	17"	22 1/2"	22 1/2"	34"	22 1/4"	22 1/4"	N/A		None
C1EL120SM	Electric Grill Manual Control	3 3/8"	16"	15"	11 3/8"	18 1/8"	16 1/4"	N/A		Qty 1
C1PORTLP	Portable Grill	N/A			13 1/2"	25"	16"	20,000	N/A	None
C1P28	28" Pellet Grill	16-1/2"	26-1/4"	23"	31"	28"	27"	8,000 BTU Per/Hr		Qty 1
C1P36	36" Pellet Grill	16-1/2"	34 1/4"	23"	31"	36"	27"	8,000 BTU Per/Hr		Qty 1
C1FTG30	30" Flat Top Grill	10-1/4"	27 1/4"	20-1/2"	13-1/2"	30"	25-1/2"	34,000	34,000	Qty 1
Side Burners		Height	Width	Depth	Height	Width	Depth	LP	NG	
C1SB	Coyote Single Side Burner	10 1/4"	10 1/8"	13 5/8"	13"	11 3/8"	17"	15,000	15,000	None
C1DB	Coyote Dual Side Burner	10 1/4"	11 7/8"	20 1/4"	13"	13 1/8"	23 1/4"	30,000	30,000	None
C1PB	Coyote Power Burner	10 1/4"	21"	21"	13"	24"	24 1/4"	60,000	60,000	None
Insulated Jackets		Height	Width	Depth	Height	Width	Depth	Notes		
CJAKTCC2	Insulated Jacket for 28" Grills	11"	28 1/4"	22 1/8"	11"	30 1/8"	23"	For Combustible Construction		
CJAKTCC3	Insulated Jacket for 34" Grills	11"	34 1/4"	22 1/8"	11"	36 1/8"	23"	For Combustible Construction		
CJAKTCS30	Insulated Jacket for 30" Grills	11"	30 3/4"	22 1/8"	11"	32 3/8"	23"	For Combustible Construction		
CJAKTCS36	Insulated Jacket for 36" Grills	11"	35 3/4"	22 1/8"	11"	37 5/8"	23"	For Combustible Construction		
CJAKTCS42	Insulated Jacket for 42" Grills	11"	42 1/4"	22 1/8"	11"	44 1/8"	23"	For Combustible Construction		
CJAKTCIP28	Insulated Jacket for 28" Pellet Grill	17 1/4"	27 1/4"	22 1/2"	17 3/4"	30"	24 3/4"	For Combustible Construction		
CJAKTCIP36	Insulated Jacket for 36" Pellet Grill	17 1/4"	35 1/4"	22 1/2"	17 3/4"	37 3/4"	24 3/4"	For Combustible Construction		
CJAKTCISB	Insulated Jacket for C1SB	11"	13 3/4"	16"	11"	15 1/4"	16 3/4"	For Combustible Construction		
CJAKTCIDB	Insulated Jacket for C1DB	11"	15 1/2"	22 1/4"	11"	17"	23"	For Combustible Construction		
CJAKTCIPB	Insulated Jacket for C1PB	11"	22 1/8"	21 7/8"	11"	24 7/8"	22 3/4"	For Combustible Construction		
Access Doors		Height	Width	Depth	Height	Width	Depth	Notes		
CDA2426	26" Double Access Door	20 1/2"	20 3/4"	1"	24"	24 1/4"	3"	N/A		
CDA2431	31" Double Access Door	20 1/2"	26 1/2"	1"	24"	30"	3"	N/A		
CDA2436	36" Double Access Door	20 1/2"	31 3/4"	1"	24"	35 1/2"	3"	N/A		
CDA2439	39" Double Access Door	20 1/2"	34 1/2"	1"	24"	38"	3"	N/A		
CSA2014	Single Access Door 20" x 14"	20 1/2"	14 1/2"	1"	22"	16"	3"	N/A		
CSA1420	Single Access Door 14" x 20"	14 1/2"	20 1/2"	1"	16"	22"	3"	N/A		
CSA2417	Single Access Door 24" x 17"	24 1/2"	17 1/2"	1"	26"	19"	3"	N/A		
CSA1724	Single Access Door 17" x 24"	17 1/2"	24 1/2"	1"	19"	26"	3"	N/A		

Specifications and features may vary. Please refer to the manufacturer's website for the latest updates.

Product & Installation Specifications

Model	Product Description	Cutout Dimensions			Overall Dimensions			Total BTU Ratings	Electrical Requirements
Drawers		Height	Width	Depth	Height	Width	Depth	Notes	
C2DC	2 Drawer Cabinet	20 1/2"	14 1/2"	17 1/2"	22"	16 1/4"	18"	N/A	
C3DC	3 Drawer Cabinet	24 1/2"	16 3/4"	17 1/4"	26"	18 1/2"	18"	N/A	
CSSD	Single Storage Drawer	13 1/2"	31 1/2"	20 1/2"	15"	32 1/2"	21 1/4"	N/A	
CDPC31	31" Dry Pantry	20 1/2"	26 1/2"	23"	24"	30"	24"	N/A	
CTC	Dual Pull Out Trash & Recycle	24"	24"	18"	26 1/4"	26 3/4"	19"	N/A	
CSTC	Single Pull Out Trash & Recycle	23 7/8"	11 3/8"	18"	26 1/4"	14 3/8"	18 7/8"	N/A	
CPOD	LP Tank or Trash Drawer	20 1/2"	14 1/4"	17 1/2"	22"	15 1/2"	18"	N/A	
CPTH	Paper Towel Holder	8 1/4"	13 1/2"	8"	10"	15"	9"	N/A	
CSPRK	Spice Rack	25"	7 1/2"	17 1/8"	26 1/4"	8 3/4"	18"	N/A	
CWD	Warming Drawer	9 1/2"	28 1/4"	23 1/2"	10 3/4"	29 1/2"	26 3/4"	N/A	
CFBTRC	Front Back Recycle/Trash Combo	26 1/4"	16 1/4"	23 3/4"	28"	18"	26"	N/A	
Combo Drawers		Height	Width	Depth	Height	Width	Depth	Notes	
CCD-2DC	Double Drawer Combo	20 1/4"	43 3/8"	17 1/8"	24 1/8"	45 1/4"	18 3/8"	N/A	
CCD-2DC31	31" Double Drawer Combo	20 1/2"	26 1/2"	20 1/8"	24"	30"	21 1/8"	N/A	
CCD-POD	Pull Out Drawer Combo	20 3/8"	43 3/8"	17 1/2"	24 1/8"	45 1/4"	18"	N/A	
CCD-WD	Warming Drawer Combo	19 1/2"	40 5/8"	25 1/4"	20 3/4"	42 1/8"	26 1/2"	Qty 1 Plug Needed - unit is 450 Watt	
Refrigeration & Refreshment Centers		Height	Width	Depth	Height	Width	Depth	Notes	
CBIR	4.1 Outdoor Refrigerator	34"	20 3/4"	23"	33 3/4"	20 1/2"	22 3/4"	Qty 1 Plug Needed - Vented Bottom Front	
C1BIR24	5.5 Outdoor Refrigerator	33 1/4"	23 3/4"	22 3/4"	33"	23 1/2"	22 1/2"	Qty 1 Plug Needed - Vented Bottom Front	
CBIR21TK	CBIR Refrigerator Trim Kit	34"	20 3/4"	1"	35"	22 3/4"	1"	N/A	
C1BIR24TK	C1BIR24 Refrigerator Trim Kit	33 1/4"	23 3/4"	1"	34 1/4"	25 3/4"	1"	N/A	
CDIC	Drop In Cooler	12"	23 1/4"	17 1/4"	15"	24 1/2"	18"	Can be turned in either direction	
CPOC	Pull Out Ice Chest	17 1/2"	23 3/4"	24 3/4"	20 1/2"	26 3/4"	25 1/2"	N/A	
CRC	Refreshment Center	10"	29 1/4"	22 3/4"	10 3/4"	30 1/4"	29"	Drain Hose Included	
C1SINK1618	Sink - Universal Mount	13"	14 3/4"	17 1/8"	13"	15 3/4"	17 3/4"	Includes drain but no faucet	
C1SINKF21	21" Sink	13 3/4"	18 1/4"	18 1/4"	14 1/4"	21"	21"	Includes drain, faucet & soap dispenser	
CFHSINK	Farmhouse Sink	10"	27 1/2"	20 5/8"	10 7/8"	30"	25 1/4"	Includes drain, faucet, strainer	

Specifications and features may vary. Please refer to the manufacturer's website for the latest updates.

Warranty

Coyote Outdoor Living, Inc. issues this limited warranty to the original purchaser at the original site of delivery with proof of purchase and specifically warrants that the Outdoor Gas grill when subject to normal residential use, will be free from defects in workmanship and materials for the periods specified below. This limited warranty is not transferable and specifically excludes any grill used in a commercial setting, where anyone other than the original purchaser (homeowner) would be using and maintaining the grill. This limited warranty specifically excludes all issues that may arise from surface corrosion, scratches, and discoloration during regular use. This limited warranty does **NOT COVER LABOR OR LABOR RELATED CHARGES** and there will be shipping and handling charges for the delivery of part(s).

COMPONENT.....	WARRANTY PERIOD
Cooking Grids (no rust or burn through)	5 years (limited)
Flavorizer Bars (no rust or burn through)	2 years (limited)
Electric/Plastic Components	2 years (limited)
Ignition systems/Valves	1 year (limited)
Stainless steel frame/housing	Limited Lifetime
Stainless Steel Burners (no rust or burn through).....	Limited Lifetime

Coyote Outdoor Living, Inc.'s obligation under this limited warranty is limited solely to repair or replacement, at our option, of the pertinent component during the warranty period, and the extent of any liability of Coyote Outdoor Living, Inc. under this warranty is limited to repair or replacement. This limited warranty does not cover normal wear of parts or damage resulting from any of the following: negligent use or misuse of the product, use of an improper fuel/gas supply, use contrary to operating instructions, or alteration by any person other than a factory service center. The above warranty periods are not extended by any repair or replacement.

Please see Coyote Outdoor Living website at www.coyoteoutdoor.com for full warranty terms and conditions. This information is subject to change without notice. See website for most current information.

Specifications and features may vary. Please refer to the manufacturer's website for the latest updates.

PRODUCT GUIDE 2023



T 800 361 0799 F 450 682 7943

www.distinctive-online.com info@distinctive-online.com

EASTERN CANADA

HEAD OFFICE & WAREHOUSE
2025 Cunard Street
Laval, QC H7S 2N1

WESTERN CANADA

WAREHOUSE
NFI 1020 Derwent Way
Delta, BC V3M 5R1

PARTS & SERVICE

service@distinctive-online.com
800 561 7265

ORDER DESK

orderdesk@distinctive-online.com