



BERTAZZONI

INDEX

FREESTANDING RANGES

Gas Ranges - Professional / Master / Heritage	3 - 4 - 5
Dual Fuel Ranges - Professional / Master / Heritage	6 - 7
Induction Ranges - Professional / Master	8 - 9
Electric ranges	10

BUILT-IN OVENS & SPECIALTY

Electric Ovens - Professional / Master	11-12
Speed Ovens - Professional / Master	12
Steam Ovens - Professional / Master	12
Microwave Ovens / OTR / Drawer - Professional / Master	13
Warming Drawers - Professional / Master	13

RANGETOPS & COOKTOPS

Gas Rangetops	14
Gas Cooktops	14-15
Induction Cooktops	16
Electric Cooktops	16

REFRIGERATION

French door Refrigerators	17
Freestanding Refrigerators	18
Integrated Refrigerator	19
Built-in Bottom Mount Refrigerators	19
Built-in Refrigerator	20-21
Built-in Wine Cellars	21
Installation Trim Kits	22

CLEAN UP

Built-in Dishwashers	23
----------------------	----

VENTILATION

Undermount / Wallmount hoods	24
Contemporary / Chimney Wallmount Hoods	25
T-Shape Wallmount	25-26
Heritage	26
Insert	26
Visor	27

ACCESSORIES

Duct Covers and Recirculation Kits	28
Baffle, Mesh and Charcoal Filters	29
Toekick Panels, Knobs, Backguards, Decor Sets	30
Telescopic Shelves, Trays, Simmer/Wok/Griddle Plates	31
Ventilation Accessory Guide Matrix	32
Bertazzoni Color Options	33

TWO YEAR LIMITED WARRANTY

Bertazzoni SpA will repair or replace any component part which fails or proves defective due to materials and/or workmanship within 2 years from the date of installation and under conditions of normal residential use. Repair or replacement will be free of charge, including labor at standard rates and shipping expenses. Repair service must be performed by a Bertazzoni Authorized Service Center during normal working hours. Cosmetic damages must be reported no later than 30 days after installation. This warranty does not cover the use of the product in any commercial application.

Specifications and features may vary. Please refer to the manufacturer's website for the latest updates.

ALL SERIES

ALL GAS RANGES



MAST486GGASBIE



HERT366GASXT



PROF304GASART



MAST244GASXE

48" ALL-GAS RANGE

- Stainless steel electric griddle and cover (1100W)
- 2 x 19000 BTU power burners with dual ring flame delivering fastest time-to-boil in class
- 4.7 cu.ft gas main oven with dual horizontal convection fans for even baking and roasting on 7 shelf levels (including 3 wire shelves, baking tray with grill trivet, 1 set of telescopic glides)
- 2.4 cu.ft auxiliary gas oven (including 2 wire shelves, 1 set of telescopic glides)
- Main: Bake element 3500-14000 BTU - Main: Broiler element 9000 BTU - Aux: Bake element 2400-7000 BTU
- Dimensions: **W** 48" **H** 35-3/4" - 37-1/2" (adjustable legs) **D** 25-3/16" (handle not included)

36" ALL-GAS RANGE

- 2 x 19000 BTU power burners with dual ring flame delivering fastest time-to-boil in class
- 5.9 cu.ft gas oven with dual horizontal convection fans for even baking and roasting on 7 shelf levels (including 2 wire shelves, baking tray with grill trivet, 1 set of telescopic glides)
- Bake element 4100-17000 BTU - Broiler element 11000 BTU
- Dimensions: **W** 36" **H** 35-3/4" - 37-1/2" (adjustable legs) **D** 25-3/16" (handle not included)

30" ALL-GAS RANGE

- 1 x 19000 BTU power burner with dual ring flame delivering fastest time-to-boil in class
- 4.7 cu.ft gas oven with dual horizontal convection fans for even baking and roasting on 7 shelf levels (including 2 wire shelves, baking tray with grill trivet, 1 set of telescopic glides)
- Bake element 3500-14000 BTU - Broiler element 9000 BTU
- Dimensions: **W** 30" **H** 35-3/4" - 37-1/2" (adjustable legs) **D** 25-3/16" (handle not included)

24" ALL-GAS RANGE

- 1 x 19000 BTU power burner with dual ring flame delivering fastest time-to-boil in class
- 2.4 cu.ft gas oven with convection fan for even baking and roasting on 5 shelf levels
- Oven door with soft-motion hinges
- Convenient bottom storage space with stainless steel access panel
- Dimensions: **W** 23-15/16" **H** 35-3/4" - 37-1/2" (adjustable legs) **D** 25-3/16"

ALL-GAS RANGES - ADDITIONAL FEATURES

- Counter-deep maintop for flush installation with kitchen countertops and cabinets
- Soft-close oven door with edge-to-edge tempered glass (T models)
- Electric ignition with thermocouple safety device (for gas burners)
- Extra-large high-power infrared gas broiler for broiling and grilling (except 24" model)
- Elegant temperature gauge for control of oven temperature during pre-heating and baking (except 24" model)
- Smooth-glide telescopic racks (except 24" model)
- Fingerprint free stainless steel
- Included accessories: Wok ring (T models only), Simmer ring, 1" stainless steel island trim
- Ranges are available in NG (standard) or LP (selected models). A gas conversion kit is included with every range

Specifications and features may vary. Please refer to the manufacturer's website for the latest updates.

ALL SERIES

ALL GAS RANGES
48" ALL-GAS RANGES

PROF486GGASXT	●	48" Professional Series Range - Gas Oven - 6 brass burners + griddle
PROF486GGASXTLP	●	48" Professional Series Range - Gas Oven - 6 brass burners + griddle - LP version
PROF486GGASNET	●	48" Professional Series Range - Gas Oven - 6 brass burners + griddle
PROF486GGASBIT	○	48" Professional Series Range - Gas Oven - 6 brass burners + griddle
PROF486GGASGIT	●	48" Professional Series Range - Gas Oven - 6 brass burners + griddle
PROF486GGASART	●	48" Professional Series Range - Gas Oven - 6 brass burners + griddle
PROF486GGASROT	●	48" Professional Series Range - Gas Oven - 6 brass burners + griddle
MAST486GGASXT	●	48" Master Series Range - Gas Oven - 6 brass burners + griddle
MAST486GGASXTLP	●	48" Master Series Range - Gas Oven - 6 brass burners + griddle - LP
MAST486GGASXE	●	48" Master Series Range - Gas Oven - 6 aluminum burners + griddle
MAST486GGASXELP	●	48" Master Series Range - Gas Oven - 6 aluminum burners + griddle - LP version
MAST486GGASNEE	●	48" Master Series Range - Gas Oven - 6 aluminum burners + griddle
MAST486GGASBIE	○	48" Master Series Range - Gas Oven - 6 aluminum burners + griddle
HERT486GGASXT	●	48" Heritage Series Range - Gas Oven - 6 brass burners + griddle
HERT486GGASAVT	○	48" Heritage Series Range - Gas Oven - 6 brass burners + griddle
HERT486GGASNET	●	48" Heritage Series Range - Gas Oven - 6 brass burners + griddle

36" ALL-GAS RANGES

PROF366GASXT	●	36" Professional Series Range - Gas oven - 6 brass burners
PROF366GASXTLP	●	36" Professional Series Range - Gas oven - 6 brass burners - LP version
PROF366GASNET	●	36" Professional Series Range - Gas oven - 6 brass burners
PROF366GASBIT	○	36" Professional Series Range - Gas oven - 6 brass burners
PROF366GASGIT	●	36" Professional Series Range - Gas oven - 6 brass burners
PROF366GASART	●	36" Professional Series Range - Gas oven - 6 brass burners
PROF366GASROT	●	36" Professional Series Range - Gas oven - 6 brass burners
MAST366GASXT	●	36" Master Series Range - Gas Oven - 6 brass burners
MAST366GASXTLP	●	36" Master Series Range - Gas Oven - 6 brass burners - LP
MAST365GASXE	●	36" Master Series Range - Gas oven - 5 aluminum burners
MAST365GASXELP	●	36" Master Series Range - Gas oven - 5 aluminum burners - LP
MAST365GASNEE	●	36" Master Series Range - Gas oven - 5 aluminum burners
MAST365GASBIE	○	36" Master Series Range - Gas oven - 5 aluminum burners
HERT366GASXT	●	36" Heritage Series range - Gas Oven - 6 brass burners
HERT366GASAVT	○	36" Heritage Series range - Gas Oven - 6 brass burners
HERT366GASNET	●	36" Heritage Series range - Gas Oven - 6 brass burners

Specifications and features may vary. Please refer to the manufacturer's website for the latest updates.

ALL SERIES

ALL GAS RANGES



PROF486GGASART



MAST365GASBIE



PROF304GASGIT



MAST244GASNEE

30" ALL-GAS RANGES

PROF304GASXT	●	30" Professional Series Range - Gas oven - 4 brass burners
PROF304GASXTLP	●	30" Professional Series Range - Gas oven - 4 brass burners - LP version
PROF304GASNET	●	30" Professional Series Range - Gas oven - 4 brass burners
PROF304GASBIT	○	30" Professional Series Range - Gas oven - 4 brass burners
PROF304GASGIT	●	30" Professional Series Range - Gas oven - 4 brass burners
PROF304GASART	●	30" Professional Series Range - Gas oven - 4 brass burners
PROF304GASROT	●	30" Professional Series Range - Gas oven - 4 brass burners
MAST305GASXE	●	30" Master Series Range - Gas oven - 5 aluminum burners
MAST305GASXELP	●	30" Master Series Range - Gas oven - 5 aluminum burners - LP
MAST305GASNEE	●	30" Master Series Range - Gas oven - 5 aluminum burners
MAST305GASBIE	○	30" Master Series Range - Gas oven - 5 aluminum burners

24" ALL-GAS RANGES

PROF244GASXE	●	24" Professional Series range - Gas oven - 4 aluminum burners
PROF244GASXE LP	●	24" Professional Series range - Gas oven - 4 aluminum burners - LP version
MAST244GASXE	●	24" Master Series range - Gas oven - 4 aluminum burners
MAST244GASXE LP	●	24" Master Series range - Gas oven - 4 aluminum burners - LP version
MAST244GASNEE	●	24" Master Series range - Gas oven - 4 aluminum burners
MAST244GASBIE	○	24" Master Series range - Gas oven - 4 aluminum burners



6 Burner Configuration



Professional Series Knob



Master Series Knob



Heritage Series Knob

Specifications and features may vary. Please refer to the manufacturer's website for the latest updates.

ALL SERIES

DUAL FUEL RANGES



HERT486DFSNET



MAST366DFSXT



PROF304DFSROT



MAST305DFMBIE



Professional Series Handle



Master Series Handle



Heritage Series Handle

48" DUAL FUEL RANGE

- Stainless steel electric griddle and cover (1100W)
- 2 x 19000 BTU power burners with dual ring flame delivering fastest time-to-boil in class
- 4.6 cu.ft main electric oven with dual **diagonal** convection fans for even baking and roasting on 7 shelf levels (including 3 wire shelves, baking tray with grill trivet, 1 set of telescopic glides)
- 2.4 cu.ft auxiliary electric oven (including 2 wire shelves, 1 set of telescopic glides)
- 8-pass electric broiler in main oven with optional convection and 6-pass electric broiler in auxiliary oven
- Bake: Bottom 2100W / 900W - Bake: Top 1400W / 900W - Broiler: 3400W / 2000W - Convection: 2 x 1650W
- Dimensions: W 48" H 35-3/4" - 37-1/2" (adjustable legs) D 25-3/16" (handle not included)

36" DUAL FUEL RANGE

- 2 x 19000 BTU power burners with dual ring flame delivering fastest time-to-boil in class (1 power burner for DFM models)
- **DFS** Models: 5.7 cu.ft main electric oven with dual **diagonal** convection fans for even baking and roasting on 7 shelf levels (including 3 wire shelves, baking tray with grill trivet, 1 set of telescopic glides)
- **DFM** Models: 5.9 cu.ft main electric oven with dual **horizontal** convection fans on 7 shelf levels (including 3 wire shelves, baking tray with grill trivet)
- 10-pass electric broiler for broiling and grilling, with optional convection
- Bake: Bottom 2400W - Bake: Top 1600W - Broiler: 4000W - Convection: 2 x 1650W (DFS models)
- Bake: Bottom 1600W - Bake: Top 1200W - Broiler: 2700W - Convection: 2 x 1200W (DFM models)
- Dimensions: W 36" H 35-3/4" - 37-1/2" (adjustable legs) D 25-3/16" (handle not included)

30" DUAL FUEL RANGE

- 1 x 19000 BTU power burner with dual ring flame delivering fastest time-to-boil in class
- **DFS** Models: 4.6 cu.ft main electric oven with dual **diagonal** convection fans for even baking and roasting on 7 shelf levels (including 3 wire shelves, baking tray with grill trivet, 1 set of telescopic glides)
- **DFM** Models: 4.7 cu.ft main electric oven with dual **horizontal** convection fans on 7 shelf levels (including 3 wire shelves, baking tray with grill trivet)
- 8-pass electric broiler for broiling and grilling, with optional convection
- Bake: Bottom 2100W - Bake: Top 1400W - Broiler: 3400W - Convection: 2 x 1650W (DFS models)
- Bake: Bottom 1600W - Bake: Top 1200W - Broiler: 2700W - Convection: 2 x 1200W (DFM models)
- Dimensions: W 30" H 35-3/4" - 37-1/2" (adjustable legs) D 25-3/16" (handle not included)

DUAL FUEL RANGES - ADDITIONAL FEATURES

- **DFS** Models Functions (Dual Fuel **Self Clean**):
Warming/Proofing/Dehydrate - Bake - Convection - Convection Bake - Broil - Convection Broil - Pizza - Clean
- **DFM** Models Functions (Dual Fuel **Manual Clean**):
Fast preheat - Bake - Bottom Bake - Upper bake - Convection - Convection Bake - Broil - Convection Broil - Pizza
- Electric ignition with thermocouple safety device
- Counter-deep maintop for flush installation with countertops and cabinets
- Fingerprint free stainless steel
- Food temperature probe for accurate roasting + baking (DFS models only)
- Elegant digital gauge for precise control of oven temperature during pre-heating and baking with integrated controls for the temperature probe (DFS models only)
- Soft-close oven door with edge-to-edge tempered glass (DFS models)
- Oven door with edge-to-edge tempered glass (DFM models)
- Included accessories: Wok ring (except DFM models), Simmer ring, 1" stainless steel island trim
- Ranges are available in NG (standard) or LP (selected models). A gas conversion kit is included with every range

Specifications and features may vary. Please refer to the manufacturer's website for the latest updates.

ALL SERIES

DUAL FUEL RANGES
48" DUAL FUEL RANGES

PROF486GDFSXT	●	48" Professional Series Range - Electric self clean oven - 6 brass burners + griddle
PROF486GDFSNET	●	48" Professional Series Range - Electric self clean oven - 6 brass burners + griddle
PROF486GDFSBIT	○	48" Professional Series Range - Electric self clean oven - 6 brass burners + griddle
PROF486GDFSGIT	●	48" Professional Series Range - Electric self clean oven - 6 brass burners + griddle
PROF486GDFSART	●	48" Professional Series Range - Electric self clean oven - 6 brass burners + griddle
PROF486GDFSROT	●	48" Professional Series Range - Electric self clean oven - 6 brass burners + griddle
MAST486GDFSXT	●	48" Master Series Range - Electric self clean oven - 6 brass burners + griddle
MAST486GDFMXE	●	48" Master Series Range - Electric oven - 6 aluminium burners + griddle
HERT486GDFSXT	●	48" Heritage Series Range - Electric self clean oven - 6 brass burners + griddle
HERT486GDFSAVT	○	48" Heritage Series Range - Electric self clean oven - 6 brass burners + griddle
HERT486GDFSNET	●	48" Heritage Series Range - Electric self clean oven - 6 brass burners + griddle

36" DUAL FUEL RANGES

PROF366DFSXT	●	36" Professional Series Range - Electric self clean oven - 6 brass burners
PROF366DFSNET	●	36" Professional Series Range - Electric self clean oven - 6 brass burners
PROF366DFSBIT	○	36" Professional Series Range - Electric self clean oven - 6 brass burners
PROF366DFSGIT	●	36" Professional Series Range - Electric self clean oven - 6 brass burners
PROF366DFSART	●	36" Professional Series Range - Electric self clean oven - 6 brass burners
PROF366DFSROT	●	36" Professional Series Range - Electric self clean oven - 6 brass burners
MAST366DFSXT	●	36" Master Series Range - Electric self clean oven - 6 brass burners
MAST365DFMXE	●	36" Master Series Range - Electric oven - 5 aluminum burners
MAST365DFMNEE	●	36" Master Series Range - Electric oven - 5 aluminum burners
MAST365DFMBIE	○	36" Master Series Range - Electric oven - 5 aluminum burners
HERT366DFSXT	●	36" Heritage Series Range - Electric self clean oven - 6 brass burners
HERT366DFSART	○	36" Heritage Series Range - Electric self clean oven - 6 brass burners
HERT366DFSNET	●	36" Heritage Series Range - Electric self clean oven - 6 brass burners

30" DUAL FUEL RANGES

PROF304DFSXT	●	30" Professional Series Range - Electric self clean oven - 4 brass burners
PROF304DFSNET	●	30" Professional Series Range - Electric self clean oven - 4 brass burners
PROF304DFSBIT	○	30" Professional Series Range - Electric self clean oven - 4 brass burners
PROF304DFSGIT	●	30" Professional Series Range - Electric self clean oven - 4 brass burners
PROF304DFSART	●	30" Professional Series Range - Electric self clean oven - 4 brass burners
PROF304DFSROT	●	30" Professional Series Range - Electric self clean oven - 4 brass burners
MAST305DFMXE	●	30" Master Series Range - Electric oven - 5 aluminum burners
MAST305DFMNEE	●	30" Master Series Range - Electric oven - 5 aluminum burners
MAST305DFMBIE	○	30" Master Series Range - Electric oven - 5 aluminum burners

Specifications and features may vary. Please refer to the manufacturer's website for the latest updates.

PROFESSIONAL &
MASTER SERIES

INDUCTION RANGES



PROF365INSGIT



MAST365INSXT



PROF304INSBIT



MAST304INMNEE

36" INDUCTION RANGE 5 ZONES

- **INS** Models: 5.7 cu.ft electric oven with dual **diagonal** convection fans for even baking and roasting on 7 shelf levels (including 2 wire shelves, baking tray with grill trivet, 1 set of telescopic glides)
- **INM** Models: 5.9 cu.ft electric oven with dual **horizontal** convection fans for even baking and roasting on 7 shelf levels (including 2 wire shelves, baking tray with grill trivet)
- Maintop with 5 latest generation extra-large induction zones and bridging of right-side zones
- 10-pass electric broiler for broiling and grilling, with optional convection
- Bake: Bottom 2400W - Bake: Top 1600W - Broiler: 4000W - Convection: 2 x 1650W (INS models)
Electrical supply: 120/240V 60 Hz -17,000W / 50 Amp
- Bake: Bottom 1600W - Bake: Top 1200W - Broiler: 2700W - Convection: 2 x 1200W (INM models)
Electrical supply: 120/240V 60 Hz -15,000W / 40 Amp
- Dimensions: W 36" H 35-3/4" - 37-1/2" (adjustable legs) D 25-3/16" (handle not included)

30" INDUCTION RANGE 4 ZONES

- **INS** Models: 4.6 cu.ft electric oven with dual **diagonal** convection fans for even baking and roasting on 7 shelf levels (including 2 wire shelves, baking tray with grill trivet, 1 set of telescopic glides)
- **INM** Models: 4.7 cu.ft electric oven with dual **horizontal** convection fans for even baking and roasting on 7 shelf levels (including 2 wire shelves, baking tray with grill trivet)
- Maintop with 4 latest generation extra-large induction zones and bridging of right-side zones
- 8-pass electric broiler for broiling and grilling, with optional convection
- Bake: Bottom 2100W - Bake: Top 1400W - Broiler: 3400W - Convection: 2 x 1650W (INS models)
Electrical supply: 120/240V 60 Hz -13,000W / 40 Amp
- Bake: Bottom 1600W - Bake: Top 1200W - Broiler: 2700W - Convection: 2 x 1200W (INM models)
Electrical supply: 120/240V 60 Hz -11,000W / 40 Amp
- Dimensions: W 30" H 35-3/4" - 37-1/2" (adjustable legs) D 25-3/16" (handle not included)

INDUCTION RANGES - ADDITIONAL FEATURES

- **INS** Models Functions (**Induction Self Clean**): Warming/Proofing/Dehydrate - Bake - Convection - Convection Bake - Broil - Convection Broil - Pizza - Clean
- **INM** Models Functions (**Induction Manual Clean**): Fast preheat - Bake - Bottom Bake - Upper bake - Convection - Convection Bake - Broil - Convection Broil - Pizza
- Counter-deep maintop for flush installation with countertops and cabinets
- Fingerprint free stainless steel
- Food temperature probe for accurate roasting and baking (INS models only)
- Elegant digital gauge for precise control of oven temperature during pre-heating and baking with integrated controls for the temperature probe (INS models only)
- Soft-close oven door with edge-to-edge tempered glass (INS models)
- Included accessory: 1" stainless steel island trim

Specifications and features may vary. Please refer to the manufacturer's website for the latest updates.

PROFESSIONAL &
MASTER SERIES

INDUCTION RANGES



5 Heating Zone Configuration



Digital Gauge
(Self Clean Models)



Gauge
(Manual Clean Models)

36" INDUCTION RANGES

PROF365INSXT	●	36" Professional Series Range - Electric self clean oven - 5 induction zones
PROF365INSNET	●	36" Professional Series Range - Electric self clean oven - 5 induction zones
PROF365INSBIT	○	36" Professional Series Range - Electric self clean oven - 5 induction zones
PROF365INSGIT	●	36" Professional Series Range - Electric self clean oven - 5 induction zones
PROF365INSART	●	36" Professional Series Range - Electric self clean oven - 5 induction zones
PROF365INSROT	●	36" Professional Series Range - Electric self clean oven - 5 induction zones
MAST365INSXT	●	36" Master Series Range - Electric self clean oven - 5 induction zones
MAST365INMXE	●	36" Master Series Range - Electric manual clean oven - 5 induction zones
MAST365INMBIE	○	36" Master Series Range - Electric manual clean oven - 5 induction zones
MAST365INMNEE	●	36" Master Series Range - Electric manual clean oven - 5 induction zones

30" INDUCTION RANGES

PROF304INSXT	●	30" Professional Series Range - Electric self clean oven - 4 induction zones
PROF304INSNET	●	30" Professional Series Range - Electric self clean oven - 4 induction zones
PROF304INSBIT	○	30" Professional Series Range - Electric self clean oven - 4 induction zones
PROF304INSGIT	●	30" Professional Series Range - Electric self clean oven - 4 induction zones
PROF304INSART	●	30" Professional Series Range - Electric self clean oven - 4 induction zones
PROF304INSROT	●	30" Professional Series Range - Electric self clean oven - 4 induction zones
PROF304INMXE	●	30" Professional Series Range - Electric manual clean oven - 4 induction zones
MAST304INMXE	●	30" Master Series Range - Electric manual clean oven - 4 induction zones
MAST304INMBIE	○	30" Master Series Range - Electric manual clean oven - 4 induction zones
MAST304INMNEE	●	30" Master Series Range - Electric manual clean oven - 4 induction zones

Specifications and features may vary. Please refer to the manufacturer's website for the latest updates.

PROFESSIONAL &
MASTER SERIES

ELECTRICAL RANGES



PROF304CEMXE



MAST304CEMXE

PROF304CEMXE ● 30" Professional Series Range - Electric - 4 Heating Zones

MAST304CEMXE ● 30" Professional Series Range - Electric - 4 Heating Zones

- 4.7 cu. ft electric oven with dual horizontal convection fans for even baking and roasting on 7 shelf levels
- 6-pass electric broiler for broiling and grilling, with optional convection
- Bake: Bottom 1600W- Bake: Top 1200W - Broiler: 2700W - Convection: 2 x 1200W
- Elegant temperature gauge for control of oven temperature during pre-heating and baking
- Oven door with edge-to-edge tempered glass and soft-motion hinges
- Maintop: Front Left 9" 2100W - Back Left 6.5" 1200W - Front Right 6.5" 1200W - Back Right 7.75" 1800W
- Residual heat indicator light
- 1" stainless steel island trim
- Electrical Supply 120/240V 60 Hz - 10,000 W / 40 Amp dedicated circuit

Specifications and features may vary. Please refer to the manufacturer's website for the latest updates.

PROFESSIONAL &
MASTER SERIES

BUILT-IN OVENS

30" ELECTRIC CONVECTION SINGLE OVEN

PROF30FSEXT	30" Professional Series - Single Self-Clean Oven - Top Version (T)
MAST30FSEXT	30" Master Series - Single Self-Clean Oven - Top Version (T)
PROF30FSE XV	30" Professional Series - Single Oven - Value Version (V)
MAST30FSE XV	30" Master Series - Single Oven - Value Version (V)

30" ELECTRIC CONVECTION DOUBLE OVEN

PROF30FDEXT	30" Professional Series - Double Self-Clean Oven - Top Version (T)
MAST30FDEXT	30" Master Series - Double Self-Clean Oven - Top Version (T)
PROF30FDE XV	30" Professional Series - Double Oven - Value Version (V)
MAST30FDE XV	30" Master Series - Oven - Value Version (V)

- TFT Display + knobs with 10 cooking modes
+ Assistant (XT models)
LED touch control interface + knobs with 9 cooking modes (XV models)
- Flush front design and suitable for undercounter installation
- Fingerprint free stainless steel
- Dual diagonal convection system
- Net volume for each cavity : 4.1 cu.ft
- Dimensions: **W** 29-7/8" / **D** 22-5/8" / **H** 28-5/8" (single) **H** 53-1/4" (double)
- Bake: 5400W Broiler: 3400 W Convection: 3300W
- Touch digital programmer timer
- Electrical supply: 30 Amp - 5 000 W (single)
Electrical supply: 50 Amp - 11 000 W (double)
- Soft-Close on XT models
- Soft-Motion on XV models
- 1 wire shelf flat + 1 wire shelf shaped + 1 baking tray with roasting trivet (XV Model)
- 1 wire shelf flat + 1 wire shelf shaped +1 set of telescopic glides +1 baking tray with roasting trivet+ 1 food probe (XT Model)

COOKING MODES: 1 bake 2 broil 3 convection 4 convection bake 5 convection broiler 6 pizza

COOKING MODES: 1 defrost 2 dehydrate 3 fast preheat 4 keep warm 5 light 6 proof 7 sabbath mode 8 self clean
9 timer 10 assistant (XT model)



PROF30FSE XV



MAST30FSE XT



PROF30FDE XT



MAST30FDE XV

Specifications and features may vary. Please refer to the manufacturer's website for the latest updates.

PROFESSIONAL &
MASTER SERIES

BUILT-IN OVENS

24" CONVECTION OVEN

PROF24FSEXV

24" Professional Series - Electric Convection Single Oven



- Capacity 2.7 cu.ft
- Cooking Modes: Bake, Bottom heat bake, Broil, Convection, Convection bake, Convection broil, Pizza, Upper heat bake
- Special features: Defrost, Dehydrate, Fast preheat, Light, Proof, Timer
- 5 shelf levels
- Fingerprint free stainless steel
- Bake: 2050 W Broiler: 2400 W Convection: 1800 W
- Flush installation with cabinet doors
- 1 wire shelf flat + 1 wire shelf shaped + 1 baking tray with roasting trivet
- Metal finish knobs with LED display interface
- Soft-motion door hinges
- Triple glass inner oven door
- Dimensions: W 23-3/8" / D 21-13/16" / H 23-3/8"

24" CONVECTION SPEED OVEN (COMBI MICROWAVE)

PROF24SOEX

24" Professional Series - Electric Convection Speed Oven



- Combination of electric convection + grill with microwave
- LED touch control glass interface
- Fingerprint free stainless steel
- Flush front design
- Suitable for undercounter installation
- 5 power levels (200 W to 1000 W)
- Cooking Modes: Broil, Convection, Convection broil, Convection microwave, Microwave, Microwave broil, Pizza
- Soft Motion door hinge
- Special Features: Defrost by time, Defrost by weight, Light, Popcorn, Recipes, Timer
- European convection ring heating element
- 1.35 cu.ft stainless cavity
- Broiler: 1500W Convection: 1600 W
- Cooling fan + 1 roasting trivet
- Glass turntable
- W 23-7/16" / D min. 17-3/4 max. 20-7/16" H 17-15/16"
- Side Panels (2): W 2-31/32" / H 17-29/32"

30" CONVECTION SPEED OVEN

PROF30SOEX

30" Professional Series - Electric Convection Speed Oven

MAST30SOEX

30" Master Series - Electric Convection Speed Oven



MAST30SOEX

- Combination of electric convection + grill with microwave
- Touch LED display
- Fingerprint free stainless steel
- Flush front design
- 1.34 cu.ft stainless cavity
- Cooking Modes: Broil, Convection, Convection broil, Convection microwave, Microwave, Microwave broil, Pizza
- Special Features: Defrost by time, Defrost by weight, Light, Popcorn, Recipes, Timer
- Cooling fan + 1 roasting trivet
- 1 glass turntable tray
- 2 shelf positions
- Suitable for undercounter installation
- Dimensions: W 29-7/8" / D 21-1/4" / H 18-3/4"

30" CONVECTION STEAM OVEN

PROF30CSEX

30" Professional Series - Electric convection Steam oven

MAST30CSEX

30" Master Series - Electric convection Steam oven



PROF30CSEX

- Combination of electric convection + grill with steam (6 functions)
- Touch LED display + knobs
- Fingerprint free stainless steel
- Flush front design
- Suitable for undercounter installation
- 1.10 cu.ft stainless cavity
- 1 stainless tray and 1 perforated stainless tray
- 2 shelf positions
- Dimensions: W 29-3/4" / D 21-17/64" / H 18-3/4"

Specifications and features may vary. Please refer to the manufacturer's website for the latest updates.

PROFESSIONAL &
MASTER SERIES

SPECIALITY OVENS

24" BUILT-IN MICROWAVE OVEN

MO30STANE/16	24" Microwave oven
FR30PROX	30" Width installation - Stainless steel frame required



MO30STANE + FR30PROX

- Style to match with Professional and Master Series
- Capacity 2 cu.ft
- 10 power levels / Power 1100 watts
- Turntable diameter 16"
- White cavity finishing
- Sensor heat, defrost, cook function, timer
- Preset cooking modes
- Dimensions: W 24" / D 21-3/4" / H 12-1/2"
- Frame dimensions: W 29-7/8" / D 1" / H 18-1/4"

OVER THE RANGE MICROWAVE (OTR)

KOTR24MXE	24" Microwave Hood without handle
KOTR30MXE	30" Microwave Hood without handle
KOTR30X	30" Microwave Hood with handle



KOTR30X



KOTR30MXE

- Net Oven Volume 30" 1.6 cu.ft.
- Net Oven Volume 24" 1.4 cu.ft.
- 300 CFM (Low 190 CFM)
- Energy saving LED surface lighting and halogen interior lighting
- Touch controls with LED display
- 10 power levels / Power 1000 watts
- Turntable diameter 13.6" on 30" models only
- 24" XE Dimensions : W 23-7/8" / D 16-11/16" / H 17.5"
- 30" XE Dimensions : W 29-29/32" / D 15-29/32" / H 16-5/16"
- 30" X Dimensions : W 29-13/16" / D 14-7/8" / H 16-1/8"

MICROWAVE DRAWER

MD24X	24" Microwave Drawer
-------	----------------------



- Net Oven Volume 1.2 cu. ft.
- 11 power levels up to 950W max
- Anti-fingerprint stainless steel treatment
- LED digital touch UI
- White cavity with ceramic base
- Undercounter or column installation
- Dimensions: W 23 7/8" / D 21 5/8" / H 15 7/8"



WARMING DRAWER

PROF30WDEX	30" Professional Series - Warming drawer
MAST30WDEX	30" Master Series - Warming drawer



PROF30WDEX



MAST30WDEX

- Capacity 2.3 cu.ft
- Flush front design
- Fingerprint free stainless steel
- Tempered glass bottom
- Soft closing operation
- Power rating 550W
- Temperature: 85° F - 170° F
- Dimensions: W 29-7/8" / D 22" / H 9-7/8"

Specifications and features may vary. Please refer to the manufacturer's website for the latest updates.

PROFESSIONAL &
MASTER SERIES

RANGETOPS & COOKTOPS

GAS RANGETOPS

PROF486GRTBXT	Professional Series - 48" gas rangetop - 6 brass burners + griddle
MAST486GRTBXT	Master Series - 48" gas rangetop - 6 brass burners + griddle
PROF366RTBXT	Professional Series - 36" gas rangetop - 6 brass burners
MAST366RTBXT	Master Series - 36" gas rangetop - 6 brass burners
MAST366RTXE	Master Series - 36" gas rangetop - 6 aluminum burners



PROF366RTBXT



MAST366RTXE

- 19,000 BTU power burner with dual ring flame delivering fastest time-to-boil in class
- Electric griddle: 1100 Watts (48" model only)
- Cast iron professional grade grates
- Propane conversion kit included
- Thermocouple gas shut-off safety
- Wok ring, simmer plate and 3/4" backguard included
- 48" dimensions: W 47-7/8" / H 7-5/8" - D 25-1/4"
- 36" dimensions: W 35-3/4" / H 7-5/8" (with grates) / D 25-1/4"



MAST486GRTBXT

GAS COOKTOPS - FRONT CONTROLS

PROF244CTXV	Professional Series - 24" gas cooktop - 4 aluminum burners - low profile maintop
PROF305CTXV	Professional Series - 30" gas cooktop - 5 aluminum burners - low profile maintop
PROF365CTXV	Professional Series - 36" gas cooktop - 5 aluminum burners - low profile maintop



PROF365CTXV

- Aluminum burners 750-13,000 BTU (24" & 30")
- Aluminum burners 750-18,000 BTU (36")
- Cast iron grates
- Propane conversion kit included
- Thermocouple gas shut-off safety
- Easy to clean one-piece surface
- Slim depth installation compatible
- 36" dimensions: W 35-13/16" / H 1-1/2" / D 21-11/16"
- 24" dimensions: W 23-1/4" / H 1-1/2" / D 19-5/8"



PROF244CTXV

Specifications and features may vary. Please refer to the manufacturer's website for the latest updates.

PROFESSIONAL &
MASTER SERIES

COOKTOPS

GAS COOKTOPS - SIDE CONTROLS

PROF366QBXT	Professional Series - 36" Drop-in Gas Cooktop 6 Brass Burners
MAST366QBXT	Master Series - 36" Drop-in Gas Cooktop 6 Brass Burners
PROF365QBXT	Professional Series - 36" Drop-in Gas Cooktop 5 Brass Burners
MAST365QBXT	Master Series - 36" Drop-in Gas Cooktop 5 Brass Burners
PROF365QXE	Professional Series - 36" Drop-in Gas Cooktop 5 Aluminum Burners
MAST365QXE	Master Series - 36" Drop-in Gas Cooktop 5 Aluminum Burners
PROF304QXE	Professional Series - 30" Drop-in Gas Cooktop 4 Brass Burners
MAST304QBXT	Master Series - 30" Drop-in Gas Cooktop 4 Brass Burners
PROF304QXE	Professional Series - 30" Drop-in Gas Cooktop 4 Aluminum Burners
MAST304QXE	Master Series - 30" Drop-in Gas Cooktop 4 Aluminum Burners



PROF366QBXT



MAST365QBXT



MAST365QXE



PROF304QXE



MAST304QXE

- 18000 BTU power burner with dual ring flame delivering fastest time-to-boil in class
- Cast iron professional grade grates
- Propane conversion kit included
- Thermocouple gas shut-off safety
- Wok ring, simmer plate
- Dimensions - 36" high profile: W 36-13/32" / H 1-3/8" / D 21-1/4"
- 36" low* profile: W 36-13/16" / H 2-11/16" / D 21-1/4"
- 30" low* profile: W 29-7/16" / H 2-5/8" / D 21-1/4"
*Low profile: the height is integrated in countertop

Specifications and features may vary. Please refer to the manufacturer's website for the latest updates.

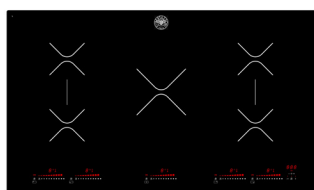
PROFESSIONAL &
MASTER

COOKTOPS

INDUCTION COOKTOP - TOUCH CONTROLS

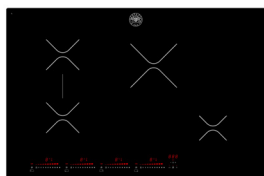
P365IAE	Professional/Master Series - 36" induction cooktop - 5 zones
P304IAE	Professional/Master Series - 30" induction cooktop - 4 zones

- Bevelled ceramic glass
- 14 Power levels
- Timed cooking function for each heating zone
- Digitally controlled sensors and residual heat indicators
- Wear-resistant ceramic glass surface, easy to clean



P365IAE

- Induction zones of up to 5500W
- Max Amp usage: 11100 W - power rating: 48 A
- 2 bridge cooking zones
- 36" dimensions: W 34 5/8" / D 20 15/32" / H 2 7/16"



P304IAE

- Induction zones of up to 3700W
- Max Amp usage: 7400 W - power rating: 32 A
- 1 bridge cooking zone
- 30" dimensions: W 30 11/16" / D 20 15/32" / H 2 7/16"

ELECTRIC COOKTOP

PE304CER	Professional/Master Series - 30" electric cooktop - 4 zones
PE244CER	Professional/Master Series - 24" electric cooktop - 4 zones



- Ceramic glass
- Front Touch Controls
- Residual heat indicator
- ADA Compliant

• **PE304CER**

- 4 zones with flexible heating areas of up to 2300W
- Dimensions: W 30" / H 3-1/8" / D 20-1/2"



• **PE244CER**

- 4 zones with flexible heating areas of up to 1800W
- Dimensions: W 24" / H 3-1/8" / D 20-1/2"

Specifications and features may vary. Please refer to the manufacturer's website for the latest updates.

ALL SERIES

FREESTANDING REFRIGERATION

36" FREESTANDING FRENCH DOOR

REF36FDFIXNV	36" Refrigerator with automatic ice-maker in freezer
REF36FDZXNT	36" Refrigerator with automatic ice-maker with delivery through the door
REF36FDFIXNV	REF36FDFZXNT
<ul style="list-style-type: none"> • 22.5 cu.ft. • Energystar Rated • Precise temperature provided by 3 evaporators and dual air-cooling flow with independent no-frost system. • Internal digital LED touch interface • Top and sidewall LED lights • 1 fixed and 4 height-adjustable refrigerator shelves • 1 large crisper with preset temp • 2 medium crisper with adjustable humidity • 6 gallon sized door bin storage • Automatic ice maker 3.08 lbs / 24h • 45 dbA • Dimensions: W 35-7/8" / H 69-7/8" / D 29" (without handles) 	<ul style="list-style-type: none"> • 21.5 cu.ft. • Energystar Rated • Precise temperature provided by 3 evaporators and dual air-cooling flow with independent no-frost system • Quattro Temp Zone drawer with customize settings • Internal digital LED touch interface • Top and sidewall LED lights • 1 fixed and 4 height-adjustable refrigerator shelves • 2 large crisper with adjustable humidity • 6 gallon sized door bin storage • Automatic ice maker 4.4 lbs / 24h • Internal water dispenser • 43 dbA • ADA Compliant • Dimensions: W 35-7/8" / H 69-7/8" / D 29" (without handles)



REF36FDFIXNV



REF36FDFZXNT
Master Series



REF36FDFZXNT
Professional Series



REF36FDFZXNT
Heritage Series

**THE REFRIGERATOR MUST
BE ORDERED WITH THE
HANDLE KIT.**

36" FRENCH DOOR ACCESSORIES (HANDLE KIT CONTAINS 4 HANDLES)

HK36PROFDX	Handle kit for 36" French Door refrigerator - Professional Series
HK36MASFDX	Handle kit for 36" French Door refrigerator - Master Series
HK36HERFDX	Handle kit for 36" French Door refrigerator - Heritage Series
DS2HERTSB	Décor Set 2 - Matt Satin Black finish
DS2HERTPC	Décor Set 2 - Polished Copper finish
DS2HERTGO	Décor Set 2 - Gold finish
BHFDX	Bottle holder (NV model)
Z300357	Replacement Water Filter (NT model)

Specifications and features may vary. Please refer to the manufacturer's website for the latest updates.

PROFESSIONAL &
MASTER SERIES

FREESTANDING REFRIGERATION

FREESTANDING REFRIGERATOR



REF31BMFIX
+ MASHK24BM

REF31BMFIX 31" Refrigerator - Reversible hinge

- Surround Cooling System - Optimized airflow design with multiple vents on every shelf level for even temperature throughout entire refrigerator
- Total No-Frost system: automated defrosting of evaporator ensures food stays always fresh
- Fridge compartment: 3 shelves - 1 large crisper - Height adjustable
- Door Storage: 2 full-width bins - 4 half-width bins
- Freezer compartment: 2 full-width drawers - 1 half-width drawer
- Fast freeze - 2 air vents in top freezer drawer accelerate temperature drop, helping lock vitamins and maintain flavors.
- Automatic ice-maker
- Interior touch-control with LED screen (on top)
- LED lighting
- Flat front stainless steel doors with no-fingerprint surface treatment
- Dimensions W 31-1/4" / H 69-1/4" / 25-1/2" (without handle)



THE REFRIGERATOR MUST BE ORDERED WITH THE HANDLE KIT (_ _ _ HK24BM).

FREESTANDING REFRIGERATOR



REF24BMFXNV
+ MASHK24BM

REF24BMFXNV 24" Refrigerator - Reversible hinge

- Surround Cooling System - Optimized airflow design with multiple vents on every shelf level for even temperature throughout entire refrigerator
- Total No-Frost system: automated defrosting of evaporator ensures food stays always fresh
- Fridge compartment: 3 shelves - 1 Chrome wine rack - 2 large size with adjustable humidity
- Door Storage: 1 stationary gallon size + 2 height adjustable
- Freezer compartment: 2 drawers + 1 removable shelf
- Fast freeze - 2 air vents in top freezer drawer accelerate temperature drop, helping lock vitamins and maintain flavors.
- Internal digital LED touch interface
- LED lighting
- 10.7 total cu.ft. capacity
- 39 dbA
- Dimensions: W 23-7/16" / H 73-1/4" / D 23-1/4" (without handles)

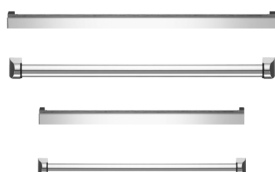


THE REFRIGERATOR MUST BE ORDERED WITH THE HANDLE KIT (_ _ _ HK24BM).

HANDLE KIT FOR REF31BMFIX AND REF24BMFXNV (KIT CONTAINS 2 HANDLES)

PROHK24BM Handle kit for 24" & 31" bottom mount refrigerator - Professional Series

MASHK24BM Handle kit for 24" & 31" bottom mount refrigerator - Master Series



Specifications and features may vary. Please refer to the manufacturer's website for the latest updates.

ALL SERIES



BUILT-IN REFRIGERATION

BUILT-IN BOTTOM MOUNT PANEL READY

REF30BMBZPNV	30" Refrigerator - Panel Ready - Field Reversible Door
<ul style="list-style-type: none"> • 16 cu.ft of total storage capacity • Internal digital LED touch interface • Top and sidewall LED lights • Refrigerator shelves: 1 stationary + 2 height-adjustable • Refrigerator crispers: 1 + 1 with separate temperature control (soft close) • Freezer compartment: 2 drawers (metal) • Door storage: 1 gallon sized + 2 height adjustable bins • Automatic ice maker 3.9 lbs / 24 hrs • Flush or proud installation in 84" high kitchen cabinets • 43 dbA • Dimensions: W 29-3/4" / H 83-9/16" + 1/4" adjustable leveling / D 24-1/4" 	
CTBMPV	Connection Trim for Side-by-Side Installation
Z370001	Replacement Water Filter



REF36PIXL + PROHK36PI

BUILT-IN BOTTOM MOUNT REFRIGERATOR

REF36PIXR	36" Refrigerator - Stainless Panel installed - Right hinge
REF36PIXL	36" Refrigerator - Stainless Panel installed - Left hinge
REF30PIXR	30" Refrigerator - Stainless Panel installed - Right hinge
REF30PIXL	30" Refrigerator - Stainless Panel installed - Left hinge
REF36PRR	36" Refrigerator - Panel ready - Right hinge
REF36PRL	36" Refrigerator - Panel ready - Left hinge
REF30PRR	30" Refrigerator - Panel ready - Right hinge
REF30PRL	30" Refrigerator - Panel ready - Left hinge



- Extra-bright LED lights interior illumination on top and sides
- Automatic settings: Max Cool Fridge, Vacation, Beverage Cooler, SuperIce, IceSize, Sabbath Mode, Water Filter
- Integrated water filter connected to water line ensures regular production of ice cubes of customizable size.
- White Aluminum Interior
- 2 full-width shelves, 2 antibacterial stainless-steel drawers
- Flex Mode: Switch bottom compartment between freezer and refrigerator with one touch.
- Door storage: 3 full-width racks
- Freezer: 1 large drawer, 1 inner drawer, ice tray
- Automatic ice maker with filter (up to 3 lbs / 24 hours)
- Total no frost
- Internal LED touch interface with intuitive controls
- 17.7 cu.ft. capacity (36") - 13.9 cu.ft. capacity (30")

DIMENSIONS

- 30" Panel Ready: W 29 1/2" / H 83 1/2" / D 24"
- 36" Panel Ready: W 35 3/8" / H 83 1/2" / D 24"
- 36" Stainless: W 35 3/8" / H 83 1/2" / D 25" (without handle)
- 30" Stainless: W 29 1/2" / H 83 1/2" / D 25" (without handle)

A HANDLE KIT MUST BE ORDERED FOR THE STAINLESS PANEL INSTALLED REFRIGERATORS:

Specifications and features may vary. Please refer to the manufacturer's website for the latest updates.

ALL SERIES



PRO MASTER HERITAGE

BUILT-IN REFRIGERATION

BOTTOM MOUNT HANDLE KIT FOR REF_ _PIX_ (KIT CONTAINS 2 HANDLES)

PROHK36PI	Handle kit for 36" Built-in refrigerator - Professional Series
MASHK36PI	Handle kit for 36" Built-in refrigerator - Master Series
HERHK36PI	Handle kit for 36" Built-in refrigerator - Heritage Series
PROHK30PI	Handle kit for 30" Built-in refrigerator - Professional Series
MASHK30PI	Handle kit for 30" Built-in refrigerator - Master Series
HERHK30PI	Handle kit for 30" Built-in refrigerator - Heritage Series



REF36RCPRL

BUILT-IN REFRIGERATOR COLUMNS

REF36RCPIXL	36" Built-in Refrigerator column - Stainless - Left swing door
REF36RCPIXR	36" Built-in Refrigerator column - Stainless - Right swing door
REF30RCPIXL	30" Built-in Refrigerator column - Stainless - Left swing door
REF30RCPIXR	30" Built-in Refrigerator column - Stainless - Right swing door
REF24RCPIXL	24" Built-in Refrigerator column - Stainless - Left swing door
REF24RCPIXR	24" Built-in Refrigerator column - Stainless - Right swing door
REF36RCPRL	36" Built-in Refrigerator column - Panel Ready - Left swing door
REF36RCPRR	36" Built-in Refrigerator column - Panel Ready - Right swing door
REF30RCPRL	30" Built-in Refrigerator column - Panel Ready - Left swing door
REF30RCPRR	30" Built-in Refrigerator column - Panel Ready - Right swing door
REF24RCPRL	24" Built-in Refrigerator column - Panel Ready - Left swing door
REF24RCPRR	24" Built-in Refrigerator column - Panel Ready - Right swing door

- Internal LED touch interface with intuitive controls
- Extra-bright LED lights interior illumination on top and sides
- White Aluminum Interior
- 4 full-width shelves, 3 drawers and 3 full-width door shelves
- Lateral airflow cooling system
- Modes: Shopping, Vacation, Sabbath mode
- Door Alarm
- Capacity: 30"-16.84 cu.ft. / 24" -12.64 cu.ft / 18"-8.22 cu.ft

Stainless Dimensions
 36" - H 84" x W 36" x D 24 3/8"
 30" - H 84" x W 30" x D 24 3/8"
 24" - H 84" x W 24" x D 24 3/8"
 Panel Ready Dimensions
 36" - H 84" x W 36" x D 24 1/4"
 30" - H 84" x W 30" x D 24 1/4"
 24" - H 84" x W 24" x D 24 1/4"

Specifications and features may vary. Please refer to the manufacturer's website for the latest updates.

ALL SERIES

BUILT-IN REFRIGERATION

BUILT-IN FREEZER COLUMNS

REF30FCIPIXL	30" Built-in Freezer column - Stainless - Left swing door
REF30FCIPIXR	30" Built-in Freezer column - Stainless - Right swing door
REF24FCIPIXL	24" Built-in Freezer column - Stainless - Left swing door
REF24FCIPIXR	24" Built-in Freezer column - Stainless - Right swing door
REF18FCIPIXL	18" Built-in Freezer column - Stainless - Left swing door
REF18FCIPIXR	18" Built-in Freezer column - Stainless - Right swing door
REF30FCIPRL	30" Built-in Freezer column - Panel Ready - Left swing door
REF30FCIPRR	30" Built-in Freezer column - Panel Ready - Right swing door
REF24FCIPRL	24" Built-in Freezer column - Panel Ready - Left swing door
REF24FCIPRR	24" Built-in Freezer column - Panel Ready - Right swing door
REF18FCIPRL	18" Built-in Freezer column - Panel Ready - Left swing door
REF18FCIPRR	18" Built-in Freezer column - Panel Ready - Right swing door

- Internal LED touch interface with intuitive controls
- Extra-bright LED lights interior illumination on top and sides
- White Aluminum Interior
- 2 full-width shelves, 2 drawers and 2 full-width door shelves
- Automatic Ice Maker (2.2 lbs/24 hrs)

- Lateral airflow cooling system
- Modes: Shopping, Vacation Bottle Cooler, Ice Maker, Water Filter, Super Ice, Sabbath mode.
- Door Alarm
- Ice Tray included
- Capacity: 30"-16.84 cu.ft. / 24"-12.64 cu.ft. / 18"-8.22 cu.ft

Stainless Dimensions
30" - H 84" x W 30" x D 24 3/8"
24" - H 84" x W 24" x D 24 3/8"
18" - H 84" x W 18" x D 24 3/8"

Panel Ready Dimensions
30" - H 84" x W 30" x D 24 1/4"
24" - H 84" x W 24" x D 24 1/4"
18" - H 84" x W 18" x D 24 1/4"

BUILT-IN WINE CELLAR COLUMNS

REF24WCPIXL	24" Built-in Wine Cellar column - Stainless - Left swing door
REF24WCPIXR	24" Built-in Wine Cellar column - Stainless - Right swing door
REF18WCPIXL	18" Built-in Wine Cellar column - Stainless - Left swing door
REF18WCPIXR	18" Built-in Wine Cellar column - Stainless - Right swing door
REF24WCPRL	24" Built-in Wine Cellar column - Panel Ready - Left swing door
REF24WCPRR	24" Built-in Wine Cellar column - Panel Ready - Right swing door
REF18WCPRL	18" Built-in Wine Cellar column - Panel Ready - Left swing door
REF18WCPRR	18" Built-in Wine Cellar column - Panel Ready - Right swing door

- Digital touch control interface inside
- LED lights interior illumination
- White aluminum interior
- 12 wooden wine racks
- Two temperature zones

- Modes: Humidity control, Sabbath mode.
- Door Alarm
- 52 bottle capacity (18")
- 80 bottle capacity (24")

Stainless /Glass Door Dimensions
24" - H 84" x W 24" x D 24 3/8"
18" - H 84" x W 18" x D 24 3/8"

Panel Ready /Glass Door Dimensions
24" - H 84" x W 24" x D 24 1/4"
18" - H 84" x W 18" x D 24 1/4"

A HANDLE KIT MUST BE ORDERED FOR THE STAINLESS PANEL INSTALLED COLUMNS:

Specifications and features may vary. Please refer to the manufacturer's website for the latest updates.

ALL SERIES

BUILT-IN REFRIGERATION



PRO MASTER HERITAGE

COLUMN HANDLE KIT FOR REF_ _ RC / FC / WC (KIT CONTAINS 1 HANDLE)

PROHKCOL	Handle kit for column refrigerator - Professional Series
MASHKCOL	Handle kit for column refrigerator - Master Series
HERHKCOL	Handle kit for column refrigerator - Heritage Series



BUILT-IN SIDE BY SIDE CONNECTION TRIM INSTALL KIT

901470	Connection trim for side-by-side install of stainless steel built-in refrigerators, 30 inches and 36 inches
901469	For panel ready



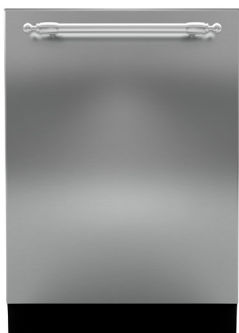
INSTALLATION TRIM KIT

901533	Flange trim kit for replacement installation for REF36PIXL/R
--------	--

ALL SERIES

CLEAN UP

BUILT-IN DISHWASHER



DW24XV + HERHK24DW

DW24XT	24" Dishwasher - Top version - 16 place settings
DW24XV	24" Dishwasher - Value version - 14 place settings

- Fingerprint free stainless steel
- 6 washing cycles: heavy, auto, normal, quick, eco, rinse.
- Washing options: power zone (XT only), extra dry, sani boost, high temp, delay start 24h.
- Sound insulation: 45 db (XT) 48db (XV)
- Place settings: 16 (XT) 14 (XV)
- LED touch controls (concealed)
- Energy star certification
- Food disposer
- Spray arms: 4 (XT, including power zone) 3 (XV)
- Racks: 3 (XT, including flexible top drawer) 2 (XV)
- Turbo drying system (XT only)
- 2 LED lights (XT only)
- Triple-stage filter in stainless steel and plastic
- Dimensions: W 23-3/4" / H 33-3/4"
- D 24-1/2" (without handle)

THE DISHWASHER MUST BE ORDERED WITH THE HANDLE



BUILT-IN DISHWASHER - PANEL READY

DW24PR	24" Dishwasher - 10 place settings
DW18PR	18" Dishwasher - 8 place settings



DW24PR

- Panel ready
- 6 washing cycles: heavy, auto, normal, quick, eco, rinse.
- 4 washing options: sanitize, hi temp, heating dry, energy save
- Sound insulation: 49 dB
- Electronic touch control and LED display (concealed)
- Energy star certification
- End of cycle floor projection indicator light
- Stainless steel interior finish
- 3 spray arms
- 24" dimensions: W 23-5/8" / H 32-1/2" / D* 21-5/8"
- 18" dimensions: W 17-11/16" / H 32-1/2" / D* 21-5/8"



DW18PR

* Without handles or custom cabinet panel

HANDLE MUST BE ORDERED SEPARATELY IF NEEDED



HANDLE FOR DISHWASHERS

PROHK24DWPI	24" Handle Kit for dishwasher - Professional Series
MASHK24DWPI	24" Handle Kit for dishwasher - Master Series
HERHK24DW	24" Handle Kit for dishwasher - Heritage Series
PROHK18DW	18" Handle Kit for dishwasher - Professional Series
MASHK18DW	18" Handle Kit for dishwasher - Master Series
PNL18DW	18" Stainless Steel Panel for dishwasher



Specifications and features may vary. Please refer to the manufacturer's website for the latest updates.

PROFESSIONAL &
MASTER SERIES

VENTILATION

UNDERMOUNT OR WALLMOUNT (DUCT COVER REQUIRED) HOOD

KU48PRO2X/14	48" Canopy hood - 2 motors - 1200 CFM - Stainless baffle filters
KU36PRO2X/14	36" Canopy hood - 2 motors - 1200 CFM - Stainless baffle filters
KU48PRO1X/14	48" Canopy hood - 1 motor - 600 CFM - Aluminum mesh filters
KU36PRO1X/14	36" Canopy hood - 1 motor - 600 CFM - Aluminum mesh filters
KU30PRO1X/14	30" Canopy hood - 1 motor - 600 CFM - Aluminum mesh filters
KU24PRO1X/14	24" Canopy hood - 1 motor - 600 CFM - Aluminum mesh filters



KU36PRO2X/14

- Stainless steel
- Electronic controls with buttons (3 speeds)
- LED lighting (2 motors: 4 lights / 1 motor: 2 lights)

KU48PRO2X/14	W 47-13/16" / D 12" - 22-7/16" / H* 10-1/8"
KU36PRO2X/14	W 35-7/8" / D 12" - 22-7/16" / H* 10-1/8"
KU48PRO1X/14	W 47-13/16" / D 12" - 19-5/16" / H* 10-1/8"
KU36PRO1X/14	W 35-7/8" / D 12" - 19-5/16" / H* 10-1/8"
KU30PRO1X/14	W 29-15/16" / D 12" - 19-5/16" / H* 10-1/8"
KU24PRO1X/14	W 23-15/16" / D 12" - 19-5/16" / H* 10-1/8"

Optional duct covers & Accessories available see pages 28, 29, 32



KU30PRO1X/14

UNDERMOUNT OR WALLMOUNT (DUCT COVER REQUIRED) HOOD

KU36PRO1XV	36" Hood - 1 motor - 400 CFM - Aluminum mesh filters - Value version
KU30PRO1XV	30" Hood - 1 motor - 400 CFM - Aluminum mesh filters - Value version
KU24PRO1XV	24" Hood - 1 motor - 400 CFM - Aluminum mesh filters - Value version

- Stainless steel
- Slider controls (3 speeds)
- 2 LED lights
- Recirculation kit available



KU30PRO1XV

KU36PRO1XV	W 36" / D 17-33/64" / H 8-17/64"
KU30PRO1XV	W 30" / D 17-33/64" / H 8-17/64"
KU24PRO1XV	W 24" / D 17-33/64" / H 8-17/64"

Optional duct covers & Accessories available see pages 28, 29, 32

Specifications and features may vary. Please refer to the manufacturer's website for the latest updates.

ALL SERIES

VENTILATION



CONTEMPORARY WALLMOUNT HOOD

KMC48X	●	48" Canopy Hood - Stainless - Stainless baffle filters
KMC48NE	●	48" Canopy Hood - Matt Black - Stainless baffle filters
KMC48BI	○	48" Canopy Hood - Matt White - Stainless baffle filters
KMC36X	●	36" Canopy Hood - Stainless - Stainless baffle filters
KMC36NE	●	36" Canopy Hood - Matt Black - Stainless baffle filters
KMC36BI	○	36" Canopy Hood - Matt White - Stainless baffle filters
KMC30X	●	30" Canopy Hood - Stainless - Stainless baffle filters
KMC30NE	●	30" Canopy Hood - Matt Black - Stainless baffle filters
KMC30BI	○	30" Canopy Hood - Matt White - Stainless baffle filters

- 600 CFM (1 motor)
- Colour matched duct cover included (installs up to 10' ceilings)
- Electric button control with booster function
- LED light bar for illumination of worktop
- 59 dBA
- Recirculation & reducer kit available see accessory guide for details.
- 48" dimension: W 48" / D 18-1/16" / H 12-5/8"
- 36" dimension: W 36" / D 18-1/16" / H 12-5/8"
- 30" dimension: W 30" / D 18-1/16" D / H 12-5/8"
- Total Height with duct cover 34-3/8" to 52 9/16"



WALLMOUNT CHIMNEY HOOD

KCH24XV	24" Chimney hood - 1 motors - 600 CFM
KCH30XV	30" Chimney hood - 1 motors - 600 CFM
KCH36XV	36" Chimney hood - 1 motors - 600 CFM

- Stainless steel
- 600 CFM (1 motor)
- Push buttons (3 speeds)
- 2 LED lights
- Duct cover included
- 38 dBA
- 24" dimensions: W 24" / 17-11/64" / H 10-25/64"
- 30" dimensions: W 30" / 17-11/64" / H 10-25/64"
- 36" dimensions: W 36" / D 17-11/64" / H 10-25/64"
- Total Height with duct cover: 27-3/4" to 46-11/16"



T-SHAPE WALL & ISLAND HOODS

KT36XT	36" Wallmount hood - 1 motor - 600 CFM - Stainless Steel mesh filters
KT48XT	48" Wallmount hood - 1 motor - 600 CFM - Stainless Steel mesh filters
KT136XT	36" Island hood - 1 motor - 600 CFM - Stainless Steel mesh filters
KT142XT	42" Island hood - 1 motor - 600 CFM - Stainless Steel mesh filters
KT148XT	48" Island hood - 1 motor - 600 CFM - Stainless Steel mesh filters

- 3 speed setting and booster
- Digital CFM reducer to 395/295 CFM
- Energy-saving LED lights
- Electronic push buttons controls
- Sound Level (min) 2.5 Sones
- ADA Compliant Remote Control Included
- Can be installed in recirculation mode with optional charcoal filter accessories
- 36" W Dimensions: W 35-3/8" / D 17-11/16" / H 40-3/8"
- 48" W Dimensions: W 47-3/16" / D 17-11/16" / H 40-3/8"
- 36" I Dimensions: W 35-3/8" / D 26-5/8" / H 39-10/16"
- 42" I Dimensions: W 41-15/16" / D 26-5/8" / H 39-10/16"
- 48" I Dimensions: W 47-3/16" / D 26-5/8" / H 39-10/16"

Specifications and features may vary. Please refer to the manufacturer's website for the latest updates.

ALL SERIES

VENTILATION

T-SHAPE BLACK GLASS WALLMOUNT HOOD

KG48X	48" Wallmount hood - 1 motor - 600 CFM - Stainless steel mesh filters
KG36X	36" Wallmount hood - 1 motor - 600 CFM - Stainless steel mesh filters
KG30X	30" Wallmount hood - 1 motor - 600 CFM - Stainless steel mesh filters



KG30X

- Stainless steel + black glass frontage
- 3 speed touch controls + booster
- 2 LED lights
- 42 dBA
- Duct cover included
- Hardwired
- 48" dimensions: W 47-11/16" / D 18-29/32" / H 3-5/32"
- 36" dimensions: W 35-7/8" / D 18-29/32" / H 3-5/32"
- 30" dimensions: W 30-7/8" / D 18-29/32" / H 3-5/32"
- Total Height with duct cover: 26-31/32" to 44-7/8"

Optional duct covers & accessories available see pages 28, 29, 32

HERITAGE WALLMOUNT HOOD

K48HERTX	48" Wallmount hood - 1 motor - 600 CFM
K36HERTX	36" Wallmount hood - 1 motor - 600 CFM



K36HERTX/KC36HERTNE

- Base unit is Stainless Steel
- Electronic controls (3 speeds)
- 2 LED lights
- Baffle Stainless Steel Filters
- Duct cover included (installs up to 10' ceilings)
- Must be sold with canopy
- 59 dBA
- Chrome utensils bar included with the canopy
- 48" dimensions: W 48" / D 19-11/16"
- 36" dimensions: W 36" / D 19-11/16"
- Total Height (with canopy) 38" 5 16 - 54" 1 16
- Optional charcoal filter kit is see page 32

CANOPY TO COMPLETE ASSEMBLY

KC48HERTX	● 48" Canopy Hood Stainless
KC48HERTNE	● 48" Canopy Hood Black
KC48HERTAV	○ 48" Canopy Hood Ivory
KC36HERTX	● 36" Canopy Hood Stainless
KC36HERTNE	● 36" Canopy Hood Black
KC36HERTAV	○ 36" Canopy Hood Ivory

Specifications and features may vary. Please refer to the manufacturer's website for the latest updates.

ALL SERIES

VENTILATION



KIN36XV



KIN36XT

INSERT HOOD

KIN30XV	30" Insert hood - 1 motor - 560 CFM - Aluminum mesh filters
KIN36XV	36" Insert hood - 1 motor - 560 CFM - Aluminum mesh filters
KIN30XT	30" Insert hood - 1 motor - 600 CFM - Stainless baffle filters
KIN36XT	36" Insert hood - 2 motor - 1200 CFM - Stainless baffle filters
KIN48XT	48" Insert hood - 2 motor - 1200 CFM - Stainless baffle filters

KINxxXV

- 3 speed setting and booster
- Digital CFM reducer to 395/295 CFM
- Energy-saving LED lights
- Electronic push buttons controls
- Sound Level (min) 1.5 Sones
- Can be installed in recirculation mode with optional charcoal filter accessories
- 30" Dimensions: W 27-9/16" / D 11-13/16" / H 13"
- 36" Dimensions: W 33-7/8" / D 11-13/16" / H 13"

KINxxXT

- Dishwasher-safe restaurant style pro baffle filters
- 600 CFM with 3 speed setting and booster
- Digital CFM reducer to 395/295 CFM
- Energy-saving LED lights
- Electronic push buttons controls
- 30" Sound Level (min) 1.5 Sones
- 36 & 48" Sound Level (min) 2.48 Sones
- ADA Compliant Remote Control Included
- Can be installed in recirculation mode with optional charcoal filter accessories
- 30" Dimensions: W 28-3/8" / D 13-3/4" / H 12-15/16"
- 36" Dimensions: W 32-6/8" / D 18 -5/16" / H 11-1/8"
- 48" Dimensions: W 44-9/16" / D 18- 5/16" / H 11-1/8"

VISOR HOOD

KTV30XV	30" Visor downdraft hood - 1 motor - 600 CFM - Aluminum mesh filters
KDV24XV	24" Visor downdraft hood - 1 motor - 300 CFM - Aluminum mesh filters

- Stainless steel
- Slider Controls (3 speeds)
- 2 LED lights
- Power cord connection
- Recirculation available see accessory guide for details.
- Max telescopic extension is 8"3/4
- 30" dimensions: W 30" / D 11" / H 1-5/8' (total H: 12-1/2")
- 24" dimensions: W 23-11/16" / D 11" / H 1-5/8' (total H: 12-1/2")



ALL SERIES

ACCESSORIES



901262 Duct Cover Narrow - Tall - up to 12' ceiling

901281 Duct Cover Narrow - Short - 8-10' ceiling

901263 Duct Cover Medium - KU models

901266 30" Duct Cover Large - KU models

901265 36" Duct Cover Large - KU models

901261 48" Duct Cover Large

901363 Duct Extension for all CONX/14 models

901271 Recirculation Kit for KG48X-KG36X models

901335 Recirculation Kit for KU30PRO1XV model

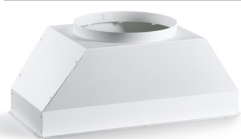
901336 Recirculation Kit for KU36PRO1XV model

901396 Recirculation Kit for KU24PRO1XV model

901453 Charcoal Filters for KTV30PRO1X-KTV24PRO1X models



901264 Air Bracket for KU48-36 PRO 2X models



Z130018 Flow through restrictor
- Reducing performance from 440 or 600 cfm hoods to 300 cfm
- To be installed in hoods that have only 1 motor.

901530 Flow through restrictor for KMC models - 400 CFM

901544 Flow through restrictor for KMC models - 300 CFM

ALL SERIES

ACCESSORIES



901364 Baffle Filters for CONX/14 and HERX/14 models
1 package contains 4 filters

901365 Baffle Filters for KU48-36-24 PRO1X/14 models
1 package contains 4 filters

901366 Baffle Filters for KU30PRO1X/14 model
1 package contains 4 filters



901402 Aluminum Mesh Filters for KU48-36-24 PRO1X/14 & KU36-24 PRO1XV models
1 package contains 1 filter

901403 Aluminum Mesh Filters for KU30PRO1X/14 & KU30PRO1XV models
1 package contains 1 filter

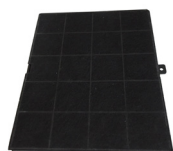
901404 Aluminum Mesh Filters for CONX/14 and HERX/14
1 package contains 1 filter



901394 Charcoal Filter Kit for PRO1X/14 & PRO2X/14 2 required for 2X



901395 Charcoal Filter Kit for CONX/14, and HERTX & PRO2X/14



901430 Charcoal Filter Kit for PRO1XV models

901486 Charcoal Filter Kit for KG CONX models

901531 Charcoal Filter Kit for KMC models

901532 Durable Charcoal Filter Kit for KMC models
(can be washed and reused for up to 3 years)

901397 Charcoal Filters for KIN46-36-30 models

901488 Charcoal Filter Kit for KCH models

Specifications and features may vary. Please refer to the manufacturer's website for the latest updates.

ALL SERIES

ACCESSORIES

TOEKICK PANELS FOR RANGE



TKP48X	48" Toekick panel for Professional and Master Series
TKP36X	36" Toekick panel for Professional and Master Series
TKP30X	30" Toekick panel for Professional and Master Series
TKP24X	24" Toekick panel for Professional and Master Series



TKHERX	Square legs covers 5" wide - set of 2
--------	---------------------------------------

BLACK KNOB KIT



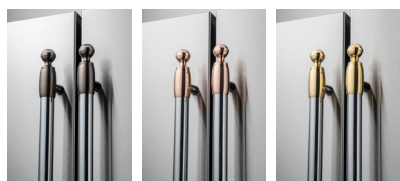
KKMASX	Master Series Black Knob Kit (rubber coated) for New Gas and Dual Fuel Ranges
KKMASINX	Master Series Black Knob Kit (rubber coated) for New Induction Ranges

BACKGUARDS

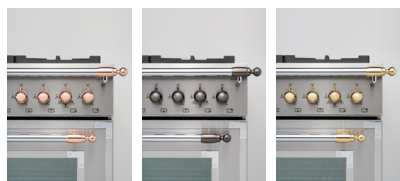


BGH48	4" backguard for 48" Professional and Master Series
BGH36	4" backguard for 36" Professional and Master Series
BGH30	4" backguard for 30" Professional and Master Series
BGH24	4" backguard for 24" Professional and Master Series

HERITAGE SERIES DÉCOR SETS (DS1 CONTAINS 12 X CONTROL KNOBS AND 8 X HANDLE FINIALS AND DS2 CONTAINS 6 HANDLE FINIALS)



DSHERTKHGO	Range & Hood kit - Gold finish
DSHERTKHPC	Range & Hood kit - Polished Copper finish
DSHERTKHSB	Range & Hood kit - Matt Satin Black finish



DS2HERTGO	Refrigerator & Dishwasher kit - Gold finish
DS2HERTPC	Refrigerator & Dishwasher kit - Polished Copper finish
DS2HERTSB	Refrigerator & Dishwasher kit - Matt Satin Black finish
901568	Chrome Flat End Caps For Heritage Series Handle

Specifications and features may vary. Please refer to the manufacturer's website for the latest updates.

ALL SERIES

ACCESSORIES

COOKING



901490 Telescopic glide set for PROF Series 24" wall ovens



901511 Telescopic glide set for PROF/MAST 24" ranges and 30" wall ovens

901471 Telescopic glide set for PROF/MAST/HERT Series ranges 30-36-48"



901272 Porcelain Tray



901273 Glass Tray



CIG36 Cast Iron Griddle for PROF/MAST/HERT Series ranges



901438 Simmer Ring



901439 Wok Ring

9100138 High Altitude Kit

Specifications and features may vary. Please refer to the manufacturer's website for the latest updates.

ALL SERIES

ACCESSORY GUIDE

Range hood Category	Series	Size	Model #	Duct cover	Duct cover extension	Recirculation Kit	Charcoal Filter Kit	Air bracket for 2 in 1 ducting	Baffle Filters	Flow through Restrictor	Remote Control
Cabinet Mount Visor Hood	Professional & Master	24"	KTV24XV				901531 901532 (durable filter)				
		30"	KTV30XV				901531 901532 (durable filter)			Z130018	
Wall Mount	Professional & Master	24"	KCH24XV	Included			901488			Z130018	
		30"	KMC30x	Included			901531 901532 (durable filter)			901544 (300 CFM) 901530 (400 CFM)	
			KCH30XV	Included			901488			Z130018	
			KG30X	Included	901562	901271	901486		Included		
		36"	KMC36x	Included			901531 901532 (durable filter)			901544 (300 CFM) 901530 (400 CFM)	
			KCH36XV	Included			901488			Z130018	
			KG36X	Included	901562	901271	901486		Included		
			K36CONX14	Included	901363	-	901395		901364	Z130018	
		48"	KMC48x	Included			901531 901532 (durable filter)			901544 (300 CFM) 901530 (400 CFM)	
			KG48X	Included	901562	901271	901486		Included		
			K48CONX14	Included	901363	901426	901395		901364		
	Heritage	36"	K36HERTX	Included with Canopy			901395		Included	Z130018	
		48"	K48HERTX	Included with Canopy			901395		Included	Z130018	
Undermount Wall Mount	Professional	24"	KU24PRO1XV	Not Included	901281(standard) 901262 (narrow up to 10')	901396	901430		901365	Z130018	
			KU24PRO1X/14	Not Included	901281(standard) 901262 (narrow up to 10')				901365	Z130018	
		30"	KU30PRO1XV	Not Included	901281(standard) 901262 (narrow up to 10') 901263 (medium) 901266 (full width)	901335	901430		901366	Z130018	
			KU30PRO1X/14	Not Included	901281(standard) 901262 (narrow up to 10') 901263 (medium) 901266 (full width)	-	901394		901366	Z130018	
		36"	KU36PRO1XV	Not Included	901281(standard) 901262 (narrow up to 10') 901263 (medium) 901265 (full width)	901336	901430		901365	Z130018	
			KU36PRO1X/14	Not Included	901281(standard) 901262 (narrow up to 10') 901263 (medium) 901265 (full width)		901394		901365	Z130018	
			KU36PRO2X/14	Not Included	901263 (medium) 901265 (full width)		901394*	901264	Included		
		48"	KU48PRO1X/14	Not Included	901281(standard) 901262 (narrow up to 10') 901263 (medium) 901261 (full width)		901394		901365	Z130018	
			KU48PRO2X14	Not Included	901263 (medium) 901261 (full width)		901394*	901264	Included		
Inserts	ALL	30"	KIN30XV				901531 901532 (durable filter)				901575
		36"	KIN36XV				901531 901532 (durable filter)				901575
		30"	KIN30XT				901531 901532 (durable filter)	Included	Included		Included
		36"	KIN36XT				901531 901532 (durable filter)	Included	Included		Included
		48"	KIN48XT				901531 901532 (durable filter)	Included	Included		Included

*2 charcoal filter kits required for 2 motor models

Specifications and features may vary. Please refer to the manufacturer's website for the latest updates.

ALL SERIES

COLORS

COLOR FINISH		SERIES
STAINLESS STEEL		All Series
NERO	Glossy Black	Professional
BIANCO	Glossy White	Professional
ROSSO	Glossy Red	Professional
GIALLO	Glossy Yellow	Professional
ARANCIO	Glossy Orange	Professional
BIANCO OPACO	Matt White	Master
NERO OPACO	Matt Black	Master & Heritage
AVORIO	Matt Ivory	Heritage



Nero



Bianco



Stainless



Rosso



Giallo



Arancio



Stainless Steel



Avorio



Nero



Stainless Steel

Specifications and features may vary. Please refer to the manufacturer's website for the latest updates.

This image shows a single sheet of white paper with horizontal ruling lines. The lines are evenly spaced and run across the width of the page. There are no margins, text, or other markings on the paper.

NOTES

This image shows a single sheet of white paper with horizontal ruling lines. The lines are evenly spaced and run across the width of the page. There are no margins, text, or other markings on the paper.

Specifications and features may vary. Please refer to the manufacturer's website for the latest updates.

PRODUCT GUIDE 2022



T 800 361 0799 F 450 682 7943

www.distinctive-online.com info@distinctive-online.com

HEAD OFFICE & WAREHOUSE

2025 Cunard Street
Laval, QC H7S 2N1

PARTS & SERVICE

service@distinctive-online.com

ORDER DESK

orderdesk@distinctive-online.com