



# ZEPHYR

## PRODUCT GUIDE 2021

Updated June 2021

## VENTILATION

## WHY BUY ZEPHYR VENTILATION?

## OVERVIEW

- 1 Leader in Technology and Innovation
- 2 Highest Quality
- 3 Quietest Hoods in the Industry
- 4 Duct Cover Extension Option up to 12' Ceilings
- 5 Quick-Lock Installation System for Island models – the easiest in the industry
- 6 Versatile Outdoor Options

## 1. TECHNOLOGY AND INNOVATION

**ZEPHYR CONNECT:**

An exclusive app that allows you to control the range hood remotely or by connecting to your smart devices such as Amazon Alexa or Google Home smart speaker for voice activation.

**LUMILIGHT LED LIGHT BULBS & BRITESTRIP™ LED LIGHTING:**

25,000 hour lifetime; first dimmable LED; natural 3,000k color output; integrated throughout more of our products.

**POWERWAVE™ BLOWER TECHNOLOGY:**

Designed to deliver best-in-class performance with unparalleled quiet operation, inspired by three-phase AC power. This system allows for a dual internal blower to achieve 1,300 CFM in certain models.

**AIRFLOW CONTROL TECHNOLOGY™ (ACT™):**

Allows for restricted CFM levels based on Make-Up Air requirements.

**ADA COMPLIANT:**

RF Wireless Remote Control

## 2. HIGH QUALITY

Zephyr uses high quality stainless steel that is welded and polished so there are no sharp edges or seams.

## 3. QUIETEST HOODS IN THE INDUSTRY

Zephyr ventilation products can get as low as 0.5 sones—that's the same level of sound as a soft whisper. Or as low as 1 sone—the same as a refrigerator hum.

## 4. DUCT COVER EXTENSION OPTION UP TO 12 FEET

All chimney wall and island range hoods can reach ceiling heights of up to 12' with the optional Duct Cover Extension.

## 5. QUICK-LOCK INSTALLATION SYSTEM

Install an island range hood in 3 easy steps—what used to take 3+ people, now only takes 2! It's the easiest island range hood installation system in the industry.

## 6. VERSATILE OUTDOOR OPTIONS

From inserts to wall models, Zephyr outdoor ventilation systems all share the same great features: 304 stainless steel; pro baffle filters; powerful blowers up to 1,200 CFM; large depth and range of widths to cover even the largest of grills.

**COLLECTIONS**

CORE  
 PRO  
 DESIGNER  
 BRISAS BY ZEPHYR

**MODEL + INSTALL TYPE PAGE**
**VENTILATION**
**UNDER-CABINET**

Breeze I (AK11)		4
Breeze II (AK12)	BLACK SS	4
Cyclone (AK65)	BLACK SS	5
Genova (ZGE)		6
Gust (AK71)		7
Hurricane (AK25)		5
Pisa (ZPI)		6
Pyramid (ZPY)		6
Tempest I (AK70)		7
Tidal I (AK73)	ZEPHYR CONNECT	8
Typhoon (AK21)		5

**WALL**

Anzio (ZAN)	BLACK SS	11
Apex (DAP)		16
Cypress (AK78)	OUTDOOR	29
Horizon (DHZ)		18
Layers (DLA)		17
Lucé (ZLU)		14
Mesa (DME)		17
Milano (ZMI)	ZEPHYR CONNECT	15
Modena (ZMO)		14
Okeanito (COK)		18
Ombra (ZOM)	BLACK SS	10
Ravenna (ZRV)	BLACK SS	11
Roma (ZRO)		11
Roma Groove (ZRG)		12
Roma Pro (ZRP)	POWERWAVE™	13
Savona (ZSA)	BLACK SS	10
Siena (ZSI)		12
Siena ES (ZSI)	ENERGY STAR	12
Siena Pro (ZSP)		12
Tempest II (AK75)		9
Tidal II (AK74)	ZEPHYR CONNECT	8
Titan (AK76)	POWERWAVE™	13
Venezia (ZVE)	ZEPHYR CONNECT	15
Verona (ZVO)		14
Vista (DVS)		16

**ISLAND**

Anzio (ZAZ)		19
Lucé (ZLC)		20
Lux (ALU)		23
Milano (ZML)	ZEPHYR CONNECT	21
Modena (ZMD)		20

**MODEL + INSTALL TYPE PAGE**
**VENTILATION cont.**
**ISLAND**

Napoli (ZNA)	ZEPHYR CONNECT	21
Ravenna (ZRE)	BLACK SS	19
Roma (ZRM)		19
Siena Pro (ZSL)		22
Titan (AK77)	POWERWAVE™	22
Trapeze (CTP)		22
Verona (ZVN)		20
Vista (DVL)		21

**DOWNDRAFT**

Lift (DLI)	24
Sorrento (DD1)	24

**INSERT**

Monsoon (AK94)	ZEPHYR CONNECT	28
Monsoon I (AK92)		28
Monsoon II (AK93)		28
Monsoon Mini (AK91)		27
Monsoon Mini II (AK95)		27
Spruce (AK98)	OUTDOOR	29
Tornado Glo (AK85)		26
Tornado I (AK81)		25
Tornado II (AK82)		26
Tornado III (AK83)		26
Tornado Mini (AK84)		25
Twister (AK80)		25
Twister ES (AK80)	ENERGY STAR	25
Vortex (AK90)		27

**BRISAS BY ZEPHYR - VENTILATION 30**
**BRISAS BY ZEPHYR 31**

Beverage Coolers  
 Wine Coolers

**MISCELLANEOUS**

Accessories	32
-------------	----

UNDER-CABINET

CORE COLLECTION



BREEZE I

MODEL	FINISH	SIZE W x D
<b>BREEZE I</b> 250 CFM Range Hood w/ Slide Controls, Recirculating Option, and LED Lighting		
AK1124BW	W	24" x 20-3/32"
AK1124BS	S	24" x 20-3/32"
AK1100BB	B	30" x 20-3/32"
AK1100BW	W	30" x 20-3/32"
AK1100BS	S	30" x 20-3/32"
AK1136BB	B	36" x 20-3/32"
AK1136BW	W	36" x 20-3/32"
AK1136BS	S	36" x 20-3/32"
<ul style="list-style-type: none"> <li>•Max. Blower CFM: 250</li> <li>•5-1/2" body height</li> <li>•3-speed mechanical slide controls</li> <li>•3-1/4"x10" vertical ducting</li> <li>•3-1/4"x10" horizontal ducting</li> <li>•Extra-wide aluminum mesh filters</li> <li>•6W LumiLight LED lights</li> <li>•Dual-level lighting</li> </ul>		
<b>Accessories</b>		
0AK11-21001	Recirculating Kit (w/ charcoal filter)	
0AK11-20001	Charcoal Filter Replacement (2 per kit)	

CORE COLLECTION



BREEZE II

MODEL	FINISH	SIZE W x D
<b>BREEZE II</b> 400 CFM Range Hood w/ Electronic Controls and LED Lighting		
AK1200CB	B	30" x 20"
AK1200CW	W	30" x 20"
AK1200CS	S	30" x 20"
AK1200CBS	Blk SS	30" x 20"
AK1236CB	B	36" x 20"
AK1236CW	W	36" x 20"
AK1236CS	S	36" x 20"
AK1236CBS	Blk SS	36" x 20"
<ul style="list-style-type: none"> <li>•Max. Blower CFM: 400</li> <li>•5-1/2" body height</li> <li>•Auto delay-off</li> <li>•7" or 3-1/4"x10" vertical ducting</li> <li>•3-1/4"x10" horizontal ducting</li> <li>•3-speed electronic controls</li> <li>•6W LumiLight LED lights</li> <li>•Dual-level lighting</li> <li>•Extra-wide aluminum mesh filters</li> </ul>		
<b>Accessories</b>		
ZRC-0012	Recirculating Kit (w/ charcoal filter)	
0AK11-20001	Charcoal Filter Replacement (2 per kit)	
MUA006A	Make-Up Air Kit	

Finish: (B)-Black (W)-White (S)-Stainless Steel (Blk SS)-Black Stainless Steel  
Warranty: 3 years non-consumable parts, 1 year labor

UNDER-CABINET



CORE COLLECTION

CYCLONE

MODEL	FINISH	SIZE W x D
<b>CYCLONE 600 CFM Self-Cleaning Hood w/ Slide Controls and LED Lighting</b>		
AK6500CB	B	30" x 22-1/4"
AK6500CW	W	30" x 22-1/4"
AK6500CS	S	30" x 22-1/4"
AK6500CBS	Blk SS	30" x 22-1/4"
AK6536CB	B	36" x 22-1/4"
AK6536CW	W	36" x 22-1/4"
AK6536CS	S	36" x 22-1/4"
AK6536CBS	Blk SS	36" x 22-1/4"
AK6542CS	S	42" x 22-1/4"
<ul style="list-style-type: none"> <li>•Max. Blower CFM: 600</li> <li>•6-3/8" body height</li> <li>•3-speed mechanical slide controls</li> </ul>		
<ul style="list-style-type: none"> <li>•6" or 3-1/4"x10" vertical ducting</li> <li>•3-1/4"x10" horizontal ducting</li> <li>•Self cleaning</li> </ul>		
<ul style="list-style-type: none"> <li>•6W LumiLight LED lights</li> <li>•Dual-level lighting</li> </ul>		
<b>Accessories</b>		
MUA006A	Make-Up Air Kit	



CORE COLLECTION

HURRICANE

ACT™

MODEL	FINISH	SIZE W x D
<b>HURRICANE 695 CFM Self-Cleaning Hood w/ Airflow Control Technology (ACT™) and LED Lighting</b>		
AK2500CB	B	30" x 22-1/8"
AK2500CW	W	30" x 22-1/8"
AK2500CS	S	30" x 22-1/8"
AK2536CB	B	36" x 22-1/8"
AK2536CW	W	36" x 22-1/8"
AK2536CS	S	36" x 22-1/8"
<ul style="list-style-type: none"> <li>•Max. Blower CFM: 695</li> <li>•ACT Max. Blower CFM: 390, 290</li> <li>•7" body height</li> <li>•Self cleaning</li> </ul>		
<ul style="list-style-type: none"> <li>•7" or 3-1/4"x10" vertical ducting</li> <li>•3-1/4"x10" horizontal ducting</li> <li>•3-speed electronic touch controls</li> </ul>		
<ul style="list-style-type: none"> <li>•6W LumiLight LED lights</li> <li>•Dual-level lighting</li> <li>•Auto delay-off</li> </ul>		
<b>Accessories</b>		
MUA008A	Make-Up Air Kit	



CORE COLLECTION

TYPHOON

ACT™

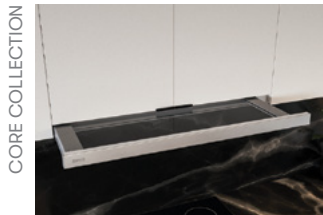
MODEL	FINISH	SIZE W x D
<b>TYPHOON 850 CFM Self-Cleaning Hood with LED Lighting and ACT™</b>		
AK2100CB	B	30" x 20-3/4"
AK2100CW	W	30" x 20-3/4"
AK2100CS	S	30" x 20-3/4"
AK2136CB	B	36" x 20-3/4"
AK2136CW	W	36" x 20-3/4"
AK2136CS	S	36" x 20-3/4"
AK2142CS	S	42" x 20-3/4"
AK2148CS	S	48" x 20-3/4"
<ul style="list-style-type: none"> <li>•Max. Blower CFM: 850</li> <li>•ACT Max. Blower CFM: 390, 290</li> <li>•7-7/8" body height</li> <li>•Self cleaning</li> </ul>		
<ul style="list-style-type: none"> <li>•7" or 3-1/4"x10" vertical ducting</li> <li>•3-1/4"x10" horizontal ducting</li> <li>•6-speed capacitive touch controls</li> </ul>		
<ul style="list-style-type: none"> <li>•6W LumiLight LED lights</li> <li>•Tri-level lighting</li> <li>•Auto delay-off</li> </ul>		
<b>Accessories</b>		
MUA008A	Make-Up Air Kit	

Finish: (B)-Black (W)-White (S)-Stainless Steel (Blk SS)-Black Stainless Steel  
Warranty: 10 years non-consumable parts, 1 year labor

UNDER-CABINET



PYRAMID



PISA



GENOVA

MODEL	FINISH	SIZE W x D
<b>PYRAMID</b>	400 CFM	Pyramid-Shaped Hood w/ Perimeter Aspiration System and LED Lighting
ZPY-E30BS	S	30" x 21"
ZPY-E36BS	S	36" x 21"

MODEL	FINISH	SIZE W x D
<b>PYRAMID</b>	290 CFM	Pyramid-Shaped Hood w/ Perimeter Aspiration System and LED Lighting
ZPY-E30BS290	S	30" x 21"

- Max. Blower CFM: 400 or 290
- 7-3/8" body height
- 3-speed mechanical slide controls
- Perimeter aspiration system
- 7" or 3-1/4"x10" vertical ducting
- 3-1/4"x10" horizontal ducting
- 6W LumiLight LED lights
- Dual-level lighting
- Aluminum mesh filters

Accessories	
ZRC-00PY	Recirculating Kit (w/ charcoal filters)
ZOF-C009	Charcoal Filter Replacement (each)
MUA006A	Make-Up Air Kit

MODEL	FINISH	SIZE W x D
<b>PISA</b>	500 CFM	Designer Hood w/ Sliding Glass and LED Lighting

ZPI-E24BG	S* w/ Glass	24" x 18-3/4"
ZPI-E24BW	W* w/ Glass	24" x 18-3/4"
ZPI-E30BG	S* w/ Glass	30" x 18-3/4"
ZPI-E30BW	W* w/ Glass	30" x 18-3/4"
ZPI-E36BG	S* w/ Glass	36" x 18-3/4"

MODEL	FINISH	SIZE W x D
<b>PISA</b>	290 CFM	Designer Hood w/ Sliding Glass and LED Lighting

ZPI-E24BG290	S* w/ Glass	24" x 18-3/4"
ZPI-E24BW290	W* w/ Glass	24" x 18-3/4"
ZPI-E30BG290	S* w/ Glass	30" x 18-3/4"
ZPI-E30BW290	W* w/ Glass	30" x 18-3/4"
ZPI-E36BG290	S* w/ Glass	36" x 18-3/4"

- Max. Blower CFM: 500 or 290
- 1-1/2" body height\*\*
- Sliding glass canopy
- 6" round vertical ducting
- 6" round horizontal ducting
- 3-speed mechanical slide controls
- 6W LumiLight LED lights
- Dual-level lighting
- Aluminum mesh filter

Accessories	
ZRC-00PI	Recirculating Kit (w/ charcoal filters)
ZOF-C0PI	Charcoal Filter Replacement (each)
MUA006A	Make-Up Air Kit

\*Refers to handle color. Body is painted gray.  
\*\*A 9-9/16" blower housing is installed in the upper cabinet.

MODEL	FINISH	SIZE W x D
<b>GENOVA</b>	500 CFM	Designer Hood w/ Smoke Gray Sliding Glass

ZGE-E30AS	S w/ Glass	30" x 18-5/8"
ZGE-E36AS	S w/ Glass	36" x 18-5/8"

MODEL	FINISH	SIZE W x D
<b>GENOVA</b>	290 CFM	Designer Hood w/ Smoke Gray Sliding Glass

ZGE-E30AS290	S w/ Glass	30" x 18-5/8"
ZGE-E36AS290	S w/ Glass	36" x 18-5/8"

- Max. Blower CFM: 500 or 290
- 3" body height\*
- 3-speed electronic touch controls
- 6" round vertical ducting
- Sliding glass canopy
- Remote control option
- 50W halogen lights
- Dual-level lighting
- Aluminum mesh filter

Accessories	
ZRC-00GE	Recirculating Kit (return air vent & charcoal filter)
ZOF-C0GE	Charcoal Filter Replacement (each)
ZOB0040	Bloom™ GU10 LED (6W, 3000K)
14000005	RF Wireless Remote Control
MUA006A	Make-Up Air Kit

\*An 11" blower housing is installed in the upper cabinet.

Finish: (W)-White (S)-Stainless Steel  
Warranty: 3 years non-consumable parts, 1 year labor

UNDER-CABINET

CORE COLLECTION



GUST

MODEL	FINISH	SIZE W x D
<b>GUST 400 CFM 7-3/8in Tall Euro-Pro Hood w/ Baffle Filters and LED Lighting</b>		
AK7100BS-BF	S	30" x 21"
AK7136BS-BF	S	36" x 21"
<b>GUST 290 CFM 7-3/8in Tall Euro-Pro Hood w/ Baffle Filters and LED Lighting</b>		
AK7100BS290-BF	S	30" x 21"
AK7136BS290-BF	S	36" x 21"
<ul style="list-style-type: none"> <li>•Max. Blower CFM: 400 or 290</li> <li>•7-3/8" body height</li> <li>•3-speed mechanical slide controls</li> <li>•7" or 3-1/4"x10" vertical ducting</li> <li>•3-1/4"x10" horizontal ducting</li> <li>•Baffle filters</li> <li>•6W LumiLight LED lights</li> <li>•Dual-level lighting</li> </ul>		
<b>Accessories</b>		
ZRC-0071	Recirculating Kit (w/ charcoal filters)	
ZOF-C005	Charcoal Filter Replacement (each)	
MUA006A	Make-Up Air Kit	

PRO COLLECTION



TEMPEST I  
ACT™



shown with recirculating kit

MODEL	FINISH	SIZE W x D
<b>TEMPEST I 650 CFM 11in Tall Pro-Style Hood w/ LED Lighting and ACT™</b>		
AK7000CS	S	30" x 22-1/2"
AK7036CS	S	36" x 22-1/2"
AK7042CS	S	42" x 22-1/2"
AK7048CS	S	48" x 22-1/2"
<ul style="list-style-type: none"> <li>•Max. Blower CFM: 650 (included)</li> <li>•Max. Blower CFM: 1,200 (optional)</li> <li>•ACT Max. Blower CFM: 390, 290</li> <li>•11" body height</li> <li>•Auto delay-off</li> <li>•8" or 10" round vertical ducting</li> <li>•8" or 3-1/4"x10" horizontal ducting</li> <li>•6-speed electronic touch controls</li> <li>•CleanAir function</li> <li>•6W LumiLight LED lights</li> <li>•Dual-level lighting</li> <li>•Pro baffle filters</li> <li>•Wireless remote option</li> </ul>		
<b>Accessories and Blowers</b>		
AK0720	12" Duct Cover (For AK7000CS)	
AK0726	12" Duct Cover (For AK7036CS)	
AK0722	12" Duct Cover (For AK7042CS)	
AK0728	12" Duct Cover (For AK7048CS)	
AK1720	24" Duct Cover (For AK7000CS)	
AK1726	24" Duct Cover (For AK7036CS)	
AK1722	24" Duct Cover (For AK7042CS)	
AK1728	24" Duct Cover (For AK7048CS)	
ZRC-7000C*	Recirculating Kit (For AK7000CS, w/ charcoal filters)	
ZRC-7036C*	Recirculating Kit (For AK7036CS, w/ charcoal filters)	
ZRC-7042C*	Recirculating Kit (For AK7042CS, w/ charcoal filters)	
ZRC-7048C*	Recirculating Kit (For AK7048CS, w/ charcoal filters)	
ZOF-C002	Charcoal Filter Replacement (each)	
PBD-1200A**	1,200 CFM Internal Blower Kit (10" round duct)	
14000005	RF Wireless Remote Control	
MUA008A	Make-Up Air Kit (650 CFM)	
MUA010A	Make-Up Air Kit (1,200 CFM)	

\*ZRC-70xxC recirculating kits are compatible with 650-CFM internal blower only (blower included with hood). ZRC-70xxC includes a 4-inch tall return-air box, so please plan your installation accordingly.

\*\*PBD-1200A is a dual internal blower kit with a single blower and two blower openings. To complete the kit you must remove the blower from the hood and install it into the PBD-1200A kit.

**NOTE:** PBD-1200A blower is only compatible with models AK7036CS, AK7042CS and AK7048CS.

Finish: (S)-Stainless Steel

Warranty: 3 years non-consumable parts, 1 year labor

UNDER-CABINET / WALL

PRO COLLECTION



TIDAL I



shown with recirculating kit

PRO COLLECTION



TIDAL II



MODEL	FINISH	SIZE W x D
<b>TIDAL I</b> 700 CFM 11in Tall Pro-Style Hood w/ Zephyr Connect + PowerWave™ Blower		

AK7300AS	S	30" x 22-1/2"
AK7336AS	S	36" x 22-1/2"

- Max. Blower CFM: 700 (included)
- Max. Blower CFM: 1,300 (optional)
- ACT Max. Blower CFM: 590, 390, 290
- 11" body height
- Zephyr Connect app compatible
- 8" or 10" round vertical ducting
- 8" or 3-1/4"x10" horizontal ducting
- 6-speed proximity controls
- CleanAir function
- 6W LumiLight LED lights
- Tri-level lighting
- Pro baffle filters
- Auto delay-off

**Accessories and Blowers**

PBD-1300B*	1,300 CFM Internal Blower Kit (10" round duct)	
AK0720	12" Duct Cover (For AK7300AS)	
AK0726	12" Duct Cover (For AK7336AS)	
AK1720	24" Duct Cover (For AK7300AS)	
AK1726	24" Duct Cover (For AK7336AS)	
ZRC-7000C**	Recirculating Kit (For AK7300AS, w/ charcoal filters)	
ZRC-7036C**	Recirculating Kit (For AK7336AS, w/ charcoal filters)	
Z0F-C002	Charcoal Filter Replacement (each)	
14000005	RF Wireless Remote Control	
MUA008A	Make-Up Air Kit (700 CFM)	
MUA010A	Make-Up Air Kit (1,300 CFM)	

MODEL	FINISH	SIZE W x D
<b>TIDAL II</b> 700 CFM 18in Tall Pro-Style Hood w/ Zephyr Connect + PowerWave™ Blower		

AK7400AS	S	30" x 24"
AK7436AS	S	36" x 24"
AK7448AS	S	48" x 24"

- Max. Blower CFM: 700 (included)
- Max. Blower CFM: 1,300 (optional)
- ACT Max. Blower CFM: 590, 390, 290
- Zephyr Connect app compatible
- 8" or 10" round vertical ducting
- 8", 10" or 3-1/4"x10" horizontal ducting
- 6-speed proximity controls
- CleanAir function
- 6W LumiLight LED lights
- Tri-level lighting
- Pro baffle filters
- Auto delay-off

**Accessories and Blowers**

PBD-1300B*	1,300 CFM Internal Blower Kit (10" round duct)	
AK0720	12" Duct Cover (For AK7400AS)	
AK0726	12" Duct Cover (For AK7436AS)	
AK0728	12" Duct Cover (For AK7448AS)	
AK1720	24" Duct Cover (For AK7400AS)	
AK1726	24" Duct Cover (For AK7436AS)	
AK1728	24" Duct Cover (For AK7448AS)	
ZRC-7000C**	Recirculating Kit (For AK7400AS, w/ charcoal filters)	
ZRC-7036C**	Recirculating Kit (For AK7436AS, w/ charcoal filters)	
ZRC-7048C**	Recirculating Kit (For AK7448AS, w/ charcoal filters)	
Z0F-C002	Charcoal Filter Replacement (each)	
14000005	RF Wireless Remote Control	
MUA008A	Make-Up Air Kit (700 CFM)	
MUA010A	Make-Up Air Kit (1,300 CFM)	

\*PBD-1300B is a dual internal blower kit with a single blower and two blower openings. To complete the kit you must remove the blower from the hood and install it into the PBD-1300B kit.

**NOTE:** PBD-1300B blower is not compatible with the AK7300AS model.

\*\*ZRC-70xxC recirculating kits are compatible with 700-CFM internal blower only (blower included with hood). ZRC-70xxC includes a 4-inch tall return-air box, so please plan your installation accordingly.



**DID YOU KNOW** Zephyr Connect is an exclusive app that allows you to control the range hood remotely from anywhere with an easy-to-use interface and enhanced product features. Change the fan speed, set the delay-off, turn lights on/off, and more. Connect to your smart devices such as Amazon Alexa or Google Home smart speakers for voice activation and hands free operation. Available on the App Store or Google Play.

Finish: (S)-Stainless Steel

Warranty: 3 years non-consumable parts, 1 year labor



WALL

PRO COLLECTION



TEMPEST II  
ACT™

MODEL	FINISH	SIZE W x D
<b>TEMPEST II 650 CFM 18in Tall Pro-Style Hood w/ LED Lighting and ACT™</b>		
AK7500CS	S	30" x 24"
AK7536CS	S	36" x 24"
AK7542CS	S	42" x 24"
AK7548CS	S	48" x 24"
AK7554CS	S	54" x 24"

- |   |  |  |
|---|--|--|
| <ul style="list-style-type: none"> <li>•Max. Blower CFM: 650 (included)</li> <li>•Max. Blower CFM: 1,200 (optional)</li> <li>•ACT Max. Blower CFM: 390, 290</li> <li>•Wireless remote option</li> </ul> | <ul style="list-style-type: none"> <li>•8" or 10" round vertical ducting</li> <li>•8", 10" or 3-1/4"x10" horizontal ducting</li> <li>•6-speed electronic touch controls</li> <li>•CleanAir function</li> </ul> | <ul style="list-style-type: none"> <li>•6W LumiLight LED lights</li> <li>•Dual-level lighting</li> <li>•Pro baffle filters</li> <li>•Auto delay-off</li> </ul> |
|---|--|--|

**Accessories and Blowers**

AK0720	12" Duct Cover (For AK7500CS)
AK0726	12" Duct Cover (For AK7536CS)
AK0722	12" Duct Cover (For AK7542CS)
AK0728	12" Duct Cover (For AK7548CS)
AK0724	12" Duct Cover (For AK7554CS)
AK1720	24" Duct Cover (For AK7500CS)
AK1726	24" Duct Cover (For AK7536CS)
AK1722	24" Duct Cover (For AK7542CS)
AK1728	24" Duct Cover (For AK7548CS)
AK1724	24" Duct Cover (For AK7554CS)
ZRC-7000C*	Recirculating Kit (For AK7500CS, w/ charcoal filters)
ZRC-7036C*	Recirculating Kit (For AK7536CS, w/ charcoal filters)
ZRC-7042C*	Recirculating Kit (For AK7542CS, w/ charcoal filters)
ZRC-7048C*	Recirculating Kit (For AK7548CS, w/ charcoal filters)
ZOF-C002	Charcoal Filter Replacement (each)
PBD-1200A**	1,200 CFM Internal Blower Kit (10" round duct)
14000005	RF Wireless Remote Control
MUA008A	Make-Up Air Kit (650 CFM)
MUA010A	Make-Up Air Kit (1,200 CFM)

\*ZRC-70xxC recirculating kits are compatible with 650-CFM internal blower only (blower included with hood). ZRC-70xxC includes a 4-inch tall return-air box, so please plan your installation accordingly.

\*\*PBD-1200A is a dual internal blower kit with a single blower and two blower openings. To complete the kit you must remove the blower from the hood and install it into the PBD-1200A kit.

Finish: (S)-Stainless Steel

Warranty: 3 years non-consumable parts, 1 year labor

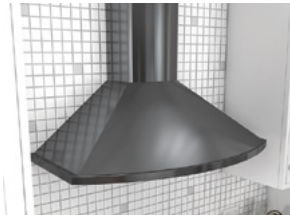
WALL

CORE COLLECTION



OMBRA  
ACT™

CORE COLLECTION



SAVONA  
ACT™

MODEL	FINISH	SIZE W x D
<b>OMBRA</b> 600 CFM Traditional Wall Hood w/ Airflow Control Technology (ACT™) and LED Lighting		

ZOM-E30BS	S	30" x 19-3/4"
ZOM-E30BBS	Blk SS	30" x 19-3/4"
ZOM-E36BS	S	36" x 19-3/4"
ZOM-E36BBS	Blk SS	36" x 19-3/4"

- Max. Blower CFM: 600
- ACT Max. Blower CFM: 390, 290
- Auto delay-off
- 4-speed capacitive touch controls
- 6" round vertical ducting
- Accommodates 9"4" ceiling height
- 6W LumiLight LED lights
- Dual-level lighting
- Aluminum mesh filters

**Accessories**

ZRC-01OM	Recirculating Kit (w/ charcoal filters)
ZOF-C091	Charcoal Filter Replacement (each)
Z1C-01OMS	Stainless Steel Duct Cover Extension, (For up to a 12' ceiling)
Z1C-01OMBS	Black SS Duct Cover Extension, (For up to a 12' ceiling)
MUA006A	Make-Up Air Kit
ZOF-B002	Hybrid Baffle Filter Kit (2 filters)

MODEL	FINISH	SIZE W x D
<b>SAVONA</b> 685 CFM Classic Curved Body Wall Hood w/ Airflow Control Technology (ACT™)		

ZSA-E30DB	B	30" x 19-1/2"
ZSA-E30DW	W	30" x 19-1/2"
ZSA-E30DS	S	30" x 19-1/2"
ZSA-E30DBS	Blk SS	30" x 19-1/2"
ZSA-M90DB	B	35-7/16" x 19-1/2"
ZSA-M90DW	W	35-7/16" x 19-1/2"
ZSA-M90DS	S	35-7/16" x 19-1/2"
ZSA-M90DBS	Blk SS	35-7/16" x 19-1/2"

- Max. Blower CFM: 685
- ACT Max. Blower CFM: 390, 290
- Auto delay-off
- 5-speed ICON Touch® controls
- 6" round vertical ducting
- Accommodates 9"7" ceiling height
- BriteStrip™ LED Lighting (3000K)
- Dual-level lighting
- Aluminum mesh filters

**Accessories**

ZRC-00SV	Recirculating Kit (w/ charcoal filters)
ZOF-C002	Charcoal Filter Replacement (each)
Z1C-01SAB	Duct Cover Extension, B (For up to a 12' ceiling)
Z1C-01SAW	Duct Cover Extension, W (For up to a 12' ceiling)
Z1C-01SA	Duct Cover Extension, S (For up to a 12' ceiling)
Z1C-01SABS	Duct Cover Extension, Blk SS (For up to a 12' ceiling)
MUA008A	Make-Up Air Kit
ZOF-B001	Baffle Filter Kit (2 filters)

**DID YOU KNOW** Zephyr has a comprehensive hood height calculator online to determine if our chimney range hoods will fit in your kitchen. [zephyronline.com/customer-care/range-hood-height-calculator](http://zephyronline.com/customer-care/range-hood-height-calculator)

Finish: (S)-Stainless Steel (Blk SS)-Black Stainless Steel (B)-Black (W)-White  
Warranty: 3 years non-consumable parts, 1 year labor

WALL

CORE COLLECTION



ANZIO WALL  
ACT™

MODEL	FINISH	SIZE W x D
<b>ANZIO</b> 600 CFM Low-Profile Modern Wall Hood w/ Airflow Control Technology (ACT™)		
ZAN-E24CS	S	24" x 22"
ZAN-E30CS	S	30" x 22"
ZAN-E30CBS	Blk SS	30" x 22"
ZAN-M90CS	S	35-7/16" x 22"
ZAN-M90CBS	Blk SS	35-7/16" x 22"
<ul style="list-style-type: none"> <li>•Max. Blower CFM: 600</li> <li>•ACT Max. Blower CFM: 390, 290</li> <li>•Auto delay-off</li> <li>•5-speed ICON Touch® controls</li> <li>•6" round vertical ducting</li> <li>•Accommodates 9'10" ceiling height</li> <li>•BriteStrip™ LED Lighting (3000K)</li> <li>•Dual-level lighting</li> <li>•Aluminum mesh filters</li> </ul>		
<b>Accessories</b>		
ZRC-01AN	Recirculating Kit (w/ charcoal filters)	
Z0F-C091	Charcoal Filter Replacement (each)	
Z1C-00AN	Duct Cover Extension (For up to a 12' ceiling)	
Z1C-00ANBS	Duct Cover Extension, Blk SS (For up to a 12' ceiling)	
MUA006A	Make-Up Air Kit	
Z0F-B002	Hybrid Baffle Filter Kit (2 filters)	

CORE COLLECTION



RAVENNA WALL  
ACT™

MODEL	FINISH	SIZE W x D
<b>RAVENNA</b> 600 CFM Curved Glass Wall Hood w/ Airflow Control Technology (ACT™)		
ZRV-E30BGC	S w/ Clear Glass	30" x 19-3/4"
ZRV-E30BGG	S w/ Smoke Gray Glass	30" x 19-3/4"
ZRV-E30BBSGG	Blk SS w/ Smoke Gray Glass	30" x 19-3/4"
ZRV-M90BGC	S w/ Clear Glass	35-3/16" x 19-3/4"
ZRV-M90BGG	S w/ Smoke Gray Glass	35-3/16" x 19-3/4"
ZRV-M90BBSGG	Blk SS w/ Smoke Gray Glass	35-3/16" x 19-3/4"
<ul style="list-style-type: none"> <li>•Max. Blower CFM: 600</li> <li>•ACT Max. Blower CFM: 390, 290</li> <li>•Auto delay-off</li> <li>•5-speed ICON Touch® controls</li> <li>•6" round vertical ducting</li> <li>•Accommodates 9'4" ceiling height</li> <li>•BriteStrip™ LED Lighting (3000K)</li> <li>•Dual-level lighting</li> <li>•Aluminum mesh filter</li> </ul>		
<b>Accessories</b>		
ZRC-00RV	Recirculating Kit (w/ charcoal filters)	
Z0F-C002	Charcoal Filter Replacement (each)	
Z1C-00RV	Duct Cover Extension (For up to a 12' ceiling)	
Z1C-00RVBS	Duct Cover Extension, Blk SS (For up to a 12' ceiling)	
MUA006A	Make-Up Air Kit	

CORE COLLECTION



ROMA WALL  
ACT™

MODEL	FINISH	SIZE W x D
<b>ROMA</b> 600 CFM Contemporary Hood w/ Airflow Control Technology (ACT™)		
ZRO-E30DS	S	30" x 22"
ZRO-M90DS	S	35-7/16" x 22"
<ul style="list-style-type: none"> <li>•Max. Blower CFM: 600</li> <li>•ACT Max. Blower CFM: 390, 290</li> <li>•Auto delay-off</li> <li>•5-speed ICON Touch® controls</li> <li>•6" round vertical ducting</li> <li>•Accommodates 9'9" ceiling height</li> <li>•BriteStrip™ LED™ Lighting (3000K)</li> <li>•Dual-level lighting</li> <li>•Aluminum mesh filters</li> </ul>		
<b>Accessories</b>		
ZRC-01RO	Recirculating Kit (2 charcoal filters)	
Z0F-C002	Charcoal Filter Replacement (each)	
Z1C-00RO	Duct Cover Extension (For up to a 12' ceiling)	
MUA006A	Make-Up Air Kit	

Finish: (S)-Stainless Steel (Blk SS)-Black Stainless Steel  
Warranty: 3 years non-consumable parts, 1 year labor

WALL

CORE COLLECTION

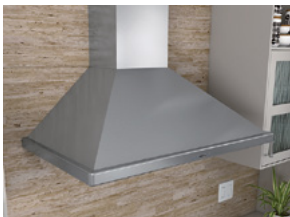


ROMA GROOVE  
Bluetooth ACT™

MODEL	FINISH	SIZE W x D
<b>ROMA GROOVE 600 CFM Contemporary Hood w/ Bluetooth® Speakers &amp; ACT™</b>		
ZRG-E30AS	S	30" x 22"
ZRG-M90AS	S	35-7/16" x 22"
<ul style="list-style-type: none"> <li>•Max. Blower CFM: 600</li> <li>•ACT Max. Blower CFM: 390, 290</li> <li>•Baffle filters</li> <li>•2 built-in Bluetooth® stereo speakers</li> <li>•5-speed ICON Touch® controls</li> <li>•6" round vertical ducting</li> <li>•Accommodates 10' ceiling height</li> <li>•BriteStrip LED™ Lighting (3000K)</li> <li>•Dual-level lighting</li> <li>•Auto delay-off</li> </ul>		
<b>Accessories</b>		
ZRC-00RG	Recirculating Kit (2 charcoal filters)	
Z0F-C005	Charcoal Filter Replacement (each)	
Z1C-00RO	Duct Cover Extension (For up to a 12' ceiling)	
MUA006A	Make-Up Air Kit	

**DID YOU KNOW** The Zephyr Roma Groove is compatible with various Bluetooth® devices such as mobile phones and tablets. Roma Groove allows you to play your music through two built-in stereo speakers, freeing up counter space so you can enjoy your favorite music while entertaining or prepping your evening's dinner.

CORE COLLECTION



SIENA  
ACT™

MODEL	FINISH	SIZE W x D
<b>SIENA 650 CFM Traditional Wall Hood w/ Hybrid Baffle Filters &amp; ACT™</b>		
ZSI-E30BS	S	30" x 22"
ZSI-E36BS	S	36" x 22"
<ul style="list-style-type: none"> <li>•Max. Blower CFM: 650</li> <li>•ACT Max. Blower CFM: 390, 290</li> <li>•Hybrid baffle filters</li> <li>•Accommodates 9"4" ceiling height</li> <li>•5-speed ICON Touch® controls</li> <li>•8" round vertical ducting</li> <li>•8" or 3-1/4"x10" horizontal ducting</li> <li>•BriteStrip™ LED Lighting (3000K)</li> <li>•Dual-level lighting</li> <li>•Auto delay-off</li> </ul>		
<b>Accessories</b>		
ZRC-00SI	Recirculating Kit (w/ charcoal filters)	
Z0F-C091	Charcoal Filter Replacement (each)	
Z1C-00SI	Duct Cover Extension, (For up to a 12' ceiling)	
MUA008A	Make-Up Air Kit	

CORE COLLECTION



SIENA ES  
ACT™

MODEL	FINISH	SIZE W x D
<b>SIENA ES 400 CFM ENERGY STAR Traditional Wall Hood w/ Hybrid Baffle Filters &amp; ACT™</b>		
ZSI-E30AS-ES	S	30" x 22"
ZSI-E36AS-ES	S	36" x 22"
<ul style="list-style-type: none"> <li>•Max. Blower CFM: 400</li> <li>•ACT Max. Blower CFM: 290</li> <li>•ENERGY STAR certified</li> <li>•3-speed ICON Touch® controls</li> <li>•8" round vertical ducting</li> <li>•Accommodates 9"4" ceiling height</li> <li>•13W fluorescent lights</li> <li>•Hybrid baffle filters</li> <li>•Auto delay-off</li> </ul>		
<b>Accessories</b>		
Z1C-00SI	Duct Cover Extension, (For up to a 12' ceiling)	

CORE COLLECTION



SIENA PRO WALL  
ACT™

MODEL	FINISH	SIZE W x D
<b>SIENA PRO 1,200 CFM Pro Wall Hood w/ Hybrid Baffle Filters &amp; ACT™</b>		
ZSP-E36BS	S	36" x 22"
ZSP-E42BS	S	42" x 22"
ZSP-E48BS	S	48" x 22"
<ul style="list-style-type: none"> <li>•Max. Blower CFM: 1,200</li> <li>•ACT Max. Blower CFM: 590, 390</li> <li>•Auto delay-off</li> <li>•5-speed ICON Touch® controls</li> <li>•10" round vertical ducting</li> <li>•Accommodates 9"4" ceiling height</li> <li>•BriteStrip™ LED Lighting (3000K)</li> <li>•Dual-level lighting</li> <li>•Hybrid baffle filters</li> </ul>		
<b>Accessories</b>		
Z1C-00SP	Duct Cover Extension (For up to a 12' ceiling)	
MUA010A	Make-Up Air Kit	

Finish: (S)-Stainless Steel  
Warranty: 3 years non-consumable parts, 1 year labor

WALL

PRO COLLECTION



TITAN WALL  
ACT™

MODEL	FINISH	SIZE W x D
<b>TITAN 750 CFM Pro-Style Chimney Hood w/ Powerwave™ Blower &amp; LED Lights</b>		

AK7636AS	S	36" x 24"
AK7642AS	S	42" x 24"
AK7648AS	S	48" x 24"
AK7654AS	S	54" x 24"
AK7660AS	S	60" x 24"

- Max. Blower CFM: 750 (included)
- Max. Blower CFM: 1,300 (optional)
- ACT Max. Blower CFM: 590, 390, 290
- Auto delay-off
- CleanAir function
- 8" or 10" round vertical & horizontal ducting
- Dual-level lighting
- Accommodates 9'6" ceiling height
- Directional lighting
- 6W Bloom™ GU10 LED lights
- Pro baffle filters
- 6-speed LCD controls
- Wireless remote option

**Accessories**

PBD-1300A	1,300 CFM Internal Blower Kit (10" round duct)
Z1C-0076	Duct Cover Extension - 36", 42" (For a 10'-12' ceiling)
Z1C-0176	Duct Cover Extension - 48", 54", 60" (For a 10'-12' ceiling)
14000005	RF Wireless Remote Control
MUA008A	Make-Up Air Kit (750 CFM)
MUA010A	Make-Up Air Kit (1,300 CFM)

PRO COLLECTION



ROMA PRO  
ACT™

MODEL	FINISH	SIZE W x D
<b>ROMA PRO 750 CFM Pro-Style Chimney Hood w/ Powerwave™ Blower &amp; LED Lights</b>		

ZRP-E36AS	S	36" x 24"
ZRP-E48AS	S	48" x 24"

- Max. Blower CFM: 750 (included)
- Max. Blower CFM: 1,300 (optional)
- ACT Max. Blower CFM: 590, 390, 290
- Auto delay-off
- CleanAir function
- 8" or 10" round vertical ducting
- Dual-level lighting
- Accommodates 10'3" ceiling height
- Directional lighting
- 6W Bloom™ GU10 LED lights
- Pro baffle filters
- 6-speed LCD controls
- Wireless remote option

**Accessories**

PBD-1300A	1,300 CFM Internal Blower Kit (10" round duct)
Z1C-00RP	Duct Cover Extension (For a 10'-12' ceiling)
14000005	RF Wireless Remote Control
MUA008A	Make-Up Air Kit (750 CFM)
MUA010A	Make-Up Air Kit (1,300 CFM)

Finish: (S)-Stainless Steel

Warranty: 3 years non-consumable parts, 1 year labor

WALL

CORE COLLECTION



MODENA WALL  
ACT™

MODEL	FINISH	SIZE W x D
<b>MODENA</b> 600 CFM Thin Floating Glass Wall Hood w/ LED Lighting and ACT™		
ZMO-E30BS	S w/ Glass	30" x 22-1/8"
ZMO-M90BS	S w/ Glass	35-7/16" x 22-1/8"
<ul style="list-style-type: none"> <li>•Max. Blower CFM: 600</li> <li>•ACT Max. Blower CFM: 390, 290</li> <li>•Accommodates 10' ceiling height</li> <li>•5-speed ICON Touch® controls</li> <li>•8" round vertical ducting</li> <li>•Auto delay-off</li> <li>•6W LumiLight LED lights</li> <li>•Dual-level lighting</li> <li>•Aluminum mesh filter</li> </ul>		
<b>Accessories</b>		
ZRC-00MO	Recirculating Kit (w/ charcoal filter)	
Z0F-C002	Charcoal Filter Replacement (each)	
Z1C-00MO	Duct Cover Extension (For up to a 12' ceiling)	
MUA006A	Make-Up Air Kit	

CORE COLLECTION



LUCÉ WALL  
ACT™

MODEL	FINISH	SIZE W x D
<b>LUCÉ</b> 600 CFM Wall Hood w/ LED Accent Lighting & Airflow Control Technology (ACT™)		
ZLU-E30BS	S	30" x 22"
ZLU-M90BS	S	35-7/16" x 22"
<ul style="list-style-type: none"> <li>•Max. Blower CFM: 600</li> <li>•ACT Max. Blower CFM: 390, 290</li> <li>•Auto delay-off</li> <li>•Aluminum mesh filters</li> <li>•5-speed ICON Touch® controls</li> <li>•6" round vertical ducting</li> <li>•Accommodates 10' ceiling height</li> <li>•BriteStrip™ LED Lighting (3000K)</li> <li>•Dual-level lighting</li> <li>•3-color LED accent light</li> </ul>		
<b>Accessories</b>		
ZRC-00LU	Recirculating Kit (w/ charcoal filter)	
Z0F-C092	Charcoal Filter Replacement (each)	
Z1C-00LU	Duct Cover Extension (For up to a 12' ceiling)	
MUA006A	Make-Up Air Kit	

Lucé illuminates in cloud white, deep blue and amber.

CORE COLLECTION



VERONA WALL  
ACT™

MODEL	FINISH	SIZE W x D
<b>VERONA</b> 600 CFM LED Illuminated Glass Wall Hood w/ LED Lighting and ACT™		
ZVO-E30BG	S w/ Glass	30" x 22"
ZVO-M90BG	S w/ Glass	35-7/16" x 22"
<ul style="list-style-type: none"> <li>•Max. Blower CFM: 600</li> <li>•ACT Max. Blower CFM: 390, 290</li> <li>•Accommodates 10' ceiling height</li> <li>•Aluminum mesh filters</li> <li>•5-speed ICON Touch® controls</li> <li>•8" round vertical ducting</li> <li>•Auto delay-off</li> <li>•6W LumiLight LED lights</li> <li>•Dual-level lighting</li> <li>•3 color LED illuminated glass</li> </ul>		
<b>Accessories</b>		
ZRC-00VO	Recirculating Kit (w/ charcoal filters)	
Z0F-C002	Charcoal Filter Replacement (each)	
Z1C-00VO	Duct Cover Extension (For up to a 12' ceiling)	
MUA006A	Make-Up Air Kit	

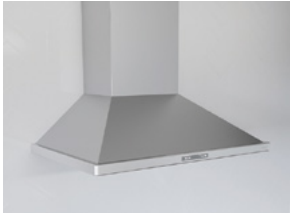
Verona glass illuminates in cloud white, deep blue and amber.

**DID YOU KNOW** Lucé & Verona models have a "demo mode" that cycles through each of the three LED accent light colors every 10 seconds. To enable demo mode, hold down the "accent light" button on the bottom of the hood for 3 seconds.

Finish: (S)-Stainless Steel  
Warranty: 3 years non-consumable parts, 1 year labor

WALL

CORE COLLECTION



VENEZIA



MODEL	FINISH	SIZE W x D
<b>VENEZIA</b> 700 CFM Wall Hood w/ Zephyr Connect + PowerWave™ Blower & Baffle Filters		

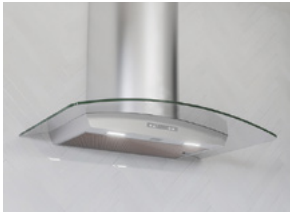
ZVE-E30DS	S	30" x 24"
ZVE-E36DS	S	36" x 24"
ZVE-E42DS	S	42" x 24"

- Max. Blower CFM: 700
- ACT Max. Blower CFM: 590, 390, 290
- Baffle filters
- CleanAir function
- 6-speed proximity controls
- 8" round vertical ducting
- Accommodates 9'6" ceiling height
- Zephyr Connect app compatible
- 6W LumiLight LED lights
- Tri-level lighting
- Auto delay-off

**Accessories**

ZRC-03VE	Recirculating Kit (w/ charcoal filters)
ZOF-C091	Charcoal Filter Replacement (each)
Z1C-01VE	Duct Cover Extension (For up to a 12' ceiling)
14000005	RF Wireless Remote Control
MUA008A	Make-Up Air Kit

CORE COLLECTION



MILANO WALL



<b>MILANO</b> 700 CFM Curved Canopy Wall Hood w/ Zephyr Connect & PowerWave™ Blower		
---	--	--

ZMI-M90CG	S w/ Glass	35-5/16" x 20-1/2"
ZMI-M90CS	S	35-5/16" x 20-1/2"

- Max. Blower CFM: 700
- ACT Max. Blower CFM: 590, 390, 290
- CleanAir function
- Zephyr Connect app compatible
- 6-speed proximity controls
- 8" round vertical ducting
- Accommodates 10' ceiling height
- Aluminum mesh filter
- 6W LumiLight LED lights
- Tri-level lighting
- Auto delay-off

**Accessories**

ZRC-00MI	Recirculating Kit (w/ charcoal filters)
ZOF-C002	Charcoal Filter Replacement (each)
Z1C-01MI	Duct Cover Extension (For up to a 12' ceiling)
14000005	RF Wireless Remote Control
MUA008A	Make-Up Air Kit

**DID YOU KNOW** Zephyr LumiLight LED lights are covered under the same 3 year warranty as all internal parts. Zephyr is the first and only range hood manufacturer to warranty lights.

Finish: (S)-Stainless Steel

Warranty: 3 years non-consumable parts, 1 year labor

WALL

DESIGNER COLLECTION



APEX WALL

DESIGNER COLLECTION



VISTA WALL

MODEL	FINISH	SIZE W x D
<b>APEX</b> Vertical-Style Wall Hood w/ LED Lighting - BODY ONLY*		
DAP-M90AMBX	Matte Blk Glass	35-3/8" x 19-13/16"
DAP-M90AMWX	Matte Wht Glass	35-3/8" x 19-13/16"

•Max. Blower CFM: 290-1,000 (not included)	•6" or 8" round vertical ducting	•5W LED lights
•3-speed capacitive touch controls	•6" or 8" round horizontal ducting	•Tri-level lighting
•CleanAir function	•Wireless remote control option	•Aluminum mesh filters

**Accessories and Blowers**

ZRC-00AP	Recirculating Kit (w/ charcoal filter)
ZOF-C010	Charcoal Filter Replacement (2 per kit)
Z1C-00MEMB	Duct Cover, Matte Blk (For up to 10'6" ceiling)
Z1C-00MESS	Duct Cover, SS (For up to 10'6" ceiling)
CBI-290C	290 CFM Internal Blower (6" round duct)
CBI-600A	600 CFM Internal Blower (6" round duct)
PBN-1000A	1,000 CFM In-line Blower (8" round duct**)
CBE-1000	1,000 CFM External Blower (8" round duct**)
14000010	RF Wireless Remote Control
MUA006A	Make-Up Air Kit (600 CFM)
MUA008A	Make-Up Air Kit (1,000 CFM)

\*Requires purchase of Zephyr internal, external or in-line blower, sold separately.

\*\*10" round duct connects to external or in-line blower. Must transition from 10" to 8" before duct passes through ceiling. 10" to 8" adapter included with in-line and external blowers

MODEL	FINISH	SIZE W x D
<b>VISTA</b> Low-Profile Wall Hood w/ PAS Panel and LED Lighting - BODY ONLY*		
DVS-E30ASSX	S	30" x 18-7/8"
DVS-E36ASSX	S	36" x 18-7/8"

•Max. Blower CFM: 290-1,000 (not included)	•6" or 8" round vertical ducting	•5W LED lights
•3-speed invisible touch controls	•Perimeter aspiration system	•Tri-level lighting
•Wireless remote control option	•Aluminum mesh filters	•CleanAir function
•Accommodates 9' ceiling height	•2-1/8" body height	

**Accessories and Blowers**

ZRC-00VS	Recirculating Kit (w/ charcoal filter)
ZOF-C010	Charcoal Filter Replacement (2 per kit)
Z1C-00VS	Duct Cover Extension, SS (For up to 12' ceiling)
CBI-290C	290 CFM Internal Blower (6" round duct)
CBI-600A	600 CFM Internal Blower (6" round duct)
PBN-1000A	1,000 CFM In-line Blower (8" round duct**)
CBE-1000	1,000 CFM External Blower (8" round duct**)
14000010	RF Wireless Remote Control
MUA006A	Make-Up Air Kit (600 CFM)
MUA008A	Make-Up Air Kit (1,000 CFM)

\*Requires purchase of Zephyr internal, external or in-line blower, sold separately.

\*\*10" round duct connects to external or in-line blower. Must transition from 10" to 8" before duct passes through ceiling. 10" to 8" adapter included with in-line and external blowers

Finish: (Matte Blk)-Matte Black (Matte Wht)-Matte White (S)-Stainless Steel  
Warranty: 2 years non-consumable parts, 1 year labor



WALL

DESIGNER COLLECTION



MESA WALL

DESIGNER COLLECTION



LAYERS WALL

MODEL	FINISH	SIZE W x D
<b>MESA</b> European Pro-Style Hood w/ LED Lighting - BODY ONLY*		

DME-M90AMBX	Matte Blk	35-5/16" x 19-11/16"
DME-M90ASSX	S	35-5/16" x 19-11/16"
DME-M90ASGX	Satin Gold	35-5/16" x 19-11/16"

- |  |                                    |                     |
|--|------------------------------------|---------------------|
| •Max. Blower CFM: 290-1,000 (not included) | •6" or 8" round vertical ducting   | •5W LED lights      |
| •3-speed invisible touch controls          | •6" or 8" round horizontal ducting | •Tri-level lighting |
| •CleanAir function                         | •Wireless remote control option    | •Baffle filters     |

**Accessories and Blowers**

ZRC-01ME	Recirculating Kit (w/ charcoal filter)
ZOF-C010	Charcoal Filter Replacement (2 per kit)
Z1C-00MEMB	Duct Cover, Matte Blk (For up to 10'6" ceiling)
Z1C-00MESS	Duct Cover, SS (For up to 10'6" ceiling)
Z1C-00MESG	Duct Cover, Satin Gold (For up to 10'6" ceiling)
MERAIL-00SS	Accent Rail, Stainless
MERAIL-00SG	Accent Rail, Satin Gold
CBI-290C	290 CFM Internal Blower (6" round duct)
CBI-600A	600 CFM Internal Blower (6" round duct)
PBN-1000A	1,000 CFM In-line Blower (8" round duct**)
CBE-1000	1,000 CFM External Blower (8" round duct**)
14000010	RF Wireless Remote Control
MUA006A	Make-Up Air Kit (600 CFM)
MUA008A	Make-Up Air Kit (1,000 CFM)

\*Requires purchase of Zephyr internal, external or in-line blower, sold separately.

\*\*10" round duct connects to external or in-line blower. Must transition from 10" to 8" before duct passes through ceiling. 10" to 8" adapter included with in-line and external blowers

LAYERS	Designer Wall Hood w/ PAS Panel and LED Lighting - BODY ONLY*	
DLA-M90ASSX	S	36" x 22"
DLA-E42ASSX	S	42" x 22"

DLA-M90ASSX	S	36" x 22"
DLA-E42ASSX	S	42" x 22"

- |  |                                  |                     |
|--|----------------------------------|---------------------|
| •Max. Blower CFM: 290-1,000 (not included) | •6" or 8" round vertical ducting | •5W LED lights      |
| •3-speed invisible touch controls          | •Perimeter aspiration system     | •Tri-level lighting |
| •Wireless remote control option            | •Aluminum mesh filter            | •CleanAir function  |
| •Accommodates 9'5" ceiling height          | •1-3/4" body height              |                     |

**Accessories and Blowers**

ZRC-00VS	Recirculating Kit (w/ charcoal filter)
ZOF-C010	Charcoal Filter Replacement (2 per kit)
Z1C-00VS	Duct Cover Extension, SS (For up to 12' ceiling)
CBI-290C	290 CFM Internal Blower (6" round duct)
CBI-600A	600 CFM Internal Blower (6" round duct)
PBN-1000A	1,000 CFM In-line Blower (8" round duct**)
CBE-1000	1,000 CFM External Blower (8" round duct**)
14000010	RF Wireless Remote Control
MUA006A	Make-Up Air Kit (600 CFM)
MUA008A	Make-Up Air Kit (1,000 CFM)

\*Requires purchase of Zephyr internal, external or in-line blower, sold separately.

\*\*10" round duct connects to external or in-line blower. Must transition from 10" to 8" before duct passes through ceiling. 10" to 8" adapter included with in-line and external blowers

Finish: (Matte Blk)-Matte Black (S)-Stainless Steel  
Warranty: 2 years non-consumable parts, 1 year labor

WALL

DESIGNER COLLECTION



HORIZON WALL

DESIGNER COLLECTION



OKEANITO WALL

MODEL	FINISH	SIZE W x D
<b>HORIZON</b> Designer Wall Hood w/ LED Lighting - BODY ONLY*		
DHZ-M90AMBX	Matte Blk Glass	35-3/8" x 20-1/8"
DHZ-M90AMWX	Matte Wht Glass	35-3/8" x 20-1/8"
<ul style="list-style-type: none"> <li>•Max. Blower CFM: 290-1,000 (not included)</li> <li>•3-speed capacitive touch controls</li> <li>•CleanAir function</li> <li>•Hybrid baffle filters</li> </ul>		
<ul style="list-style-type: none"> <li>•6" or 8" round vertical ducting</li> <li>•6" or 8" round horizontal ducting</li> <li>•Wireless remote control option</li> <li>•Ambient lighting</li> </ul>		
<ul style="list-style-type: none"> <li>•5W LED lights</li> <li>•Tri-level lighting</li> <li>•Dual capture zones</li> </ul>		
<b>Accessories and Blowers</b>		
Z0F-C010	Recirculating Kit (w/ charcoal filters)	
Z1C-01HZ	Duct Cover, SS (For up to 9' - 10' ceiling)	
CBI-290C	290 CFM Internal Blower (6" round duct)	
CBI-600A	600 CFM Internal Blower (6" round duct)	
PBN-1000A	1,000 CFM In-line Blower (8" round duct**)	
CBE-1000	1,000 CFM External Blower (8" round duct**)	
14000010	RF Wireless Remote Control	
MUA006A	Make-Up Air Kit (600 CFM)	
MUA008A	Make-Up Air Kit (1,000 CFM)	

\*Requires purchase of Zephyr internal, external or in-line blower, sold separately.

\*\*10" round duct connects to external or in-line blower. Must transition from 10" to 8" before duct passes through ceiling. 10" to 8" adapter included with in-line and external blowers.

MODEL	FINISH	SIZE W x D
<b>OKEANITO</b> Designer Wall Hood w/ LED Lighting - BODY ONLY*		
COK-E36BSX	S	36" x 22-3/4"
COK-E42BSX	S	42" x 22-3/4"
COK-E48BSX	S	48" x 22-3/4"
<ul style="list-style-type: none"> <li>•Max. Blower CFM: 290-1,000 (not included)</li> <li>•3-speed electronic controls</li> <li>•Wireless remote option</li> <li>•Accommodates 10'1" ceiling height</li> </ul>		
<ul style="list-style-type: none"> <li>•6" or 8" round vertical ducting</li> <li>•Auto delay-off</li> <li>•Pro baffle filters</li> <li>•CleanAir function</li> </ul>		
<ul style="list-style-type: none"> <li>•Bloom™ HD LED lights</li> <li>•Dual-level lighting</li> <li>•40W ambient lights</li> </ul>		
<b>Accessories and Blowers</b>		
Z1C-00OK	Duct Cover Extension (For up to a 12' ceiling)	
CBI-290C	290 CFM Internal Blower (6" round duct)	
CBI-600A	600 CFM Internal Blower (6" round duct)	
PBN-1000A	1,000 CFM In-Line Blower (10" to 8" round duct**)	
CBE-1000	1,000 CFM External Blower (10" or 8" round duct**)	
14000005	RF Wireless Remote Control	
MUA006A	Make-Up Air Kit (600 CFM)	
MUA008A	Make-Up Air Kit (1,000 CFM)	

\*Requires purchase of Zephyr blower, sold separately.

\*\*10" round duct connects to external/in-line blower. Must transition from 10" to 8" before duct passes through ceiling. 10" to 8" adapter included with external/in-line blower.

Finish: (Matte Blk)-Matte Black (Matte Wht)-Matte White (S)-Stainless Steel

Warranty: 2 years non-consumable parts, 1 year labor (DHZ) 3 years non-consumable parts, 1 year labor (COK)

ISLAND

CORE COLLECTION



ROMA ISLAND  
ACT™

MODEL	FINISH	SIZE W x D
<b>ROMA IS.</b> 600 CFM Contemporary Island Hood w/ Airflow Control Technology (ACT™)		
ZRM-E36DS	S	36" x 27"
ZRM-E42DS	S	42" x 27"
<ul style="list-style-type: none"> <li>•Max. Blower CFM: 600</li> <li>•ACT Max. Blower CFM: 390, 290</li> <li>•Accommodates 9'1" ceiling height</li> <li>•Quick-lock installation with magnetic duct covers</li> <li>•5-speed ICON Touch® controls</li> <li>•6" round vertical ducting</li> <li>•Auto delay-off</li> <li>•BriteStrip™ LED Lighting (3000K)</li> <li>•Dual-level lighting</li> <li>•Aluminum mesh filters</li> </ul>		
<b>Accessories</b>		
ZRC-02RM	Recirculating Kit (w/ charcoal filters)	
ZOF-C002	Charcoal Filter Replacement (each)	
Z1C-01RM	Duct Cover Extension (For up to a 12' ceiling)	
MUA006A	Make-Up Air Kit	

CORE COLLECTION



ANZIO ISLAND  
ACT™

MODEL	FINISH	SIZE W x D
<b>ANZIO IS.</b> 600 CFM Low-Profile Modern Island Hood w/ Airflow Control Technology (ACT™)		
ZAZ-M90CS	S	35-7/16" x 25-9/16"
ZAZ-E42CS	S	42" x 25-9/16"
<ul style="list-style-type: none"> <li>•Max. Blower CFM: 600</li> <li>•ACT Max. Blower CFM: 390, 290</li> <li>•Accommodates 10' ceiling height</li> <li>•Quick-lock installation with magnetic duct covers</li> <li>•5-speed ICON Touch® controls</li> <li>•6" round vertical ducting</li> <li>•Auto delay-off</li> <li>•BriteStrip™ LED Lighting (3000K)</li> <li>•Dual-level lighting</li> <li>•Aluminum mesh filters</li> </ul>		
<b>Accessories</b>		
ZRC-02AZ	Recirculating Kit	
ZOF-C091	Charcoal Filter Replacement (each)	
Z1C-00AZ	Duct Cover Extension (For up to a 12' ceiling)	
MUA006A	Make-Up Air Kit	
ZOF-B002	Hybrid Baffle Filter Kit (2 filters)	

CORE COLLECTION



RAVENNA ISLAND  
ACT™

MODEL	FINISH	SIZE W x D
<b>RAVENNA IS.</b> 600 CFM Black Stainless Steel Island Hood w/ Smoke Gray Glass Canopy		
ZRE-M90ABSGG	Blk SS	35-3/16" x 25-9/16"
ZRE-E42ABSGG	Blk SS	42" x 25-9/16"
<ul style="list-style-type: none"> <li>•Max. Blower CFM: 600</li> <li>•ACT Max. Blower CFM: 390, 290</li> <li>•Accommodates 9' ceiling height</li> <li>•Quick-lock installation with magnetic duct covers</li> <li>•5-speed ICON Touch® controls</li> <li>•6" round vertical ducting</li> <li>•Auto delay-off</li> <li>•BriteStrip™ LED Lighting (3000K)</li> <li>•Dual-level lighting</li> <li>•Aluminum mesh filters</li> </ul>		
<b>Accessories</b>		
ZRC-00RE	Recirculating Kit (w/ charcoal filters)	
ZOF-C002	Charcoal Filter Replacement (each)	
Z1C-00REBS	Duct Cover Extension (For up to a 12' ceiling)	
MUA006A	Make-Up Air Kit	

**DID YOU KNOW** Zephyr island hoods with Quick-lock installation are the easiest island hoods to install in the market.

Finish: (S)-Stainless Steel (Blk SS)-Black Stainless Steel w/ Smoke Gray Glass  
Warranty: 3 years non-consumable parts, 1 year labor

ISLAND

CORE COLLECTION



MODENA ISLAND  
ACT™

MODEL	FINISH	SIZE W x D
<b>MODENA IS. 600 CFM Thin Profile Island Hood w/ LED Lighting and ACT™</b>		
ZMD-M90BS	S	35-7/16" x 27-1/2"
ZMD-E42BS	S	42" x 27-1/2"

- Max. Blower CFM: 600
- ACT Max. Blower CFM: 390, 290
- Accommodates 10' ceiling height
- Quick-lock installation with magnetic duct covers
- 5-speed ICON Touch® controls
- 8" round vertical ducting
- Auto delay-off
- 6W LumiLight LED lights
- Dual-level lighting
- Aluminum mesh filter

**Accessories**

ZRC-00MD	Recirculating Kit (w/ charcoal filter)
ZOF-C002	Charcoal Filter Replacement (each)
Z1C-00MD	Duct Cover Extension (For up to a 12' ceiling)
MUA006A	Make-Up Air Kit

CORE COLLECTION



LUCÉ ISLAND  
ACT™

MODEL	FINISH	SIZE W x D
<b>LUCÉ IS. 600 CFM Island Hood w/ LED Accent Lighting &amp; Airflow Control Technology (ACT™)</b>		
ZLC-M90BS	S	35-7/16" x 25-9/16"
ZLC-E42BS	S	42" x 25-9/16"

- Max. Blower CFM: 600
- ACT Max. Blower CFM: 390, 290
- Accommodates 9'8" ceiling height
- Quick-lock installation with magnetic duct covers
- 5-speed ICON Touch® controls
- 6" round vertical ducting
- Auto delay-off
- BriteStrip™ LED Lighting (3000K)
- Dual-level lighting
- Aluminum mesh filters

**Accessories**

ZRC-00LC	Recirculating Kit (w/ charcoal filters)
ZOF-C092	Charcoal Filter Replacement (each)
Z1C-00LC	Duct Cover Extension (For up to a 12' ceiling)
MUA006A	Make-Up Air Kit

Lucé island illuminates in cloud white, deep blue and amber.

CORE COLLECTION



VERONA ISLAND  
ACT™

MODEL	FINISH	SIZE W x D
<b>VERONA IS. 600 CFM LED Illuminated Glass Island Hood w/ LED Lighting and ACT™</b>		
ZVN-M90BG	S w/ Glass	35-7/16" x 27-7/16"
ZVN-E42BG	S w/ Glass	42" x 27-7/16"

- Max. Blower CFM: 600
- ACT Max. Blower CFM: 390, 290
- Accommodates 10' ceiling height
- Aluminum mesh filter
- 5-speed ICON Touch® controls
- 8" round vertical ducting
- Auto delay-off
- Quick-lock installation with magnetic duct covers
- 6W LumiLight LED lights
- Dual-level lighting
- 3 color LED illuminated glass

**Accessories**

ZRC-00VN	Recirculating Kit (w/ charcoal filters)
ZOF-C002	Charcoal Filter Replacement (each)
Z1C-00VN	Duct Cover Extension (For up to a 12' ceiling)
MUA006A	Make-Up Air Kit

Verona Island glass illuminates in cloud white, deep blue and amber.

**DID YOU KNOW** Lucé & Verona models have a "demo mode" that cycles through each of the three LED accent light colors every 10 seconds. To enable demo mode, hold down the "accent light" button on the bottom of the hood for 3 seconds.

Finish: (S)-Stainless Steel

Warranty: 3 years non-consumable parts, 1 year labor

ISLAND

CORE COLLECTION



MILANO ISLAND



CORE COLLECTION



NAPOLI



DESIGNER COLLECTION



VISTA ISLAND

**MODEL FINISH SIZE W x D**

**MILANO IS. 700 CFM Curved Canopy Island Hood w/ Zephyr Connect & PowerWave™ Blower**

ZML-M90CG	S w/ Glass	35-3/16" x 25-9/16"
ZML-M90CS	S	35-3/16" x 25-9/16"
ZML-E42CG	S w/ Glass	42" x 25-9/16"
ZML-E42CS	S	42" x 25-9/16"

- Max. Blower CFM: 700
- ACT Max. Blower CFM: 590, 390, 290
- CleanAir function
- Zephyr Connect app compatible
- 6-speed proximity controls
- 8" round vertical ducting
- Accommodates 10' ceiling height
- Aluminum mesh filters
- 6W LumiLight LED lights
- Tri-level lighting
- Auto delay-off
- Quick-lock installation with magnetic duct covers

**Accessories**

ZRC-00ML	Recirculating Kit (w/ charcoal filters)
Z0F-C002	Charcoal Filter Replacement (each)
Z1C-03ML	Duct Cover Extension (For up to a 12' ceiling)
14000005	RF Wireless Remote Control
MUA008A	Make-Up Air Kit

**NAPOLI IS. 700 CFM Island Hood w/ Zephyr Connect, PowerWave™ Blower & Baffle Filters**

ZNA-M90DS	S	35-7/16" x 25-9/16"
ZNA-E42DS	S	42" x 25-9/16"

- Max. Blower CFM: 700
- ACT Max. Blower CFM: 590, 390, 290
- Baffle filters
- Zephyr Connect app compatible
- Quick-lock installation with magnetic duct covers
- 6-speed proximity controls
- 8" round vertical ducting
- Accommodates 10' ceiling height
- CleanAir function
- 6W LumiLight LED lights
- Tri-level lighting
- Auto delay-off

**Accessories**

ZRC-03NA	Recirculating Kit (w/ charcoal filters)
Z0F-C091	Charcoal Filter Replacement (each)
Z1C-02NA	Duct Cover Extension (For up to a 12' ceiling)
14000005	RF Wireless Remote Control
MUA008A	Make-Up Air Kit

**VISTA IS. Low-Profile Island Hood w/ PAS Panel and LED Lighting- BODY ONLY\***

DVL-E36ASSX	S	36" x 23-5/8"
DVL-E42ASSX	S	42" x 23-5/8"

- Max. Blower CFM: 290-1,000 (not included)
- 3-speed invisible touch controls
- Wireless remote control option
- Accommodates 10' ceiling height
- 6" or 8" round vertical ducting
- Perimeter aspiration system
- Aluminum mesh filters
- 2-1/8" body height
- 5W LED lights
- Tri-level lighting
- CleanAir function

**Accessories and Blowers**

ZRC-00VL	Recirculating Kit (w/ charcoal filter)
Z0F-C010	Charcoal Filter Replacement (2 per kit)
Z1C-00VL	Duct Cover Extension, SS (For up to 12' ceiling)
CBI-290C	290 CFM Internal Blower (6" round duct)
CBI-600A	600 CFM Internal Blower (6" round duct)
PBN-1000A	1,000 CFM In-line Blower (8" round duct**)
CBE-1000	1,000 CFM External Blower (8" round duct**)
14000010	RF Wireless Remote Control
MUA006A	Make-Up Air Kit (600 CFM)
MUA008A	Make-Up Air Kit (1,000 CFM)

\*Requires purchase of Zephyr internal, external or in-line blower, sold separately.  
 \*\*10" round duct connects to external or in-line blower. Must transition from 10" to 8" before duct passes through ceiling. 10" to 8" adapter included with in-line and external blowers

Finish: (S)-Stainless Steel

Warranty: 3 years non-consumable parts, 1 year labor (ZML, ZNA) 2 years non-consumable parts, 1 year labor (DVL)

ISLAND

CORE COLLECTION



SIENA PRO ISLAND  
ACT™

MODEL	FINISH	SIZE W x D
<b>SIENA PRO IS.</b> 1,200 CFM Traditional Pro Island Hood w/ Hybrid Baffle Filters & ACT™		
ZSL-E42BS	S	42" x 28"
ZSL-E48BS	S	48" x 28"
<ul style="list-style-type: none"> <li>•Max. Blower CFM: 1,200</li> <li>•ACT Max. Blower CFM: 590, 390</li> <li>•Auto delay-off</li> <li>•Quick-lock installation with magnetic duct covers</li> <li>•5-speed ICON Touch® controls</li> <li>•10" round vertical ducting</li> <li>•Accommodates 9'10" ceiling height</li> <li>•BriteStrip™ LED Lighting (3000K)</li> <li>•Dual-level lighting</li> <li>•Hybrid baffle filters</li> </ul>		

Accessories	
Z1C-01SL	Duct Cover Extension (For up to a 12' ceiling)
MUA010A	Make-Up Air Kit

PRO COLLECTION



TITAN ISLAND  
ACT™

MODEL	FINISH	SIZE W x D
<b>TITAN IS.</b> 750 CFM Pro-Style Chimney Island Hood w/ Powerwave™ Blower & LED Lights		
AK7736AS	S	36" x 31-5/8"
AK7742AS	S	42" x 31-5/8"
AK7748AS	S	48" x 31-5/8"
<ul style="list-style-type: none"> <li>•Max. Blower CFM: 750 (included)</li> <li>•Max. Blower CFM: 1,300 (optional)</li> <li>•ACT Max. Blower CFM: 590, 390, 290</li> <li>•Auto delay-off</li> <li>•CleanAir function</li> <li>•8" or 10" round vertical &amp; horizontal ducting</li> <li>•Dual-level lighting</li> <li>•Accommodates 10'2" ceiling height</li> <li>•Directional lighting</li> <li>•6W Bloom™ GU10 LED lights</li> <li>•Pro baffle filters</li> <li>•6-speed LCD controls</li> <li>•Wireless remote option</li> </ul>		

Accessories	
PBD-1300A	1,300 CFM Internal Blower Kit (10" round duct)
Z1C-0077	Duct Cover Extension - 36", 42" (For a 10'-12' ceiling)
Z1C-0177	Duct Cover Extension - 48" (For a 10'-12' ceiling)
14000005	RF Wireless Remote Control
MUA008A	Make-Up Air Kit (750 CFM)
MUA010A	Make-Up Air Kit (1,300 CFM)

DESIGNER COLLECTION



TRAPEZE

MODEL	FINISH	SIZE W x D
<b>TRAPEZE</b> Designer Island Hood - BODY ONLY*		
CTP-E48BSX	S	48" x 26-5/8"
CTP-E54BSX	S	54" x 26-5/8"
CTP-E60BSX	S	60" x 26-5/8"
<ul style="list-style-type: none"> <li>•Max. Blower CFM: 290-1,000 (not included)</li> <li>•3-speed electronic controls</li> <li>•Accommodates 10'4" ceiling height</li> <li>•CleanAir function</li> <li>•6" or 8" round vertical ducting</li> <li>•Auto delay-off</li> <li>•Pro baffle filters</li> <li>•Bloom™ HD LED lights</li> <li>•Dual-level lighting</li> <li>•Wireless remote option</li> </ul>		

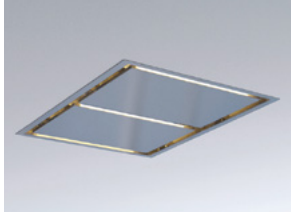
Accessories and Blowers	
Z1C-00TP	Duct Cover Extension (For up to a 12' ceiling)
CBI-290C	290 CFM Internal Blower (6" round duct)
CBI-600A	600 CFM Internal Blower (6" round duct)
PBN-1000A	1,000 CFM In-Line Blower (10" to 8" round duct**)
CBE-1000	1,000 CFM External Blower (10" or 8" round duct**)
14000005	RF Wireless Remote Control
MUA006A	Make-Up Air Kit (600 CFM)
MUA008A	Make-Up Air Kit (1,000 CFM)

\*Requires purchase of Zephyr blower, sold separately.  
 \*\*10" round duct connects to external/in-line blower. Must transition from 10" to 8" before duct passes through ceiling. 10" to 8" adapter included with external/in-line blowers.

Finish: (S)-Stainless Steel  
 Warranty: 3 years non-consumable parts, 1 year labor

IN-CEILING

DESIGNER COLLECTION



LUX

TOP: 43" model shown in stainless steel  
BOTTOM: 63" model shown in white

**MODEL FINISH SIZE W x D**

**LUX Designer In-Ceiling Hood w/ PAS Panels and LED Lighting - BODY ONLY**

MODEL	FINISH	SIZE W x D
ALU-E43BSX	S	43-3/8" x 27-1/2"
ALU-E43BWX	W	43-3/8" x 27-1/2"
ALU-E63BSX	S	63-3/8" x 27-1/2"
ALU-E63BWX	W	63-3/8" x 27-1/2"

- Max. Blower CFM: 290-1,100 (not included)
- 3-speed capacitive touch controls
- CleanAir function
- Aluminum mesh filters
- Perimeter aspiration system
- 6" or 10" round ducting
- Vertical and horizontal ducting
- 10W LED light strips
- Tri-level lighting
- Wireless remote control

**Accessories and Blowers**

ZRC-01LX*	Recirculating Kit (w/ charcoal filters)
ZOF-C002	Charcoal Filter Replacement (each)
CBI-290C	290 CFM Internal Blower (6" round duct)
CBI-600A	600 CFM Internal Blower (6" round duct)
PBI-1100B	1,100 CFM Internal Blower (10" round duct)
PBN-1000A	1,000 CFM In-line Blower (10" round duct)
CBE-1000	1,000 CFM External Blower (10" round duct)
MUA006A	Make-Up Air Kit (600 CFM)
MUA008A	Make-Up Air Kit (1,000 CFM)
MUA010A	Make-Up Air Kit (1,100 CFM)

\*ZRC-01LX recirculating kit is compatible with CBI-290C and CBI-600A internal blowers only.

**DID YOU KNOW** The Perimeter Aspiration System moves airflow away from the central area of the hood and evenly distributes it through narrow openings around the perimeter of the hood. This ventilation method increases air velocity and improves the capture of cooking contaminants. Available in select models: ZPY, DLA, DVS, DVL, ALU, and AK85

Finish: (S)-Stainless Steel (W)-Powder Coated White  
Warranty: 1 year non-consumable parts, 1 year labor

DOWNDRAFT

DESIGNER COLLECTION



LIFT DOWNDRAFT

MODEL	FINISH	WIDTH
<b>LIFT</b> 18" Chimney Rise Downdraft Hood w/ LED Lighting		
DLI-E30ASX	S	30"
DLI-E36ASX	S	36"

- Max. Blower CFM: 600-1,000 (not included)
- Tri-capture zones
- 3-speed capacitive touch controls
- 4-way ducting\*
- 18" chimney rise
- Aluminum mesh filters
- BriteStrip™ LED lighting (3000K)
- Dual-level lighting
- Recirculating option

<b>Accessories</b>	
ZRC-00LF	Recirculating Kit (w/ charcoal filters)
ZOF-C006	Charcoal Filter Replacement (each)
DDA-0002	Wired Remote Up/Down Control
DBI-600A	600 CFM Internal Blower
PBN-1000A	1,000 CFM In-line Blower
CBE-1000	1,000 CFM External Blower
DDS-0030	Gas Cooktop Seal Kit (For DLI-E30ASX)
DDS-0036	Gas Cooktop Seal Kit (For DLI-E36ASX)
DDT-0030	Range Trim Kit (For DLI-E30ASX)
DDT-0036	Range Trim Kit (For DLI-E36ASX)
11030132	5' Extension Cable
DDE-0001	End Cap Trim Extension
54190053	Front Panel Rough-In Plate, 8"
54190054	Front Panel Rough-In Plate, 10"
AK00070	Rectangular to 8" Round Transition
AK00071	Rectangular to 10" Round Transition
AK00072	1-7/8" x 19" Adapter for AK00080 Duct
AK00080	2' Rectangular Duct Extension
MUA006A	Make-Up Air Kit (600 CFM)
MUA008A	Make-Up Air Kit (1,000 CFM)

\*4-Way Ducting includes the front, side (L & R), rear and bottom of blower housing.

**DID YOU KNOW** Lift is compatible with multiple cooking appliance configurations.



COOKTOP



OVEN + COOKTOP



RANGE TOP



RANGE

**Check out the Lift Downdraft Configurator on our website to help determine what components are needed for installation.**

CORE COLLECTION



SORRENTO DOWNDRAFT

MODEL	FINISH	WIDTH
<b>SORRENTO</b> 500 CFM Downdraft Hood w/ 9-1/2" Rise		
DD1-E30AS	S	30"
DD1-E36AS	S	36"

- Max. Blower CFM: 500
- Variable speed controls
- HVI certified
- Decorative mesh filters
- 3-1/4"x10" three position ducting\*

<b>Accessories</b>	
DDA-0001	Wired Remote Up/Down Control
MUA006A	Make-Up Air Kit

\*Three position ducting includes the left, right, or bottom of blower housing.

Finish: (S)-Stainless Steel

Warranty: 2 years non-consumable parts, 1 year labor



INSERT



TORNADO MINI



TWISTER



TWISTER ES



TORNADO I

MODEL	FINISH	SIZE W x D
<b>TORNADO MINI 400 CFM Insert w/ Recirculating Option and LED Lighting</b>		
AK8400BS	S	20-9/16" x 11"

<b>TORNADO MINI 290 CFM Insert w/ Recirculating Option and LED Lighting</b>		
---	--	--

AK8400BS290	S	20-9/16" x 11"
-------------	---	----------------

- Max. Blower CFM: 400 or 290
- 3-speed slide controls
- Stainless steel liner option
- 6" round vertical ducting
- Insert height 9-11/16"
- Aluminum mesh filter
- 6W LumiLight LED lights
- Dual-level lighting

**Accessories**

ZRC-8400A	Recirculating Kit (w/ charcoal filters)
ZOF-C084	Charcoal Filter Replacement (each)
AK0840AS	17-1/2" - 20-1/2" Depth SS Liner (For 30" hood)
AK0846AS	17-1/2" - 20-1/2" Depth SS Liner (For 36" hood)

<b>TWISTER 400 CFM Insert w/ Recirculating Option and LED Lighting</b>		
--	--	--

AK8000CS	S	27-9/16" x 11-3/16"
----------	---	---------------------

- Max. Blower CFM: 400
- 3-speed slide controls
- Aluminum mesh filters
- 6" round vertical & horizontal ducting
- Insert height 11-1/4"
- Stainless steel liner option
- 6W LumiLight LED lights
- Dual-level lighting

**Accessories**

ZRC-0080	Recirculating Kit (w/ charcoal filters)
ZOF-C008	Charcoal Filter Replacement (each)
AK0800AS	17-1/2" - 20-1/2" Depth SS Liner (For 30" hood)
AK0836AS	17-1/2" - 20-1/2" Depth SS Liner (For 36" hood)

<b>TWISTER ES 290 CFM ENERGY STAR Insert</b>		
--	--	--

AK8000AS-ES	S	27-9/16" x 11-3/16"
-------------	---	---------------------

- Max. Blower CFM: 290
- 3-speed slide controls
- Stainless steel liner option
- 6" round vertical ducting
- Insert height 10-1/2"
- 13W fluorescent lights
- ENERGY STAR certified

**Accessories**

AK0800AS	17-1/2" - 20-1/2" Depth SS Liner (For 30" hood)
AK0836AS	17-1/2" - 20-1/2" Depth SS Liner (For 36" hood)

<b>TORNADO I 600 CFM Insert w/ Hybrid Baffle Filters and LED Lighting</b>		
---	--	--

AK8100BS	S	27-9/16" x 11-3/16"
----------	---	---------------------

- Max. Blower CFM: 600
- 3-speed slide controls
- Hybrid baffle filters
- 6" round vertical & horizontal ducting
- Insert height 11-1/4"
- Stainless steel liner option
- 6W LumiLight LED lights
- Dual-level lighting

**Accessories**

ZRC-0080	Recirculating Kit (w/ charcoal filters)
ZOF-C008	Charcoal Filter Replacement (each)
AK0800AS	17-1/2" - 20-1/2" Depth SS Liner (For 30" hood)
AK0836AS	17-1/2" - 20-1/2" Depth SS Liner (For 36" hood)
MUA006A	Make-Up Air Kit

**DID YOU KNOW** Tornado and Twister liners are adjustable and can accommodate multiple cabinet depths.

Finish: (S)-Stainless Steel

Warranty: 3 years non-consumable parts, 1 year labor (AK84) 10 years non-consumable parts, 1 year labor (AK80, AK80-ES, AK81)

INSERT



TORNADO GLO  
ACT

MODEL	FINISH	SIZE W x D
<b>TORNADO GLO 600 CFM Insert w/ Glo LED PAS Panel and ACT™</b>		
<b>AK8500AS</b>	<b>S</b>	<b>27-3/16" x 11-3/16"</b>
<ul style="list-style-type: none"> <li>•Max. Blower CFM: 600</li> <li>•ACT Max. Blower CFM: 390, 290</li> <li>•Insert height 11-5/16"</li> <li>•Stainless steel liner option</li> </ul>	<ul style="list-style-type: none"> <li>•6" vertical &amp; horizontal ducting</li> <li>•6-speed electronic controls</li> <li>•Aluminum mesh filter</li> </ul>	<ul style="list-style-type: none"> <li>•7W Glo LED PAS Panel</li> <li>•Dual-level lighting</li> <li>•Perimeter aspiration system</li> </ul>
<b>Accessories</b>		
ZRC-0085	Recirculating Kit (w/ charcoal filters)	
ZOF-C085	Charcoal Filter Replacement (each)	
14000005	RF Wireless Remote Control	
AK0800AS	17-1/2" - 20-1/2" Depth SS Liner (For 30" hood)	
AK0836AS	17-1/2" - 20-1/2" Depth SS Liner (For 36" hood)	
MUA006A	Make-Up Air Kit	



TORNADO II

MODEL	FINISH	SIZE W x D
<b>TORNADO II 1,000 CFM Insert w/ Wireless Remote Control and LED Lighting</b>		
<b>AK8200BS</b>	<b>S</b>	<b>29-13/16" x 15-13/16"</b>
<ul style="list-style-type: none"> <li>•Max. Blower CFM: 1,000</li> <li>•3-speed electronic touch controls</li> <li>•CleanAir function</li> <li>•Auto delay-off</li> </ul>	<ul style="list-style-type: none"> <li>•10" round vertical ducting</li> <li>•Insert height 11-1/2"*</li> <li>•Wireless remote control</li> </ul>	<ul style="list-style-type: none"> <li>•6W LumiLight LED lights</li> <li>•Tri-level lighting</li> <li>•Pro baffle filters</li> </ul>
*Height dimension does not include 5" tall, 8" round duct adapter.		
<b>Accessories</b>		
AK0806BS	17-5/8" - 20-1/8" Depth SS Liner (For 36" hood)	
AK0806AS	20-1/2" - 23-1/2" Depth SS Liner (For 36" hood)	
AK0842AS	20-1/2" - 23-1/2" Depth SS Liner (For 42" hood)	
MUA008A	Make-Up Air Kit	



TORNADO III

MODEL	FINISH	SIZE W x D
<b>TORNADO III Insert w/ Wireless Remote Control, LED Lighting and Multiple Blowers - BODY ONLY*</b>		
<b>AK8300BSX</b>	<b>S</b>	<b>38-7/16" x 15-13/16"</b>
<ul style="list-style-type: none"> <li>•Max. Blower CFM: 290-1,100 (not included)</li> <li>•3-speed electronic touch controls</li> <li>•CleanAir function</li> <li>•Auto delay-off</li> </ul>	<ul style="list-style-type: none"> <li>•6" or 10" round vertical ducting</li> <li>•Insert height 11-1/2"**</li> <li>•Wireless remote control</li> </ul>	<ul style="list-style-type: none"> <li>•6W LumiLight LED lights</li> <li>•Tri-level lighting</li> <li>•Pro baffle filters</li> </ul>
*Requires purchase of Zephyr blower, sold separately. **Height dimension does not include 5" tall, 8" round duct adapter used with blowers 1,000 CFM or greater.		
<b>Accessories and Blowers</b>		
AK0848BS	17-5/8" - 20-1/8" Depth SS Liner (For 48" hood)	
AK0848AS	20-1/2" - 23-1/2" Depth SS Liner (For 48" hood)	
AK0854AS	20-1/2" - 23-1/2" Depth SS Liner (For 54" hood)	
AK0860AS	20-1/2" - 23-1/2" Depth SS Liner (For 60" hood)	
CBI-290C	290 CFM Internal Blower (6" round duct)	
CBI-600A	600 CFM Internal Blower (6" round duct)	
PBI-1100B	1,100 CFM Internal Blower (10" round duct)	
PBN-1000A	1,000 CFM In-Line Blower (10" round duct)	
CBE-1000	1,000 CFM External Blower (10" round duct)	
MUA006A	Make-Up Air Kit (600 CFM)	
MUA008A	Make-Up Air Kit (1,000 CFM)	

Finish: (S)-Stainless Steel

Warranty: 3 years non-consumable parts, 1 year labor (AK85) 10 years non-consumable parts, 1 year labor (AK82, AK83)

INSERT



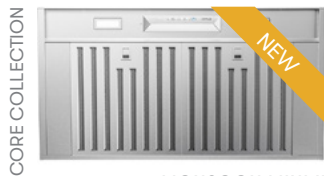
VORTEX

MODEL	FINISH	SIZE W x D
<b>VORTEX</b> 390 CFM Insert w/ Recirculating Option, Adjustable Depth and LED Lighting		
AK9028BS	S	28-3/8" x 17-1/2" to 20-1/2"
AK9034BS	S	34-3/8" x 17-1/2" to 20-1/2"
•Max. Blower CFM: 390	•3-speed slide controls	•Hybrid baffle filter
		•6" round vertical & horizontal ducting
		•Insert height 12-5/16"
		•6W LumiLight LED lights
		•Dual-level lighting
<b>Accessories</b>		
ZRC-9000	Recirculating Kit (w/ charcoal filters)	
ZOF-C090	Charcoal Filter Replacement (each)	



MONSOON MINI

<b>MONSOON MINI</b> 300 CFM Insert w/ Hybrid Baffle Filters and LED Lighting		
AK9128BS	S	28-3/8" x 18-1/16"
AK9134BS	S	34-3/8" x 18-1/16"
•Max. Blower CFM: 300	•Insert height 6-1/8"	•3-speed slide controls
		•7" or 3-1/4"x10" vertical ducting
		•3-1/4"x10" horizontal ducting
		•Hybrid baffle filters
		•6W LumiLight LED lights
		•Dual-level lighting
<b>Accessories</b>		
ZRC-9100A	Recirculating Kit (w/ charcoal filters)	
ZOF-C091	Charcoal Filter Replacement (each)	



MONSOON MINI II  
ACT™

<b>MONSOON MINI II</b> 600 CFM Insert w/ Hybrid Baffle Filters, LED Lighting and ACT™		
AK9528AS	S	28-3/8" x 18-1/16"
AK9534AS	S	34-3/8" x 18-1/16"
AK9540AS	S	40-3/8" x 18-1/16"
AK9546AS	S	46-3/8" x 18-1/16"
•Max. Blower CFM: 600	•ACT Max. Blower CFM: 390, 290	•Insert height 6-1/8"
		•7" or 3-1/4"x10" vertical ducting
		•3-1/4"x10" horizontal ducting
		•Hybrid baffle filters
		•6W LumiLight LED lights
		•Dual-level lighting
		•3-speed electronic controls
<b>Accessories</b>		
ZRC-9100A	Recirculating Kit (w/ charcoal filters)	
ZOF-C091	Charcoal Filter Replacement (each)	
MUA006A	Make-Up Air Kit	

Finish: (S)-Stainless Steel

Warranty: 3 years non-consumable parts, 1 year labor

INSERT



CORE COLLECTION

MONSOON I  
ACT

MODEL	FINISH	SIZE W x D
<b>MONSOON I 600 CFM Insert w/ LED Lighting and ACT™</b>		
AK9228BS	S	28-3/8" x 19-1/4"
AK9234BS	S	34-3/8" x 19-1/4"

- |  |  |   |
|--|--|---|
| <ul style="list-style-type: none"> <li>•Max. Blower CFM: 600</li> <li>•ACT Max. Blower CFM: 390, 290</li> <li>•Insert height 12"</li> <li>•Pro baffle filters</li> </ul> | <ul style="list-style-type: none"> <li>•8" round vertical ducting</li> <li>•8" round horizontal ducting</li> <li>•Wireless remote control</li> <li>•CleanAir function</li> </ul> | <ul style="list-style-type: none"> <li>•6W LumiLight LED lights</li> <li>•Dual-level lighting</li> <li>•6-speed electronic controls</li> <li>•Auto delay-off</li> </ul> |
|--|--|---|

<b>MONSOON I 1,200 CFM Insert w/ LED Lighting ACT™</b>		
AK9240BS	S	40-3/8" x 19-1/4"
AK9246BS	S	46-3/8" x 19-1/4"

- |  |   |  |
|--|---|--|
| <ul style="list-style-type: none"> <li>•Max. Blower CFM: 1,200</li> <li>•ACT Max. Blower CFM: 590, 390</li> <li>•Pro baffle filters</li> <li>•CleanAir function</li> </ul> | <ul style="list-style-type: none"> <li>•10" round vertical ducting</li> <li>•Insert height 12"*</li> <li>•Wireless remote control</li> <li>•Auto delay-off</li> </ul> | <ul style="list-style-type: none"> <li>•6W LumiLight LED lights</li> <li>•Dual-level lighting</li> <li>•6-speed electronic controls</li> </ul> |
|--|---|--|

Accessories	
MUA006A	Make-Up Air Kit (600 CFM)
MUA010A	Make-Up Air Kit (1,200 CFM)

\* Height dimension does not include 5" tall, 10" round duct adapter.



PRO COLLECTION

MONSOON II  
ACT

<b>MONSOON II 1,200 CFM Insert w/ LED Lighting and ACT™</b>		
AK9334BS	S	34-3/8" x 22-1/2"
AK9340BS	S	40-3/8" x 22-1/2"
AK9346BS	S	46-3/8" x 22-1/2"
AK9352BS	S	52-3/8" x 22-1/2"

- |  |   |  |
|--|---|--|
| <ul style="list-style-type: none"> <li>•Max. Blower CFM: 1,200</li> <li>•ACT Max. Blower CFM: 590, 390</li> <li>•Pro baffle filters</li> <li>•CleanAir function</li> </ul> | <ul style="list-style-type: none"> <li>•10" round vertical ducting</li> <li>•Insert height 12"*</li> <li>•Wireless remote control</li> <li>•Auto delay-off</li> </ul> | <ul style="list-style-type: none"> <li>•6W LumiLight LED lights</li> <li>•Dual-level lighting</li> <li>•6-speed electronic controls</li> </ul> |
|--|---|--|

Accessories	
MUA010A	Make-Up Air Kit

\* Height dimension does not include 5" tall, 10" round duct adapter.



CORE COLLECTION

MONSOON CONNECT  
ACT

<b>MONSOON CONNECT 700 CFM Insert w/ Zephyr Connect &amp; PowerWave™ Blower</b>		
AK9428BS	S	28-3/8" x 19-1/4"
AK9434BS	S	34-3/8" x 19-1/4"
AK9440BS	S	40-3/8" x 19-1/4"
AK9446BS	S	46-3/8" x 19-1/4"

- |  |   |   |
|--|---|---|
| <ul style="list-style-type: none"> <li>•Max. Blower CFM: 700 (included)</li> <li>•Max. Blower CFM: 1,300 (optional)</li> <li>•ACT Max. Blower CFM: 590, 390, 290</li> <li>•6-speed proximity controls</li> <li>•Zephyr Connect app compatible</li> </ul> | <ul style="list-style-type: none"> <li>•8" or 10" round vertical ducting</li> <li>•8" horizontal ducting</li> <li>•Insert height 12"</li> <li>•Pro baffle filters</li> <li>•Auto delay-off</li> </ul> | <ul style="list-style-type: none"> <li>•6W LumiLight LED lights</li> <li>•Tri-level lighting</li> <li>•Wireless remote control</li> <li>•CleanAir function</li> </ul> |
|--|---|---|

Accessories	
PBD-1300B*	1,300 CFM Internal Blower Kit (10" round duct)
14000005	RF Wireless Remote Control
MUA008A	Make-Up Air Kit
MUA010A	Make-Up Air Kit

\*PBD-1300B is a dual internal blower kit with a single blower and two blower openings. To complete the kit you must remove the blower from the hood and install it into the PBD-1300B kit.

**NOTE:** PBD-1300B blower is only compatible with the AK9434BS, AK9440BS, and AK9446BS models.

Finish: (S)-Stainless Steel

Warranty: 3 years non-consumable parts, 1 year labor

OUTDOOR  
INSERT / WALL

PRO COLLECTION



SPRUCE OUTDOOR

MODEL	FINISH	SIZE W x D
<b>SPRUCE</b>	1,200 CFM	Outdoor Insert for Wall or Island Installation

AK9834AS	S	34-3/8" x 22-1/2"
AK9840AS	S	40-3/8" x 22-1/2"
AK9846AS	S	46-3/8" x 22-1/2"
AK9858AS	S	58-7/8" x 22-1/2"

- |  |   |   |
|--|---|---|
| <ul style="list-style-type: none"> <li>•Max. Blower CFM: 1,200</li> <li>•3-speed controls</li> <li>•304 stainless steel</li> </ul> | <ul style="list-style-type: none"> <li>•10" round vertical ducting</li> <li>•Pro baffle filters</li> <li>•Directional lighting</li> </ul> | <ul style="list-style-type: none"> <li>•35W halogen lights</li> <li>•Dual-level lighting</li> </ul> |
|--|---|---|

**Accessories**

ZOB0040	Bloom™ GU10 LED (6W, 3000K)
---------	-----------------------------

PRO COLLECTION



CYPRESS OUTDOOR

MODEL	FINISH	SIZE W x D
<b>CYPRESS</b>	1,200 CFM	Outdoor 18in Tall Pro-Style Hood w/ 32" Depth

AK7836BS	S	36" x 32"
AK7842BS	S	42" x 32"
AK7848BS	S	48" x 32"
AK7854BS	S	54" x 32"

- |  |   |   |
|--|---|---|
| <ul style="list-style-type: none"> <li>•Max. Blower CFM: 1,200</li> <li>•3-speed controls</li> <li>•304 stainless steel</li> </ul> | <ul style="list-style-type: none"> <li>•10" round vertical &amp; horizontal ducting</li> <li>•Pro baffle filters</li> <li>•32" depth</li> </ul> | <ul style="list-style-type: none"> <li>•35W halogen lights</li> <li>•Dual-level lighting</li> </ul> |
|--|---|---|

**Accessories**

AK0736BS	12"H x 36"W 304 SS Duct Cover (For AK7836BS)
AK0742BS	12"H x 42"W 304 SS Duct Cover (For AK7842BS)
AK0748BS	12"H x 48"W 304 SS Duct Cover (For AK7848BS)
AK0754BS	12"H x 54"W 304 SS Duct Cover (For AK7854BS)
Z1C-0078	Duct Cover Extension - 22" width (For a 10'-12' ceiling)
ZOB0040	Bloom™ GU10 LED (6W, 3000K)

Finish: (S)-Stainless Steel

Warranty: 3 years non-consumable parts, 1 year labor

BRISAS  
RANGE HOODS



ACT™

MODEL	FINISH	SIZE W x D
<b>TRADITIONAL CHIMNEY WALL RANGE HOOD w/ Airflow Control Technology (ACT™)</b>		
BVE-E30BS	S	30" x 19-3/4"
BVE-E36BS	S	36" x 19-3/4"
<ul style="list-style-type: none"> <li>•Max. Blower CFM: 600</li> <li>•ACT Max. Blower CFM: 390, 290</li> <li>•Accommodates 9'4" ceiling height</li> </ul>	<ul style="list-style-type: none"> <li>•3 speed electronic controls</li> <li>•6" round vertical ducting</li> <li>•Aluminum mesh filters</li> </ul>	<ul style="list-style-type: none"> <li>•LED strip lighting</li> <li>•Dual-level lighting</li> </ul>
<b>Parts &amp; Accessories</b>		
BRC-0008	Recirculating Kit (w/ charcoal filters)	
ZOF-C091	Charcoal Filter Replacement (each)	
B1C-00VE	Duct Cover Extension Kit (up to 12' ceiling)	



ACT™

MODEL	FINISH	SIZE W x D
<b>CHIMNEY WALL RANGE HOOD W/ CURVED GLASS CANOPY w/ Airflow Control Technology (ACT™)</b>		
BMI-E30CG	S w/ Glass	30" x 19-3/4"
BMI-E36CG	S w/ Glass	36" x 19-3/4"
<ul style="list-style-type: none"> <li>•Max. Blower CFM: 600</li> <li>•ACT Max. Blower CFM: 390, 290</li> <li>•Accommodates 9'4" ceiling height</li> </ul>	<ul style="list-style-type: none"> <li>•3 speed electronic controls</li> <li>•6" round vertical ducting</li> <li>•Aluminum mesh filters</li> </ul>	<ul style="list-style-type: none"> <li>•LED strip lighting</li> <li>•Dual-level lighting</li> </ul>
<b>Parts &amp; Accessories</b>		
BRC-0006	Recirculating Kit (w/ charcoal filters)	
ZOF-C093	Charcoal Filter Replacement (each)	
B1C-00MI	Duct Cover Extension Kit (up to 12' ceiling)	



ACT™

MODEL	FINISH	SIZE W x D
<b>CHIMNEY ISLAND RANGE HOOD W/ CURVED GLASS CANOPY w/ Airflow Control Technology (ACT™)</b>		
BML-E30BG	S w/ Glass	30" x 25-9/16"
BML-E36BG	S w/ Glass	36" x 25-9/16"
<ul style="list-style-type: none"> <li>•Max. Blower CFM: 600</li> <li>•ACT Max. Blower CFM: 390, 290</li> <li>•Accommodates 8'11" ceiling height</li> </ul>	<ul style="list-style-type: none"> <li>•3 speed electronic controls</li> <li>•6" round vertical ducting</li> <li>•Aluminum mesh filters</li> </ul>	<ul style="list-style-type: none"> <li>•LED strip lighting</li> <li>•Dual-level lighting</li> </ul>
<b>Parts &amp; Accessories</b>		
BRC-0007	Recirculating Kit (w/ charcoal filters)	
ZOF-C094	Charcoal Filter Replacement (each)	
B1C-00ML	Duct Cover Extension Kit (up to 12' ceiling)	

Finish: (S)-Stainless Steel

Warranty: 1 year non-consumable parts, 1 year labor within service area

BRISAS WINE &  
BEVERAGE COOLERS



**MODEL FINISH SIZE W x H x D**

**SINGLE ZONE BEVERAGE COOLER**

**BBV24C01AG SS + Glass 24" x 33-7/8" x 23-1/2"\***

- |   |  |  |
|---|--|--|
| <ul style="list-style-type: none"> <li>•38° - 65° F</li> <li>•40 dBA</li> <li>•Capacitive touch controls</li> <li>•Vibration dampening system</li> <li>•Dual-pane glass</li> <li>•Sabbath mode</li> </ul> | <ul style="list-style-type: none"> <li>•8 bottle/112 12oz can capacity</li> <li>•1 black wire rack</li> <li>•2 transparent gray glass shelves</li> <li>•Field-reversible door</li> <li>•304-grade stainless steel</li> <li>•Zero-clearance door hinge</li> </ul> | <ul style="list-style-type: none"> <li>•PreciseTemp™</li> <li>•Active cooling technology</li> <li>•Built-in or freestanding</li> <li>•Blue LED lighting</li> <li>•Door open alarm</li> </ul> |
|---|--|--|

**Parts & Accessories**

Z0F-C004 Replacement Carbon Filter

\*Depth of cabinet with door, not including handle



**DUAL ZONE WINE COOLER**

**BWN24C02AG SS + Glass 24" x 33-7/8" x 23-1/2"\***

- |  |  |   |
|--|--|---|
| <ul style="list-style-type: none"> <li>•40° - 65° F (each zone)</li> <li>•40 dBA</li> <li>•Capacitive touch controls</li> <li>•Vibration dampening system</li> <li>•Dual-pane glass</li> <li>•Zero-clearance door hinge</li> </ul> | <ul style="list-style-type: none"> <li>•46 bottle capacity</li> <li>•5 black wire racks</li> <li>•Door open alarm</li> <li>•Field-reversible door</li> <li>•304-grade stainless steel</li> </ul> | <ul style="list-style-type: none"> <li>•PreciseTemp™</li> <li>•Active cooling technology</li> <li>•Built-in or freestanding</li> <li>•Blue LED lighting</li> <li>•Sabbath mode</li> </ul> |
|--|--|---|

**Parts & Accessories**

Z0F-C004 Replacement Carbon Filter

\*Depth of cabinet with door, not including handle



**FRENCH DOOR DUAL ZONE WINE & BEVERAGE COOLER**

**BWB24C32AG SS + Glass 24" x 33-7/8" x 23-1/2"\***

- |  |   |   |
|--|---|---|
| <ul style="list-style-type: none"> <li>•38° - 65° F (each zone)</li> <li>•40 dBA</li> <li>•Capacitive touch controls</li> <li>•Vibration dampening system</li> <li>•Dual-pane glass</li> <li>•Zero-clearance door hinge</li> </ul> | <ul style="list-style-type: none"> <li>•21 bottle/64 12oz can capacity</li> <li>•6 black wire racks</li> <li>•3 transparent gray glass shelves</li> <li>•Door open alarm</li> <li>•304-grade stainless steel</li> </ul> | <ul style="list-style-type: none"> <li>•PreciseTemp™</li> <li>•Active cooling technology</li> <li>•Built-in or freestanding</li> <li>•Blue LED lighting</li> <li>•Sabbath mode</li> </ul> |
|--|---|---|

**Parts & Accessories**

Z0F-C004 Replacement Carbon Filter

\*Depth of cabinet with door, not including handle

Door Finish: 304-grade Stainless Steel + Glass Finish: Black. Interior Finish: Black  
Warranty: 2 years non-consumable parts, 5 years compressor, 1 year labor

ACCESSORIES

**MODEL DESCRIPTION**

**HVAC Accessories**



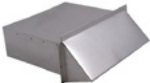
- AK00029 6" round in-line damper
- AK00049 7" round in-line damper
- AK00069 8" round in-line damper
- AK00079 10" round in-line damper



- AK00039 7 to 6" round reducer
- AK00037 8 to 6" round reducer
- AK00035 8 to 7" round reducer
- AK00040 10 to 8" round reducer



- AK00146 6" round exhaust roof cap w/bird screen
- AK00147 7" round exhaust roof cap w/bird screen
- AK00148 8" round exhaust roof cap w/bird screen
- AK00150 10" round exhaust roof cap w/bird screen



- AK00041 3-1/4" x 10" rectangular exhaust wall cap w/ damper & bird screen



- AK00042 6" round exhaust wall cap w/damper & bird screen
- AK00043 7" round exhaust wall cap w/damper & bird screen
- AK00044 8" round exhaust wall cap w/damper & bird screen
- AK00045 10" round exhaust wall cap w/damper & bird screen



- AK00030 6" round inlet wall cap w/bird screen
- AK00031 7" round inlet wall cap w/bird screen
- AK00032 8" round inlet wall cap w/bird screen
- AK00052 10" round inlet wall cap w/bird screen



- AK00066 6" round damper with collar
- AK00067 7" round damper with collar

**Universal Make-Up Air Damper Kits**



- MUA006A 6" round make-up air damper kit for up to 600 CFM
- MUA008A 8" round make-up air damper kit for up to 1,000 CFM
- MUA010A 10" round make-up air damper kit for up to 1,200 CFM

**DID YOU KNOW** Zephyr's Universal Make-Up Air Dampers can be used with any range hood over 300 CFM, even non-Zephyr branded range hoods.

**Universal Telescopic Stainless Steel Backsplash**



- AK1710 Backsplash, Telescopic, 30", SS
- AK1716 Backsplash, Telescopic, 36", SS
- AK1712 Backsplash, Telescopic, 42", SS
- AK1718 Backsplash, Telescopic, 48", SS
- AK1714 Backsplash, Telescopic, 54", SS

**DID YOU KNOW** The telescopic stainless steel backsplash can be used with any hood with the same width.



**Warm White LED Bulb - Direct Replacement for GU10 Halogen Bulbs**

- ZOB0040 Bloom™ GU10 LED (6W, 3000K)





NOTES

---

---

---

---

---

---

---

---

---

---

---

---

---

---

---

---

---

---

---

---

---

---

---

---

---

---

---

NOTES

---

---

---

---

---

---

---

---

---

---

---

---

---

---

---

---

---

---

---

---

---

---

---

---

---

# PRODUCT GUIDE 2021

## ZEPHYR

T 800 361 0799 F 450 682 7943

[www.distinctive-online.com](http://www.distinctive-online.com) [info@distinctive-online.com](mailto:info@distinctive-online.com)

### EASTERN CANADA

Head Office & Warehouse  
2025 Cunard Street  
Laval, QC H7S 2N1

### WESTERN CANADA

Showroom  
Unit 120 - 11120 Horseshoe Way  
Richmond, BC V7A 5H7

### PARTS & SERVICE

[service@distinctive-online.com](mailto:service@distinctive-online.com)  
1-800-561-7265

### ORDER DESK

[orderdesk@distinctive-online.com](mailto:orderdesk@distinctive-online.com)