



PICTURES MAY DIFFER FROM ACTUAL PRODUCTS.

**RTA** outdoor  
living

**COYOTE**  
Outdoor Living

## PRODUCT GUIDE **2021**

## TABLE OF CONTENTS

About RTA .....	3
Construction Method .....	4
Surround Profile & Island Countertops .....	5
Grill Island Series .....	6
Premium Grill Island Series .....	7-8
Pellet Grill Island Series .....	9-10
Coyote Grills .....	11-13
Coyote Refrigeration .....	14
Coyote Storage Solutions .....	15
Warranty .....	16
Notes.....	17-19

## ABOUT

RTA (ready-to-assemble) Outdoor Living was born out of a desire to serve homeowners. They achieve this through our outdoor living features which promote gathering and human connection. At the heart of the RTA system is a simplified alternative to outdoor masonry. Through this approach, they avoid the high costs associated with building outdoor kitchens from scratch. Their easy-to-build options make the luxury of an outdoor grill island accessible to everyone. It's no wonder countless homeowners have trusted them to create their own backyard oasis since 2017.

They manufacture their outdoor products in Cambridge City, Indiana. Each outdoor kitchen is hand-made in their Indiana manufacturing plant, then delivered and installed nationwide.



### BUILT TO LAST

Being able to share your new kitchen with friends and family for years to come is why all RTA kitchens are engineered with a superior material designed to withstand any climate. Delivered and installed nationwide, RTA outdoor kitchens are backed by a limited lifetime warranty.

### INSTALLED IN HOURS

Building an outdoor kitchen has never been easier with RTA's ready-to-assemble construction process allowing our kitchens to be installed in hours, with no disruption to your backyard, allowing you to enjoy your new outdoor space the same day

### BEST-IN-CLASS APPLIANCES

RTA's brand partnership with Coyote Outdoor Living's grills and outdoor appliances, constructed of premium-grade 304 stainless steel throughout, allows RTA to achieve the common goal of simplifying the design, selection, and building process of outdoor kitchens for you.

Specifications and features may vary. Please refer to the manufacturer's website for the latest updates.



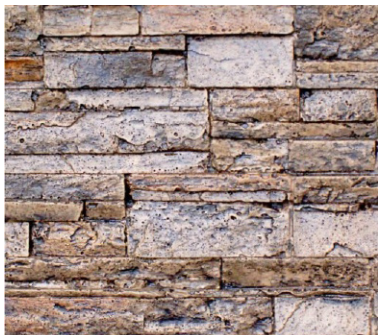
## CONSTRUCTION METHOD

CONSTRUCTION	Engineered Concrete Composite panels, reinforced with composite rebar and aluminum alignment channels.
COUNTERTOP	Comes standard with 1.25" chiseled edge countertop made from Engineered Concrete Composite.
BUILD/INSTALL	Panels and countertops can be cart or 2-person hand carried into location. Installation includes assembly of panels, placing countertop, and inserting grill and appliances.
RETROFIT/FOOTER	Can be installed over almost any existing surface - no footing required. Patent pending alignment channel system allows for adjustments to deal with up to 2.5" pitch.
FINISH	Available in Stacked Stone, Weathered Wood, and Reclaimed Brick.
WEATHER DURABILITY	Engineered to perform in all climates. Nothing to rot, rust or erode.

## VISIT VIDEO LINK FOR EASY ASSEMBLY INSTRUCTIONS

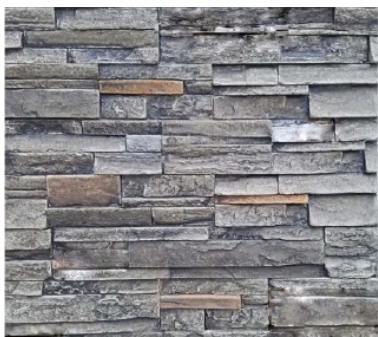
Check out [rtaoutdoorliving.com/design-help](http://rtaoutdoorliving.com/design-help) for more Design Ideas and Assistance.

## SURROUND PROFILE & ISLAND COUNTERTOPS



### **STACKED STONE | BROWN TERRA**

Includes brown picture-frame corners and a taupe countertop.



### **STACKED STONE | STONE GRAY**

Includes gray picture-frame corners and a distressed gray countertop.



### **STACKED STONE | MODERN WHITE**

Includes white picture-frame corners and an off-white countertop

## GRILL ISLAND SERIES

### 5' GRILL ISLAND

Entertain your guests while enjoying the outdoors with the cooking, preparation, and storage space provided by a 5 foot RTA Outdoor Living BBQ grill island.

#### FEATURES & DETAILS

- Coyote 28" C-Series Grill (C1C28 LP/NG)
- 26" Double Access Doors (CDA2426)
- 9-1/2 sq. ft. of Preparation Space
- Stacked Stone Proprietary Concrete Island Frame
- 1.25" Thick Chiseled-Edge Concrete Countertop
- Island Surround Dimensions: 60" Width x 34.5" Height x 28" Depth
- Countertop Dimensions: 64" Width x 1.25" Height x 32" Depth
- Island Total Weight: 586 lbs

### ISLAND FINISHING OPTIONS



**RTAC-G5-SG**

Stacked Stone - Stone Gray



**RTAC-G5-SB**

Stacked Stone - Brown Terra

## PREMIUM GRILL ISLAND SERIES

### 6' PREMIUM GRILL ISLAND

A functional grill island with ample preparation space and an outdoor refrigerator to add maximum utility to any outdoor living room.

#### FEATURES & DETAILS

- Coyote 30" S-Series Grill (C2SL30 LP/NG)
- Coyote 21" Outdoor Refrigerator (CBIR-R/L)
- 31" Double Access Doors (CDA2431)
- More than 13 sq. ft. of Preparation Space
- Stacked Stone Proprietary Concrete Island Frame
- 1.25" Thick Chiseled-Edge Concrete Countertop
- Island Surround Dimensions: 72" Width x 34.5" Height x 28" Depth
- Countertop Dimensions: 76" Width x 1.25" Height x 32" Depth
- Island Total Weight: 778 lbs

### ISLAND FINISHING OPTIONS



**RTAC-G6-P-SG**

Stacked Stone - Stone Gray



**RTAC-G6-P-SB**

Stacked Stone - Brown Terra

## PREMIUM GRILL ISLAND SERIES

### 8' PREMIUM GRILL ISLAND

Easily entertain and grill for all size gatherings and parties with the 8 foot RTA Outdoor Living BBQ grill island with Coyote Luxury S-Series grill upgrade.

#### FEATURES & DETAILS

- Coyote 36" C-Series Grill (C2C36 LP/NG) or Coyote Luxury 36" S-Series Grill (C2SL36 LP/NG)
- Coyote 24" Outdoor Refrigerator (C1BIR24-R/L)
- 31" Double Access Doors (CDA2431)
- 14" Single Pull-Out Trash & Recycle (CSTC)
- More than 14 sq. ft. of Preparation Space
- Stacked Stone Proprietary Concrete Island Frame
- 1.25" Thick Chiseled-Edge Concrete Countertop
- Island Surround Dimensions: 90" Width x 34.5" Height x 28" Depth
- Countertop Dimensions: 94" Width x 1.25" Height x 32" Depth
- Island Total Weight: 980 lbs

#### ISLAND FINISHING OPTIONS



**RTAC-G8-PF-SB**

Stacked Stone - Brown Terra



**RTAC-G8-PF-SG**

Stacked Stone - Stone Gray



**RTAC-G8-PF-SW**

Stacked Stone - White



## PELLET GRILL ISLAND SERIES

### 6' PELLET GRILL ISLAND

Grill chef-quality meals for your friends and family by adding the versatile 6 foot RTA Outdoor Living Pellet Grill Island to your backyard.

#### FEATURES & DETAILS

- Coyote 28" Pellet Grill (C1P28)
- Coyote 28" Storage Drawer (CSSD28)
- Coyote 21" Outdoor Refrigerator (CBIR-R/L)
- More than 12 sq. ft. of Preparation Space
- Stacked Stone Proprietary Concrete Island Frame
- 1.25" Thick Chiseled-Edge Concrete Countertop
- Island Surround Dimensions: 72" Width x 34.5" Height x 28" Depth
- Countertop Dimensions: 76" Width x 1.25" Height x 32" Depth
- Island Total Weight: 694 lbs

#### ISLAND FINISHING OPTIONS



**RTAC-G6-PW-SG**

Stacked Stone - Stone Gray



**RTAC-G6-PW-SB**

Stacked Stone - Brown Terra

## PELLET GRILL ISLAND SERIES

### 8' PELLET GRILL ISLAND

Easily entertain and grill for all size gatherings and parties with the 8 foot RTA Outdoor Living Pellet grill island.

#### FEATURES & DETAILS

- Coyote 36" Pellet Grill (C1P36)
- Coyote 21" Outdoor Refrigerator (CBIR-R/L)
- Coyote 36" Storage Drawer (CSSD36)
- More than 14 sq. ft. of Preparation Space
- Stacked Stone Proprietary Concrete Island Frame
- 1.25" Thick Chiseled-Edge Concrete Countertop
- Island Surround Dimensions: 90" Width x 34.5" Height x 28" Depth
- Countertop Dimensions: 94" Width x 1.25" Height x 32" Depth
- Island Total Weight: 962 lbs

#### ISLAND FINISHING OPTIONS



**RTAC-G8-W-SB**

Stacked Stone - Brown Terra



**RTAC-G8-W-SG**

Stacked Stone - Stone Gray

## COYOTE GRILLS



### 28" BUILT-IN GRILL - FOR 5' GRILL ISLAND

#### MODEL

C1C28 LP / C1C28 NG

#### FEATURES

- Two high performance Coyote Infinity Burners™
- 640 sq. in. cooking area
- Up to 40,000 BTU
- Interior grill lighting
- Stainless steel heat control grids
- 304 stainless steel



### 30" BUILT-IN GRILL - FOR 6' PREMIUM ISLAND

#### MODEL

C2SL30LP/C2SL30NG

#### FEATURES

- Two high performance Coyote Infinity Burners™, plus one infrared rear burner, plus one Coyote RapidSear™ infrared burner
- 700 sq. in. cooking area
- Up to 70,000 BTU
- 304 stainless steel
- Interior grill lighting
- LED illuminated knobs
- Integrated wind guard
- Ceramic Briquettes Heat Control Grids
- Included: rotisserie kit and smoker box (CSBX)

## COYOTE GRILLS



### 36" BUILT-IN GRILL - FOR 8' PREMIUM ISLAND

#### MODEL

C2C36LP / C2C36NG

#### FEATURES

- Four high performance Coyote Infinity Burners
- 875 sq. in. cooking area
- Up to 80,000 BTU
- Interior grill lighting
- Stainless steel heat control grids
- 304 stainless steel



### 36" BUILT-IN GRILL - FOR 8' PREMIUM ISLAND

#### MODEL

C2SL36LP / C2SL36NG

#### FEATURES OF PELLET GRILL

- Three high performance Coyote Infinity Burners™, plus one infrared rear burner, plus one Coyote RapidSear™ infrared burner
- 875 sq. in. cooking area
- Up to 90,000 BTU
- 304 stainless steel
- Interior grill lighting
- LED illuminated knobs
- Integrated wind guard
- Ceramic Briquettes Heat Control Grids



## COYOTE GRILLS



### 28" BUILT-IN PELLET GRILL - FOR 6' PELLET ISLAND

**MODEL**

C1P28



### 36" BUILT-IN PELLET GRILL - FOR 8' PELLET ISLAND

**MODEL**

C1P36

## COYOTE PELLET GRILL FEATURES

- Intuitive digital touch control
- Dual fan, auger & drip tray
- Smart drop™ pellet feed
- Front loading pellet hopper
- Spring assist hood
- Double-walled canopy with gasket
- Versa-Rack™ for multiple cooking surfaces
- 304 Stainless steel
- Interior grill lighting
- Led light for temperature probes
- Laser cut grates
- Built-in timer & wind guard
- 3 food temperature probes included
- Electric power ignition (120V; 5A; 60HZ)
- Individual smoke & sear grate included
- Hopper capacity of 12 lbs
- Temperature range of 175°F - 650°F
- Total Cooking Surface:
  - 28" - 800 sq. in.
  - 36" - 1,056 sq. in.

## COYOTE REFRIGERATION



### 21" OUTDOOR REFRIGERATOR FOR 6' PREMIUM ISLAND

#### MODEL

CBIR-R/CBIR-L

#### FEATURES

- Outdoor rated, freestanding refrigerator
- Automatic defrost
- Stainless steel cabinet construction; white interior
- Capacity of 4.1 cubic feet
- Interior light and adjustable manual thermostat
- Front vented for built-in application
- Left or right hinge swing
- CBIR-L : left hinge / CBIR-R : right hinge



### 24" OUTDOOR REFRIGERATOR - FOR 8' PREMIUM ISLAND

#### MODEL

C1BIR24-R/C1BIR24-L

#### FEATURES

- Outdoor rated, freestanding refrigerator with lock
- Automatic defrost
- Stainless steel cabinet construction; graphite interior
- Capacity of 5.5 cubic feet
- Interior light and adjustable digital thermostat
- Front vented for built-in application
- Hidden hinge with left or right swing
- C1BIR24-L : left hinge / C1BIR24-R : right hinge

## COYOTE STORAGE SOLUTIONS

All Coyote Storage Products share the following features:

- Completely constructed with 304 stainless steel
- Professional style Coyote stainless steel handle
- Commercial quality hinges for smooth operation
- Rigid construction to ensure long term durability
- Open interior for island/wall access capability
- Beveled trim



CDA2426

### 24" X 26" DOUBLE ACCESS DOORS - FOR 5' GRILL ISLAND

**MODEL**

CDA2426



CDA2431

### 24" X 31" DOUBLE ACCESS DOORS - FOR 6' & 8' PREMIUM ISLAND

**MODEL**

CDA2431



CSTC

### 14" SINGLE PULL-OUT TRASH & RECYCLE - FOR 8' PREMIUM ISLAND

**MODEL**

CSTC



CSTC - inside view



### 28" STORAGE DRAWER - FOR 6' PELLET ISLAND

**MODEL**

CSSD28

### 36" STORAGE DRAWER - FOR 8' PELLET ISLAND

**MODEL**

CSSD36

## LIMITED PRODUCT WARRANTY

### READY-TO-ASSEMBLE OUTDOOR LIVING LIMITED WARRANTY

Lifetime Warranty on Island Base & 2 year warranty on Countertop.

RTA Outdoor Living warrants to the original purchaser at the original site of delivery with proof of purchase that when subject to normal residential use, the RTA Outdoor Living structure shall be free from defects in workmanship and materials and has a lifetime limited structural warranty and a two - year surface finish warranty, subject to limitations and disclaimers set forth below.

RTA Outdoor Living's obligation under this warranty is limited to repair or replacement, at our option, of the product during the warranty period. Warranty does not cover labor to remove or install materials and does cover the cost of shipping replacement product. The extent of any liability of RTA Outdoor Living under this warranty is limited to repair or replacement.

The warranty period is not extended by such repair or replacement. RTA Outdoor Living's manufacturing process has been designed to imitate and re - imagine real stone, wood and other aesthetic surfaces. These surfaces may contain small air holes, surface cracks, and surface anomalies as part of the surface aesthetics and these are not considered manufacturing defects.

For warranty on Coyote products, please refer to Coyote's website: [coyoteoutdoor.com/warranty](http://coyoteoutdoor.com/warranty)



[illegible]

## This image shows a single sheet of white paper with horizontal ruling lines. The lines are evenly spaced and run across the width of the page. There are no margins, text, or other markings on the paper.

## This image shows a single sheet of white paper with horizontal ruling lines. The lines are evenly spaced and run across the width of the page. There are no margins, text, or other markings on the paper.

## PRODUCT GUIDE 2021



T 800 361 0799 F 450 682 7943

[www.distinctive-online.com](http://www.distinctive-online.com) [info@distinctive-online.com](mailto:info@distinctive-online.com)

### EASTERN CANADA

Head Office & Warehouse  
2025 Cunard Street  
Laval, QC H7S 2N1

### WESTERN CANADA

Showroom  
Unit 120 - 11120 Horseshoe Way  
Richmond, BC V7A 5H7

### PARTS & SERVICE

[service@distinctive-online.com](mailto:service@distinctive-online.com)

### ORDER DESK

[orderdesk@distinctive-online.com](mailto:orderdesk@distinctive-online.com)