



ZEPHYR

PRODUCT GUIDE 2020

Zephyr is a **Distinctive** brand

COLLECTION KEY

- C** CORE
P PRO
D DESIGNER

MODEL + INSTALL TYPE
PAGE
DOWNDRAFT

C Sorrento (DD1)	15
D Lift (DLI)	15

UNDER-CABINET

C Breeze I (AK11)	1
C Breeze II (AK12)	1
C Cyclone (AK65)	2
C Hurricane (AK25)	2
C Typhoon (AK21)	2
C Pyramid (ZPY)	3
C Tamburo (ZTA)	3
C Pisa (ZPI)	4
C Genova (ZGE)	4
P Gust (AK71)	5
C Tempest I (AK70)	5
C Tempest II (AK70)	6
P Titan (AK7)	6

WALL

C Ombra (ZOM)	7
P Savona (ZSA)	7
D Anzio (ZAN)	8
D Ravenna (ZRV)	8
D Roma (ZRO)	9
C Roma Groove (ZRG)	9
C Siena ES (ZSI) DCBL	9
C Siena Pro (ZSP)	9
D Lucé (ZLU)	10
D Venezia (ZVE)	10
C Modena (ZMO)	10
C Milano (ZMI)	11
C Verona (ZVO)	11
C Duo (ADU)	12
C Layers (ALA)	12
C Okeanito (COK)	13
C Okeanito Limited Edition (COK)	13
P Incline (AIN)	14
P Wave (AWA)	14

MODEL + INSTALL TYPE
PAGE
ISLAND

C Roma (ZRM)	16
D Anzio (ZAZ)	16
D Ravenna (ZRE)	16
C Lucé (ZLC)	17
D Milano (ZML)	17
C Modena (ZMD)	17
C Duo (ADL)	18
C Napoli (ZNA)	18
C Verona (ZVN)	18
C Siena Pro (ZSL)	19
C Layers (ALL)	19
D Trapeze (CTP)	20
C Lux (ALU)	20

INSERT

C Tornado Mini (AK84)	21
C Twister (AK80)	21
P Twister ES (AK80)	21
C Tornado I (AK81)	22
P Tornado II (AK82)	22
C Tornado III (AK83)	22
P Vortex (AK90)	23
P Vortex ES (AK90)	23
C Monsoon Mini (AK91)	23
C Monsoon I (AK92)	24
C Monsoon II (AK93)	24
C Monsoon (AK94)	24
C Willow (AK88)	25
P Spruce (AK98)	25
P Cypress (AK78)	25

PRESRV™ WINE & BEVERAGE COOLERS

Wine Coolers	26
Beverage Coolers	28
French Door Wine & Beverage Coolers	29
Full Height Wine Coolers	30
Outdoor Beverage Cooler	30

ACCESSORIES

Ventilation Accessories	31
Wine & Beverage Accessories	32
Notes	33-35

UNDER-CABINET

CORE COLLECTION



BREEZE I

MODEL

FINISH

SIZE W x D

BREEZE I 250 CFM Range Hood w/ Slide Controls and Recirculating Option

AK1124W	W	24" x 20-3/32"
AK1124S	S	24" x 20-3/32"
AK1100B	B	30" x 20-3/32"
AK1100W	W	30" x 20-3/32"
AK1100S	S	30" x 20-3/32"
AK1136B	B	36" x 20-3/32"
AK1136W	W	36" x 20-3/32"
AK1136S	S	36" x 20-3/32"

Max. Blower CFM: 250
3-1/4"x10" vertical ducting
35W halogen lights
Sones: 1.8 - 3.5
3-1/4"x10" horizontal ducting

Dual-level lighting
5-1/2" body height
3 speed slide controls
Extra-wide mesh filters

Accessories

0AK11-21001	Recirculating Kit (w/ charcoal filter)
0AK11-20001	Charcoal Filter Replacement (2 per kit)
Z0B0023	Halogen Bulb (GU10 35W)
Z0B0040	Bloom™ GU10 LED (6W, 3000K)

CORE COLLECTION



BREEZE II

BREEZE II 400 CFM Range Hood w/ Electronic Controls and BriteStrip LED Lighting

AK1200BB	B	30" x 20-3/32"
AK1200BW	W	30" x 20-3/32"
AK1200BS	S	30" x 20-3/32"
AK1200BBS	Blk SS	30" x 20-3/32"
AK1236BB	B	36" x 20-3/32"
AK1236BW	W	36" x 20-3/32"
AK1236BS	S	36" x 20-3/32"
AK1236BBS	Blk SS	36" x 20-3/32"

Max. Blower CFM: 400
3-1/4"x10" vertical ducting
BriteStrip™ LED lighting
Sones: 1.9 - 4.5
3-1/4"x10" horizontal ducting

Dual-level lighting
5-1/2" body height
3 speed electronic controls
Extra-wide mesh filters
5 minute delay-off

Accessories

0AK11-21001	Recirculating Kit (w/ charcoal filter)
0AK11-20001	Charcoal Filter Replacement (2 per kit)

DID YOU KNOW The Breeze II now includes BriteStrip LED™ lighting.

Finish: (B)-Black (W)-White (S)-Stainless Steel (Blk SS)-Black Stainless Steel
Warranty: 3 years non-consumable parts, 1 year labor

UNDER-CABINET



CYCLONE

MODEL FINISH SIZE W x D

CYCLONE 600 CFM Self-Cleaning Hood w/ Slide Controls

AK6500BB	B	30" x 22-1/4"
AK6500BW	W	30" x 22-1/4"
AK6500BS	S	30" x 22-1/4"
AK6500BBS	Blk SS	30" x 22-1/4"
AK6536BB	B	36" x 22-1/4"
AK6536BW	W	36" x 22-1/4"
AK6536BS	S	36" x 22-1/4"
AK6536BBS	Blk SS	36" x 22-1/4"
AK6542BS	S	42" x 22-1/4"

Max. Blower CFM: 600
6" or 3-1/4"x10" vertical ducting
35W halogen lights
Sones: 1.5-5
3-1/4"x10" horizontal ducting

Dual-level lighting
6-3/8" body height
3 speed mechanical controls
Self cleaning

Accessories

Z0B0023	Halogen Bulb (GU10 35W 120V)
Z0B0040	Bloom™ GU10 LED (6W, 3000K)
MUA006A	Make-Up Air Kit



HURRICANE
ACT™

HURRICANE 695 CFM Self-Cleaning Hood w/ Airflow Control Technology (ACT™)

AK2500BB	B	30" x 22-1/8"
AK2500BW	W	30" x 22-1/8"
AK2500BS	S	30" x 22-1/8"
AK2536BB	B	36" x 22-1/8"
AK2536BW	W	36" x 22-1/8"
AK2536BS	S	36" x 22-1/8"

Max. Blower CFM: 695
7" or 3-1/4"x10" vertical ducting
35W halogen lights
ACT Max. Blower CFM: 390, 290
3-1/4"x10" horizontal ducting
Dual-level lighting

Sones: 1.5-5.5
3 speed electronic controls
5 minute delay-off
7" body height
Self cleaning

Accessories

Z0B0023	Halogen Bulb (GU10 35W 120V)
Z0B0040	Bloom™ GU10 LED (6W, 3000K)
MUA008A	Make-Up Air Kit



TYPHOON
ACT™

TYPHOON 850 CFM Self-Cleaning Hood w/ Airflow Control Technology (ACT™)

AK2100BB	B	30" x 20-3/4"
AK2100BW	W	30" x 20-3/4"
AK2100BS	S	30" x 20-3/4"
AK2136BB	B	36" x 20-3/4"
AK2136BW	W	36" x 20-3/4"
AK2136BS	S	36" x 20-3/4"
AK2142BS	S	42" x 20-3/4"
AK2148BS	S	48" x 20-3/4"

Max. Blower CFM: 850
7" or 3-1/4"x10" vertical ducting
35W halogen lights
ACT Max. Blower CFM: 390, 290
3-1/4"x10" horizontal ducting
Dual-level lighting

Sones: 0.9-5
6 speed capacitive touch controls
5 minute delay-off
7-7/8" body height
Self cleaning

Accessories

Z0B0023	Halogen Bulb (GU10 35W 120V)
Z0B0040	Bloom™ GU10 LED (6W, 3000K)
MUA008A	Make-Up Air Kit

Finish: (B)-Black (W)-White (S)-Stainless Steel (Blk SS)-Black Stainless Steel
Warranty: 10 years non-consumable parts, 1 year labor

UNDER-CABINET



PYRAMID

MODEL FINISH SIZE W x D

PYRAMID 400 CFM Designer Hood w/ Pyramid-Shaped Body

ZPY-E30AS	S	30" x 21"
ZPY-E36AS	S	36" x 21"

PYRAMID 290 CFM Designer Hood w/ Pyramid-Shaped Body

ZPY-E30AS290	S	30" x 21"
--------------	---	-----------

Max. Blower CFM: 400 or 290	Dual-level lighting
7" or 3-1/4"x10" vertical ducting	7-3/8" body height
50W halogen lights	3 speed slide controls
Sones: 2-5 or 1.1-3.2	Adjustable utensil bar
3-1/4"x10" horizontal ducting	

Accessories

ZRC-0200	Recirculating Kit (w/ charcoal filters)
ZOF-C002	Charcoal Filter Replacement (Each)
ZOB0020	Halogen Bulb (GU10 50W 120V)
ZOB0040	Bloom™ GU10 LED (6W, 3000K)



TAMBURO

TAMBURO 400 CFM Designer Hood w/ Crescent-Shaped Body

ZTA-E30AS	S	30" x 21-1/8"
ZTA-E36AS	S	36" x 21-1/8"

TAMBURO 290 CFM Designer Hood w/ Crescent-Shaped Body

ZTA-E30AS290	S	30" x 21-1/8"
--------------	---	---------------

Max. Blower CFM: 400 or 290	Dual-level lighting
7" or 3-1/4"x10" vertical ducting	7-3/8" body height
50W halogen lights	3 speed slide controls
Sones: 2-5 or 1.1-3.2	Adjustable utensil bar
3-1/4"x10" horizontal ducting	

Accessories

ZRC-0200	Recirculating Kit (w/ charcoal filters)
ZOF-C002	Charcoal Filter Replacement (Each)
ZOB0020	Halogen Bulb (GU10 50W 120V)
ZOB0040	Bloom™ GU10 LED (6W, 3000K)

DID YOU KNOW Zephyr Pyramid, Tamburo and Gust under-cabinet hoods all include adjustable utensil rails to hang common cooking utensils.

Finish: (S)-Stainless Steel

Warranty: 3 years non-consumable parts, 1 year labor

UNDER-CABINET

CORE COLLECTION



PISA

MODEL	FINISH	SIZE W x D
PISA 500 CFM Designer Hood w/ Sliding Glass		
ZPI-E24AG	S* w/ Glass	24" x 18-3/4"
ZPI-E24AW	W* w/ Glass	24" x 18-3/4"
ZPI-E30AG	S* w/ Glass	30" x 18-3/4"
ZPI-E30AW	W* w/ Glass	30" x 18-3/4"
ZPI-E36AG	S* w/ Glass	36" x 18-3/4"
PISA 290 CFM Designer Hood w/ Sliding Glass		
ZPI-E24AG290	S* w/ Glass	24" x 18-3/4"
ZPI-E24AW290	W* w/ Glass	24" x 18-3/4"
ZPI-E30AG290	S* w/ Glass	30" x 18-3/4"
ZPI-E30AW290	W* w/ Glass	30" x 18-3/4"
ZPI-E36AG290	S* w/ Glass	36" x 18-3/4"
Max. Blower CFM: 290, 500 6" round vertical ducting 50W halogen lights		
Sones 1.3-3.2 or 1.7-5.3 6" round horizontal ducting Sliding glass canopy		1-1/2" body height** 3 speed slide controls
Accessories		
ZRC-00PI	Recirculating Kit (w/ charcoal filters)	
ZOF-C0PI	Charcoal Filter Replacement (each)	
ZOB0020	Halogen Bulb (GU10 50W 120V)	
ZOB0040	Bloom™ GU10 LED (6W, 3000K)	

*Refers to handle color. Body is painted gray.

**A 9-9/16" blower housing is installed in the upper cabinet.

CORE COLLECTION



GENOVA

GENOVA 500 CFM Designer Hood w/ Smoke Gray Sliding Glass		
ZGE-E30AS	S w/Glass	30" x 18"
ZGE-E36AS	S w/Glass	36" x 18"
GENOVA 290 CFM Designer Hood w/ Smoke Gray Sliding Glass		
ZGE-E30AS290	S w/Glass	30" x 18"
ZGE-E36AS290	S w/Glass	36" x 18"
Max. Blower CFM: 500 or 290 6" round vertical ducting 50W halogen lights		
Sones: 1.7-5.3 or 1.4-2.8 Sliding glass canopy Dual-level lighting		3" body height* 3 speed electronic controls Remote control option
Accessories		
ZRC-00GE	Recirculating Kit (return air vent & charcoal filter)	
ZOF-C0GE	Charcoal Filter Replacement (Each)	
ZOB0020	Halogen Bulb (GU10 50W 120V)	
ZOB0040	Bloom™ GU10 LED (6W, 3000K)	
14000005	RF Wireless Remote Control	
MUA006A	Make-Up Air Kit	

*An 11" blower housing is installed in the upper cabinet.

Finish: (W)-White (S)-Stainless Steel

Warranty: 3 years non-consumable parts, 1 year labor (ZPI, ZGE)

UNDER-CABINET

CORE COLLECTION



GUST

MODEL	FINISH	SIZE W x D
GUST 400 CFM 7-3/8in Tall Euro-Pro Hood w/ Mesh Filters		
AK7100AS	S	30" x 21"
AK7136AS	S	36" x 21"
GUST 400 CFM 7-3/8in Tall Euro-Pro Hood w/ Baffle Filters		
AK7100AS-BF	S	30" x 21"
AK7136AS-BF	S	36" x 21"
GUST 290 CFM 7-3/8in Tall Euro-Pro Hood w/ Mesh Filters		
AK7100AS290	S	30" x 21"
AK7136AS290	S	36" x 21"
Max. Blower CFM: 400 or 290 7" or 3-1/4"x10" vertical ducting 50W halogen lights		
Sones: 2-5 or 1.1-3.2 3-1/4"x10" horizontal ducting Dual-level lighting		
7-3/8" body height 3 speed slide controls Adjustable utensil bar		
Accessories		
ZRC-0200	Recirculating Kit (w/ charcoal filters)	
Z0F-C002	Charcoal Filter Replacement (Each)	
Z0B0020	Halogen Bulb (GU10 50W 120V)	
Z0B0040	Bloom™ GU10 LED (6W, 3000K)	

PRO COLLECTION



TEMPEST I

ACT



shown with recirculating kit

TEMPEST I 650 CFM 11in Tall Pro-Style Hood w/ Airflow Control Technology (ACT™)		
AK7000BS	S	30" x 22-1/2"
AK7036BS	S	36" x 22-1/2"
AK7042BS	S	42" x 22-1/2"
Max. Blower CFM: 650 (included) 8" or 10" round vertical ducting 35W halogen lights		
Max. Blower CFM: 1200 (optional) 8" or 3-1/4"x10" horizontal ducting		
Dual-level lighting ACT Max. Blower CFM: 390, 290 6 speed electronic controls		
Pro baffle filters 11" body height		
Sones: 1-6 (650) or 3.5-9 (1200) Wireless remote option CleanAir function		
Accessories and Blowers		
AK0720	12" Duct Cover (For AK7000BS)	
AK0726	12" Duct Cover (For AK7036BS)	
AK0722	12" Duct Cover (For AK7042BS)	
ZRC-7000B*	Recirculating Kit (For AK7000BS, w/ charcoal filters)	
ZRC-7036B*	Recirculating Kit (For AK7036BS, w/ charcoal filters)	
ZRC-7042B*	Recirculating Kit (For AK7042BS, w/ charcoal filters)	
Z0F-C002	Charcoal Filter Replacement (Each)	
AK0710	SS Backsplash w/ Shelves (For AK7000BS)	
AK0716	SS Backsplash w/ Shelves (For AK7036BS)	
AK0712	SS Backsplash w/ Shelves (For AK7042BS)	
Z0B0023	Halogen Bulb (GU10 35W 120V)	
Z0B0040	Bloom™ GU10 LED (6W, 3000K)	
PBD-1200A**	1200 CFM Internal Blower Kit (10" round duct)	
14000005	RF Wireless Remote Control	
MUA008A	Make-Up Air Kit (650 CFM)	
MUA010A	Make-Up Air Kit (1200 CFM)	

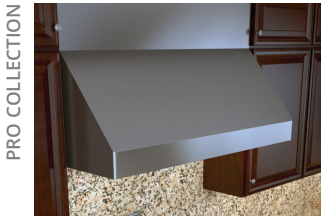
*ZRC-70xxB recirculating kits are compatible with 650cfm internal blowers only (blower included with hood). ZRC-70xxB includes a 4-inch tall return-air box, so please plan your installation accordingly.

PBD-1200A is a dual internal blower kit with a single blower and two blower openings. To complete the kit you must remove the blower from the hood and install it into the PBD-1200A kit. **NOTE: PBD-1200A blower is only compatible with models AK7036BS and AK7042BS.

Finish: (S)-Stainless Steel

Warranty: 3 years non-consumable parts, 1 year labor

UNDER-CABINET



TEMPEST II
ACT™

MODEL	FINISH	SIZE W x D
TEMPEST II 650 CFM 18in Tall Pro-Style Hood w/ Airflow Control Technology (ACT™)		
AK7500BS	S	30" x 24"
AK7536BS	S	36" x 24"
AK7542BS	S	42" x 24"
AK7548BS	S	48" x 24"
AK7554BS	S	54" x 24"
Max. Blower CFM: 650 (included) 8" or 10" round vertical ducting 35W halogen lights Max. Blower CFM: 1200 (optional) 8", 10" or 3-1/4"x10" horizontal		
ducting Dual-level lighting ACT Max. Blower CFM: 390, 290 6 speed electronic controls Pro baffle filters		
Sones: 1-6 (650) or 3.5-9 (1200) Wireless remote option CleanAir function		

Accessories and Blowers

AK0720	12" Duct Cover (For AK7500BS)
AK0726	12" Duct Cover (For AK7536BS)
AK0722	12" Duct Cover (For AK7542BS)
AK0728	12" Duct Cover (For AK7548BS)
AK0724	12" Duct Cover (For AK7554BS)
ZRC-7000B*	Recirculating Kit (For AK7500BS, w/ charcoal filters)
ZRC-7036B*	Recirculating Kit (For AK7536BS, w/ charcoal filters)
ZRC-7042B*	Recirculating Kit (For AK7542BS, w/ charcoal filters)
ZOF-C002	Charcoal Filter Replacement (Each)
AK0710	SS Backsplash w/ Shelves (For AK7500BS)
AK0716	SS Backsplash w/ Shelves (For AK7536BS)
AK0712	SS Backsplash w/ Shelves (For AK7542BS)
AK0718	SS Backsplash w/ Shelves (For AK7548BS)
AK0714	SS Backsplash w/ Shelves (For AK7554BS)
ZOB0023	Halogen Bulb (GU10 35W 120V)
ZOB0040	Bloom™ GU10 LED (6W, 3000K)
PBD-1200A**	1200 CFM Internal Blower Kit (10" round duct)
14000005	RF Wireless Remote Control
MUA008A	Make-Up Air Kit (650 CFM)
MUA010A	Make-Up Air Kit (1200 CFM)

* ZRC-70xxB recirculating kits are compatible with 650cfm internal blower only (blower included with hood). ZRC-70xxB includes a 4-inch tall return-air box, so please plan your installation accordingly.

** PBD-1200A is a dual internal blower kit with a single blower and two blower openings. To complete the kit you must remove the blower from the hood and install it into the PBD-1200A kit.



TITAN WALL
ACT™

TITAN 750 CFM Pro-Style Chimney Hood w/ Powerwave Blower & LED Lights		
AK7636AS	S	36" x 24"
AK7642AS	S	42" x 24"
AK7648AS	S	48" x 24"
AK7654AS	S	54" x 24"
AK7660AS	S	60" x 24"
Max. Blower CFM: 750 (included) 8" or 10" round vertical & horizontal ducting LED lights Max. Blower CFM: 1,300 (optional)		
Dual-level lighting Pro baffle filters ACT Max. Blower CFM: 590, 390, 290 Accommodates 9'6" ceiling height 6 speed LCD controls		
Auto delay-off Directional lighting Wireless remote option		

Accessories

PBD-1300A	1,300 CFM Internal Blower Kit (10" round duct)
Z1C-0076	Duct Cover Extension - 36", 42" (For a 10'-12' ceiling)
Z1C-0176	Duct Cover Extension - 48", 54", 60" (For a 10'-12' ceiling)
14000005	RF Wireless Remote Control
MUA008A	Make-Up Air Kit (750 CFM)
MUA010A	Make-Up Air Kit (1,300 CFM)

Finish: (S)-Stainless Steel

Warranty: 3 years non-consumable parts, 1 year labor

WALL

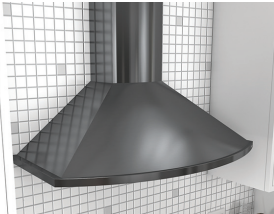
CORE COLLECTION



OMBRA
ACT™

MODEL	FINISH	SIZE W x D
OMBRA 600 CFM Traditional Wall Hood w/ Black Stainless Steel & ACT™		
ZOM-E30ABS	Blk SS	30" x 19-3/4"
ZOM-E36ABS	Blk SS	36" x 19-3/4"
<div> <div>Max. Blower CFM: 600 4 speed capacitive touch controls Halogen lighting</div> <div>ACT Max. Blower CFM: 390, 290 6" round vertical ducting Dual-level lighting</div> <div>Sones: 1-6 Accommodates 9'4" ceiling height 5 minute delay-off</div> </div>		
Accessories		
ZRC-01OM	Recirculating Kit (w/ charcoal filters)	
ZOF-C091	Charcoal Filter Replacement (Each)	
Z1C-01OMBS	Duct Cover Extension, (For up to a 12' ceiling)	
ZOB0040	Bloom™ GU10 LED (6W, 3000K)	
MUA006A	Make-Up Air Kit	
ZOF-B002	Hybrid Baffle Filter Kit (2 filters)	

CORE COLLECTION



SAVONA
ACT™

SAVONA 685 CFM Classic Curved Body Wall Hood w/ Airflow Control Technology (ACT™)		
ZSA-E30DB	B	30" x 19-1/2"
ZSA-E30DW	W	30" x 19-1/2"
ZSA-E30DS	S	30" x 19-1/2"
ZSA-E30DBS	Blk SS	30" x 19-1/2"
ZSA-M90DB	B	35-7/16" x 19-1/2"
ZSA-M90DW	W	35-7/16" x 19-1/2"
ZSA-M90DS	S	35-7/16" x 19-1/2"
ZSA-M90DBS	Blk SS	35-7/16" x 19-1/2"
<div> <div>Max. Blower CFM: 685 5 speed ICON Touch® controls BriteStrip™ LED Lighting</div> <div>ACT Max. Blower CFM: 390, 290 6" round vertical ducting Dual-level lighting</div> <div>Sones: 1-6 Accommodates 9'7" ceiling height 5 minute delay-off</div> </div>		
Accessories		
ZRC-00SV	Recirculating Kit (w/ charcoal filters)	
ZOF-C002	Charcoal Filter Replacement (Each)	
Z1C-01SAB	Duct Cover Extension, B (For up to a 12' ceiling)	
Z1C-01SAW	Duct Cover Extension, W (For up to a 12' ceiling)	
Z1C-01SA	Duct Cover Extension, S (For up to a 12' ceiling)	
Z1C-01SABS	Duct Cover Extension, Blk SS (For up to a 12' ceiling)	
MUA008A	Make-Up Air Kit	
ZOF-B001	Baffle Filter Kit (2 filters)	

DID YOU KNOW Zephyr has a comprehensive hood height calculator online to determine if our chimney range hoods will fit in your kitchen. zephyronline.com/customer_support/hood_height

Finish: (B)-Black (W)-White (S)-Stainless Steel (Blk SS)-Black Stainless Steel
Warranty: 3 years non-consumable parts, 1 year labor

WALL

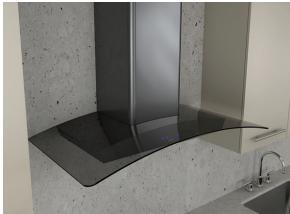
CORE COLLECTION



ANZIO WALL
ACT™

MODEL	FINISH	SIZE W x D
ANZIO 600 CFM Low-Profile Modern Wall Hood w/ Airflow Control Technology (ACT™)		
ZAN-E24CS	S	24" x 22"
ZAN-E30CS	S	30" x 22"
ZAN-E30CBS	Blk SS	30" x 22"
ZAN-M90CS	S	35-7/16" x 22"
ZAN-M90CBS	Blk SS	35-7/16" x 22"
Max. Blower CFM: 600 5 speed ICON Touch® controls BriteStrip™ LED Lighting		
ACT Max. Blower CFM: 390, 290 6" round vertical ducting Dual-level lighting		
Sones: 1-6 Accommodates 9'10" ceiling height 5 minute delay-off		
Accessories		
ZRC-01AN	Recirculating Kit (w/ charcoal filters)	
ZOF-C091	Charcoal Filter Replacement (Each)	
Z1C-00AN	Duct Cover Extension (For up to a 12' ceiling)	
Z1C-00ANBS	Duct Cover Extension, Blk SS (For up to a 12' ceiling)	
RED006	Airflow Reducer, reduces 25 CFM	
MUA006A	Make-Up Air Kit	
ZOF-B002	Hybrid Baffle Filter Kit (2 filters)	

CORE COLLECTION



RAVENNA
ACT™

RAVENNA 600 CFM Curved Glass Wall Hood w/ Airflow Control Technology (ACT™)		
ZRV-E30BGC	S w/Clear Glass	30" x 19-3/4"
ZRV-E30BGG	S w/Smoke Gray Glass	30" x 19-3/4"
ZRV-E30BBSGG	Blk SS w/Smoke Gray Glass	30" x 19-3/4"
ZRV-M90BGC	S w/Clear Glass	35-3/16" x 19-3/4"
ZRV-M90BGG	S w/Smoke Gray Glass	35-3/16" x 19-3/4"
ZRV-M90BBSGG	Blk SS w/Smoke Gray Glass	35-3/16" x 19-3/4"
Max. Blower CFM: 600 5 speed ICON Touch® controls BriteStrip™ LED Lighting		
ACT Max. Blower CFM: 390, 290 6" round vertical ducting Dual-level lighting		
Sones: 1-6 Accommodates 9'4" ceiling height 5 minute delay-off		
Accessories		
ZRC-00RV	Recirculating Kit (w/ charcoal filters)	
ZOF-C002	Charcoal Filter Replacement (Each)	
Z1C-00RV	Duct Cover Extension (For up to a 12' ceiling)	
Z1C-00RVBS	Duct Cover Extension, Blk SS (For up to a 12' ceiling)	
RED006	Airflow Reducer, reduces 25 CFM	
MUA006A	Make-Up Air Kit	

Finish: (S)-Stainless Steel (Blk SS)-Black Stainless Steel
 Warranty: 3 years non-consumable parts, 1 year labor

WALL

CORE COLLECTION



ROMA WALL
ACT™

MODEL FINISH SIZE W x D

ROMA 600 CFM Contemporary Hood w/ Airflow Control Technology (ACT™)

ZRO-E30DS	S	30" x 22"
ZRO-M90DS	S	35-7/16" x 22"

Max. Blower CFM: 600	ACT Max. Blower CFM: 390, 290	Sones: 1-6
5 speed ICON Touch® controls	6" round vertical ducting	Accommodates 9'9" ceiling height
BriteStrip LED™ Lighting	Dual-level lighting	5 minute delay-off

Accessories

ZRC-01RO	Recirculating Kit (2 charcoal filters)
ZOF-C002	Charcoal Filter Replacement (Each)
Z1C-00RO	Duct Cover Extension (For up to a 12' ceiling)
RED006	Airflow Reducer, reduces 25 CFM
MUA006A	Make-Up Air Kit

DID YOU KNOW The Roma now has a new lower profile body at 3" in height.

CORE COLLECTION



ROMA GROOVE
ACT™

ROMA GROOVE WALL 600 CFM BlueTooth® Hood w/ Airflow Control Technology (ACT)

ZRG-E30AS	S	30" x 22"
ZRG-M90AS	S	35 1/2" x 22"

Max. Blower CFM: 600	6" round vertical ducting	Accommodates 9'5" ceiling height
5 speed ICON Touch® controls	Dual-level lighting	Auto delay-off
BriteStrip LED™ Lighting	Bluetooth® Stereo Speakers	
ACT Max. Blower CFM: 390, 290	Sones: 1-6	

Accessories

ZRC-00RG	Recirculating Kit
Z1C-00RO	Duct Cover Extension (For up to a 12' ceiling)
MUA006A	Make-Up Air Kit

CORE COLLECTION



SIENA ES
ACT™

SIENA ES 400 CFM ENERGY STAR Traditional Wall Hood w/ Hybrid Baffle Filters & ACT™

ZSI-E30AS-ES	S	30" x 22"
ZSI-E36AS-ES	S	36" x 22"

Max. Blower CFM: 400	8" round vertical ducting	5 minute delay-off
3 speed ICON Touch® controls	Hybrid baffle filters	ENERGY STAR certified
13W fluorescent lights	Sones: 1.4-6	
ACT Max. Blower CFM: 290	Accommodates 9'4" ceiling height	

Accessories

Z1C-00SI	Duct Cover Extension, (For up to a 12' ceiling)
Z0B0036	Fluorescent Bulb (GU24 13W 120V)

CORE COLLECTION



SIENA PRO WALL
ACT™

SIENA PRO 1200 CFM Pro Wall Hood w/ Hybrid Baffle Filters & ACT™

ZSP-E42BS	S	42" x 22"
ZSP-E48BS	S	48" x 22"

Max. Blower CFM: 1200	10" round vertical ducting	Hybrid baffle filters
5 speed ICON Touch® controls	Dual-level lighting	5 minute delay-off
BriteStrip™ LED Lighting	Sones: 3.5-9	
ACT Max. Blower CFM: 590, 390	Accommodates 9'4" ceiling height	

Accessories

Z1C-00SP	Duct Cover Extension (For up to a 12' ceiling)
MUA010A	Make-Up Air Kit

Finish: (S)-Stainless Steel

Warranty: 3 years non-consumable parts, 1 year labor

WALL

CORE COLLECTION



LUCÉ WALL
ACT™

MODEL FINISH SIZE W x D

LUCÉ 600 CFM Wall Hood w/ LED Accent Lighting & Airflow Control Technology (ACT™)

ZLU-E30BS	S	30" x 22"
ZLU-M90BS	S	35-7/16" x 22"

Max. Blower CFM: 600	6" round vertical ducting	3-color LED accent light
5 speed ICON Touch® controls	Dual-level lighting	5 minute delay-off
BriteStrip™ LED Lighting	Sones: 1-6	
ACT Max. Blower CFM: 390, 290	Accommodates 10' ceiling height	

Accessories

ZRC-00LU	Recirculating Kit (w/ charcoal filter)
ZOF-C092	Charcoal Filter Replacement (Each)
Z1C-00LU	Duct Cover Extension (For up to a 12' ceiling)
RED006	Airflow Reducer, reduces 25 CFM
MUA006A	Make-Up Air Kit

DID YOU KNOW Lucé Wall has a "demo mode" that cycles through each of the three LED accent light colors every 10 seconds. To enable demo mode, hold down the "accent light" button on the bottom of the hood for 3 seconds.

CORE COLLECTION



VENEZIA
DCBL™ ACT™

VENEZIA 715 CFM Wall Hood w/ DCBL Suppression System®, ACT™ & Baffle Filters

ZVE-E30CS	S	30" x 24"
ZVE-E36CS	S	36" x 24"
ZVE-E42CS	S	42" x 24"

Max. Blower CFM: 715	8" round vertical ducting	5 minute delay-off
6 speed LCD controls	Dual-level lighting	Baffle filters
Bloom™ HD LED lights	Sones: 0.8-5.8	CleanAir function
ACT Max. Blower CFM: 590, 390, 290	Accommodates 9'6" ceiling height	Directional lighting

Accessories

ZRC-02VE	Recirculating Kit (w/ charcoal filters)
ZOF-C091	Charcoal Filter Replacement (Each)
Z1C-01VE	Duct Cover Extension (For up to a 12' ceiling)
RC-0001	RF Wireless Remote Control Kit
MUA008A	Make-Up Air Kit

CORE COLLECTION



MODENA WALL
DCBL™ ACT™

MODENA 715 CFM Thin Floating Glass Wall Hood w/ DCBL Suppression System® & ACT™

ZMO-E30AS	S w/Glass	30" x 22-1/8"
ZMO-M90AS	S w/Glass	35-7/16" x 22-1/8"

Max. Blower CFM: 715	8" round vertical ducting	5 minute delay-off
6 speed LCD controls	Dual-level lighting	CleanAir function
Bloom™ HD LED lights	Sones: 0.8-5.8	
ACT Max. Blower CFM: 590, 390, 290	Accommodates 10' ceiling height	

Accessories

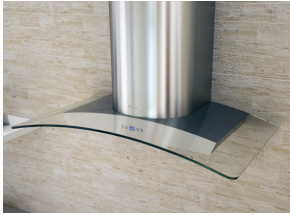
ZRC-00MO	Recirculating Kit (w/ charcoal filter)
ZOF-C002	Charcoal Filter Replacement (Each)
Z1C-00MO	Duct Cover Extension (For up to a 12' ceiling)
RC-0001	RF Wireless Remote Control Kit
MUA008A	Make-Up Air Kit

Finish: (S)-Stainless Steel

Warranty: 3 years non-consumable parts, 1 year labor

WALL

CORE COLLECTION



MILANO WALL

DCBL[®] ACT[™]

MODEL FINISH SIZE W x D

MILANO 715 CFM Curved Canopy Wall Hood w/ DCBL Suppression System[®] & ACT[™]

ZMI-M90BG S w/ Glass 35-3/16" x 20-1/2"
ZMI-M90BS S 35-3/16" x 20-1/2"

Max. Blower CFM: 715 8" round vertical ducting 5 minute delay-off
6 speed LCD controls Dual-level lighting CleanAir function
Bloom[™] HD LED lights Sones: 0.8-5.8
ACT Max. Blower CFM: 590, 390, 290 Accommodates 10' ceiling height

Accessories

ZRC-00MI Recirculating Kit (w/ charcoal filters)
ZOF-C002 Charcoal Filter Replacement (Each)
Z1C-01MI Duct Cover Extension (For up to a 12' ceiling)
RC-0001 RF Wireless Remote Control Kit
MUA008A Make-Up Air Kit

CORE COLLECTION



VERONA WALL

DCBL[®] ACT[™]

VERONA 715 CFM LED Illuminated Glass Wall Hood w/ DCBL Suppression System[®] & ACT[™]

ZVO-E30AG S w/Glass 30" x 22"
ZVO-M90AG S w/Glass 35-7/16" x 22"

Max. Blower CFM: 715 8" round vertical ducting 5 minute delay-off
6 speed LCD controls Dual-level lighting CleanAir function
Bloom[™] HD LED lights Sones: 0.8-5.8 3 color LED illuminated glass
ACT Max. Blower CFM: 590, 390, 290 Accommodates 10' ceiling height

Accessories

ZRC-00VO Recirculating Kit (w/ charcoal filters)
ZOF-C002 Charcoal Filter Replacement (Each)
Z1C-00VO Duct Cover Extension (For up to a 12' ceiling)
RC-0001 RF Wireless Remote Control Kit
MUA008A Make-Up Air Kit

Verona glass illuminates in cloud white, deep blue and amber.

DID YOU KNOW Zephyr Bloom[™] HD LED lights are covered under the same 3 year warranty as all internal parts. Zephyr is the first and only range hood manufacturer to warranty lights.

Finish: (G)-Glass (S)-Stainless Steel

Warranty: 3 years non-consumable parts, 1 year labor

WALL

DESIGNER COLLECTION



DUO WALL

MODEL	FINISH	SIZE W x D
DUO Designer Wall Hood w/ LED Lighting - BODY ONLY*		
ADU-M90BSX	S	35-3/8" x 19-5/8"
Max. Blower CFM: 290 - 1,000 (not included)		Sones: 1.4-6 (depends on blower)
6" or 8" round vertical ducting		Decorative mesh filters
8.5W LED light strip		Tri-level lighting
		3 speed capacitive touch controls
Accommodates 10'1" ceiling height		
Wireless remote control		
CleanAir function		
Accessories and Blowers		
ZRC-01LA	Recirculating Kit (w/ charcoal filter)	
ZOF-01AC	Charcoal Filter Replacement (Each)	
Z1C-00LA	Duct Cover Extension (For up to 12' ceiling)	
CBI-290A	290 CFM Internal Blower (6" round duct)	
CBI-600A	600 CFM Internal Blower (6" round duct)	
PBN-1000A	1,000 CFM In-line Blower (8" round duct**)	
CBE-1000	1,000 CFM External Blower (8" round duct**)	
RED006	Airflow Reducer, reduces 25 CFM (For CBI-600)	
MUA006A	Make-Up Air Kit (600 CFM)	
MUA008A	Make-Up Air Kit (1,000 CFM)	

* Requires purchase of Zephyr internal, external or in-line blower, sold separately.

** 10" round duct connects to external or in-line blower. Must transition from 10" to 8" before duct passes through ceiling. 10" to 8" adapter included with in-line and external blowers

DESIGNER COLLECTION



LAYERS WALL

LAYERS Designer Wall Hood by Robert Brunner w/ LED Lighting - BODY ONLY*		
ALA-M90BBX	S w/ B Glass	35-3/8" x 22"
ALA-M90BWX	S w/ W Glass	35-3/8" x 22"
ALA-E42BBX	S w/ B Glass	42" x 22"
ALA-E42BWX	S w/ W Glass	42" x 22"
Max. Blower CFM: 290 - 1,000 (not included)		Sones: 1.4-6 (depends on blower)
6" or 8" round vertical ducting		Decorative mesh filters
6W LED light strips		Tri-level lighting
		3 speed capacitive touch controls
Accommodates 10'2" ceiling height		
Wireless remote control		
CleanAir function		
Accessories and Blowers		
ZRC-01LA	Recirculating Kit (w/ charcoal filter)	
ZOF-01AC	Charcoal Filter Replacement (Each)	
Z1C-00LA	Duct Cover Extension (For up to 12' ceiling)	
CBI-290A	290 CFM Internal Blower (6" round duct)	
CBI-600A	600 CFM Internal Blower (6" round duct)	
PBN-1000A	1,000 CFM In-line Blower (8" round duct**)	
CBE-1000	1,000 CFM External Blower (8" round duct**)	
RED006	Airflow Reducer, reduces 25 CFM (for CBI-600)	
MUA006A	Make-Up Air Kit (600 CFM)	
MUA008A	Make-Up Air Kit (1,000 CFM)	

* Requires purchase of Zephyr internal, external or in-line blower, sold separately.

** 10" round duct connects to external or in-line blower. Must transition from 10" to 8" before duct passes through ceiling. 10" to 8" adapter included with in-line and external blowers

Finish: (S)-Stainless Steel (B Glass)-Black Glass (W Glass)-White Glass

Warranty: 1 year non-consumable parts, 1 year labor

WALL

DESIGNER COLLECTION



OKEANITO

MODEL FINISH SIZE W x D

OKEANITO Cheng Design Wall Hood w/ LED Lighting - BODY ONLY*

COK-E36BSX	S	36" x 22-3/4"
COK-E42BSX	S	42" x 22-3/4"
COK-E48BSX	S	48" x 22-3/4"

Max. Blower CFM: 290 - 1,000 (not included)	15 minute delay-off	Accommodates 10'1" ceiling height
6" or 8" round vertical ducting	Dual-level lighting	CleanAir function
Bloom™ HD LED lights	3 speed electronic controls	Wireless remote option
Sones: 1.4-6 (depends on blower)	Pro baffle filters	
	40W ambient lights	

* Requires purchase of Zephyr blower, sold separately.

Accessories and Blowers

Z1C-000K	Duct Cover Extension (For up to a 12' ceiling)
Z0B0035	Ambient Incandescent Bulb (E26 T10 40W 120V)
CBI-290A	290 CFM Internal Blower (6" round duct)
CBI-600A	600 CFM Internal Blower (6" round duct)
PBN-1000A	1,000 CFM In-Line Blower (*10" to 8" round duct)
CBE-1000	1,000 CFM External Blower (*10" or 8" round duct)
14000005	RF Wireless Remote Control
RED006	Airflow Reducer, reduces 25 CFM (for CBI-600)
MUA006A	Make-Up Air Kit (600 CFM)
MUA008A	Make-Up Air Kit (1,000 CFM)

* 10" round duct connects to external/in-line blower. Must transition from 10" to 8" before duct passes through ceiling. 10" to 8" adapter included with external/in-line blower.

DESIGNER COLLECTION



LIMITED EDITION OKEANITO

OKEANITO LE Cheng Design Wall Hood w/ LED Lighting - BODY ONLY*

COK-E36BRGX	Rose Gold w/ S	36" x 22-3/4"
COK-E36BBMX	Black Mirror w/ S	36" x 22-3/4"
COK-E42BRGX	Rose Gold w/ S	42" x 22-3/4"
COK-E42BBMX	Black Mirror w/ S	42" x 22-3/4"
COK-E48BRGX	Rose Gold w/ S	48" x 22-3/4"
COK-E48BBMX	Black Mirror w/ S	48" x 22-3/4"

Max. Blower CFM: 290 - 1,000 (not included)	15 minute delay-off	Accommodates 10'1" ceiling height
6" or 8" round vertical ducting	Dual-level lighting	CleanAir function
Bloom™ HD LED lights	3 speed electronic controls	Wireless remote option
Sones: 1.4-6 (depends on blower)	Pro baffle filters	
	40W ambient lights	

* Requires purchase of Zephyr blower, sold separately.

Accessories

Z0B0035	Ambient Incandescent Bulb (E26 T10 40W 120V)
CBI-290A	290 CFM Internal Blower (6" round duct)
CBI-600A	600 CFM Internal Blower (6" round duct)
PBN-1000A	1,000 CFM In-Line Blower (*10" to 8" round duct)
CBE-1000	1,000 CFM External Blower (*10" or 8" round duct)
14000005	RF Wireless Remote Control
RED006	Airflow Reducer, reduces 25 CFM (for CBI-600)
MUA006A	Make-Up Air Kit (600 CFM)
MUA008A	Make-Up Air Kit (1,000 CFM)

* 10" round duct connects to external/in-line blower. Must transition from 10" to 8" before duct passes through ceiling. 10" to 8" adapter included with external/in-line blower.

Finish: (S)-Stainless Steel (RG)-Rose Gold Stainless Steel (BM)-Black Mirror Stainless Steel

Warranty: 3 years non-consumable parts, 1 year labor

WALL

DESIGNER COLLECTION



INCLINE

MODEL	FINISH	SIZE W x D
INCLINE Designer Wall Hood w/ Perimeter Aspiration and LED Lighting - BODY ONLY*		
AIN-M80ASX	S	31-1/2" x 16-5/16"
AIN-M80AWX	W w/ S	31-1/2" x 16-5/16"
Max. Blower CFM: 290 - 1,000 (not included)		Sones: 1.4-6 (depends on blower)
6" or 8" round vertical ducting		3 speed levels
8.5W LED light strip		Capacitive Touch
		6" or 8" round horizontal ducting
		Tri-level lighting
		Wireless remote control
		Dual filtration
		CleanAir function
Accessories and Blowers		
ZRC-00IN	Recirculating Kit (w/ charcoal filters)	
Z0F-02AC	Charcoal Filter Replacement (2pk)	
Z1C-00IN	Duct Cover (For up to 10' ceiling)	
CBI-290A	290 CFM Internal Blower (6" round duct)	
CBI-600A	600 CFM Internal Blower (6" round duct)	
PBN-1000A	1,000 CFM In-line Blower (8" round duct**)	
CBE-1000	1,000 CFM External Blower (8" round duct**)	
RED006	Airflow Reducer, reduces 25 CFM (for CBI-600)	
MUA006A	Make-Up Air Kit (600 CFM)	
MUA008A	Make-Up Air Kit (1,000 CFM)	

* Requires purchase of Zephyr internal, external or in-line blower, sold separately.

** 10" round duct connects to external or in-line blower. Must transition from 10" to 8" before duct passes through ceiling. 10" to 8" adapter included with in-line and external blowers

DESIGNER COLLECTION



WAVE

WAVE	Designer Wall Hood w/ Dual Capture Zones and LED Lighting- BODY ONLY*	
AWA-M90ABX	B Glass	35-7/16" x 16-1/4"
AWA-M90AWX	W Glass	35-7/16" x 16-1/4"
Max. Blower CFM: 290 - 1,000 (not included)		Sones: 1.4-6 (depends on blower)
6" or 8" round vertical ducting		3 speed levels
8.5W LED light strip		Capacitive Touch
		6" or 8" round horizontal ducting
		Tri-level lighting
		Wireless remote control
		Dual capture zones
		CleanAir function
Accessories and Blowers		
ZRC-00WA	Recirculating Kit (w/ charcoal filter)	
Z0F-01AC	Charcoal Filter Replacement (Each)	
Z1C-00IN	Duct Cover (For up to 10' ceiling)	
CBI-290A	290 CFM Internal Blower (6" round duct)	
CBI-600A	600 CFM Internal Blower (6" round duct)	
PBN-1000A	1,000 CFM In-line Blower (8" round duct**)	
CBE-1000	1,000 CFM External Blower (8" round duct**)	
RED006	Airflow Reducer, reduces 25 CFM (for CBI-600)	
MUA006A	Make-Up Air Kit (600 CFM)	
MUA008A	Make-Up Air Kit (1,000 CFM)	

* Requires purchase of Zephyr internal, external or in-line blower, sold separately.

** 10" round duct connects to external or in-line blower. Must transition from 10" to 8" before duct passes through ceiling. 10" to 8" adapter included with in-line and external blowers

DID YOU KNOW Incline and Wave can be ducted vertically or horizontally and also share the same optional duct cover.

Finish: (S)-Stainless Steel (W)-Powder Coated White (B Glass)-Black Glass (W Glass)-White Glass

Warranty: 1 years non-consumable parts, 1 year labor

WALL



LIFT

MODEL	FINISH	SIZE W x D
LIFT Downdraft with 18" Chimney Rise – BODY ONLY*		
DLI-E30ASX	S	30"
DLI-E36ASX	S	36"
<div> <div> Max. Blower CFM 200 – 1,000 (not included) 8"(DBI), 10"(PBN/CBE) Front Ducting 1-7/8" x 19" to 8"/10" round Left/ </div> <div> Right/Rear/Bottom Ducting Dual-Level BriteStrip™ LED Lighting Aluminum Mesh Filter x2 Tri-Capture Zones </div> <div> 3 speed capacitive touch controls Optional Recirculating Kit </div> </div>		
Accessories		
DBI-600A	Internal/In-Line Blower (200- 600 CFM)	
PBN-1000A	In-Line Blower (500-1000 CFM)	
CBE-1000	External Blower (500 – 1000 CFM)	
ZRC-00LF	Recirculating Kit	
DDA-0002	ADA Compliant Remote Up/Down Control	
DDS-0030 / DDS-0036	Gas Cooktop Seal Kit	
DDT-0030 / DDT-0036	Range Trim Kit	
11030132	Electronics Extension Cable - 5'	
DDE-0001	End Cap Trim Extension +1"	
54190053	Front Panel Rough-In Plate, 8" Round	
54190054	Front Panel Rough-In Plate, 10" Round	
AK00070	1-7/8" x 19" to 8" Round Transition	
AK00071	1-7/8" x 19" to 10" Round Transition	
AK00072	1-7/8" x 19" Adapter for AK00080 Duct	
AK00080	1-7/8" x 19" Rectangular Duct, 2'	
MUA006A (600 CFM)	Make-Up Air Kit	
MUA008A (1,000 CFM)	Make-Up Air Kit	

* Requires purchase of Zephyr internal, external or in-line blower, sold separately.

CORE COLLECTION



SORRENTO DOWNDRAFT

SORRENTO	500 CFM Downdraft Hood w/ 9-1/2" Rise	
DD1-E30AS	S	30"
DD1-E36AS	S	36"
<div> <div> Max. Blower CFM: 500 3-1/4"x10" three position ducting* </div> <div> HVI certified Sones NA </div> <div> Variable speed controls Decorative mesh filters </div> </div>		
Accessories		
DDA-0001	Wired Remote Up/Down Control	
MUA006A	Universal Make-Up Air Damper	

*Three position ducting includes the left, right, or bottom of blower housing.

Finish: (W)-White (S)-Stainless Steel

Warranty: 2 years non-consumable parts, 1 year labor (DLI, DD1)

ISLAND

CORE COLLECTION



ROMA ISLAND
ACT™

MODEL FINISH SIZE W x D

ROMA IS. 600 CFM Contemporary Island Hood w/ Airflow Control Technology (ACT™)

ZRM-E36DS	S	36" x 27"
ZRM-E42DS	S	42" x 27"

Max. Blower CFM: 600	6" round vertical ducting	5 minute delay-off
5 speed ICON Touch® controls	Dual-level lighting	Quick-lock installation with
BriteStrip™ LED Lighting	Sones: 1-6	magnetic duct covers
ACT Max. Blower CFM: 390, 290	Accommodates 9'1" ceiling height	

Accessories

ZRC-02RM	Recirculating Kit (w/ charcoal filters)
ZOF-C002	Charcoal Filter Replacement (Each)
Z1C-01RM	Duct Cover Extension (For up to a 12' ceiling)
RED006	Airflow Reducer, reduces 25 CFM
MUA006A	Make-Up Air Kit

DID YOU KNOW The Roma now has a new lower profile body at 3" in height.

CORE COLLECTION



ANZIO ISLAND
ACT™

ANZIO IS. 600 CFM Low-Profile Modern Island Hood w/ Airflow Control Technology (ACT™)

ZAZ-M90CS	S	35-7/16" x 25-9/16"
ZAZ-E42CS	S	42" x 25-9/16"

Max. Blower CFM: 600	6" round vertical ducting	5 minute delay-off
5 speed ICON Touch® controls	Dual-level lighting	Quick-lock installation with
BriteStrip™ LED Lighting	Sones: 1-6	magnetic duct covers
ACT Max. Blower CFM: 390, 290	Accommodates 10' ceiling height	

Accessories

ZRC-02AZ	Recirculating Kit
ZOF-C091	Charcoal Filter Replacement (Each)
Z1C-00AZ	Duct Cover Extension (For up to a 12' ceiling)
RED006	Airflow Reducer, reduces 25 CFM
MUA006A	Make-Up Air Kit
ZOF-B002	Hybrid Baffle Filter Kit (2 filters)

CORE COLLECTION



RAVENNA ISLAND
ACT™

RAVENNA IS. 600 CFM Black Stainless Steel Island Hood w/ Smoke Gray Glass Canopy

ZRE-M90ABSGG	Blk SS	35-3/16" x 25-9/16"
ZRE-E42ABSGG	Blk SS	42" x 25-9/16"

Max. Blower CFM: 600	6" round vertical ducting	5 minute delay-off
5 speed ICON Touch® controls	Dual-level lighting	Quick-lock installation with
BriteStrip™ LED Lighting	Sones: 1-6	magnetic duct covers
ACT Max. Blower CFM: 390, 290	Accommodates 9' ceiling height	

Accessories

ZRC-00RE	Recirculating Kit (w/ charcoal filters)
ZOF-C002	Charcoal Filter Replacement (Each)
Z1C-00REBS	Duct Cover Extension (For up to a 12' ceiling)
RED006	Airflow Reducer, reduces 25 CFM
MUA006A	Make-Up Air Kit

DID YOU KNOW Zephyr island hoods with Quick-lock installation are the easiest island hoods to install in the market.

Finish: (S)-Stainless Steel (Blk SS)-Black Stainless Steel w/ Smoke Gray Glass

Warranty: 3 years non-consumable parts, 1 year labor

ISLAND

CORE COLLECTION



LUCÉ ISLAND
ACT™

MODEL	FINISH	SIZE W x D
LUCÉ IS. 600 CFM Island Hood w/ LED Accent Lighting & Airflow Control Technology (ACT™)		
ZLC-M90BS	S	35-7/16" x 25-9/16"
ZLC-E42BS	S	42" x 25-9/16"
Max. Blower CFM: 600 5 speed ICON Touch® controls BriteStrip™ LED Lighting ACT Max. Blower CFM: 390, 290		
6" round vertical ducting Dual-level lighting Sones: 1-6 Accommodates 9'8" ceiling height		5 minute delay-off Quick-lock installation with magnetic duct covers
Accessories		
ZRC-00LC	Recirculating Kit (w/ charcoal filters)	
ZOF-C092	Charcoal Filter Replacement (Each)	
Z1C-00LC	Duct Cover Extension (For up to a 12' ceiling)	
RED006	Airflow Reducer, reduces 25 CFM	
MUA006A	Make-Up Air Kit	

CORE COLLECTION



MILANO ISLAND
DCBL™ ACT™

MILANO IS. 715 CFM Curved Canopy Island Hood w/ DCBL Suppression System® & ACT™		
ZML-M90BG	S w/Glass	35-7/16" x 25-9/16"
ZML-M90BS	S	35-7/16" x 25-9/16"
ZML-E42BG	S w/Glass	42" x 25-9/16"
ZML-E42BS	S	42" x 25-9/16"
Max. Blower CFM: 715 6 speed LCD controls Bloom™ HD LED lights ACT Max. Blower CFM: 590, 390, 290		
8" round vertical ducting Dual-level lighting Sones: 0.8-5.8 Accommodates 10' ceiling height 5 minute delay-off		CleanAir function Quick-lock installation with magnetic duct covers
Accessories		
ZRC-00ML	Recirculating Kit (w/ charcoal filters)	
ZOF-C002	Charcoal Filter Replacement (Each)	
Z1C-03ML	Duct Cover Extension (For up to a 12' ceiling)	
RC-0001	RF Wireless Remote Control Kit	
MUA008A	Make-Up Air Kit	

CORE COLLECTION



MODENA ISLAND
DCBL™ ACT™

MODENA IS. 715 CFM Thin Profile Island Hood w/ DCBL Suppression System® & ACT™		
ZMD-M90AS	S	35-7/16" x 27-1/2"
ZMD-E42AS	S	42" x 27-1/2"
Max. Blower CFM: 715 6 speed LCD controls Bloom™ HD LED lights ACT Max. Blower CFM: 590, 390, 290		
8" round vertical ducting Dual-level lighting Sones: 0.8-5.8 Accommodates 10' ceiling height		5 minute delay-off CleanAir function Quick-lock installation with magnetic duct covers
Accessories		
ZRC-00MD	Recirculating Kit (w/ charcoal filter)	
ZOF-C002	Charcoal Filter Replacement (Each)	
Z1C-00MD	Duct Cover Extension (For up to a 12' ceiling)	
RC-0001	RF Wireless Remote Control Kit	
MUA008A	Make-Up Air Kit	

Finish: (G)-Glass (S)-Stainless Steel

Warranty: 3 years non-consumable parts, 1 year labor

ISLAND

DESIGNER COLLECTION



DUO ISLAND

MODEL

FINISH

SIZE W x D

DUO ISLAND Designer Island Hood w/ LED Lighting - BODY ONLY*

ADL-M90BSX	S	35-3/8" x 23-5/8"
ADL-E42BSX	S	42" x 23-5/8"

Max. Blower CFM: 290 - 1,000 (not included) 6" or 8" round vertical ducting 8.5W LED light strips	Sones: 1.4-6 (depends on blower) Decorative mesh filters Tri-level lighting 3 speed capacitive touch controls	Wireless remote control Quick-lock installation Accommodates 10'1" ceiling height CleanAir function
---	--	--

Accessories and Blowers

ZRC-01LL	Recirculating Kit (w/ charcoal filters)
ZOF-01AC	Charcoal Filter Replacement (Each)
Z1C-02LL	Duct Cover Extension (For up to 12' ceiling)
CBI-290A	290 CFM Internal Blower (6" round duct)
CBI-600A	600 CFM Internal Blower (6" round duct)
PBN-1000A	1,000 CFM In-line Blower (8" round duct**)
CBE-1000	1,000 CFM External Blower (8" round duct**)
RED006	Airflow Reducer, reduces 25 CFM (for CBI-600)
MUA006A	Make-Up Air Kit (600 CFM)
MUA008A	Make-Up Air Kit (1,000 CFM)

* Requires purchase of Zephyr internal, external or in-line blower, sold separately.

** 10" round duct connects to external or in-line blower. Must transition from 10" to 8" before duct passes through ceiling. 10" to 8" adapter included with in-line and external blowers

CORE COLLECTION



NAPOLI

DCBL[®] ACT[™]

NAPOLI IS. 715 CFM Island Hood w/ DCBL Suppression System®, ACT™ & Baffle Filters

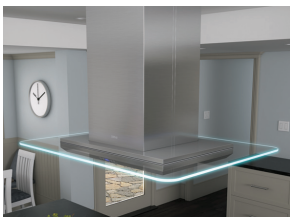
ZNA-M90CS	S	35-7/16" x 25-9/16"
ZNA-E42CS	S	42" x 25-9/16"

Max. Blower CFM: 715 6 speed LCD controls Bloom™ HD LED lights ACT Max. Blower CFM: 590, 390, 290 8" round vertical ducting	Dual-level lighting Sones: 0.8-5.8 Accommodates 10' ceiling height 5 minute delay-off Baffle filters	CleanAir function Quick-lock installation with magnetic duct covers
---	--	--

Accessories

ZRC-02NA	Recirculating Kit (w/ charcoal filters)
ZOF-C091	Charcoal Filter Replacement (Each)
Z1C-02NA	Duct Cover Extension (For up to a 12' ceiling)
RC-0001	RF Wireless Remote Control Kit
MUA008A	Make-Up Air Kit

CORE COLLECTION



VERONA ISLAND

DCBL[®] ACT[™]

VERONA IS. 715 CFM LED Illuminated Glass Island Hood w/ DCBL Suppression System® & ACT™

ZVN-M90AG	S w/Glass	35-7/16" x 27-7/16"
ZVN-E42AG	S w/Glass	42" x 27-7/16"

Max. Blower CFM: 715 6 speed LCD controls Bloom™ HD LED lights ACT Max. Blower CFM: 590, 390, 290 8" round vertical ducting	Dual-level lighting Sones: 0.8-5.8 function Accommodates 10' ceiling height 5 minute delay-off CleanAir	3 color LED illuminated glass Quick-lock installation with magnetic duct covers
---	---	--

Accessories

ZRC-00VN	Recirculating Kit (w/ charcoal filters)
ZOF-C002	Charcoal Filter Replacement (Each)
Z1C-00VN	Duct Cover Extension (For up to a 12' ceiling)
RC-0001	RF Wireless Remote Control Kit
MUA008A	Make-Up Air Kit

Verona Island glass illuminates in cloud white, deep blue and amber.

Finish: (G)-Glass (S)-Stainless Steel

Warranty: 1 year non-consumable parts, 1 year labor (ADL)

3 years non-consumable parts, 1 year labor (ZNA, ZVN)

ISLAND

CORE COLLECTION



SIENA PRO ISLAND

ACT™

MODEL	FINISH	SIZE W x D
SIENA PRO IS. 1200 CFM Traditional Pro Island Hood w/ Hybrid Baffle Filters & ACT™		
ZSL-E42BS	S	42" x 28"
ZSL-E48BS	S	48" x 28"
Max. Blower CFM: 1200 5 speed ICON Touch® controls BriteStrip™ LED Lighting ACT Max. Blower CFM: 590, 390		
10" round vertical ducting Dual-level lighting Sones: 3.5-9 Accommodates 9'10" ceiling height		
Hybrid baffle filters 5 minute delay-off Quick-lock installation with magnetic duct covers		
Accessories		
Z1C-01SL	Duct Cover Extension (For up to a 12' ceiling)	
MUA010A	Make-Up Air Kit	

DESIGNER COLLECTION



LAYERS ISLAND

LAYERS ISLAND		Designer Island Hood by Robert Brunner w/ LED Lighting- BODY ONLY*	
ALL-M90BBX	S w/ Black Glass	35-3/8" x 26"	
ALL-M90BWX	S w/ White Glass	35-3/8" x 26"	
ALL-E42BBX	S w/ Black Glass	42" x 26"	
ALL-E42BWX	S w/ White Glass	42" x 26"	
Max. Blower CFM: 290 - 1,000 (not included) 6" or 8" round vertical ducting 6W LED light strips		Sones: 1.4-6 (depends on blower) 3 speed capacitive touch controls Decorative mesh filters Tri-level lighting	Wireless remote control Quick-lock installation Accommodates 10'2" ceiling height CleanAir function
Accessories and Blowers			
ZRC-01LL	Recirculating Kit (w/ charcoal filters)		
Z0F-01AC	Charcoal Filter Replacement (Each)		
Z1C-02LL	Duct Cover Extension (For up to 12' ceiling)		
CBI-290A	290 CFM Internal Blower (6" round duct)		
CBI-600A	600 CFM Internal Blower (6" round duct)		
PBN-1000A	1,000 CFM In-line Blower (8" round duct**)		
CBE-1000	1,000 CFM External Blower (8" round duct**)		
RED006	Airflow Reducer, reduces 25 CFM (for CBI-600)		
MUA006A	Make-Up Air Kit (600 CFM)		
MUA008A	Make-Up Air Kit (1,000 CFM)		

* Requires purchase of Zephyr internal, external or in-line blower, sold separately.

** 10" round duct connects to external or in-line blower. Must transition from 10" to 8" before duct passes through ceiling. 10" to 8" adapter included with in-line and external blowers

Finish: (S)-Stainless Steel (B Glass)-Black Glass (W Glass)-White Glass

Warranty: 3 years non-consumable parts, 1 year labor (ZSL)

1 year non-consumable parts, 1 year labor (ALL)

ISLAND / CEILING

DESIGNER COLLECTION



TRAPEZE

MODEL	FINISH	SIZE W x D
TRAPEZE Cheng Design Island Hood - BODY ONLY*		
CTP-E48BSX	S	48" x 26-5/8"
CTP-E54BSX	S	54" x 26-5/8"
CTP-E60BSX	S	60" x 26-5/8"
<div> <div>Max. Blower CFM: 290 - 1,000 (not included)</div> <div>6" or 8" round vertical ducting</div> <div>Bloom™ HD LED lights</div> </div> <div> <div>Sones: 1.4-6 (depends on blower)</div> <div>15 min. delay off</div> <div>Dual-level lighting</div> <div>3 speed electronic controls</div> </div> <div> <div>Pro baffle filters</div> <div>Wireless remote option</div> <div>Accommodates 10'4" ceiling height</div> </div>		

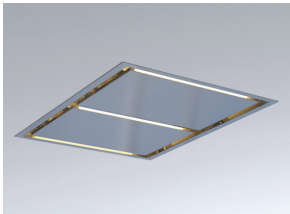
* Requires purchase of Zephyr blower, sold separately.

Accessories and Blowers

Z1C-00TP	Duct Cover Extension (For up to a 12' ceiling)
CBI-290A	290 CFM Internal Blower (6" round duct)
CBI-600A	600 CFM Internal Blower (6" round duct)
PBN-1000A	1,000 CFM In-Line Blower (*10" to 8" round duct)
CBE-1000	1,000 CFM External Blower (*10" or 8" round duct)
14000005	RF Wireless Remote Control
RED006	Airflow Reducer, reduces 25 CFM (for CBI-600)
MUA006A	Make-Up Air Kit (600 CFM)
MUA008A	Make-Up Air Kit (1,000 CFM)

* 10" round duct connects to external/in-line blower. Must transition from 10" to 8" before duct passes through ceiling. 10" to 8" adapter included with external/in-line blower.

DESIGNER COLLECTION



LUX

LUX Designer In-Ceiling Hood w/ Perimeter Aspiration and LED Lighting - BODY ONLY		
ALU-E43ASX	S	43-3/8" x 27-1/2"
ALU-E43AWX	W	43-3/8" x 27-1/2"
ALU-E63ASX	S	63-3/8" x 27-1/2"
ALU-E63AWX	W	63-3/8" x 27-1/2"
<div> <div>Max. Blower CFM: 290 - 1,100 (not included)</div> <div>Perimeter aspiration</div> <div>8.5W LED light strips</div> </div> <div> <div>Sones: 1.4-8 (depends on blower)</div> <div>6" or 10" round horizontal ducting</div> <div>Tri-level lighting</div> <div>3 speed capacitive touch controls</div> </div> <div> <div>Wireless remote control</div> <div>CleanAir function</div> </div>		

Accessories and Blowers

ZRC-00LX*	Recirculating Kit (w/ charcoal filters)
ZOF-01AC	Charcoal Filter Replacement (Each)
CBI-290A	290 CFM Internal Blower (6" round duct)
CBI-600A	600 CFM Internal Blower (6" round duct)
PBI-1100A	1,100 CFM Internal Blower (10" round duct)
PBN-1000A	1,000 CFM In-line Blower (10" round duct)
CBE-1000	1,000 CFM External Blower (10" round duct)
RED006	Airflow Reducer, reduces 25 CFM (for CBI-600)
MUA006A	Make-Up Air Kit (600 CFM)
MUA008A	Make-Up Air Kit (1,000 CFM)
MUA010A	Make-Up Air Kit (1,100 CFM)

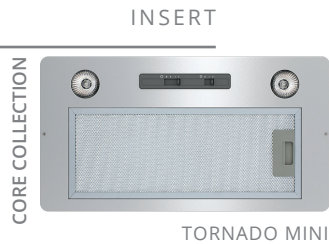
* ZRC-00LX recirculating kit is compatible with CBI-290A and CBI-600A internal blowers only.

DID YOU KNOW Lux uses perimeter aspiration to improve airflow by increasing air velocity around the edges of the stainless steel panels.

Finish: (S)-Stainless Steel (W)-Powder Coated White

Warranty: 3 years non-consumable parts, 1 year labor (CTP)

1 year non-consumable parts, 1 year labor (ALU)



MODEL	FINISH	SIZE W x D
TORNADO MINI 290 CFM Power Pack w/ Recirculating Option		
AK8400AS	S	20-9/16" x 11"
Max. Blower CFM: 290 6" round vertical ducting 35W halogen lights		Sones: 1.3-3.2 Insert height 9-11/16" Dual-level lighting
		3 speed slide controls Stainless steel liner option
Accessories		
ZRC-8400A	Recirculating Kit (w/ charcoal filters)	
ZOF-C084	Charcoal Filter Replacement (Each)	
AK0840AS	17-1/2" - 20-1/2" Depth SS Liner (For 30" hood)	
AK0846AS	17-1/2" - 20-1/2" Depth SS Liner (For 36" hood)	
ZOB0023	Halogen Bulb (GU10 35W 120V)	
ZOB0040	Bloom™ GU10 LED (6W, 3000K)	



TWISTER 400 CFM Power Pack w/ Recirculating Option		
AK8000BS	S	27-9/16" x 11-13/16"
Max. Blower CFM: 400 6" round vertical ducting 35W halogen lights		Sones: 2-5 Insert height 10-1/4" Dual-level lighting
		3 speed slide controls Stainless steel liner option
Accessories		
ZRC-0100	Recirculating Kit (w/ charcoal filters)	
ZOF-C002	Charcoal Filter Replacement (Each)	
AK0800AS	17-1/2" - 20-1/2" Depth SS Liner (For 30" hood)	
AK0836AS	17-1/2" - 20-1/2" Depth SS Liner (For 36" hood)	
ZOB0023	Halogen Bulb (GU10 35W 120V)	
ZOB0040	Bloom™ GU10 LED (6W, 3000K)	



TWISTER ES 290 CFM ENERGY STAR Power Pack		
AK8000AS-ES	S	27-9/16" x 11-13/16"
Max. Blower CFM: 290 6" round vertical ducting 13W fluorescent lights		Sones: 1.6-3.8 Insert height 10-1/4" ENERGY STAR certified
		3 speed slide controls Stainless steel liner option
Accessories		
AK0800AS	17-1/2" - 20-1/2" Depth SS Liner (For 30" hood)	
AK0836AS	17-1/2" - 20-1/2" Depth SS Liner (For 36" hood)	
ZOB0036	Fluorescent Bulb (GU24 13W 120V)	

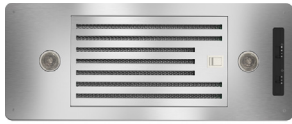
DID YOU KNOW Tornado and Twister liners are adjustable and can accommodate multiple cabinet depths.

Finish: (S)-Stainless Steel

Warranty: 3 years non-consumable parts, 1 year labor (AK80-ES, AK84)
10 years non-consumable parts, 1 year labor (AK80)

INSERT

CORE COLLECTION



TORNADO I

MODEL FINISH SIZE W x D

TORNADO I 600 CFM Power Pack w/ Hybrid Baffle Filter

AK8100AS-BF S 27-9/16" x 11-13/16"

Max. Blower CFM: 600 Sones: 1.4-6 3 speed slide controls
6" round vertical ducting Insert height 10-1/4" Stainless steel liner option
35W halogen lights Dual-level lighting Hybrid Baffle filter

Accessories

AK0800AS 17-1/2" - 20-1/2" Depth SS Liner (For 30" hood)
AK0836AS 17-1/2" - 20-1/2" Depth SS Liner (For 36" hood)
Z0B0023 Halogen Bulb (GU10 35W 120V)
Z0B0040 Bloom™ GU10 LED (6W, 3000K)
RED006 Airflow Reducer, reduces 25 CFM
MUA006A Make-Up Air Kit

PRO COLLECTION



TORNADO II

TORNADO II 1,000 CFM Power Pack w/ Wireless Remote Control

AK8200AS S 29-13/16" x 15-13/16"

Max. Blower CFM: 1,000 Insert height 11-7/16"* Pro baffle filters
8" round vertical ducting Dual-level lighting CleanAir function
35W halogen lights 3 speed electronic controls
Sones: 3.5-8 Wireless remote control

* Height dimension does not include 5" tall, 8" round duct adapter.

Accessories

AK0806AS 20-1/2" - 23-1/2" Depth SS Liner (For 36" hood)
AK0842AS 20-1/2" - 23-1/2" Depth SS Liner (For 42" hood)
Z0B0023 Halogen Bulb (GU10 35W 120V)
Z0B0040 Bloom™ GU10 LED (6W, 3000K)
MUA008A Make-Up Air Kit

PRO COLLECTION



TORNADO III

TORNADO III Power Pack w/ Wireless Remote Control and Multiple Blowers - BODY ONLY*

AK8300ASX S 38-7/16" x 15-13/16"

Max. Blower CFM: 290 - 1,000 (not Sones: 1.4-8 (depends on blower) Wireless remote control
included) Insert height 11-7/16"* Pro baffle filters
6" or 8" round vertical ducting Dual-level lighting CleanAir function
35W halogen lights 3 speed electronic controls

* Requires purchase of Zephyr blower, sold separately.

** Height dimension does not include 5" tall, 8" round duct adapter used with blowers 1,000 CFM or greater.

Accessories and Blowers

AK0848AS 20-1/2" - 23-1/2" Depth SS Liner (For 48" hood)
AK0854AS 20-1/2" - 23-1/2" Depth SS Liner (For 54" hood)
AK0860AS 20-1/2" - 23-1/2" Depth SS Liner (For 60" hood)
Z0B0023 Halogen Bulb (GU10 35W 120V)
Z0B0040 Bloom™ GU10 LED (6W, 3000K)
CBI-290B 290 CFM Internal Blower (6" round duct)
CBI-600B 600 CFM Internal Blower (6" round duct)
PBI-1100A* 1,100 CFM Internal Blower (8" round duct)
PBN-1000A 1,000 CFM In-Line Blower (10" to 8" round duct**)
CBE-1000 1,000 CFM External Blower (10" to 8" round duct**)
RED006 Airflow Reducer, 6" Round, 25 CFM (for CBI-600)
MUA006A Make-Up Air Kit (600 CFM)
MUA008A Make-Up Air Kit (1,000 CFM)

** 10" round duct connects to external/in-line blower. Must transition from 10" to 8" before duct passes through ceiling. 10" to 8" adapter included with external/in-line blower.

Finish: (S)-Stainless Steel

Warranty: 10 years non-consumable parts, 1 year labor

INSERT



VORTEX

MODEL	FINISH	SIZE W x D
VORTEX 390 CFM One-Piece Liner w/ Recirculating Option & Adjustable Depth		
AK9028AS	S	28-3/8" x 17-1/2" to 20-1/2"
AK9034AS	S	34-3/8" x 17-1/2" to 20-1/2"
VORTEX 290 CFM One-Piece Liner w/ Recirculating Option & Adjustable Depth		
AK9028AS290	S	28-3/8" x 17-1/2" to 20-1/2"
AK9034AS290	S	34-3/8" x 17-1/2" to 20-1/2"
Max. Blower CFM: 390, 290 Sones: 1.4-5 or 1.3-3.2 3 speed slide controls		
6" round vertical ducting Insert height 12-3/8" Hybrid baffle filter		
35W halogen lights Dual-level lighting		
Accessories		
ZRC-9000	Recirculating Kit (w/ charcoal filters)	
ZOF-C090	Charcoal Filter Replacement (Each)	
ZOB0023	Halogen Bulb (GU10 35W 120V)	
ZOB0040	Bloom™ GU10 LED (6W, 3000K)	



VORTEX ES



VORTEX ES 290 CFM ENERGY STAR One-Piece Liner w/ Adjustable Depth		
AK9028AS-ES	S	28-3/8" x 17-1/2" to 20-1/2"
AK9034AS-ES	S	34-3/8" x 17-1/2" to 20-1/2"
Max. Blower CFM: 290 Sones: 1.3-3.5 3 speed slide controls		
6" round vertical ducting Insert height 12-3/8" Hybrid baffle filter		
13W fluorescent lights ENERGY STAR certified		
Accessories		
ZOB0036	Fluorescent Bulb (GU24 13W 120V)	



MONSOON MINI

MONSOON MINI 300 CFM One-Piece Liner w/ Hybrid Baffle Filters		
AK9128AS-BF	S	28-3/8" x 18-1/16"
AK9134AS-BF	S	34-3/8" x 18-1/16"
Max. Blower CFM: 300 35W halogen lights ducting 3 speed slide controls		
7" or 3-1/4"x10" vertical Sones: 1.5-4 Dual-level lighting Hybrid Baffle filters		
ducting 3-1/4"x10" horizontal Insert height 6-1/8"		
Accessories		
ZRC-9100A	Recirculating Kit (w/ charcoal filters)	
ZOF-C091	Charcoal Filter Replacement (Each)	
ZOB0023	Halogen Bulb (GU10 35W 120V)	
ZOB0040	Bloom™ GU10 LED (6W, 3000K)	

Finish: (S)-Stainless Steel

Warranty: 3 years non-consumable parts, 1 year labor

UNDER-CABINET /
DOWNDRAFT



MONSOON I
ACT™

MODEL	FINISH	SIZE W x D
MONSOON I 600 CFM One-Piece Liner w/ Horizontal Ducting Option & ACT™		
AK9228AS	S	28-3/8" x 19-1/4"
AK9234AS	S	34-3/8" x 19-1/4"
<div> <div>Max. Blower CFM: 600 8" round vertical ducting 35W halogen lights ACT Max. Blower CFM: 390, 290</div> <div>8" or 3-1/4"x10" horizontal ducting Dual-level lighting Sones: 1-6 Insert height 12"</div> <div>Wireless remote control 6 speed electronic controls Pro baffle filters CleanAir function</div> </div>		
MONSOON I 1200 CFM One-Piece Liner w/ ACT™		
AK9240AS	S	40-3/8" x 19-1/4"
AK9246AS	S	46-3/8" x 19-1/4"
<div> <div>Max. Blower CFM: 1200 10" round vertical ducting 35W halogen lights ACT Max. Blower CFM: 590, 390</div> <div>Insert height 12"* Dual-level lighting Sones: 3.5-9 Wireless remote control</div> <div>6 speed electronic controls Pro baffle filters CleanAir function</div> </div>		
Accessories		
ZOB0023	Halogen Bulb (GU10 35W 120V)	
ZOB0040	Bloom™ GU10 LED (6W, 3000K)	
MUA006A	Make-Up Air Kit (600 CFM)	
MUA010A	Make-Up Air Kit (1200 CFM)	

* Height dimension does not include 5" tall, 10" round duct adapter.



MONSOON II
ACT™

MONSOON II 1200 CFM One-Piece Liner w/ Pro Baffle Filters & ACT™		
AK9334AS	S	34-3/8" x 22-1/2"
AK9340AS	S	40-3/8" x 22-1/2"
AK9346AS	S	46-3/8" x 22-1/2"
AK9352AS	S	52-3/8" x 22-1/2"
<div> <div>Max. Blower CFM: 1200 10" round vertical ducting 35W halogen lights ACT Max. Blower CFM: 590, 390</div> <div>Insert height 12"* Dual-level lighting Sones: 3.5-9 Wireless remote control</div> <div>6 speed electronic controls Pro baffle filters CleanAir function</div> </div>		
Accessories		
ZOB0023	Halogen Bulb (GU10 35W 120V)	
ZOB0040	Bloom™ GU10 LED (6W, 3000K)	
MUA010A	Make-Up Air Kit	

* Height dimension does not include 5" tall, 10" round duct adapter.



MONSOON DCBL
DCBL™ ACT™

MONSOON DCBL 715 CFM One-Piece Liner w/ DCBL Suppression System® & ACT™		
AK9428AS	S	28-3/8" x 22-1/2"
AK9434AS	S	34-3/8" x 22-1/2"
AK9440AS	S	40-3/8" x 22-1/2"
<div> <div>Max. Blower CFM: 715 8" round vertical ducting Bloom™ HD LED lights ACT Max. Blower CFM: 590, 390, 290</div> <div>8" or 3-1/4"x10" horizontal ducting Dual-level lighting Sones: 0.8-5.8 Insert height 12"</div> <div>Wireless remote control 6 speed LCD controls Pro baffle filters CleanAir function</div> </div>		
Accessories		
MUA008A	Make-Up Air Kit	

Finish: (S)-Stainless Steel

Warranty: 3 years non-consumable parts, 1 year labor

INSERT / WALL

PRO COLLECTION



WILLOW OUTDOOR

MODEL

FINISH

SIZE W x D

WILLOW 1,000 CFM Outdoor Insert in Stainless Steel or Gray Finish

AK8800AS	S	29-13/16" x 15-13/16"
AK8800AG	Gray	29-13/16" x 15-13/16"

Max. Blower CFM: 1,000	Sones: 3.5-8	2 speed marine grade controls
8" round vertical ducting	Powder coated gray (AK8800AG)	304 stainless steel (AK8800AS)
35W halogen lights	Single-level lighting	Pro baffle filters

Accessories

AK0886AS	20-1/2" - 23-1/2" Depth 304 SS Liner (Fits a 36" hood)
AK0886BS	26-1/2" - 29-1/2" Depth 304 SS Liner (Fits a 36" hood)
AK0882AS	20-1/2" - 23-1/2" Depth 304 SS Liner (Fits a 42" hood)
AK0882BS	26-1/2" - 29-1/2" Depth 304 SS Liner (Fits a 42" hood)
AK0888AS	20-1/2" - 23-1/2" Depth 304 SS Liner (Fits a 48" hood)
AK0888BS	26-1/2" - 29-1/2" Depth 304 SS Liner (Fits a 48" hood)
AK0884AS	20-1/2" - 23-1/2" Depth 304 SS Liner (Fits a 54" hood)
AK0884BS	26-1/2" - 29-1/2" Depth 304 SS Liner (Fits a 54" hood)
AK0880AS	20-1/2" - 23-1/2" Depth 304 SS Liner (Fits a 60" hood)
AK0880BS	26-1/2" - 29-1/2" Depth 304 SS Liner (Fits a 60" hood)
Z0B0023	Halogen Bulb (GU10 35W 120V)
Z0B0040	Bloom™ GU10 LED (6W, 3000)

PRO COLLECTION



SPRUCE OUTDOOR

SPRUCE 1200 CFM Outdoor Insert for Wall or Island Installation

AK9834AS	S	34-3/8" x 22-1/2"
AK9840AS	S	40-3/8" x 22-1/2"
AK9846AS	S	46-3/8" x 22-1/2"
AK9858AS	S	58-7/8" x 22-1/2"

Max. Blower CFM: 1200	Sones: 3.5-9	3 speed controls
10" round vertical ducting	Pro baffle filters	304 stainless steel
35W halogen lights	Dual-level lighting	Directional lighting

Accessories

Z0B0040	Bloom™ GU10 LED (6W, 3000K)
---------	-----------------------------

PRO COLLECTION



CYPRESS OUTDOOR

CYPRESS 1200 CFM Outdoor 18in Tall Pro-Style Hood w/ 32" Depth

AK7836BS	S	36" x 32"
AK7842BS	S	42" x 32"
AK7848BS	S	48" x 32"
AK7854BS	S	54" x 32"

Max. Blower CFM: 1200	Sones: 3.5-9	304 stainless steel
10" round vertical & horizontal ducting	Pro baffle filters	32" depth
35W halogen lights	Dual-level lighting	
	3 speed controls	

Accessories

AK0736BS	12"H x 36"W 304 SS Duct Cover (For AK7836BS)
AK0742BS	12"H x 42"W 304 SS Duct Cover (For AK7842BS)
AK0748BS	12"H x 48"W 304 SS Duct Cover (For AK7848BS)
AK0754BS	12"H x 54"W 304 SS Duct Cover (For AK7854BS)
Z1C-0078	Duct Cover Extension - 22" width (For a 10'-12' ceiling)
Z0B0023	Halogen Bulb (GU10 35W 120V)
Z0B0040	Bloom™ GU10 LED (6W, 3000K)

Finish: (G)-Gray (S)-Stainless Steel

Warranty: 3 years non-consumable parts, 1 year labor

WINE COOLERS



MODEL	FINISH	DESCRIPTION
PRW24C01BG	SS + Glass	24" Single Zone Wine Cooler

FEATURES

- Installation Type: Compact / Built-in / Freestanding
- Field-Reversible Door
- Capacity: 24" (53 bottles)
- 3-Color LED Lighting in Cloud White, Deep Blue and Amber
- Door Finish: 304-grade Stainless Steel + Glass
- Cabinet Finish: Black
- Interior: Black
- Active Cooling Technology
- Carbon Filter Air Filtration
- Door Open Alarm
- Dual-Pane, Low-e Argon-Filled Glass
- 39 dBA
- Electronic Capacitive Touch Controls
- 6 Full-Extension, Black Wood Racks with Stainless Steel Trim
- PreciseTemp™
- Temperature Range: 4° - 18°C (40° - 65°F)
- Vibration Dampening System
- Refrigerant R600a
- Dimensions: 23-7/8"W x 33-7/8"H x 23-5/8"D
- Optional Accessories: Pro handle kit: PRHAN-C001



PRW24C02BG	SS + Glass	24" Dual Zone Wine Cooler
------------	------------	---------------------------

FEATURES

- Installation Type: Compact/ Built-in/ Freestanding
- Field-Reversible Door
- Capacity: 45 bottles
- 3-Color LED Lighting in Cloud White, Deep Blue and Amber
- Door Finish: 304-grade Stainless Steel + Glass
- Cabinet Finish: Black
- Interior: Black
- Active Cooling Technology
- Carbon Filter Air Filtration
- 39 dBA
- Door Open Alarm
- Dual-Pane, Low-e Argon-Filled Glass
- Electronic Capacitive Touch Controls
- 5 Full-Extension, Black Wood Racks with Stainless Steel Trim
- PreciseTemp™
- Temperature Range: 4° - 18°C (40° - 65°F)
- Vibration Dampening System
- Refrigerant R600a
- Dimensions: 23-7/8"W x 33-7/8"H x 23-5/8"D
- Optional Accessories: Pro handle kit: PRHAN-C001

Warranty: 1 year labour, 2 years parts, 5 years compressor

WINE COOLERS



MODEL	FINISH	DESCRIPTION
PRW24C02ABSG	Black Stainless + Glass	24" Dual Zone Wine Cooler

FEATURES

- Installation Type: Compact/ Built-in/ Freestanding
- Field-Reversible Door
- Zero-clearance Door Hinge
- Capacity: 45 bottles
- 3-Color LED x 10 Lighting in Cloud White, Deep Blue and Amber
- Door Finish: 304-grade Stainless Steel + Glass
- Cabinet Finish: Black
- Interior: Black
- Active Cooling Technology
- 39 dBA
- Carbon Filter Air Filtration
- Door Open Alarm
- Dual-Pane, Low-e Argon-Filled Glass
- Electronic Capacitive Touch Controls
- 5 Full-Extension, Black Wood Racks with black Steel Trim
- PreciseTemp™
- Temperature Range: 4° - 18°C (40° - 65°F)
- Vibration Dampening System
- Refrigerant R600a
- Dimensions: 23-7/8"W x 33-7/8"H x 23-5/8"D



PRW24C02BPG	Panel Ready + Glass	24" Dual Zone Wine Cooler
-------------	---------------------	---------------------------

FEATURES

- Installation Type: Compact/ Built-in/ Freestanding
- Field-Reversible Door
- Capacity: 45 bottles
- 3-Color LED Lighting in Cloud White, Deep Blue and Amber
- Cabinet Finish: Black
- Interior: Black
- Active Cooling Technology
- Carbon Filter Air Filtration
- 39 dBA
- Door Open Alarm
- Dual-Pane, Low-e Argon-Filled Glass
- Electronic Capacitive Touch Controls
- 5 Full-Extension, Black Wood Racks
- PreciseTemp™
- Temperature Range: 4° - 18°C (40° - 65°F)
- Vibration Dampening System
- Refrigerant R600a
- Dimensions: 23-7/8"W x 33-7/8"H x 23-5/8"D

Warranty: 1 year labour, 2 years parts, 5 years compressor

BEVERAGE
COOLERS



MODEL	FINISH	DESCRIPTION
PRB24C01BG	SS + Glass	24" Single Zone Beverage Cooler

FEATURES

- Installation Type: Compact/ Built-in/ Freestanding
- Field-Reversible Door
- Capacity: 13 bottles (750 ml), 84 12oz cans or 7 bottles (750 ml), 112 12oz cans
- 3-Color LED Lighting in Cloud White, Deep Blue and Amber
- Door Finish: 304-grade Stainless Steel + Glass
- Cabinet Finish: Black
- Interior: Black
- Active Cooling Technology
- Carbon Filter Air Filtration
- Sabbath Mode
- Door Open Alarm
- Dual-Pane, Low-e Argon-Filled Glass
- Electronic Capacitive Touch Controls
- 39 dBA
- Shelving: 1 full-extension, black wood rack w/ stainless trim
- 2 adjustable, transparent-gray glass shelves w/ airflow openings
- PreciseTemp™
- Temperature Range: 1° - 10° C (34° - 50° F)
- Vibration Dampening System
- Refrigerant R600a
- Dimensions: 23-7/8"W x 33-7/8"H x 23-5/8"D



PRB24C01ABSG	Black Stainless + Glass	24" Single Zone Beverage Cooler
--------------	-------------------------	---------------------------------

FEATURES

- Installation Type: Compact/ Built-in/ Freestanding
- Field-Reversible Door
- Capacity: 13 bottles (750 ml), 84 12oz cans or 7 bottles (750 ml), 112 12oz cans
- 3-Color LED Lighting in Cloud White, Deep Blue and Amber
- Door Finish: 304-grade Stainless Steel + Glass
- Cabinet Finish: Black
- Interior: Black
- Active Cooling Technology
- 39 dBA
- Sabbath Mode
- Carbon Filter Air Filtration
- Door Open Alarm
- Dual-Pane, Low-e Argon-Filled Glass
- Electronic Capacitive Touch Controls
- Shelving: 1 full-extension, black wood rack w/ stainless trim
- 2 adjustable, transparent-gray glass shelves w/ airflow openings
- PreciseTemp™
- Temperature Range: 1° - 10° C (34° - 50° F)
- Vibration Dampening System
- Refrigerant R600a
- Dimensions: 23-7/8" W x 33-7/8" H x 23-5/8" D



PRB24C01BPG	Panel Ready + Glass	24" Single Zone Beverage Cooler
-------------	---------------------	---------------------------------

FEATURES

- Installation Type: Compact/ Built-in/ Freestanding
- Field-Reversible Door
- Zero-clearance Door Hinge
- Capacity: 13 bottles (750 ml), 98 12oz cans or 7 bottles (750 ml), 127 12oz cans
- 3-Color LED Lighting in Cloud White, Deep Blue and Amber x 12
- Door Finish: 304 grade Black Stainless + Glass
- Cabinet Finish: Black
- Interior: Black
- Active Cooling Technology
- Carbon Filter Air Filtration
- 39 dBA
- Door Open Alarm
- Dual-Pane, Low-e Argon-Filled Glass
- Electronic Capacitive Touch Controls
- Shelving: 1 full-extension, black wood rack
- 2 adjustable, transparent-gray glass shelves w/ airflow openings
- PreciseTemp™
- Temperature Range: 1° - 10°C (34° - 50°F)
- Vibration Dampening System
- Refrigerant R600a
- Dimensions: 23-7/8" W x 33-7/8" H x 23- 5/8" D

Warranty: 1 year labour, 2 years parts, 5 years compressor

FRENCH DOOR
WINE COOLERS



MODEL	FINISH	DESCRIPTION
PRW24C32BG	SS + Glass	24" Dual Zone French Door Wine Cooler

FEATURES

- Installation Type: Compact/ Built-in/ Freestanding
- Capacity: 42 bottles (21 Left / 21 Right)
- 3-Color LED Lighting in Cloud White, Deep Blue and Amber
- Door Finish: 304-grade Stainless Steel + Glass
- Cabinet Finish: Black
- Interior: Black
- Active Cooling Technology
- Carbon Filter Air Filtration
- 38 dBA
- Door Open Alarm
- Dual-Pane, Low-e Argon-Filled Glass
- Electronic Capacitive Touch Controls
- 6 Full-Extension, Black Wood Racks with Stainless Steel Trim on each side
- PreciseTemp™
- Temperature Range: 4° - 18°C (40° - 65°F)
- Vibration Dampening System
- Refrigerant R600a
- Dimensions: 23-7/8" W x 33-7/8" H x 23-3/8" D



PRWB24C32BG	SS + Glass	24" Dual Zone French Door Wine & Beverage Cooler
-------------	------------	--

FEATURES

- Installation Type: Compact/ Built-in/ Freestanding
- Capacity: 21 bottles of wine / 60 12 oz cans
- 3-Color LED Lighting in Cloud White, Deep Blue and Amber
- Door Finish: 304-grade Stainless Steel + Glass
- Cabinet Finish: Black
- Interior: Black
- Active Cooling Technology
- Carbon Filter Air Filtration
- Door Open Alarm
- Dual-Pane, Low-e Argon-Filled Glass
- 38 dBA
- Electronic Capacitive Touch Controls
- Wine Shelving: 6 Full-Extension, Black Wood Racks with Stainless Steel Trim
- Beverage Shelving: 3 adjustable, transparent-gray glass shelves w/ airflow openings
- PreciseTemp™
- Temperature Range: Wine: 4° - 18°C (40° - 65°F)
- Vibration Dampening System
- Refrigerant R600a
- Dimensions: 23.9"W x 33-7/8"H x 23-3/8"D

Warranty: 1 year labour, 2 years parts, 5 years compressor

FULL-SIZE WINE COOLERS



OUTDOOR BEVERAGE COOLER



MODEL	FINISH	DESCRIPTION
PRW24F01BG	SS + Glass	24" Full Size Dual Zone Wine Cooler
FEATURES <ul style="list-style-type: none"> • Installation Type: Built-in / Freestanding • Field-Reversible Door • Capacity: 148 bottles (132 bottles with display rack) • 3-Color LED Lighting in Cloud White, Deep Blue and Amber • Door Finish: 304-grade Stainless Steel + Glass • Cabinet Finish: Black • Interior: Black • Active Cooling Technology • Carbon Filter Air Filtration • 41 dBA • Door Open Alarm • Sabbath Mode • Dual-Pane, Low-e Argon-Filled Glass • Electronic Capacitive Touch Controls • 14 full-extension, black wood racks w/ stainless trim • 1 removable half rack • One 5 bottle display rack • PreciseTemp™ • Temperature Range: 4° - 18°C (40° - 65°F) • Vibration Dampening System • Refrigerant R600a • Dimensions: 23-7/8" W x 69-1/2" H x 27-1/2" D 		
PRW24F02BG	SS + Glass	24" Full-Size Dual Zone Wine Cooler
FEATURES <ul style="list-style-type: none"> • Installation Type: Built-in / Freestanding • Field-Reversible Door • Capacity: 138 bottles • 3-Color LED Lighting in Cloud White, Deep Blue and Amber • Door Finish: 304-grade Stainless Steel + Glass • Cabinet Finish: Black • Interior: Black • Active Cooling Technology • Carbon Filter Air Filtration • 44 dBA • Door Open Alarm • Dual-Pane, Low-e Argon-Filled Glass • Electronic Capacitive Touch Controls • 13 full-extension, black wood racks w/ stainless trim • 1, half capacity wood rack • PreciseTemp™ • Sabbath Mode • Temperature Range: 4° - 18°C (40° - 65°F) • Vibration Dampening System • Refrigerant R600a • Dimensions: 23-7/8" W x 69-1/2" H x 27-1/2" D 		
PRB24C01AS-OD	Stainless Steel	24" Outdoor Beverage Cooler
FEATURES <ul style="list-style-type: none"> • Installation Type: Compact/ Built-in/ Freestanding • Field-Reversible Door • Capacity: 136 12oz cans • Cloud White LED Lighting • Door & Cabinet Finish: 304-grade Stainless Steel • Interior: Black • Active Cooling Technology • 39 dBA • Door Open Alarm • Electronic Capacitive Touch Controls • 1 full-extension, black wire rack + 2 adjustable, transparent-gray glass shelves • Door Lock • Sabbath Mode • PreciseTemp™ • Temperature Range: 4° - 18°C (40° - 65°F) • Vibration Dampening System • Refrigerant R600a • Dimensions: 23-7/8" W x 33-7/8" H x 23-1/2" D 		

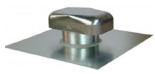
Warranty: 1 year labour, 2 years parts, 5 years compressor

**VENTILATION
ACCESSORIES**
MODEL DESCRIPTION
HVAC Accessories (Heating, Ventilation and Air-Conditioning)


AK00029	6" round in-line damper
AK00049	7" round in-line damper
AK00069	8" round in-line damper



AK00039	7 to 6" round reducer
AK00037	8 to 6" round reducer
AK00035	8 to 7" round reducer
AK00040	10 to 8" round reducer



AK00046	6" round exhaust roof cap w/bird screen
AK00047	7" round exhaust roof cap w/bird screen
AK00048	8" round exhaust roof cap w/bird screen
AK00050	10" round exhaust roof cap w/bird screen



AK00041	3-1/4" x 10" rectangular exhaust wall cap w/ damper & bird screen
---------	---



AK00042	6" round exhaust wall cap w/damper & bird screen
AK00043	7" round exhaust wall cap w/damper & bird screen
AK00044	8" round exhaust wall cap w/damper & bird screen
AK00045	10" round exhaust wall cap w/damper & bird screen



AK00030	6" round inlet wall cap w/bird screen
AK00031	7" round inlet wall cap w/bird screen
AK00032	8" round inlet wall cap w/bird screen
AK00052	10" round inlet wall cap w/bird screen



AK00066	6" round damper with collar
AK00067	7" round damper with collar

Universal Make-Up Air Damper Kits


MUA006A	Dispositif d'apport d'air de 6" (jusqu'à 600 PCM)
MUA008A	Dispositif d'apport d'air de 8" (jusqu'à 1000 PCM)
MUA010A	Dispositif d'apport d'air de 10" (jusqu'à 1200 PCM)

DID YOU KNOW Zephyr's Universal Make-Up Air Dampers can be used with any range hood over 300 CFM, even non-Zephyr branded range hoods.


Warm White LED Bulb - Direct Replacement for GU10 Halogen Bulbs

Z0B0040	Bloom™ GU10 LED (6W, 3000K)
---------	-----------------------------

WINE & BEVERAGE
ACCESSORIES



PRHAN-C001	Professional handle x1 for PRB and PRW compact
PRHAN-C002	Professional handle x2 for French Door
Z0F-C007	Carbon Filter

PRHAN-C001	Professional handle x1 for PRB and PRW compact
PRHAN-C101	Contemporary handle x1, ss, compact
PRHAN-C002	Professional handle x2 for French Door
PRHAN-F001	Pro Handle Kit for PRW24F
PRDISP-F001	Five Bottle Display Rack for PRW24F02
Z0F-C007	Carbon Filter

[illegible]

[illegible]

[illegible]

PRODUCT GUIDE 2020

ZEPHYR

T 800 361 0799 F 450 682 7943

www.distinctive-online.com info@distinctive-online.com

ADMINISTRATION & WAREHOUSE

2025 Cunard, Laval (QC) H7S 2N1

PARTS & SERVICE

service@distinctive-online.com

ORDER DESK

orderdesk@distinctive-online.com