



BERTAZZONI

INDEX

FREESTANDING RANGES

| | |
|---|-----------|
| Gas Ranges - Professional / Master / Heritage | 3 - 4 - 5 |
| Dual Fuel Ranges - Professional / Master / Heritage | 6 - 7 |
| Induction Ranges - Professional / Master | 8 - 9 |
| Electric ranges | 10 |

BUILT-IN OVENS & SPECIALTY

| | |
|--|-------|
| Electric Ovens - Professional / Master | 11-12 |
| Speed Ovens - Professional / Master | 12 |
| Steam Ovens - Professional / Master | 12 |
| Microwave Ovens / OTR / Drawer - Professional / Master | 13 |
| Warming Drawers - Professional / Master | 13 |

RANGETOPS & COOKTOPS

| | |
|--------------------|-------|
| Gas Rangetops | 14 |
| Gas Cooktops | 14-15 |
| Induction Cooktops | 16 |
| Electric Cooktops | 16 |

REFRIGERATION

| | |
|-------------------------------------|-------|
| French door Refrigerators | 17 |
| Freestanding Refrigerators | 18 |
| Integrated Refrigerator | 19 |
| Built-in Bottom Mount Refrigerators | 19 |
| Built-in Refrigerator | 20-21 |
| Built-in Wine Cellars | 21 |
| Installation Trim Kits | 22 |

CLEAN UP

| | |
|----------------------|----|
| Built-in Dishwashers | 23 |
|----------------------|----|

VENTILATION

| | |
|--|-------|
| Undermount / Wallmount hoods | 24 |
| Contemporary / Chimney Wallmount Hoods | 25 |
| T-Shape Wallmount | 25-26 |
| Heritage | 26 |
| Insert | 26 |
| Visor | 27 |

ACCESSORIES

| | |
|--|----|
| Duct Covers and Recirculation Kits | 28 |
| Baffle, Mesh and Charcoal Filters | 29 |
| Toekick Panels, Knobs, Backguards, Decor Sets | 30 |
| Telescopic Shelves, Trays, Simmer/Wok/Griddle Plates | 31 |
| Ventilation Accessory Guide Matrix | 32 |
| Bertazzoni Color Options | 33 |

TWO YEAR LIMITED WARRANTY

Bertazzoni SpA will repair or replace any component part which fails or proves defective due to materials and/or workmanship within 2 years from the date of installation and under conditions of normal residential use. Repair or replacement will be free of charge, including labor at standard rates and shipping expenses. Repair service must be performed by a Bertazzoni Authorized Service Center during normal working hours. Cosmetic damages must be reported no later than 30 days after installation. This warranty does not cover the use of the product in any commercial application.

Specifications and features may vary. Please refer to the manufacturer's website for the latest updates.

ALL SERIES

ALL GAS RANGES



MAST486GGASBIE



HERT366GASXT



PROF304GASART



MAST244GASXE

48" ALL-GAS RANGE

- Stainless steel electric griddle and cover (1100W)
- 2 x 19000 BTU power burners with dual ring flame delivering fastest time-to-boil in class
- 4.7 cu.ft gas main oven with dual horizontal convection fans for even baking and roasting on 7 shelf levels (including 3 wire shelves, baking tray with grill trivet, 1 set of telescopic glides)
- 2.4 cu.ft auxiliary gas oven (including 2 wire shelves, 1 set of telescopic glides)
- Main: Bake element 3500-14000 BTU - Main: Broiler element 9000 BTU - Aux: Bake element 2400-7000 BTU
- Dimensions: **W** 48" **H** 35-3/4" - 37-1/2" (adjustable legs) **D** 25-3/16" (handle not included)

36" ALL-GAS RANGE

- 2 x 19000 BTU power burners with dual ring flame delivering fastest time-to-boil in class
- 5.9 cu.ft gas oven with dual horizontal convection fans for even baking and roasting on 7 shelf levels (including 2 wire shelves, baking tray with grill trivet, 1 set of telescopic glides)
- Bake element 4100-17000 BTU - Broiler element 11000 BTU
- Dimensions: **W** 36" **H** 35-3/4" - 37-1/2" (adjustable legs) **D** 25-3/16" (handle not included)

30" ALL-GAS RANGE

- 1 x 19000 BTU power burner with dual ring flame delivering fastest time-to-boil in class
- 4.7 cu.ft gas oven with dual horizontal convection fans for even baking and roasting on 7 shelf levels (including 2 wire shelves, baking tray with grill trivet, 1 set of telescopic glides)
- Bake element 3500-14000 BTU - Broiler element 9000 BTU
- Dimensions: **W** 30" **H** 35-3/4" - 37-1/2" (adjustable legs) **D** 25-3/16" (handle not included)

24" ALL-GAS RANGE

- 1 x 19000 BTU power burner with dual ring flame delivering fastest time-to-boil in class
- 2.4 cu.ft gas oven with convection fan for even baking and roasting on 5 shelf levels
- Oven door with soft-motion hinges
- Convenient bottom storage space with stainless steel access panel
- Dimensions: **W** 23-15/16" **H** 35-3/4" - 37-1/2" (adjustable legs) **D** 25-3/16"

ALL-GAS RANGES - ADDITIONAL FEATURES

- Counter-deep maintop for flush installation with kitchen countertops and cabinets
- Soft-close oven door with edge-to-edge tempered glass (T models)
- Electric ignition with thermocouple safety device (for gas burners)
- Extra-large high-power infrared gas broiler for broiling and grilling (except 24" model)
- Elegant temperature gauge for control of oven temperature during pre-heating and baking (except 24" model)
- Smooth-glide telescopic racks (except 24" model)
- Fingerprint free stainless steel
- Included accessories: Wok ring (T models only), Simmer ring, 1" stainless steel island trim
- Ranges are available in NG (standard) or LP (selected models). A gas conversion kit is included with every range

Specifications and features may vary. Please refer to the manufacturer's website for the latest updates.

ALL SERIES

ALL GAS RANGES
48" ALL-GAS RANGES

| | | |
|-----------------|---|---|
| PROF486GGASXT | ● | 48" Professional Series Range - Gas Oven - 6 brass burners + griddle |
| PROF486GGASXTLP | ● | 48" Professional Series Range - Gas Oven - 6 brass burners + griddle - LP version |
| PROF486GGASNET | ● | 48" Professional Series Range - Gas Oven - 6 brass burners + griddle |
| PROF486GGASBIT | ○ | 48" Professional Series Range - Gas Oven - 6 brass burners + griddle |
| PROF486GGASGIT | ● | 48" Professional Series Range - Gas Oven - 6 brass burners + griddle |
| PROF486GGASART | ● | 48" Professional Series Range - Gas Oven - 6 brass burners + griddle |
| PROF486GGASROT | ● | 48" Professional Series Range - Gas Oven - 6 brass burners + griddle |
| MAST486GGASXT | ● | 48" Master Series Range - Gas Oven - 6 brass burners + griddle |
| MAST486GGASXTLP | ● | 48" Master Series Range - Gas Oven - 6 brass burners + griddle - LP |
| MAST486GGASXE | ● | 48" Master Series Range - Gas Oven - 6 aluminum burners + griddle |
| MAST486GGASXELP | ● | 48" Master Series Range - Gas Oven - 6 aluminum burners + griddle - LP version |
| MAST486GGASNEE | ● | 48" Master Series Range - Gas Oven - 6 aluminum burners + griddle |
| MAST486GGASBIE | ○ | 48" Master Series Range - Gas Oven - 6 aluminum burners + griddle |
| HERT486GGASXT | ● | 48" Heritage Series Range - Gas Oven - 6 brass burners + griddle |
| HERT486GGASAVT | ○ | 48" Heritage Series Range - Gas Oven - 6 brass burners + griddle |
| HERT486GGASNET | ● | 48" Heritage Series Range - Gas Oven - 6 brass burners + griddle |

36" ALL-GAS RANGES

| | | |
|----------------|---|---|
| PROF366GASXT | ● | 36" Professional Series Range - Gas oven - 6 brass burners |
| PROF366GASXTLP | ● | 36" Professional Series Range - Gas oven - 6 brass burners - LP version |
| PROF366GASNET | ● | 36" Professional Series Range - Gas oven - 6 brass burners |
| PROF366GASBIT | ○ | 36" Professional Series Range - Gas oven - 6 brass burners |
| PROF366GASGIT | ● | 36" Professional Series Range - Gas oven - 6 brass burners |
| PROF366GASART | ● | 36" Professional Series Range - Gas oven - 6 brass burners |
| PROF366GASROT | ● | 36" Professional Series Range - Gas oven - 6 brass burners |
| MAST366GASXT | ● | 36" Master Series Range - Gas Oven - 6 brass burners |
| MAST366GASXTLP | ● | 36" Master Series Range - Gas Oven - 6 brass burners - LP |
| MAST365GASXE | ● | 36" Master Series Range - Gas oven - 5 aluminum burners |
| MAST365GASXELP | ● | 36" Master Series Range - Gas oven - 5 aluminum burners - LP |
| MAST365GASNEE | ● | 36" Master Series Range - Gas oven - 5 aluminum burners |
| MAST365GASBIE | ○ | 36" Master Series Range - Gas oven - 5 aluminum burners |
| HERT366GASXT | ● | 36" Heritage Series range - Gas Oven - 6 brass burners |
| HERT366GASAVT | ○ | 36" Heritage Series range - Gas Oven - 6 brass burners |
| HERT366GASNET | ● | 36" Heritage Series range - Gas Oven - 6 brass burners |

Specifications and features may vary. Please refer to the manufacturer's website for the latest updates.

ALL SERIES

ALL GAS RANGES



PROF486GGASART



MAST365GASBIE



PROF304GASGIT



MAST244GASNEE

30" ALL-GAS RANGES

| | | |
|----------------|---|---|
| PROF304GASXT | ● | 30" Professional Series Range - Gas oven - 4 brass burners |
| PROF304GASXTLP | ● | 30" Professional Series Range - Gas oven - 4 brass burners - LP version |
| PROF304GASNET | ● | 30" Professional Series Range - Gas oven - 4 brass burners |
| PROF304GASBIT | ○ | 30" Professional Series Range - Gas oven - 4 brass burners |
| PROF304GASGIT | ● | 30" Professional Series Range - Gas oven - 4 brass burners |
| PROF304GASART | ● | 30" Professional Series Range - Gas oven - 4 brass burners |
| PROF304GASROT | ● | 30" Professional Series Range - Gas oven - 4 brass burners |
| | | |
| MAST305GASXE | ● | 30" Master Series Range - Gas oven - 5 aluminum burners |
| MAST305GASXELP | ● | 30" Master Series Range - Gas oven - 5 aluminum burners - LP |
| MAST305GASNEE | ● | 30" Master Series Range - Gas oven - 5 aluminum burners |
| MAST305GASBIE | ○ | 30" Master Series Range - Gas oven - 5 aluminum burners |

24" ALL-GAS RANGES

| | | |
|-----------------|---|--|
| PROF244GASXE | ● | 24" Professional Series range - Gas oven - 4 aluminum burners |
| PROF244GASXE LP | ● | 24" Professional Series range - Gas oven - 4 aluminum burners - LP version |
| | | |
| MAST244GASXE | ● | 24" Master Series range - Gas oven - 4 aluminum burners |
| MAST244GASXE LP | ● | 24" Master Series range - Gas oven - 4 aluminum burners - LP version |
| MAST244GASNEE | ● | 24" Master Series range - Gas oven - 4 aluminum burners |
| MAST244GASBIE | ○ | 24" Master Series range - Gas oven - 4 aluminum burners |



6 Burner Configuration



Professional Series Knob



Master Series Knob



Heritage Series Knob

Specifications and features may vary. Please refer to the manufacturer's website for the latest updates.

ALL SERIES

DUAL FUEL RANGES



HERT486DFSNET



MAST366DFSXT



PROF304DFSROT



MAST305DFMBIE



Professional Series Handle



Master Series Handle



Heritage Series Handle

48" DUAL FUEL RANGE

- Stainless steel electric griddle and cover (1100W)
- 2 x 19000 BTU power burners with dual ring flame delivering fastest time-to-boil in class
- 4.6 cu.ft main electric oven with dual **diagonal** convection fans for even baking and roasting on 7 shelf levels (including 3 wire shelves, baking tray with grill trivet, 1 set of telescopic glides)
- 2.4 cu.ft auxiliary electric oven (including 2 wire shelves, 1 set of telescopic glides)
- 8-pass electric broiler in main oven with optional convection and 6-pass electric broiler in auxiliary oven
- Bake: Bottom 2100W / 900W - Bake: Top 1400W / 900W - Broiler: 3400W / 2000W - Convection: 2 x 1650W
- Dimensions: W 48" H 35-3/4" - 37-1/2" (adjustable legs) D 25-3/16" (handle not included)

36" DUAL FUEL RANGE

- 2 x 19000 BTU power burners with dual ring flame delivering fastest time-to-boil in class (1 power burner for DFM models)
- **DFS** Models: 5.7 cu.ft main electric oven with dual **diagonal** convection fans for even baking and roasting on 7 shelf levels (including 3 wire shelves, baking tray with grill trivet, 1 set of telescopic glides)
- **DFM** Models: 5.9 cu.ft main electric oven with dual **horizontal** convection fans on 7 shelf levels (including 3 wire shelves, baking tray with grill trivet)
- 10-pass electric broiler for broiling and grilling, with optional convection
- Bake: Bottom 2400W - Bake: Top 1600W - Broiler: 4000W - Convection: 2 x 1650W (DFS models)
- Bake: Bottom 1600W - Bake: Top 1200W - Broiler: 2700W - Convection: 2 x 1200W (DFM models)
- Dimensions: W 36" H 35-3/4" - 37-1/2" (adjustable legs) D 25-3/16" (handle not included)

30" DUAL FUEL RANGE

- 1 x 19000 BTU power burner with dual ring flame delivering fastest time-to-boil in class
- **DFS** Models: 4.6 cu.ft main electric oven with dual **diagonal** convection fans for even baking and roasting on 7 shelf levels (including 3 wire shelves, baking tray with grill trivet, 1 set of telescopic glides)
- **DFM** Models: 4.7 cu.ft main electric oven with dual **horizontal** convection fans on 7 shelf levels (including 3 wire shelves, baking tray with grill trivet)
- 8-pass electric broiler for broiling and grilling, with optional convection
- Bake: Bottom 2100W - Bake: Top 1400W - Broiler: 3400W - Convection: 2 x 1650W (DFS models)
- Bake: Bottom 1600W - Bake: Top 1200W - Broiler: 2700W - Convection: 2 x 1200W (DFM models)
- Dimensions: W 30" H 35-3/4" - 37-1/2" (adjustable legs) D 25-3/16" (handle not included)

DUAL FUEL RANGES - ADDITIONAL FEATURES

- **DFS** Models Functions (Dual Fuel **Self Clean**):
Warming/Proofing/Dehydrate - Bake - Convection - Convection Bake - Broil - Convection Broil - Pizza - Clean
- **DFM** Models Functions (Dual Fuel **Manual Clean**):
Fast preheat - Bake - Bottom Bake - Upper bake - Convection - Convection Bake - Broil - Convection Broil - Pizza
- Electric ignition with thermocouple safety device
- Counter-deep maintop for flush installation with countertops and cabinets
- Fingerprint free stainless steel
- Food temperature probe for accurate roasting + baking (DFS models only)
- Elegant digital gauge for precise control of oven temperature during pre-heating and baking with integrated controls for the temperature probe (DFS models only)
- Soft-close oven door with edge-to-edge tempered glass (DFS models)
- Oven door with edge-to-edge tempered glass (DFM models)
- Included accessories: Wok ring (except DFM models), Simmer ring, 1" stainless steel island trim
- Ranges are available in NG (standard) or LP (selected models). A gas conversion kit is included with every range

Specifications and features may vary. Please refer to the manufacturer's website for the latest updates.

ALL SERIES

DUAL FUEL RANGES
48" DUAL FUEL RANGES

| | | |
|----------------|---|--|
| PROF486GDFSXT | ● | 48" Professional Series Range - Electric self clean oven - 6 brass burners + griddle |
| PROF486GDFSNET | ● | 48" Professional Series Range - Electric self clean oven - 6 brass burners + griddle |
| PROF486GDFSBIT | ○ | 48" Professional Series Range - Electric self clean oven - 6 brass burners + griddle |
| PROF486GDFSGIT | ● | 48" Professional Series Range - Electric self clean oven - 6 brass burners + griddle |
| PROF486GDFSART | ● | 48" Professional Series Range - Electric self clean oven - 6 brass burners + griddle |
| PROF486GDFSROT | ● | 48" Professional Series Range - Electric self clean oven - 6 brass burners + griddle |
| MAST486GDFSXT | ● | 48" Master Series Range - Electric self clean oven - 6 brass burners + griddle |
| MAST486GDFMXE | ● | 48" Master Series Range - Electric oven - 6 aluminium burners + griddle |
| HERT486GDFSXT | ● | 48" Heritage Series Range - Electric self clean oven - 6 brass burners + griddle |
| HERT486GDFSART | ○ | 48" Heritage Series Range - Electric self clean oven - 6 brass burners + griddle |
| HERT486GDFSNET | ● | 48" Heritage Series Range - Electric self clean oven - 6 brass burners + griddle |

36" DUAL FUEL RANGES

| | | |
|---------------|---|--|
| PROF366DFSXT | ● | 36" Professional Series Range - Electric self clean oven - 6 brass burners |
| PROF366DFSNET | ● | 36" Professional Series Range - Electric self clean oven - 6 brass burners |
| PROF366DFSBIT | ○ | 36" Professional Series Range - Electric self clean oven - 6 brass burners |
| PROF366DFSART | ● | 36" Professional Series Range - Electric self clean oven - 6 brass burners |
| PROF366DFSROT | ● | 36" Professional Series Range - Electric self clean oven - 6 brass burners |
| MAST366DFSXT | ● | 36" Master Series Range - Electric self clean oven - 6 brass burners |
| MAST366DFMXE | ● | 36" Master Series Range - Electric oven - 5 aluminum burners |
| MAST366DFMNEE | ● | 36" Master Series Range - Electric oven - 5 aluminum burners |
| MAST366DFMBIE | ○ | 36" Master Series Range - Electric oven - 5 aluminum burners |
| HERT366DFSXT | ● | 36" Heritage Series Range - Electric self clean oven - 6 brass burners |
| HERT366DFSART | ○ | 36" Heritage Series Range - Electric self clean oven - 6 brass burners |
| HERT366DFSNET | ● | 36" Heritage Series Range - Electric self clean oven - 6 brass burners |

30" DUAL FUEL RANGES

| | | |
|---------------|---|--|
| PROF304DFSXT | ● | 30" Professional Series Range - Electric self clean oven - 4 brass burners |
| PROF304DFSNET | ● | 30" Professional Series Range - Electric self clean oven - 4 brass burners |
| PROF304DFSBIT | ○ | 30" Professional Series Range - Electric self clean oven - 4 brass burners |
| PROF304DFSART | ● | 30" Professional Series Range - Electric self clean oven - 4 brass burners |
| PROF304DFSROT | ● | 30" Professional Series Range - Electric self clean oven - 4 brass burners |
| MAST305DFMXE | ● | 30" Master Series Range - Electric oven - 5 aluminum burners |
| MAST305DFMNEE | ● | 30" Master Series Range - Electric oven - 5 aluminum burners |
| MAST305DFMBIE | ○ | 30" Master Series Range - Electric oven - 5 aluminum burners |

Specifications and features may vary. Please refer to the manufacturer's website for the latest updates.

PROFESSIONAL &
MASTER SERIES

INDUCTION RANGES



PROF365INSGIT



MAST365INSXT



PROF304INSBIT



MAST304INMXE

36" INDUCTION RANGE 5 ZONES

- **INS** Models: 5.7 cu.ft electric oven with dual **diagonal** convection fans for even baking and roasting on 7 shelf levels (including 2 wire shelves, baking tray with grill trivet, 1 set of telescopic glides)
- **INM** Models: 5.9 cu.ft electric oven with dual **horizontal** convection fans for even baking and roasting on 7 shelf levels (including 2 wire shelves, baking tray with grill trivet)
- Maintop with 5 latest generation extra-large induction zones and bridging of right-side zones
- 10-pass electric broiler for broiling and grilling, with optional convection
- Bake: Bottom 2400W - Bake: Top 1600W - Broiler: 4000W - Convection: 2 x 1650W (INS models)
Electrical supply: 120/240V 60 Hz -17,000W / 50 Amp
- Bake: Bottom 1600W - Bake: Top 1200W - Broiler: 2700W - Convection: 2 x 1200W (INM models)
Electrical supply: 120/240V 60 Hz -15,000W / 40 Amp
- Dimensions: W 36" H 35-3/4" - 37-1/2" (adjustable legs) D 25-3/16" (handle not included)

30" INDUCTION RANGE 4 ZONES

- **INS** Models: 4.6 cu.ft electric oven with dual **diagonal** convection fans for even baking and roasting on 7 shelf levels (including 2 wire shelves, baking tray with grill trivet, 1 set of telescopic glides)
- **INM** Models: 4.7 cu.ft electric oven with dual **horizontal** convection fans for even baking and roasting on 7 shelf levels (including 2 wire shelves, baking tray with grill trivet)
- Maintop with 4 latest generation extra-large induction zones and bridging of right-side zones
- 8-pass electric broiler for broiling and grilling, with optional convection
- Bake: Bottom 2100W - Bake: Top 1400W - Broiler: 3400W - Convection: 2 x 1650W (INS models)
Electrical supply: 120/240V 60 Hz -13,000W / 40 Amp
- Bake: Bottom 1600W - Bake: Top 1200W - Broiler: 2700W - Convection: 2 x 1200W (INM models)
Electrical supply: 120/240V 60 Hz -11,000W / 40 Amp
- Dimensions: W 30" H 35-3/4" - 37-1/2" (adjustable legs) D 25-3/16" (handle not included)

INDUCTION RANGES - ADDITIONAL FEATURES

- **INS** Models Functions (**Induction Self Clean**): Warming/Proofing/Dehydrate - Bake - Convection - Convection Bake - Broil - Convection Broil - Pizza - Clean
- **INM** Models Functions (**Induction Manual Clean**): Fast preheat - Bake - Bottom Bake - Upper bake - Convection - Convection Bake - Broil - Convection Broil - Pizza
- Counter-deep maintop for flush installation with countertops and cabinets
- Fingerprint free stainless steel
- Food temperature probe for accurate roasting and baking (INS models only)
- Elegant digital gauge for precise control of oven temperature during pre-heating and baking with integrated controls for the temperature probe (INS models only)
- Soft-close oven door with edge-to-edge tempered glass (INS models)
- Included accessory: 1" stainless steel island trim

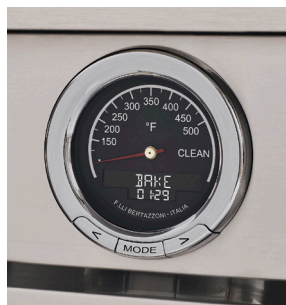
Specifications and features may vary. Please refer to the manufacturer's website for the latest updates.

PROFESSIONAL &
MASTER SERIES

INDUCTION RANGES



5 Heating Zone Configuration



Digital Gauge
(Self Clean Models)



Gauge
(Manual Clean Models)

36" INDUCTION RANGES

| | | |
|---------------|---|--|
| PROF365INSXT | ● | 36" Professional Series Range - Electric self clean oven - 5 induction zones |
| PROF365INSNET | ● | 36" Professional Series Range - Electric self clean oven - 5 induction zones |
| PROF365INSBIT | ○ | 36" Professional Series Range - Electric self clean oven - 5 induction zones |
| PROF365INSGIT | ● | 36" Professional Series Range - Electric self clean oven - 5 induction zones |
| PROF365INSART | ● | 36" Professional Series Range - Electric self clean oven - 5 induction zones |
| PROF365INSROT | ● | 36" Professional Series Range - Electric self clean oven - 5 induction zones |

| | | |
|--------------|---|--|
| MAST365INSXT | ● | 36" Master Series Range - Electric self clean oven - 5 induction zones |
| MAST365INMXE | ● | 36" Master Series Range - Electric manual clean oven - 5 induction zones |

30" INDUCTION RANGES

| | | |
|---------------|---|--|
| PROF304INSXT | ● | 30" Professional Series Range - Electric self clean oven - 4 induction zones |
| PROF304INSNET | ● | 30" Professional Series Range - Electric self clean oven - 4 induction zones |
| PROF304INSBIT | ○ | 30" Professional Series Range - Electric self clean oven - 4 induction zones |
| PROF304INSGIT | ● | 30" Professional Series Range - Electric self clean oven - 4 induction zones |
| PROF304INSART | ● | 30" Professional Series Range - Electric self clean oven - 4 induction zones |
| PROF304INSROT | ● | 30" Professional Series Range - Electric self clean oven - 4 induction zones |

| | | |
|--------------|---|--|
| PROF304INMXE | ● | 30" Professional Series Range - Electric manual clean oven - 4 induction zones |
| MAST304INMXE | ● | 30" Master Series Range - Electric manual clean oven - 4 induction zones |

Specifications and features may vary. Please refer to the manufacturer's website for the latest updates.

PROFESSIONAL &
MASTER SERIES

ELECTRICAL RANGES



PROF304CEMXE



MAST304CEMXE

PROF304CEMXE ● 30" Professional Series Range - Electric - 4 Heating Zones

MAST304CEMXE ● 30" Professional Series Range - Electric - 4 Heating Zones

- 4.7 cu. ft electric oven with dual horizontal convection fans for even baking and roasting on 7 shelf levels
- 6-pass electric broiler for broiling and grilling, with optional convection
- Bake: Bottom 1600W- Bake: Top 1200W - Broiler: 2700W - Convection: 2 x 1200W
- Elegant temperature gauge for control of oven temperature during pre-heating and baking
- Oven door with edge-to-edge tempered glass and soft-motion hinges
- Maintop: Front Left 9" 2100W - Back Left 6.5" 1200W - Front Right 6.5" 1200W - Back Right 7.75" 1800W
- Residual heat indicator light
- 1" stainless steel island trim
- Electrical Supply 120/240V 60 Hz - 10,000 W / 40 Amp dedicated circuit

Specifications and features may vary. Please refer to the manufacturer's website for the latest updates.

PROFESSIONAL &
MASTER SERIES

BUILT-IN OVENS

30" ELECTRIC CONVECTION SINGLE OVEN

| | |
|--------------|--|
| PROF30FSEXT | 30" Professional Series - Single Self-Clean Oven - Top Version (T) |
| MAST30FSEXT | 30" Master Series - Single Self-Clean Oven - Top Version (T) |
| PROF30FSE XV | 30" Professional Series - Single Oven - Value Version (V) |
| MAST30FSE XV | 30" Master Series - Single Oven - Value Version (V) |

30" ELECTRIC CONVECTION DOUBLE OVEN

| | |
|--------------|--|
| PROF30FDEXT | 30" Professional Series - Double Self-Clean Oven - Top Version (T) |
| MAST30FDEXT | 30" Master Series - Double Self-Clean Oven - Top Version (T) |
| PROF30FDE XV | 30" Professional Series - Double Oven - Value Version (V) |
| MAST30FDE XV | 30" Master Series - Oven - Value Version (V) |

- TFT Display + knobs with 10 cooking modes
+ Assistant (XT models)
LED touch control interface + knobs with 9 cooking modes (XV models)
- Flush front design and suitable for undercounter installation
- Fingerprint free stainless steel
- Dual diagonal convection system
- Net volume for each cavity : 4.1 cu.ft
- Dimensions: **W** 29-7/8" / **D** 22-5/8" / **H** 28-5/8" (single) **H** 53-1/4" (double)
- Bake: 5400W Broiler: 3400 W Convection: 3300W
- Touch digital programmer timer
- Electrical supply: 30 Amp - 5 000 W (single)
Electrical supply: 50 Amp - 11 000 W (double)
- Soft-Close on XT models
- Soft-Motion on XV models
- 1 wire shelf flat + 1 wire shelf shaped + 1 baking tray with roasting trivet (XV Model)
- 1 wire shelf flat + 1 wire shelf shaped +1 set of telescopic glides +1 baking tray with roasting trivet+ 1 food probe (XT Model)

COOKING MODES: 1 bake 2 broil 3 convection 4 convection bake 5 convection broiler 6 pizza

COOKING MODES: 1 defrost 2 dehydrate 3 fast preheat 4 keep warm 5 light 6 proof 7 sabbath mode 8 self clean
9 timer 10 assistant (XT model)



PROF30FSE XV



MAST30FSE XT



PROF30FDE XT



MAST30FDE XV

Specifications and features may vary. Please refer to the manufacturer's website for the latest updates.

PROFESSIONAL &
MASTER SERIES

BUILT-IN OVENS

24" CONVECTION OVEN

PROF24FSEXV

24" Professional Series - Electric Convection Single Oven



- Capacity 2.7 cu.ft
- Cooking Modes: Bake, Bottom heat bake, Broil, Convection, Convection bake, Convection broil, Pizza, Upper heat bake
- Special features: Defrost, Dehydrate, Fast preheat, Light, Proof, Timer
- 5 shelf levels
- Fingerprint free stainless steel
- Bake: 2050 W Broiler: 2400 W Convection: 1800 W
- Flush installation with cabinet doors
- 1 wire shelf flat + 1 wire shelf shaped + 1 baking tray with roasting trivet
- Metal finish knobs with LED display interface
- Soft-motion door hinges
- Triple glass inner oven door
- Dimensions: W 23-3/8" / D 21-13/16" / H 23-3/8"

24" CONVECTION SPEED OVEN (COMBI MICROWAVE)

PROF24SOEX

24" Professional Series - Electric Convection Speed Oven



- Combination of electric convection + grill with microwave
- LED touch control glass interface
- Fingerprint free stainless steel
- Flush front design
- Suitable for undercounter installation
- 5 power levels (200 W to 1000 W)
- Cooking Modes: Broil, Convection, Convection broil, Convection microwave, Microwave, Microwave broil, Pizza
- Soft Motion door hinge
- Special Features: Defrost by time, Defrost by weight, Light, Popcorn, Recipes, Timer
- European convection ring heating element
- 1.35 cu.ft stainless cavity
- Broiler: 1500W Convection: 1600 W
- Cooling fan + 1 roasting trivet
- Glass turntable
- W 23-7/16" / D min. 17-3/4 max. 20-7/16" H 17-15/16"
- Side Panels (2): W 2-31/32" / H 17-29/32"

30" CONVECTION SPEED OVEN

PROF30SOEX

30" Professional Series - Electric Convection Speed Oven

MAST30SOEX

30" Master Series - Electric Convection Speed Oven



MAST30SOEX

- Combination of electric convection + grill with microwave
- Touch LED display
- Fingerprint free stainless steel
- Flush front design
- 1.34 cu.ft stainless cavity
- Cooking Modes: Broil, Convection, Convection broil, Convection microwave, Microwave, Microwave broil, Pizza
- Special Features: Defrost by time, Defrost by weight, Light, Popcorn, Recipes, Timer
- Cooling fan + 1 roasting trivet
- 1 glass turntable tray
- 2 shelf positions
- Suitable for undercounter installation
- Dimensions: W 29-7/8" / D 21-1/4" / H 18-3/4"

30" CONVECTION STEAM OVEN

PROF30CSEX

30" Professional Series - Electric convection Steam oven

MAST30CSEX

30" Master Series - Electric convection Steam oven



PROF30CSEX

- Combination of electric convection + grill with steam (6 functions)
- Touch LED display + knobs
- Fingerprint free stainless steel
- Flush front design
- Suitable for undercounter installation
- 1.10 cu.ft stainless cavity
- 1 stainless tray and 1 perforated stainless tray
- 2 shelf positions
- Dimensions: W 29-3/4" / D 21-17/64" / H 18-3/4"

Specifications and features may vary. Please refer to the manufacturer's website for the latest updates.

PROFESSIONAL &
MASTER SERIES

SPECIALITY OVENS

24" BUILT-IN MICROWAVE OVEN

MO30STANE 24" Microwave oven

FR30PROX 30" Width installation - Stainless steel frame required



MO30STANE + FR30PROX

- Style to match with Professional and Master Series
- Capacity 2 cu.ft
- 10 power levels / Power 1100 watts
- Turntable diameter 16"
- White cavity finishing
- Sensor heat, defrost, cook function, timer
- Preset cooking modes
- Dimensions: W 24" / D 21-3/4" / H 12-1/2"
- Frame dimensions: W 29-7/8" / D 1" / H 18-1/4"

30" MICROWAVE HOOD (OTR)

KOTR30MXE 30" Microwave Hood + Convection (over-the-range)

KOTR30X 30" Microwave Hood (over-the-range)



- Style to match with Professional and Master Series
- Can be located above a 24"/30" cooking surface
- Integrated, multi stage range hood function
- Stainless steel front and black glass window
- 3 lights, one in the cavity - two on the base plate
- Turntable (diam. 13.6")
- 2 speeds, high level 300CFM - low level 190CFM
- 10 Power levels and controls (pre-set functions, cooking timer and sensor for reheating + defrosting).
- Convection power: 1450W (XT model only)
- Microwave Power : 900W (X) / 1000W (XT)
- Oven volume: 1.6 cu.ft
- Dimensions: W 29 13/16" / D 14 7/8" / H 16 1/8"

MICROWAVE DRAWER

MD24X 24" Microwave Drawer



- Net Oven Volume 1.2 cu. ft.
- 11 power levels up to 950W max
- Anti-fingerprint stainless treatment
- LED digital touch UI
- White cavity with ceramic base
- Undercounter or column installation
- Dimensions: W 23 7/8" / D 21 5/8" / H 15 7/8"

WARMING DRAWER

PROF30WDEX 30" Professional Series - Warming drawer

MAST30WDEX 30" Master Series - Warming drawer



PROF30WDEX



MAST30WDEX

- Capacity 2.3 cu.ft
- Flush front design
- Fingerprint free stainless steel
- Tempered glass bottom
- Soft closing operation
- Power rating 550W
- Temperature: 85° F - 170° F
- Dimensions: W 29-7/8" / D 22" / H 9-7/8"

Specifications and features may vary. Please refer to the manufacturer's website for the latest updates.

PROFESSIONAL &
MASTER SERIES

RANGETOPS & COOKTOPS

GAS RANGETOPS

| | |
|---------------|--|
| PROF486GRTBXT | Professional Series - 48" gas rangetop - 6 brass burners + griddle |
| MAST486GRTBXT | Master Series - 48" gas rangetop - 6 brass burners + griddle |
| PROF366RTBXT | Professional Series - 36" gas rangetop - 6 brass burners |
| MAST366RTBXT | Master Series - 36" gas rangetop - 6 brass burners |
| MAST366RTXE | Master Series - 36" gas rangetop - 6 aluminum burners |



PROF366RTBXT



MAST366RTXE

- 19,000 BTU power burner with dual ring flame delivering fastest time-to-boil in class
- Electric griddle: 1100 Watts (48" model only)
- Cast iron professional grade grates
- Propane conversion kit included
- Thermocouple gas shut-off safety
- Wok ring, simmer plate and 3/4" backguard included
- 48" dimensions: W 47-7/8" / H 7-5/8" - D 25-1/4"
- 36" dimensions: W 35-3/4" / H 7-5/8" (with grates) / D 25-1/4"



MAST486GRTBXT

GAS COOKTOPS - FRONT CONTROLS

| | |
|-------------|--|
| PROF244CTXV | Professional Series - 24" gas cooktop - 4 aluminum burners - low profile maintop |
| PROF305CTXV | Professional Series - 30" gas cooktop - 5 aluminum burners - low profile maintop |
| PROF365CTXV | Professional Series - 36" gas cooktop - 5 aluminum burners - low profile maintop |



PROF365CTXV

- Aluminum burners 750-13,000 BTU (24" & 30")
- Aluminum burners 750-18,000 BTU (36")
- Cast iron grates
- Propane conversion kit included
- Thermocouple gas shut-off safety
- Easy to clean one-piece surface
- Slim depth installation compatible
- 36" dimensions: W 35-13/16" / H 1-1/2" / D 21-11/16"
- 24" dimensions: W 23-1/4" / H 1-1/2" / D 19-5/8"



PROF244CTXV

Specifications and features may vary. Please refer to the manufacturer's website for the latest updates.

PROFESSIONAL &
MASTER SERIES

COOKTOPS

GAS COOKTOPS - SIDE CONTROLS

| | |
|-------------|--|
| PROF366QBXT | Professional Series - 36" Drop-in Gas Cooktop 6 Brass Burners |
| MAST366QBXT | Master Series - 36" Drop-in Gas Cooktop 6 Brass Burners |
| PROF365QBXT | Professional Series - 36" Drop-in Gas Cooktop 5 Brass Burners |
| MAST365QBXT | Master Series - 36" Drop-in Gas Cooktop 5 Brass Burners |
| PROF365QXE | Professional Series - 36" Drop-in Gas Cooktop 5 Aluminum Burners |
| MAST365QXE | Master Series - 36" Drop-in Gas Cooktop 5 Aluminum Burners |
| PROF304QXE | Professional Series - 30" Drop-in Gas Cooktop 4 Brass Burners |
| MAST304QBXT | Master Series - 30" Drop-in Gas Cooktop 4 Brass Burners |
| PROF304QXE | Professional Series - 30" Drop-in Gas Cooktop 4 Aluminum Burners |
| MAST304QXE | Master Series - 30" Drop-in Gas Cooktop 4 Aluminum Burners |



PROF366QBXT



MAST365QBXT



MAST365QXE



PROF304QXE



MAST304QXE

- 18000 BTU power burner with dual ring flame delivering fastest time-to-boil in class
- Cast iron professional grade grates
- Propane conversion kit included
- Thermocouple gas shut-off safety
- Wok ring, simmer plate
- Dimensions - 36" high profile: W 36-13/32" / H 1-3/8" / D 21-1/4"
- 36" low* profile: W 36-13/16" / H 2-11/16" / D 21-1/4"
- 30" low* profile: W 29-7/16" / H 2-5/8" / D 21-1/4"
*Low profile: the height is integrated in countertop

Specifications and features may vary. Please refer to the manufacturer's website for the latest updates.

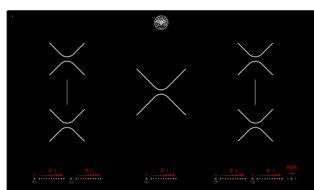
PROFESSIONAL &
MASTER

COOKTOPS

INDUCTION COOKTOP - TOUCH CONTROLS

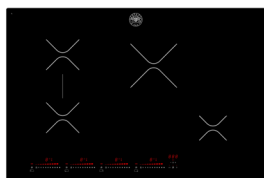
| | |
|---------|--|
| P365IAE | Professional/Master Series - 36" induction cooktop - 5 zones |
| P304IAE | Professional/Master Series - 30" induction cooktop - 4 zones |

- Bevelled ceramic glass
- 14 Power levels
- Timed cooking function for each heating zone
- Digitally controlled sensors and residual heat indicators
- Wear-resistant ceramic glass surface, easy to clean



P365IAE

- Induction zones of up to 5500W
- Max Amp usage: 11100 W - power rating: 48 A
- 2 bridge cooking zones
- 36" dimensions: W 34 5/8" / D 20 15/32" / H 2 7/16"



P304IAE

- Induction zones of up to 3700W
- Max Amp usage: 7400 W - power rating: 32 A
- 1 bridge cooking zone
- 30" dimensions: W 30 11/16" / D 20 15/32" / H 2 7/16"

ELECTRIC COOKTOP

| | |
|----------|---|
| PE304CER | Professional/Master Series - 30" electric cooktop - 4 zones |
| PE244CER | Professional/Master Series - 24" electric cooktop - 4 zones |



- Ceramic glass
- Front Touch Controls
- Residual heat indicator
- ADA Compliant

• **PE304CER**

- 4 zones with flexible heating areas of up to 2300W
- Dimensions: W 30" / H 3-1/8" / D 20-1/2"



• **PE244CER**

- 4 zones with flexible heating areas of up to 1800W
- Dimensions: W 24" / H 3-1/8" / D 20-1/2"

Specifications and features may vary. Please refer to the manufacturer's website for the latest updates.

ALL SERIES

FREESTANDING REFRIGERATION



Professional Series



Master Series



Heritage Series

36" FREESTANDING FRENCH DOOR

REF36X/17

36" Refrigerator - French Door with freezer drawers

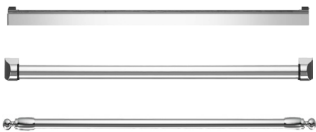
- Fingerprint free stainless steel
- LED lights on sides and top part of the cabinet
- Open door alarm
- Door Storage: 2 stationary + 4 height adjustable
- Shelves: 2 stationary / 4 height-adjustable
- Foldable glass shelf
- Interior LED touch-interface
- Temperature controlled crisper
- Drawers (refrigerator): 2 large
- Drawers (freezer): 2 + 1 tray for ice cubes
- Automatic Ice maker (2.6 lbs/24 hr capacity of ice)
- Dimensions: W 35-7/8" / H 70"
 - D 30-3/4" (with handles)
 - D 28-1/2" (without handles)

THE REFRIGERATOR MUST BE ORDERED WITH THE HANDLE KIT.



36" HANDLE KIT FOR REFRIGERATOR (KIT CONTAINS 4 HANDLES)

| | |
|------------|---|
| PROHK36FD | Handle kit for 36" French Door refrigerator - Professional Series |
| MASHK36FD | Handle kit for 36" French Door refrigerator - Master Series |
| HERHK36REF | Handle kit for 36" French Door refrigerator - Heritage Series |

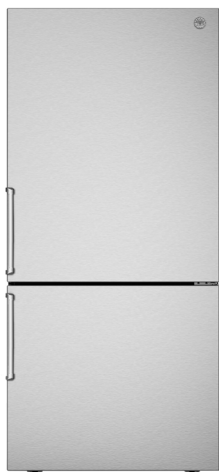


Specifications and features may vary. Please refer to the manufacturer's website for the latest updates.

PROFESSIONAL &
MASTER SERIES

FREESTANDING REFRIGERATION

FREESTANDING REFRIGERATOR



REF31BMFIX + MASHK24BM

REF31BMFIX 31" Refrigerator - Reversible hinge

- Surround Cooling System - Optimized airflow design with multiple vents on every shelf level for even temperature throughout entire refrigerator
- Total No-Frost system: automated defrosting of evaporator ensures food stays always fresh
- Fridge compartment: 3 shelves - 1 large crisper - Height adjustable
- Door Storage: 2 full-width bins - 4 half-width bins
- Freezer compartment: 2 full-width drawers - 1 half-width drawer
- Fast freeze - 2 air vents in top freezer drawer accelerate temperature drop, helping lock vitamins and maintain flavors.
- Automatic ice-maker
- Interior touch-control with LED screen (on top)
- LED lighting
- Flat front stainless steel doors with no-fingerprint surface treatment
- Dimensions W 31-1/4" / H 69-1/4" / 25-1/2" (without handle)



THE REFRIGERATOR MUST BE ORDERED WITH THE HANDLE KIT (_ _ _ HK24BM).

FREESTANDING REFRIGERATOR

REF24BMFX 24" Refrigerator - Reversible hinge

- Surround Cooling System - Optimized airflow design with multiple vents on every shelf level for even temperature throughout entire refrigerator
- Total No-Frost system: automated defrosting of evaporator ensures food stays always fresh
- Fridge compartment: 3 shelves - 1 Chrome wine rack - 1 large crisper drawer
- Door Storage: 3 full-width bins - Height adjustable
- Freezer compartment: 3 drawers
- Fast freeze - 2 air vents in top freezer drawer accelerate temperature drop, helping lock vitamins and maintain flavors.
- Interior touch-control with LED screen (on top)
- LED lighting
- Flat front stainless steel doors with no-fingerprint surface treatment
- Dimensions: W 23 3/8" / H 74 3/32" / D 25 3/32" (without handle)
- 11.5 total cu.ft. capacity

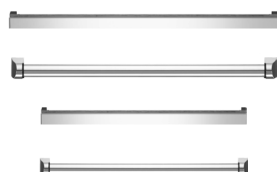


THE REFRIGERATOR MUST BE ORDERED WITH THE HANDLE KIT (_ _ _ HK24BM).

HANDLE KIT FOR REF31BMFIX AND REF24BMFX (KIT CONTAINS 2 HANDLES)

PROHK24BM Handle kit for 24" & 31" bottom mount refrigerator - Professional Series

MASHK24BM Handle kit for 24" & 31" bottom mount refrigerator - Master Series



Specifications and features may vary. Please refer to the manufacturer's website for the latest updates.

ALL SERIES



BUILT-IN REFRIGERATION

INTEGRATED BOTTOM MOUNT REFRIGERATOR

REF24PR 24" Refrigerator - Panel Ready - Field Reversible Door

- 8.8 cu.ft. (6.4 cu.ft. REF & 2.4 cu.ft. FRE)
- Full width crisper
- Extra bottom storage space
- 3 level freezer drawers
- LED lighting
- ADA compliant
- Energy Star rated

BUILT-IN BOTTOM MOUNT REFRIGERATOR

REF36PIXR 36" Refrigerator - Stainless Panel installed - Right hinge

REF36PIXL 36" Refrigerator - Stainless Panel installed - Left hinge

REF30PIXR 30" Refrigerator - Stainless Panel installed - Right hinge

REF30PIXL 30" Refrigerator - Stainless Panel installed - Left hinge

A HANDLE KIT MUST BE ORDERED FOR THE STAINLESS PANEL READY REFRIGERATORS:

REF36PRR 36" Refrigerator - Panel ready - Right hinge

REF36PRL 36" Refrigerator - Panel ready - Left hinge

REF30PRR 30" Refrigerator - Panel ready - Right hinge

REF30PRL 30" Refrigerator - Panel ready - Left hinge

- Extra-bright LED lights interior illumination on top and sides
- Automatic settings: Max Cool Fridge, Vacation, Beverage Cooler, SuperIce, IceSize, Sabbath Mode, Water Filter
- Integrated water filter connected to water line ensures regular production of ice cubes of customizable size.
- White Aluminum Interior
- 2 full-width shelves, 2 antibacterial stainless-steel drawers
- Flex Mode: Switch bottom compartment between freezer and refrigerator with one touch.
- Door storage: 3 full-width racks
- Freezer: 1 large drawer, 1 inner drawer, ice tray
- Automatic ice maker with filter (up to 3 lbs / 24 hours)
- Total no frost
- Internal LED touch interface with intuitive controls
- 17.7 cu.ft. capacity (36") - 13.9 cu.ft. capacity (30")

DIMENSIONS

- 30" Panel Ready: W 29 1/2" / H 83 1/2" / D 24"
- 36" Panel Ready: W 35 3/8" / H 83 1/2" / D 24"
- 36" Stainless: W 35 3/8" / H 83 1/2" / D 25" (without handle)
- 30" Stainless: W 29 1/2" / H 83 1/2" / D 25" (without handle)

REF36PIXL + PROHK36PI



Specifications and features may vary. Please refer to the manufacturer's website for the latest updates.

ALL SERIES



PRO MASTER HERITAGE

BUILT-IN REFRIGERATION

BOTTOM MOUNT HANDLE KIT FOR REF_ _PIX_ (KIT CONTAINS 2 HANDLES)

| | |
|-----------|--|
| PROHK36PI | Handle kit for 36" Built-in refrigerator - Professional Series |
| MASHK36PI | Handle kit for 36" Built-in refrigerator - Master Series |
| HERHK36PI | Handle kit for 36" Built-in refrigerator - Heritage Series |
| PROHK30PI | Handle kit for 30" Built-in refrigerator - Professional Series |
| MASHK30PI | Handle kit for 30" Built-in refrigerator - Master Series |
| HERHK30PI | Handle kit for 30" Built-in refrigerator - Heritage Series |



REF36RCPRL

BUILT-IN REFRIGERATOR COLUMNS

| | |
|-------------|---|
| REF36RCPIXL | 36" Built-in Refrigerator column - Stainless - Left swing door |
| REF36RCPIXR | 36" Built-in Refrigerator column - Stainless - Right swing door |
| REF30RCPIXL | 30" Built-in Refrigerator column - Stainless - Left swing door |
| REF30RCPIXR | 30" Built-in Refrigerator column - Stainless - Right swing door |
| REF24RCPIXL | 24" Built-in Refrigerator column - Stainless - Left swing door |
| REF24RCPIXR | 24" Built-in Refrigerator column - Stainless - Right swing door |
| REF36RCPRL | 36" Built-in Refrigerator column - Panel Ready - Left swing door |
| REF36RCPRR | 36" Built-in Refrigerator column - Panel Ready - Right swing door |
| REF30RCPRL | 30" Built-in Refrigerator column - Panel Ready - Left swing door |
| REF30RCPRR | 30" Built-in Refrigerator column - Panel Ready - Right swing door |
| REF24RCPRL | 24" Built-in Refrigerator column - Panel Ready - Left swing door |
| REF24RCPRR | 24" Built-in Refrigerator column - Panel Ready - Right swing door |

- Internal LED touch interface with intuitive controls
- Extra-bright LED lights interior illumination on top and sides
- White Aluminum Interior
- 4 full-width shelves, 3 drawers and 3 full-width door shelves
- Lateral airflow cooling system
- Modes: Shopping, Vacation, Sabbath mode
- Door Alarm
- Capacity: 30"-16.84 cu.ft. / 24" -12.64 cu.ft / 18"-8.22 cu.ft

Stainless Dimensions
 36" - H 84" x W 36" x D 24 3/8"
 30" - H 84" x W 30" x D 24 3/8"
 24" - H 84" x W 24" x D 24 3/8"
 Panel Ready Dimensions
 36" - H 84" x W 36" x D 24 1/4"
 30" - H 84" x W 30" x D 24 1/4"
 24" - H 84" x W 24" x D 24 1/4"

Specifications and features may vary. Please refer to the manufacturer's website for the latest updates.

ALL SERIES

BUILT-IN REFRIGERATION



REF24RCPRR

BUILT-IN FREEZER COLUMNS

| | |
|--------------|--|
| REF30FCIPIXL | 30" Built-in Freezer column - Stainless - Left swing door |
| REF30FCIPIXR | 30" Built-in Freezer column - Stainless - Right swing door |
| REF24FCIPIXL | 24" Built-in Freezer column - Stainless - Left swing door |
| REF24FCIPIXR | 24" Built-in Freezer column - Stainless - Right swing door |
| REF18FCIPIXL | 18" Built-in Freezer column - Stainless - Left swing door |
| REF18FCIPIXR | 18" Built-in Freezer column - Stainless - Right swing door |
| REF30FCIPRL | 30" Built-in Freezer column - Panel Ready - Left swing door |
| REF30FCIPRR | 30" Built-in Freezer column - Panel Ready - Right swing door |
| REF24FCIPRL | 24" Built-in Freezer column - Panel Ready - Left swing door |
| REF24FCIPRR | 24" Built-in Freezer column - Panel Ready - Right swing door |
| REF18FCIPRL | 18" Built-in Freezer column - Panel Ready - Left swing door |
| REF18FCIPRR | 18" Built-in Freezer column - Panel Ready - Right swing door |

- Internal LED touch interface with intuitive controls
 - Extra-bright LED lights interior illumination on top and sides
 - White Aluminum Interior
 - 2 full-width shelves, 2 drawers and 2 full-width door shelves
 - Automatic Ice Maker (2.2 lbs/24 hrs)
 - Lateral airflow cooling system
 - Modes: Shopping, Vacation Bottle Cooler, Ice Maker, Water Filter, Super Ice, Sabbath mode.
 - Door Alarm
 - Ice Tray included
 - Capacity: 30"-16.84 cu.ft. / 24"-12.64 cu.ft. / 18"-8.22 cu.ft
- Stainless Dimensions**
30" - H 84" x W 30" x D 24 3/8"
24" - H 84" x W 24" x D 24 3/8"
18" - H 84" x W 18" x D 24 3/8"
- Panel Ready Dimensions**
30" - H 84" x W 30" x D 24 1/4"
24" - H 84" x W 24" x D 24 1/4"
18" - H 84" x W 18" x D 24 1/4"



REF18WCPRL

BUILT-IN WINE CELLAR COLUMNS

| | |
|-------------|--|
| REF24WCPIXL | 24" Built-in Wine Cellar column - Stainless - Left swing door |
| REF24WCPIXR | 24" Built-in Wine Cellar column - Stainless - Right swing door |
| REF18WCPIXL | 18" Built-in Wine Cellar column - Stainless - Left swing door |
| REF18WCPIXR | 18" Built-in Wine Cellar column - Stainless - Right swing door |
| REF24WCPRL | 24" Built-in Wine Cellar column - Panel Ready - Left swing door |
| REF24WCPRR | 24" Built-in Wine Cellar column - Panel Ready - Right swing door |
| REF18WCPRL | 18" Built-in Wine Cellar column - Panel Ready - Left swing door |
| REF18WCPRR | 18" Built-in Wine Cellar column - Panel Ready - Right swing door |

- Digital touch control interface inside
- LED lights interior illumination
- White aluminum interior
- 12 wooden wine racks
- Two temperature zones
- Modes: Humidity control, Sabbath mode.
- Door Alarm
- 52 bottle capacity (18")
- 80 bottle capacity (24")

- Stainless /Glass Door Dimensions**
24" - H 84" x W 24" x D 24 3/8"
18" - H 84" x W 18" x D 24 3/8"
- Panel Ready /Glass Door Dimensions**
24" - H 84" x W 24" x D 24 1/4"
18" - H 84" x W 18" x D 24 1/4"

A HANDLE KIT MUST BE ORDERED FOR THE STAINLESS PANEL READY COLUMNS:

ALL SERIES

BUILT-IN REFRIGERATION



PRO MASTER HERITAGE

COLUMN HANDLE KIT FOR REF_ _ RC / FC / WC

| | |
|----------|--|
| PROHKCOL | Handle kit for column refrigerator - Professional Series |
| MASHKCOL | Handle kit for column refrigerator - Master Series |
| HERHKCOL | Handle kit for column refrigerator - Heritage Series |



BUILT-IN SIDE BY SIDE CONNECTION TRIM INSTALL KIT

| | |
|--------|---|
| 901470 | Connection trim for side-by-side install of stainless steel built-in refrigerators, 30 inches and 36 inches |
| 901469 | For panel ready |



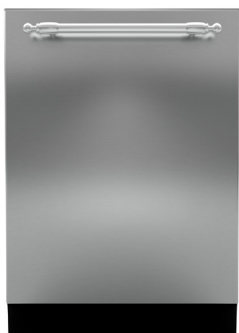
INSTALLATION TRIM KIT

| | |
|--------|--|
| 901533 | Flange trim kit for replacement installation for REF36PIXL/R |
|--------|--|

ALL SERIES

CLEAN UP

BUILT-IN DISHWASHER



DW24XV + HERHK24DW

| | |
|--------|--|
| DW24XT | 24" Dishwasher - Top version - 16 place settings |
| DW24XV | 24" Dishwasher - Value version - 14 place settings |

- Fingerprint free stainless steel
- 6 washing cycles: heavy, auto, normal, quick, eco, rinse.
- Washing options: power zone (XT only), extra dry, sani boost, high temp, delay start 24h.
- Sound insulation: 45 db (XT) 48db (XV)
- Place settings: 16 (XT) 14 (XV)
- LED touch controls (concealed)
- Energy star certification
- Food disposer
- Spray arms: 4 (XT, including power zone) 3 (XV)
- Racks: 3 (XT, including flexible top drawer) 2 (XV)
- Turbo drying system (XT only)
- 2 LED lights (XT only)
- Triple-stage filter in stainless steel and plastic
- Dimensions: W 23-3/4" / H 33-3/4"
- D 24-1/2" (without handle)

THE DISHWASHER MUST BE ORDERED WITH THE HANDLE



BUILT-IN DISHWASHER - PANEL READY

| | |
|--------|------------------------------------|
| DW24PR | 24" Dishwasher - 10 place settings |
| DW18PR | 18" Dishwasher - 8 place settings |



DW24PR

- Panel ready
- 6 washing cycles: heavy, auto, normal, quick, eco, rinse.
- 4 washing options: sanitize, hi temp, heating dry, energy save
- Sound insulation: 49 dB
- Electronic touch control and LED display (concealed)
- Energy star certification
- End of cycle floor projection indicator light
- Stainless steel interior finish
- 3 spray arms
- 24" dimensions: W 23-5/8" / H 32-1/2" / D* 21-5/8"
- 18" dimensions: W 17-11/16" / H 32-1/2" / D* 21-5/8"



DW18PR

* Without handles or custom cabinet panel

HANDLE MUST BE ORDERED SEPARATELY IF NEEDED



HANDLE FOR DISHWASHERS

| | |
|-------------|---|
| PROHK24DWPI | 24" Handle Kit for dishwasher - Professional Series |
| MASHK24DWPI | 24" Handle Kit for dishwasher - Master Series |
| HERHK24DW | 24" Handle Kit for dishwasher - Heritage Series |
| PROHK18DW | 18" Handle Kit for dishwasher - Professional Series |
| MASHK18DW | 18" Handle Kit for dishwasher - Master Series |
| PNL18DW | 18" Stainless Steel Panel for dishwasher |



Specifications and features may vary. Please refer to the manufacturer's website for the latest updates.

PROFESSIONAL &
MASTER SERIES

VENTILATION

UNDERMOUNT OR WALLMOUNT (DUCT COVER REQUIRED) HOOD

| | |
|--------------|--|
| KU48PRO2X/14 | 48" Canopy hood - 2 motors - 1200 CFM - Stainless baffle filters |
| KU36PRO2X/14 | 36" Canopy hood - 2 motors - 1200 CFM - Stainless baffle filters |
| KU48PRO1X/14 | 48" Canopy hood - 1 motor - 600 CFM - Aluminum mesh filters |
| KU36PRO1X/14 | 36" Canopy hood - 1 motor - 600 CFM - Aluminum mesh filters |
| KU30PRO1X/14 | 30" Canopy hood - 1 motor - 600 CFM - Aluminum mesh filters |
| KU24PRO1X/14 | 24" Canopy hood - 1 motor - 600 CFM - Aluminum mesh filters |



KU36PRO2X/14

- Stainless steel
- Electronic controls with buttons (3 speeds)
- LED lighting (2 motors: 4 lights / 1 motor: 2 lights)

| | |
|---------------------|---|
| KU48PRO2X/14 | W 47-13/16" / D 12" - 22-7/16" / H* 10-1/8" |
| KU36PRO2X/14 | W 35-7/8" / D 12" - 22-7/16" / H* 10-1/8" |
| KU48PRO1X/14 | W 47-13/16" / D 12" - 19-5/16" / H* 10-1/8" |
| KU36PRO1X/14 | W 35-7/8" / D 12" - 19-5/16" / H* 10-1/8" |
| KU30PRO1X/14 | W 29-15/16" / D 12" - 19-5/16" / H* 10-1/8" |
| KU24PRO1X/14 | W 23-15/16" / D 12" - 19-5/16" / H* 10-1/8" |

Optional duct covers & Accessories available see pages 28, 29, 32



KU30PRO1X/14

UNDERMOUNT OR WALLMOUNT (DUCT COVER REQUIRED) HOOD

| | |
|------------|--|
| KU36PRO1XV | 36" Hood - 1 motor - 400 CFM - Aluminum mesh filters - Value version |
| KU30PRO1XV | 30" Hood - 1 motor - 400 CFM - Aluminum mesh filters - Value version |
| KU24PRO1XV | 24" Hood - 1 motor - 400 CFM - Aluminum mesh filters - Value version |

- Stainless steel
- Slider controls (3 speeds)
- 2 LED lights
- Recirculation kit available



KU30PRO1XV

| | |
|-------------------|----------------------------------|
| KU36PRO1XV | W 36" / D 17-33/64" / H 8-17/64" |
| KU30PRO1XV | W 30" / D 17-33/64" / H 8-17/64" |
| KU24PRO1XV | W 24" / D 17-33/64" / H 8-17/64" |

Optional duct covers & Accessories available see pages 28, 29, 32

Specifications and features may vary. Please refer to the manufacturer's website for the latest updates.

ALL SERIES

VENTILATION



CONTEMPORARY WALLMOUNT HOOD

| | | |
|---------|---|---|
| KMC48X | ● | 48" Canopy Hood - Stainless - Stainless baffle filters |
| KMC48NE | ● | 48" Canopy Hood - Matt Black - Stainless baffle filters |
| KMC48BI | ○ | 48" Canopy Hood - Matt White - Stainless baffle filters |
| KMC36X | ● | 36" Canopy Hood - Stainless - Stainless baffle filters |
| KMC36NE | ● | 36" Canopy Hood - Matt Black - Stainless baffle filters |
| KMC36BI | ○ | 36" Canopy Hood - Matt White - Stainless baffle filters |
| KMC30X | ● | 30" Canopy Hood - Stainless - Stainless baffle filters |
| KMC30NE | ● | 30" Canopy Hood - Matt Black - Stainless baffle filters |
| KMC30BI | ○ | 30" Canopy Hood - Matt White - Stainless baffle filters |

- 600 CFM (1 motor)
- Colour matched duct cover included (installs up to 10' ceilings)
- Electric button control with booster function
- LED light bar for illumination of worktop
- 59 dBA
- Recirculation & reducer kit available see accessory guide for details.
- 48" dimension: W 48" / D 18-1/16" / H 12-5/8"
- 36" dimension: W 36" / D 18-1/16" / H 12-5/8"
- 30" dimension: W 30" / D 18-1/16" D / H 12-5/8"
- Total Height with duct cover 34-3/8" to 52 9/16"



WALLMOUNT CHIMNEY HOOD

| | |
|---------|---------------------------------------|
| KCH24XV | 24" Chimney hood - 1 motors - 600 CFM |
| KCH30XV | 30" Chimney hood - 1 motors - 600 CFM |
| KCH36XV | 36" Chimney hood - 1 motors - 600 CFM |

- Stainless steel
- 600 CFM (1 motor)
- Push buttons (3 speeds)
- 2 LED lights
- Duct cover included
- 38 dBA
- 24" dimensions: W 24" / 17-11/64" / H 10-25/64"
- 30" dimensions: W 30" / 17-11/64" / H 10-25/64"
- 36" dimensions: W 36" / D 17-11/64" / H 10-25/64"
- Total Height with duct cover: 27-3/4" to 46-11/16"



T-SHAPE WALLMOUNT HOOD

| | |
|------------|--|
| K48CONX/14 | 48" Wallmount hood - 1 motor - 600 CFM - Aluminum mesh filters |
| K36CONX/14 | 36" Wallmount hood - 1 motor - 600 CFM - Aluminum mesh filters |

- Stainless steel
- 600 CFM (1 motor)
- Electronic controls (3 speeds)
- 2 halogen lights
- Duct cover included
- 48" dimensions: W 48" / D 19-11/16" / H 4-11/16"
- 36" dimensions: W 36" / D 19-11/16" / H 4-11/16"
- Total Height with duct cover: 21-11/16" to 35-13/16"

Specifications and features may vary. Please refer to the manufacturer's website for the latest updates.

ALL SERIES

VENTILATION

T-SHAPE BLACK GLASS WALLMOUNT HOOD

| | |
|-------|---|
| KG48X | 48" Wallmount hood - 1 motor - 600 CFM - Stainless steel mesh filters |
| KG36X | 36" Wallmount hood - 1 motor - 600 CFM - Stainless steel mesh filters |
| KG30X | 30" Wallmount hood - 1 motor - 600 CFM - Stainless steel mesh filters |



KG30X

- Stainless steel + black glass frontage
- 3 speed touch controls + booster
- 2 LED lights
- 42 dBA
- Duct cover included
- Hardwired
- 48" dimensions: W 47-11/16" / D 18-29/32" / H 3-5/32"
- 36" dimensions: W 35-7/8" / D 18-29/32" / H 3-5/32"
- 30" dimensions: W 30-7/8" / D 18-29/32" / H 3-5/32"
- Total Height with duct cover: 26-31/32" to 44-7/8"

Optional duct covers & accessories available see pages 28, 29, 32

HERITAGE WALLMOUNT HOOD

| | |
|----------|--|
| K48HERTX | 48" Wallmount hood - 1 motor - 600 CFM |
| K36HERTX | 36" Wallmount hood - 1 motor - 600 CFM |



K36HERTX/KC36HERTNE

- Base unit is Stainless Steel
- Electronic controls (3 speeds)
- 2 LED lights
- Baffle Stainless Steel Filters
- Duct cover included (installs up to 10' ceilings)
- Must be sold with canopy
- 59 dBA
- Chrome utensils bar included with the canopy
- 48" dimensions: W 48" / D 19-11/16"
- 36" dimensions: W 36" / D 19-11/16"
- Total Height (with canopy) 38" 5/16 - 54" 1/16
- Optional charcoal filter kit is see page 32

CANOPY TO COMPLETE ASSEMBLY

| | |
|------------|-----------------------------|
| KC48HERTX | ● 48" Canopy Hood Stainless |
| KC48HERTNE | ● 48" Canopy Hood Black |
| KC48HERTAV | ○ 48" Canopy Hood Ivory |
| KC36HERTX | ● 36" Canopy Hood Stainless |
| KC36HERTNE | ● 36" Canopy Hood Black |
| KC36HERTAV | ○ 36" Canopy Hood Ivory |

Specifications and features may vary. Please refer to the manufacturer's website for the latest updates.

ALL SERIES

VENTILATION



KIN36PROX



KIN30PROX

INSERT HOOD

| | |
|-----------|--|
| KIN46PROX | 46" Insert hood - 2 motors - 1200 CFM - Stainless baffle filters |
| KIN36PROX | 36" Insert hood - 2 motors - 1200 CFM - Stainless baffle filters |
| KIN30PROX | 30" Insert hood - 1 motor - 600 CFM - Stainless baffle filters |

- Stainless steel
- Recirculation kit available

KIN46PROX and KIN36PROX

- 3 speed slider controls x 2
- 4 LED lights
- 46" dimensions: W 45-7/16" / D 18-1/2" / H 12-1/4"
- 36" dimensions: W 34-1/4" / D 18-1/2" / H 12-1/4"
- Air Bracket included on board

KIN30PROX

- 3 speed electronic controls + remote control
- 2 LED lights
- Dimensions: W 28-3/8" / D 15-3/4" / H 11-1/8"



KIN46PROX

VISOR HOOD

| | |
|---------|--|
| KTV30XV | 30" Visor downdraft hood - 1 motor - 600 CFM - Aluminum mesh filters |
| KDV24XV | 24" Visor downdraft hood - 1 motor - 300 CFM - Aluminum mesh filters |

- Stainless steel
- Slider Controls (3 speeds)
- 2 LED lights
- Power cord connection
- Recirculation available see accessory guide for details.
- Max telescopic extension is 8"3/4
- 30" dimensions: W 30" / D 11" / H 1-5/8' (total H: 12-1/2")
- 24" dimensions: W 23-11/16" / D 11" / H 1-5/8' (total H: 12-1/2")



Specifications and features may vary. Please refer to the manufacturer's website for the latest updates.

ALL SERIES

ACCESSORIES



901262 Duct Cover Narrow - Tall - up to 12' ceiling

901281 Duct Cover Narrow - Short - 8-10' ceiling

901263 Duct Cover Medium - KU models

901266 30" Duct Cover Large - KU models

901265 36" Duct Cover Large - KU models

901261 48" Duct Cover Large

901363 Duct Extension for all CONX/14 models

901271 Recirculation Kit for KG48X-KG36X models

901335 Recirculation Kit for KU30PRO1XV model

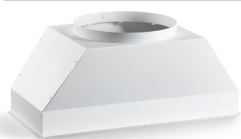
901336 Recirculation Kit for KU36PRO1XV model

901396 Recirculation Kit for KU24PRO1XV model

901453 Charcoal Filters for KTV30PRO1X-KTV24PRO1X models



901264 Air Bracket for KU48-36 PRO 2X models



Z130018 Flow through restrictor
- Reducting performance from 440 or 600 cfm hoods to 300 cfm
- To be installed in hoods that have only 1 motor.

901530 Flow through restrictor for KMC models - 400 CFM

901544 Flow through restrictor for KMC models - 300 CFM

ALL SERIES

ACCESSORIES



901364 Baffle Filters for CONX/14 and HERX/14 models
1 package contains 4 filters

901365 Baffle Filters for KU48-36-24 PRO1X/14 models
1 package contains 4 filters

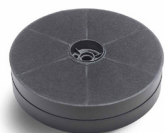
901366 Baffle Filters for KU30PRO1X/14 model
1 package contains 4 filters



901402 Aluminium Mesh Filters for KU48-36-24 PRO1X/14 & KU36-24 PRO1XV models
1 package contains 4 filters

901403 Aluminium Mesh Filters for KU30PRO1X/14 & KU30PRO1XV models
1 package contains 4 filters

901404 Aluminium Mesh Filters for CONX/14 and HERX/14
1 package contains 4 filters



901394 Charcoal Filter Kit for PRO1X/14 & PRO2X/14 2 required for 2X



901395 Charcoal Filter Kit for CONX/14, and HERTX & PRO2X/14



901430 Charcoal Filter Kit for PRO1XV models

901486 Charcoal Filter Kit for KG CONX models

901531 Charcoal Filter Kit for KMC models

901532 Durable Charcoal Filter Kit for KMC models
(can be washed and reused for up to 3 years)

901397 Charcoal Filters for KIN46-36-30 models

901488 Charcoal Filter Kit for KCH models

Specifications and features may vary. Please refer to the manufacturer's website for the latest updates.

ALL SERIES

ACCESSORIES

TOEKICK PANELS FOR RANGE



| | |
|--------|--|
| TKP48X | 48" Toekick panel for Professional and Master Series |
| TKP36X | 36" Toekick panel for Professional and Master Series |
| TKP30X | 30" Toekick panel for Professional and Master Series |
| TKP24X | 24" Toekick panel for Professional and Master Series |



| | |
|--------|---------------------------------------|
| TKHERX | Square legs covers 5" wide - set of 2 |
|--------|---------------------------------------|

BLACK KNOB KIT



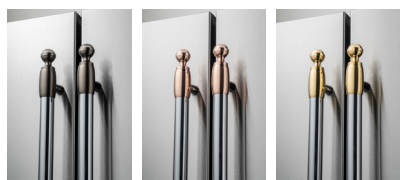
| | |
|----------|---|
| KKMASX | Master Series Black Knob Kit (rubber coated) for New Gas and Dual Fuel Ranges |
| KKMASINX | Master Series Black Knob Kit (rubber coated) for New Induction Ranges |

BACKGUARDS

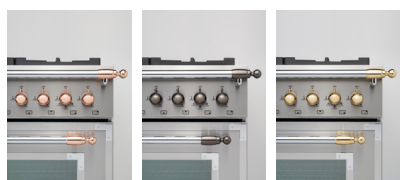


| | |
|-------|---|
| BGH48 | 4" backguard for 48" Professional and Master Series |
| BGH36 | 4" backguard for 36" Professional and Master Series |
| BGH30 | 4" backguard for 30" Professional and Master Series |
| BGH24 | 4" backguard for 24" Professional and Master Series |

HERITAGE SERIES DÉCOR SETS



| | |
|-----------|--|
| DS1HERTGO | Range & Hood kit - Gold finish |
| DS1HERTPC | Range & Hood kit - Polished Copper finish |
| DS1HERTSB | Range & Hood kit - Matt Satin Black finish |



| | |
|-----------|---|
| DS2HERTGO | Refrigerator & Dishwasher kit - Gold finish |
| DS2HERTPC | Refrigerator & Dishwasher kit - Polished Copper finish |
| DS2HERTSB | Refrigerator & Dishwasher kit - Matt Satin Black finish |

Specifications and features may vary. Please refer to the manufacturer's website for the latest updates.

ALL SERIES

ACCESSORIES

COOKING



901490 Telescopic glide set for PROF Series 24" wall ovens



901511 Telescopic glide set for PROF/MAST 24" ranges and 30" wall ovens

901471 Telescopic glide set for PROF/MAST/HERT Series ranges 30-36-48"



901272 Porcelain Tray



901273 Glass Tray



CIG36 Cast Iron Griddle for PROF/MAST/HERT Series ranges



901438 Simmer Ring



901439 Wok Ring

Specifications and features may vary. Please refer to the manufacturer's website for the latest updates.

ALL SERIES

ACCESSORY GUIDE
2020 VENTILATION ACCESSORIES GUIDE

| Range hood Category | Series | Size | Model # | Duct cover | Duct cover extension | Recirculation Kit | Charcoal Filter Kit | Air bracket for 2 in 1 ducting | Baffle Filters | Flow through Restrictor |
|-----------------------------|-----------------------|------|--------------|----------------------|---|-------------------|-----------------------------------|--------------------------------|----------------|--------------------------------------|
| Cabinet Mount Visor Hood | Professional Master | 24" | KTV24XV | | | | 901531 901532 (durable filter) | | | |
| | | 30" | KTV30XV | | | | 901531 901532 (durable filter) | | | Z130018 |
| Wall Mount | Professional & Master | 24" | KCH24XV | Included | | | 901488 | | | Z130018 |
| | | 30" | KMC30x | Included | | | 901531 901532 (durable filter) | | | 901544 (300 CFM) 901530 (400 CFM) |
| | | | KCH30XV | Included | | | 901488 | | | Z130018 |
| | | | KG30X | Included | 901562 | 901271 | 901486 | | Included | |
| | | 36" | KMC36x | Included | | | 901531 901532 (durable filter) | | | 901544 (300 CFM) 901530 (400 CFM) |
| | | | KCH36XV | Included | | | 901488 | | | Z130018 |
| | | | KG36X | Included | 901562 | 901271 | 901486 | | Included | |
| | | | K36CONX14 | Included | 901363 | - | 901395 | | 901364 | Z130018 |
| | | 48" | KMC48x | Included | | | 901531 901532 (durable filter) | | | 901544 (300 CFM) 901530 (400 CFM) |
| | | | KG48X | Included | 901562 | 901271 | 901486 | | Included | |
| | | | K48CONX14 | Included | 901363 | 901426 | 901395 | | 901364 | |
| | Heritage | 36" | K36HERTX | Included with Canopy | | | 901395 | | Included | Z130018 |
| | | 48" | K48HERTX | Included with Canopy | | | 901395 | | Included | Z130018 |
| Undermount Wall Mount | Professional | 24" | KU24PRO1XV | Not Included | 901281(standard) 901262 (narrow up to 10') | 901396 | 901430 | | 901365 | Z130018 |
| | | | KU24PRO1X/14 | Not Included | 901281(standard) 901262 (narrow up to 10') | | | | 901365 | Z130018 |
| | | 30" | KU30PRO1XV | Not Included | 901281(standard) 901262 (narrow up to 10') 901263 (medium) 901266 (full width) | 901335 | 901430 | | 901366 | Z130018 |
| | | | KU30PRO1X/14 | Not Included | 901281(standard) 901262 (narrow up to 10') 901263 (medium) 901266 (full width) | - | 901394 | | 901366 | Z130018 |
| | | 36" | KU36PRO1XV | Not Included | 901281(standard) 901262 (narrow up to 10') 901263 (medium) 901265 (full width) | 901336 | 901430 | | 901365 | Z130018 |
| | | | KU36PRO1X/14 | Not Included | 901281(standard) 901262 (narrow up to 10') 901263 (medium) 901265 (full width) | | 901394 | | 901365 | Z130018 |
| | | | KU36PRO2X/14 | Not Included | 901263 (medium) 901265 (full width) | | 901394* | 901264 | Included | |
| | | 48" | KU48PRO1X/14 | Not Included | 901281(standard) 901262 (narrow up to 10') 901263 (medium) 901261 (full width) | | 901394 | | 901365 | Z130018 |
| | | | KU48PRO2X14 | Not Included | 901263 (medium) 901261 (full width) | | 901394* | 901264 | Included | |
| Inserts | ALL | 30" | KIN30PROX | | | 901397 | | Included | Included | |
| | | 36" | KIN36PROX | | | 901397 | | Included | Included | |
| | | 46" | KIN46PROX | | | 901397 | | Included | Included | |

*2 charcoal filter kits required for 2 motor models

Specifications and features may vary. Please refer to the manufacturer's website for the latest updates.

ALL SERIES

COLORS

| COLOR FINISH | | SERIES |
|-----------------|---------------|-------------------|
| STAINLESS STEEL | | All Series |
| NERO | Glossy Black | Professional |
| BIANCO | Glossy White | Professional |
| ROSSO | Glossy Red | Professional |
| GIALLO | Glossy Yellow | Professional |
| ARANCIO | Glossy Orange | Professional |
| BIANCO OPACO | Matt White | Master |
| NERO OPACO | Matt Black | Master & Heritage |
| AVORIO | Matt Ivory | Heritage |



Nero



Bianco



Stainless



Rosso



Giallo



Arancio



Stainless Steel



Avorio



Nero



Stainless Steel

Specifications and features may vary. Please refer to the manufacturer's website for the latest updates.

PRODUCT GUIDE 2021



T 800 361 0799 F 450 682 7943

www.distinctive-online.com info@distinctive-online.com

EASTERN CANADA

Head Office & Warehouse
2025 Cunard Street
Laval, QC H7S 2N1

WESTERN CANADA

Showroom & Warehouse
Unit 120 - 11120 Horseshoe Way
Richmond, BC V7A 5H7

PARTS & SERVICE

service@distinctive-online.com

ORDER DESK

orderdesk@distinctive-online.com